

Pythoness House

PtOLUS

ADVENTURE MAPS

PtOLUS Adventure Maps: Pythoness House contains 36 miniatures-scale map tiles depicting the fifty encounter areas covered in chapter 1 of *The Night of Dissolution*, a *PtOLUS* adventure from Malhavoc Press.

Pythoness House is a square keep with a tall western tower, an exterior walkway connecting keep and tower, and an impressive gatehouse with twin guard towers. Although not really all that big, the complicated architecture provides many little nooks and crannies to explore. These map tiles will take your players from the haunted upper towers to the hidden secrets deep within this former chaos cult front.



PTOLUS

ADVENTURE MAPS

Pythoness House

Cartography and design

ED BOURELLE

Ptolus logo and cover pattern illustration

TODD LOCKWOOD

Ptolus created by

MONTE COOK

Editorial assistance

SUE WEINLEIN COOK



For more material on the City by the Spire visit

WWW.PTOLUS.COM

Look for FREE miniatures scale map tiles at

WWW.SKELETONKEYGAMES.COM

Print:

- Ptolus Adventure Maps are designed to be printed on your home printer.
- Print all the tiles or only the tiles you need - it is completely up to you.
- Each tile is offered on its own page so you can be selective and print only what you need.
- When printing, make sure that the *Print to Fit Page* option is clicked OFF so that the tiles will retain their one inch grid.

Trim:

- Trim out your Ptolus Adventure Maps with a sharp blade and a strait edge on a safe cutting surface.
- Where indicated, cut the tiles to the dashed line.

Connect:

- Use tape on the back of your Ptolus Adventure Maps to hold them together.
- Spray adhesive can be used to mount your tiles to a poster board.
- Mount the tiles to magnetic sheeting and trim for use on metal surfaces.

Play:

- Use miniatures or cardboard counters on your Ptolus Adventure Maps for infinite excitement.
 - Use markers to make notes and combat diagrams, you can always print more.
-

Ptolus Adventure Maps: Pythoness House ©2006 Edward Bourelle. All illustration and cartography is ©2006 Monte J. Cook and is used under license. **Ptolus** is a trademark owned by Monte J. Cook and is used here under license from Malhavoc Press. All rights reserved. **SkeletonKey Games** is a trademark owned by Edward Bourelle. All rights reserved. The reproduction or retransmission of any part of this product, without written permission of the copyright holder is expressly forbidden, except for the purpose of reviews. Permission is granted to print this material for personal use only.

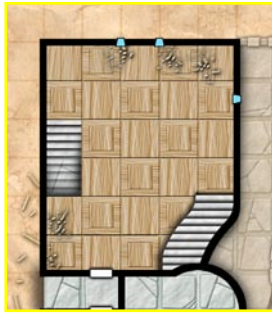
Product Code: SKGPAM05

Pythoiness House

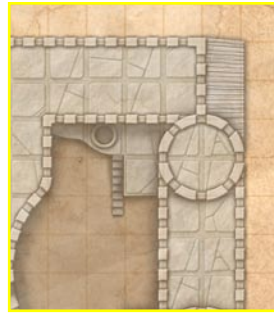
Ptolus: The Night of Dissolution page 7 (Chapter 1) / City Map grid C4 (Oldtown)



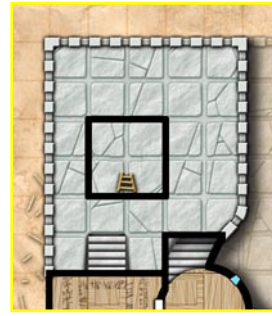
PH501



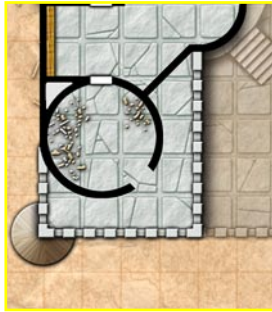
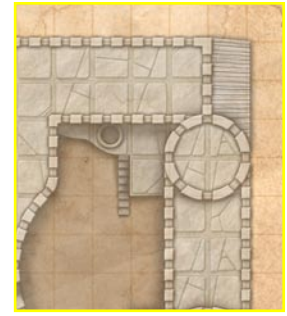
PH502



PH601



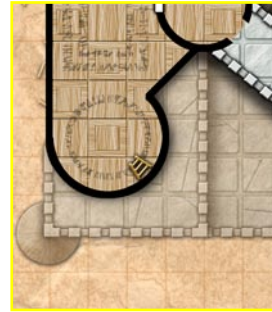
PH602



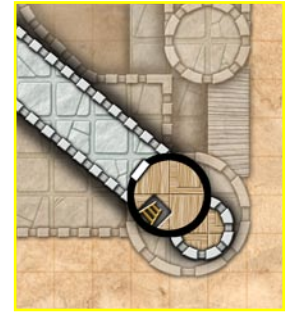
PH503



PH504



PH603

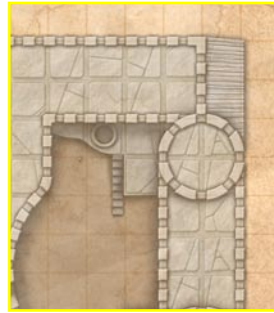


PH604

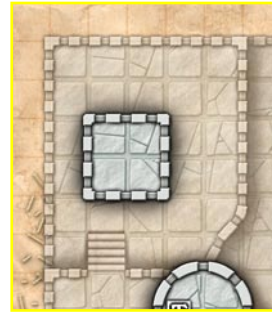
PH701



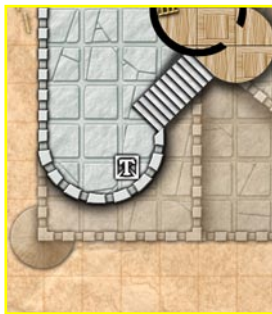
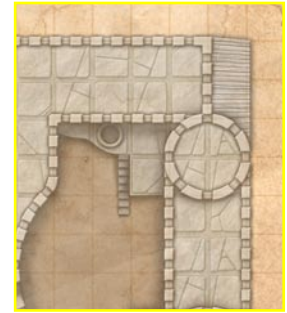
PH702



PH801



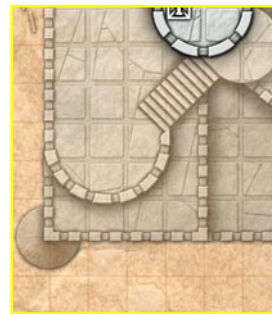
PH802



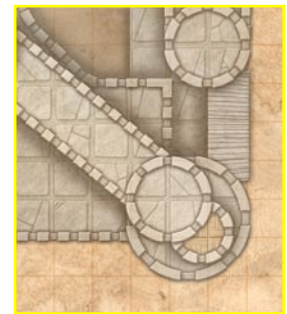
PH703



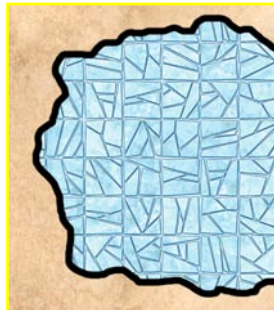
PH704



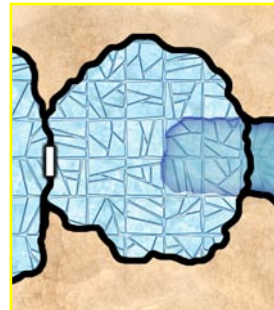
PH803



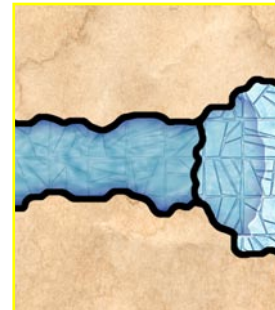
PH804



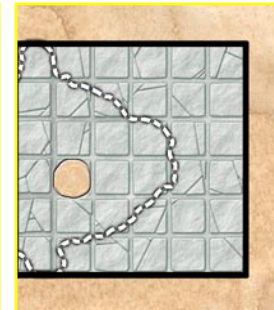
PHU03



PHU04



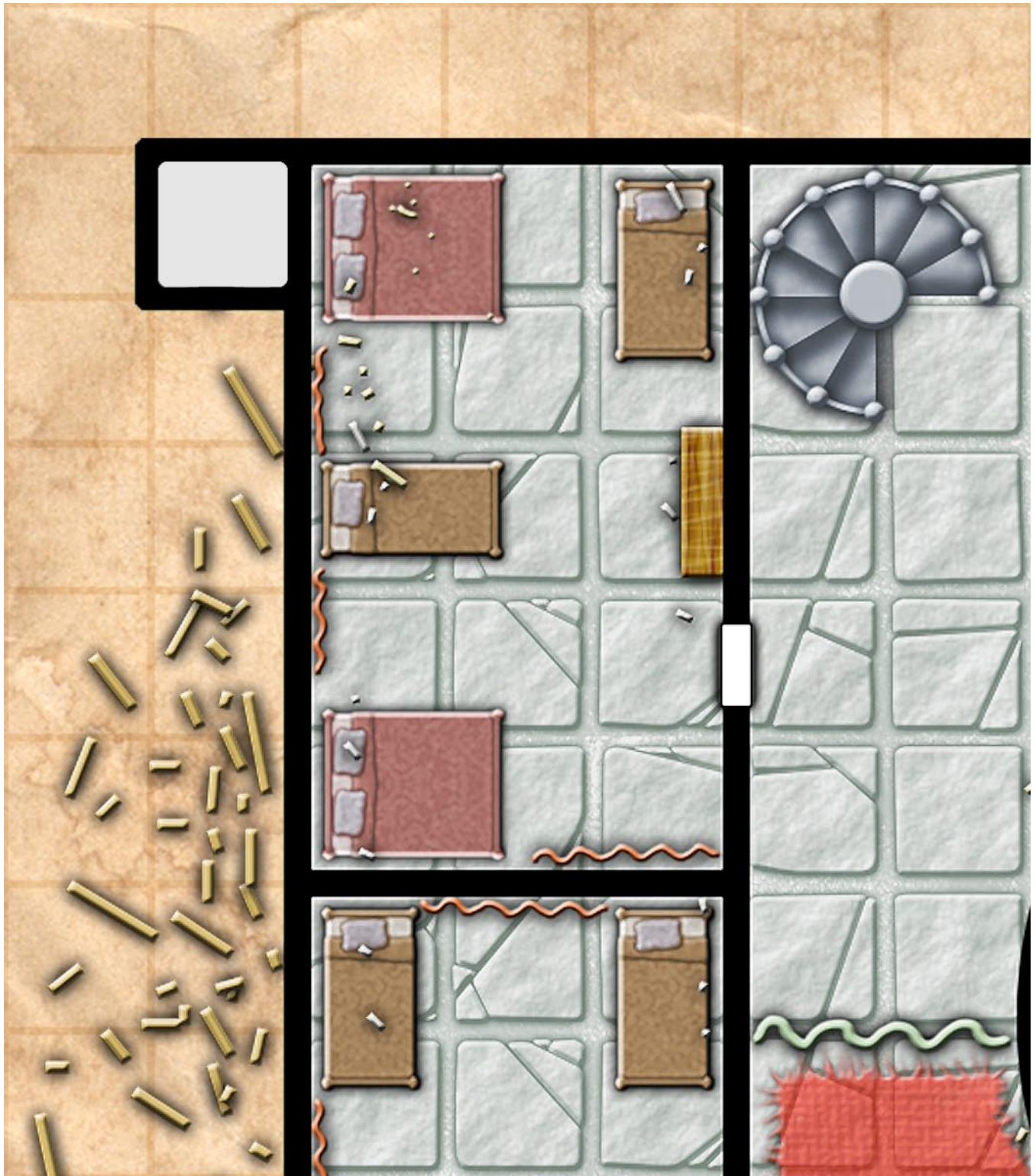
PHU03



PHU04

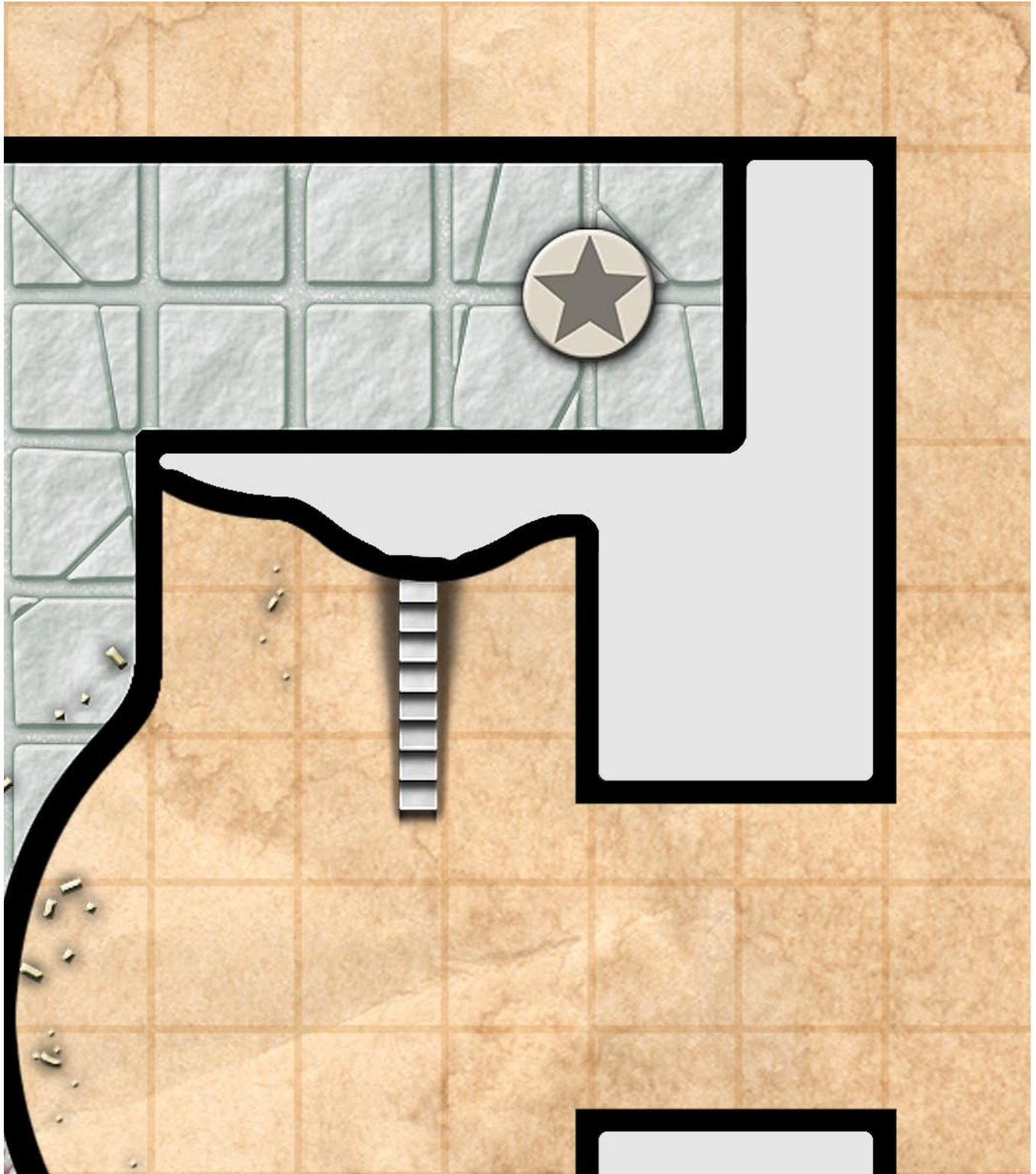
Ptolus Adventure Maps: Pythoness House

PH101



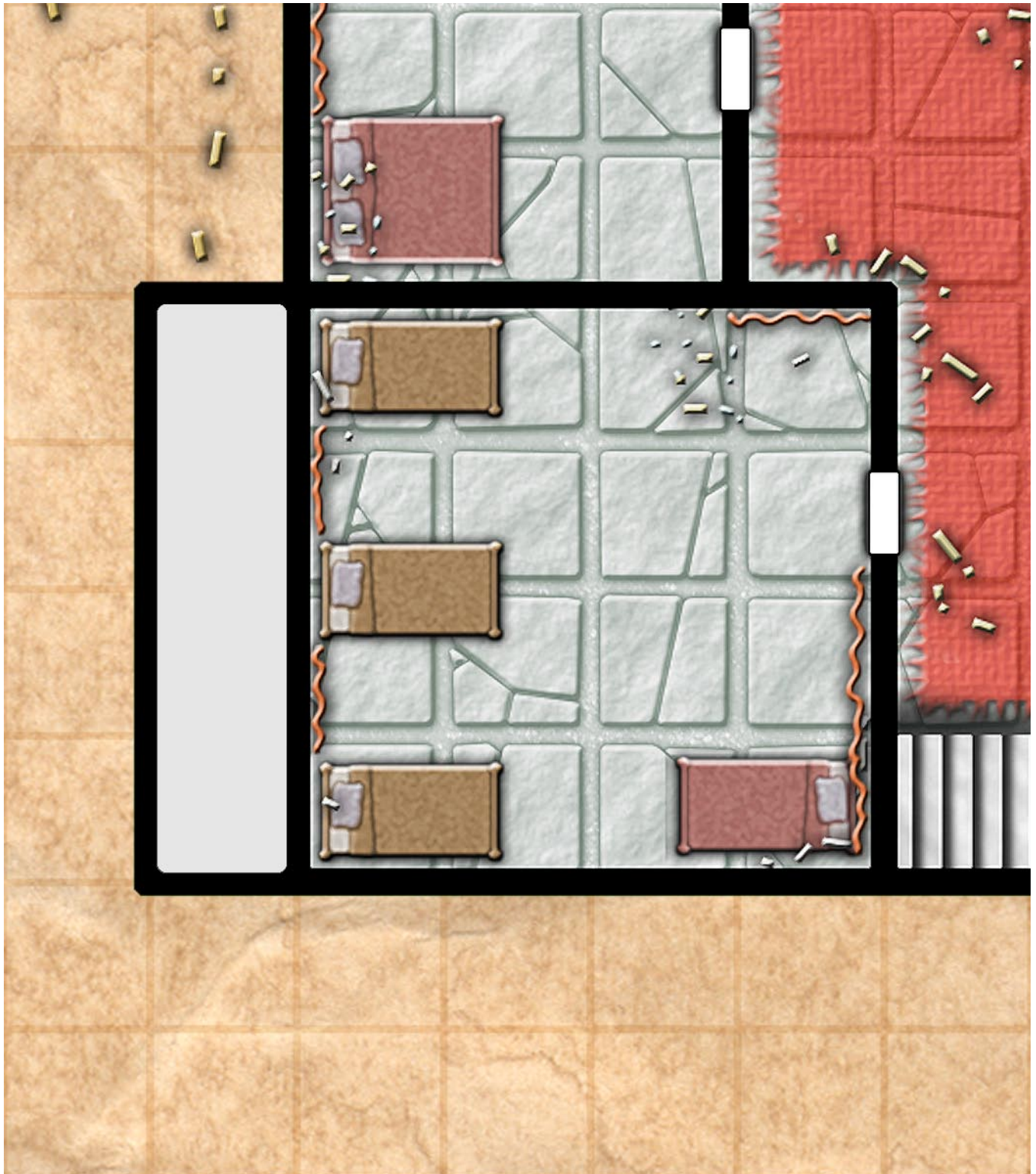
Ptolus Adventure Maps: Pythoness House

PH102



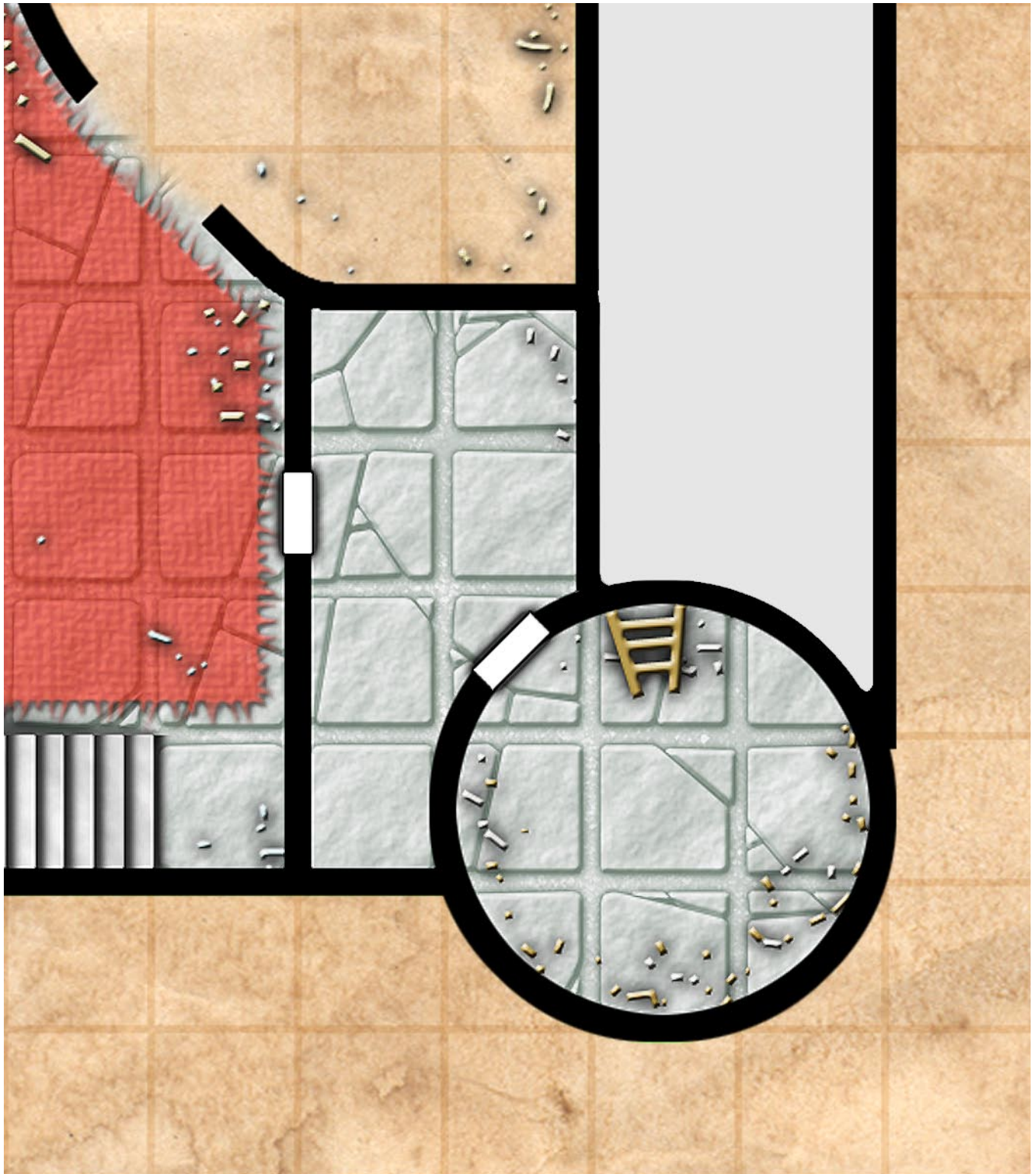
Ptolus Adventure Maps: Pythoness House

PH103



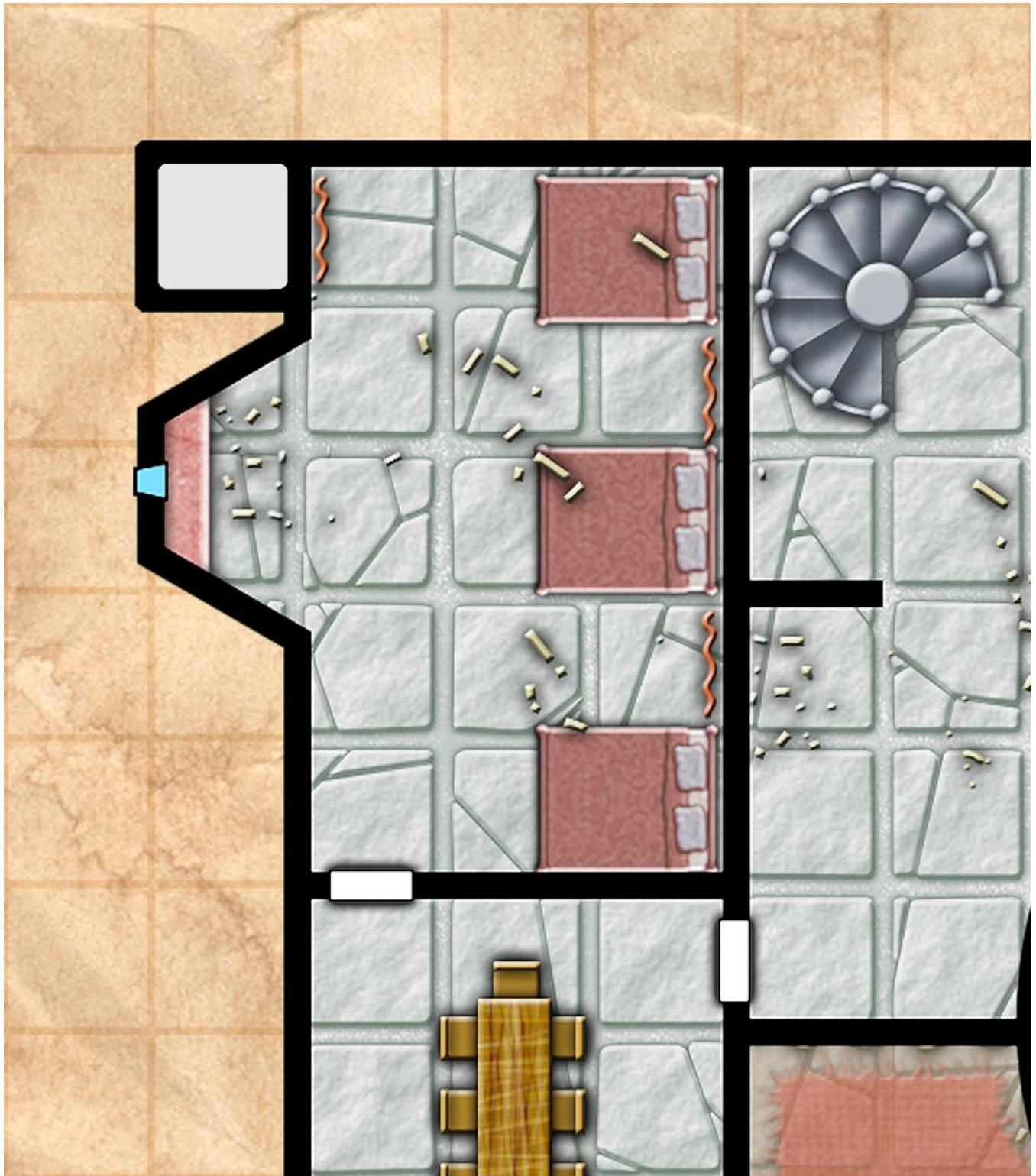
Ptolus Adventure Maps: Pythoness House

PH104



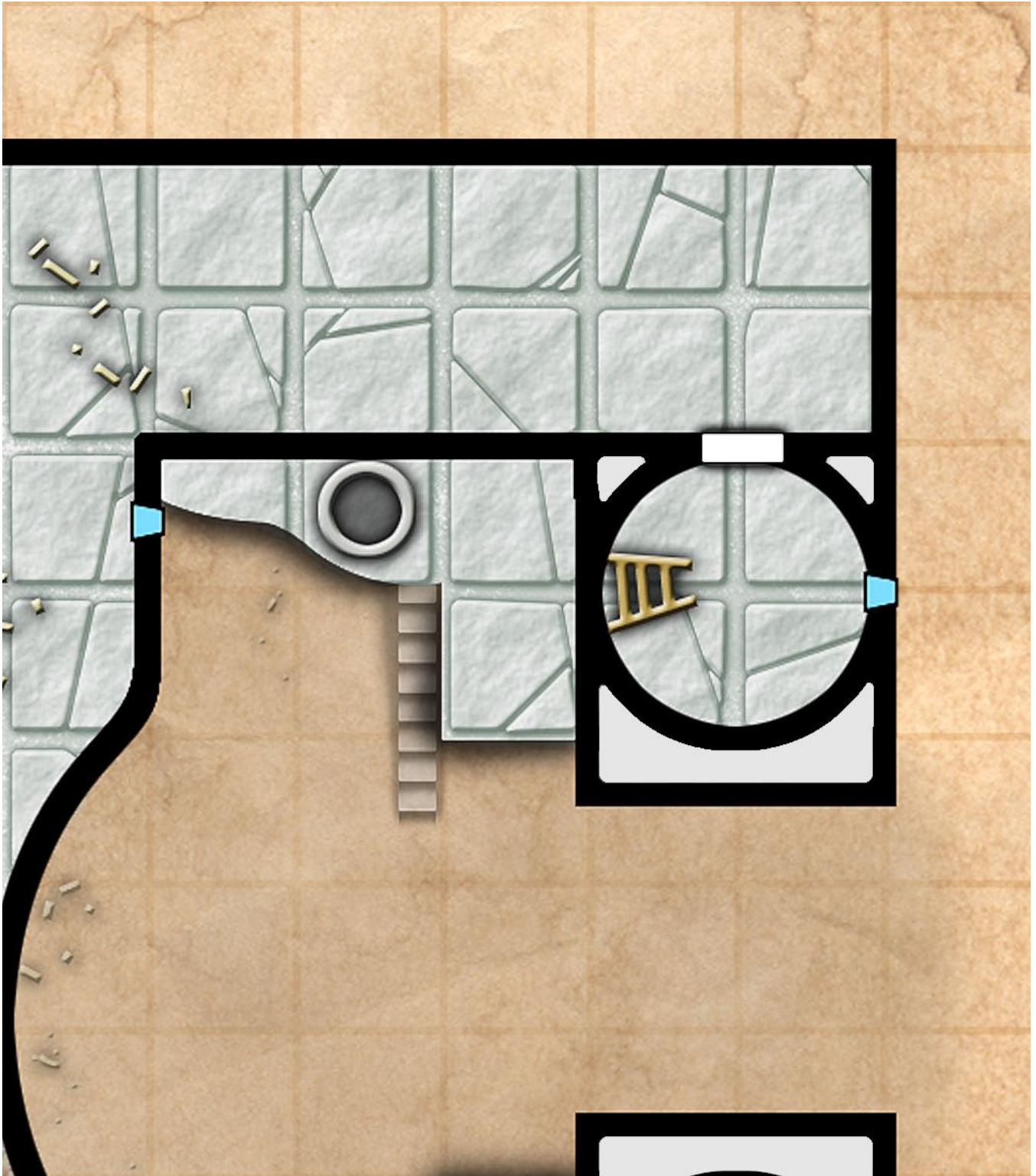
Ptolus Adventure Maps: Pythoness House

PH201



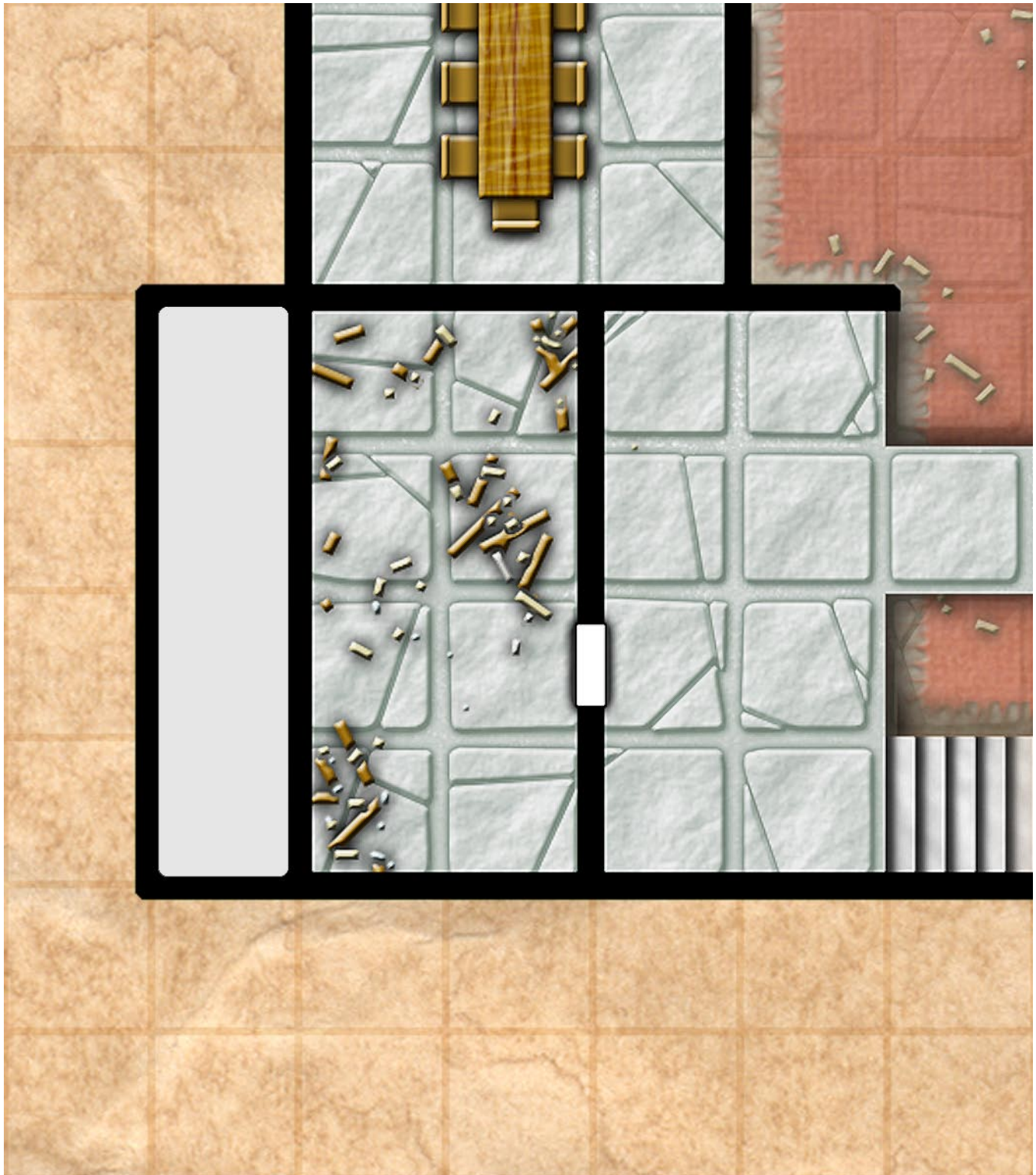
Ptolus Adventure Maps: Pythoness House

PH202



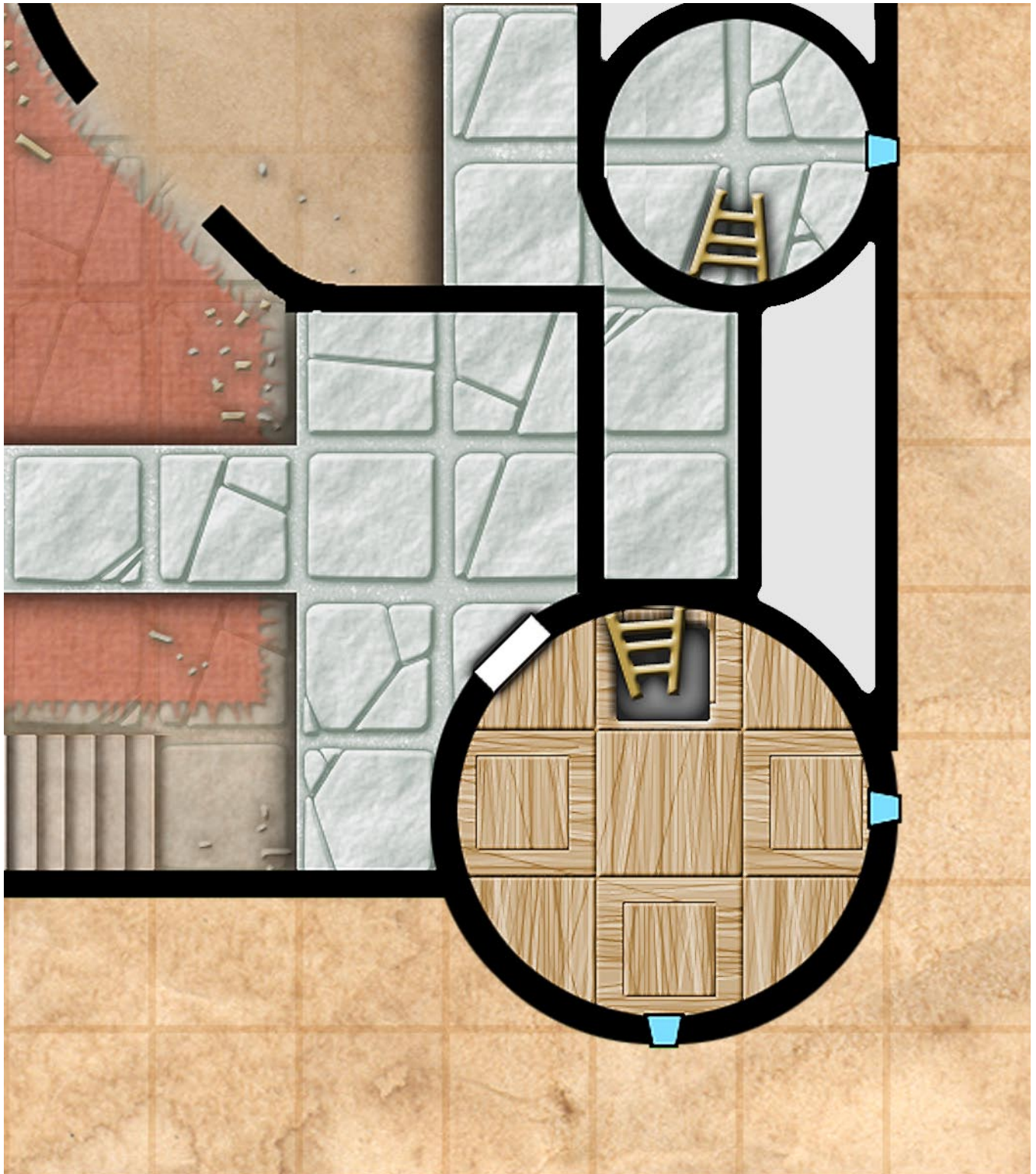
Ptolus Adventure Maps: Pythoness House

PH203



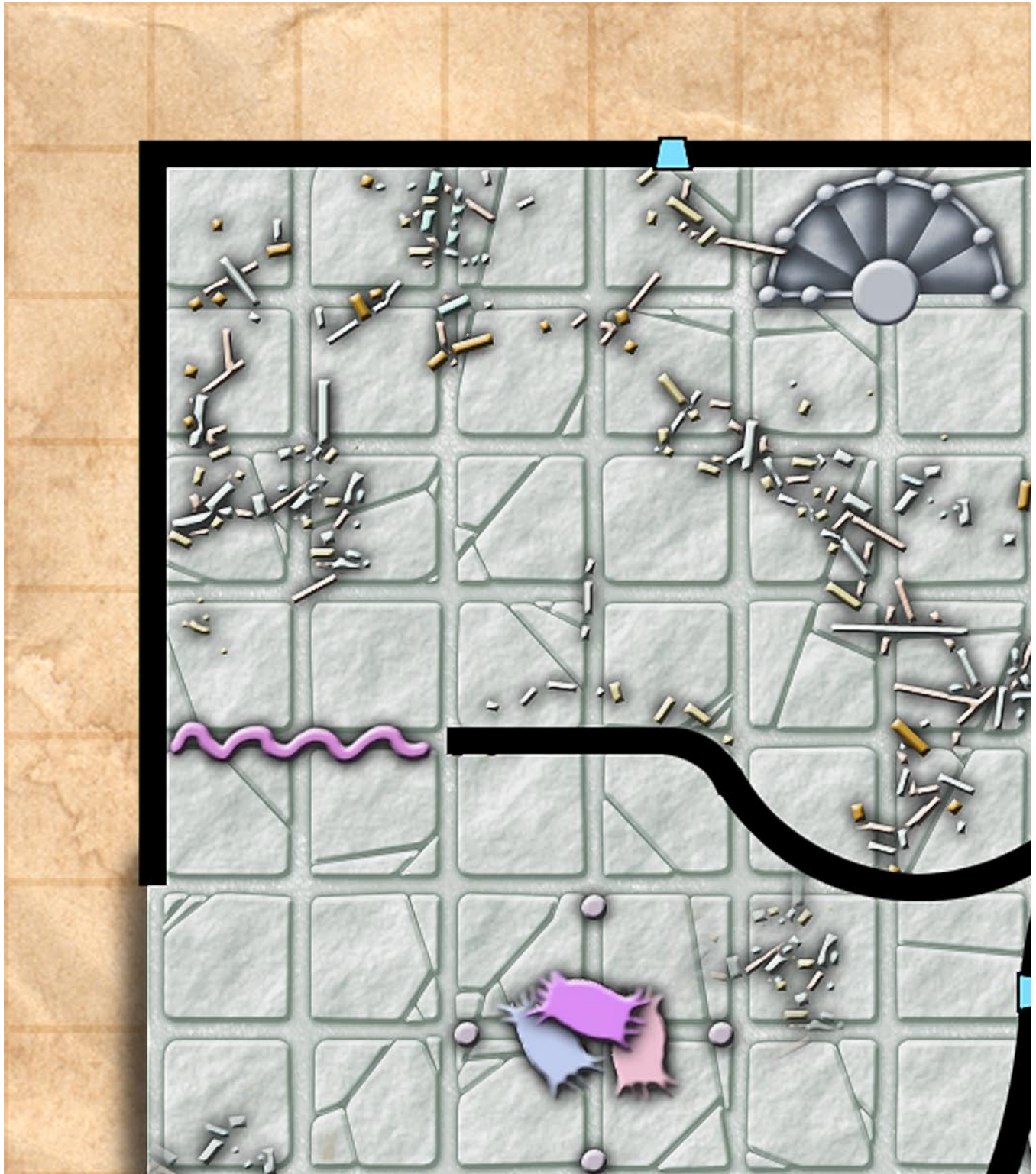
Ptolus Adventure Maps: Pythoness House

PH204



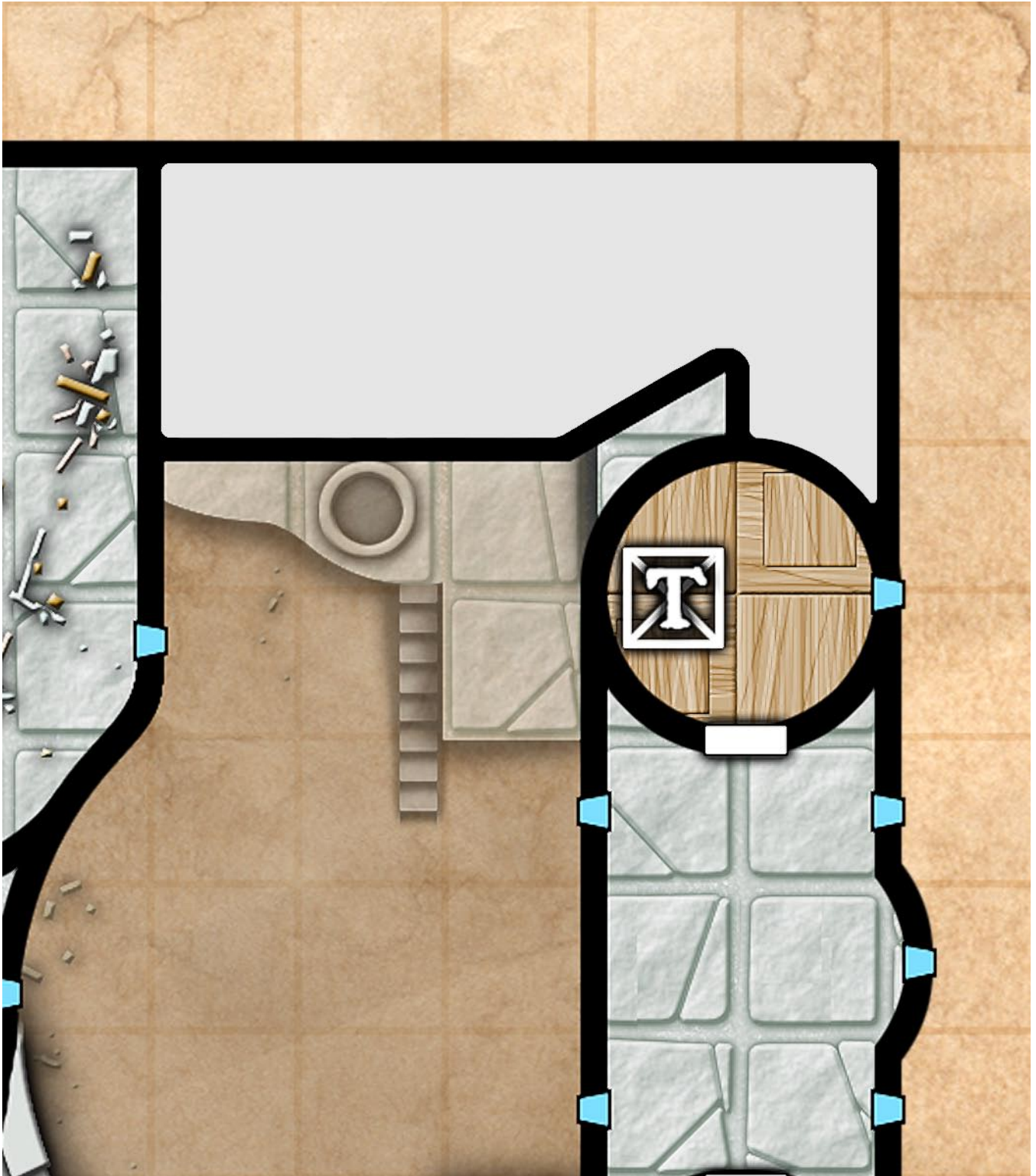
Ptolus Adventure Maps: Pythoness House

PH301



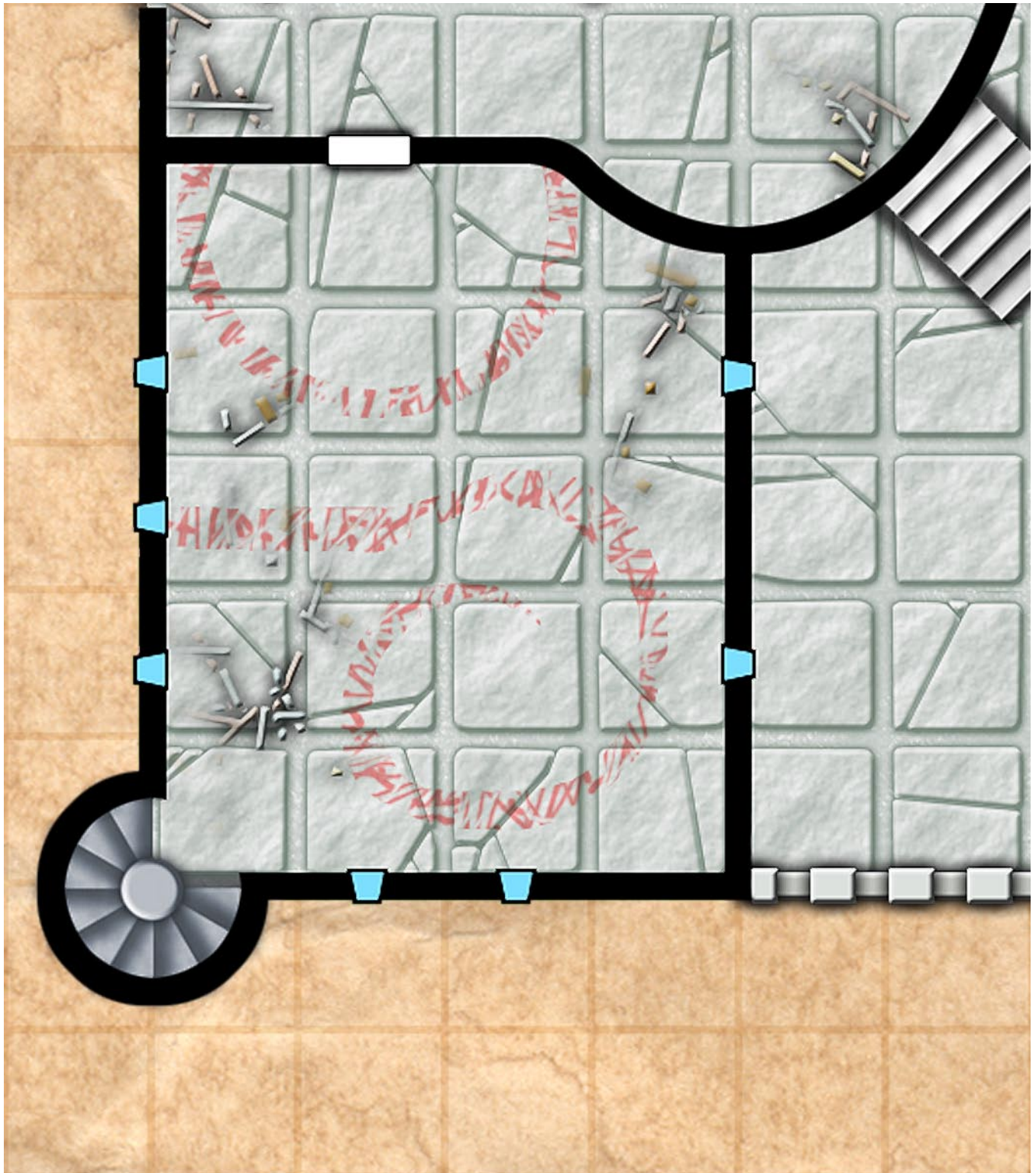
Ptolus Adventure Maps: Pythoness House

PH302



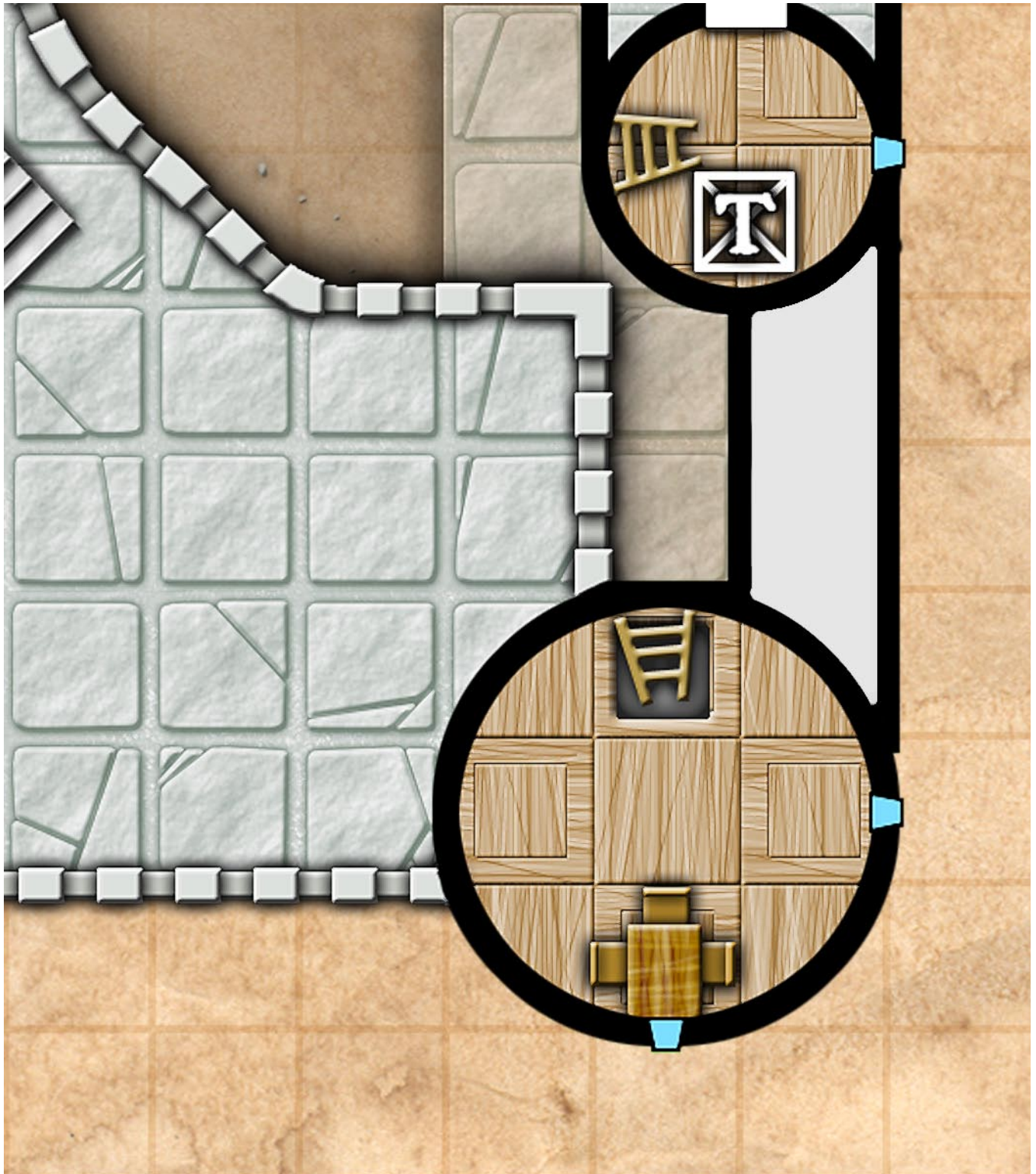
Ptolus Adventure Maps: Pythoness House

PH303



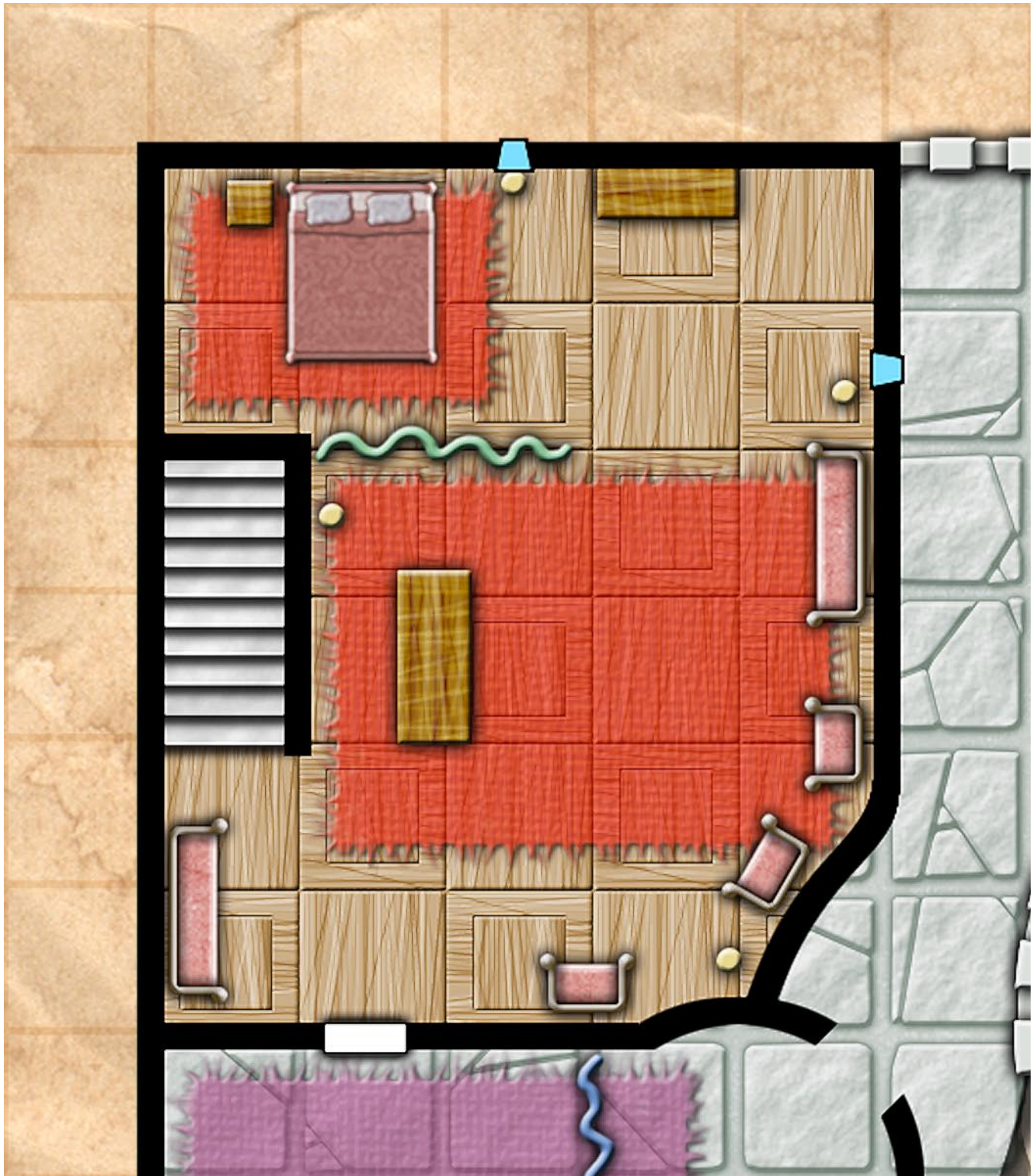
Ptolus Adventure Maps: Pythoness House

PH304



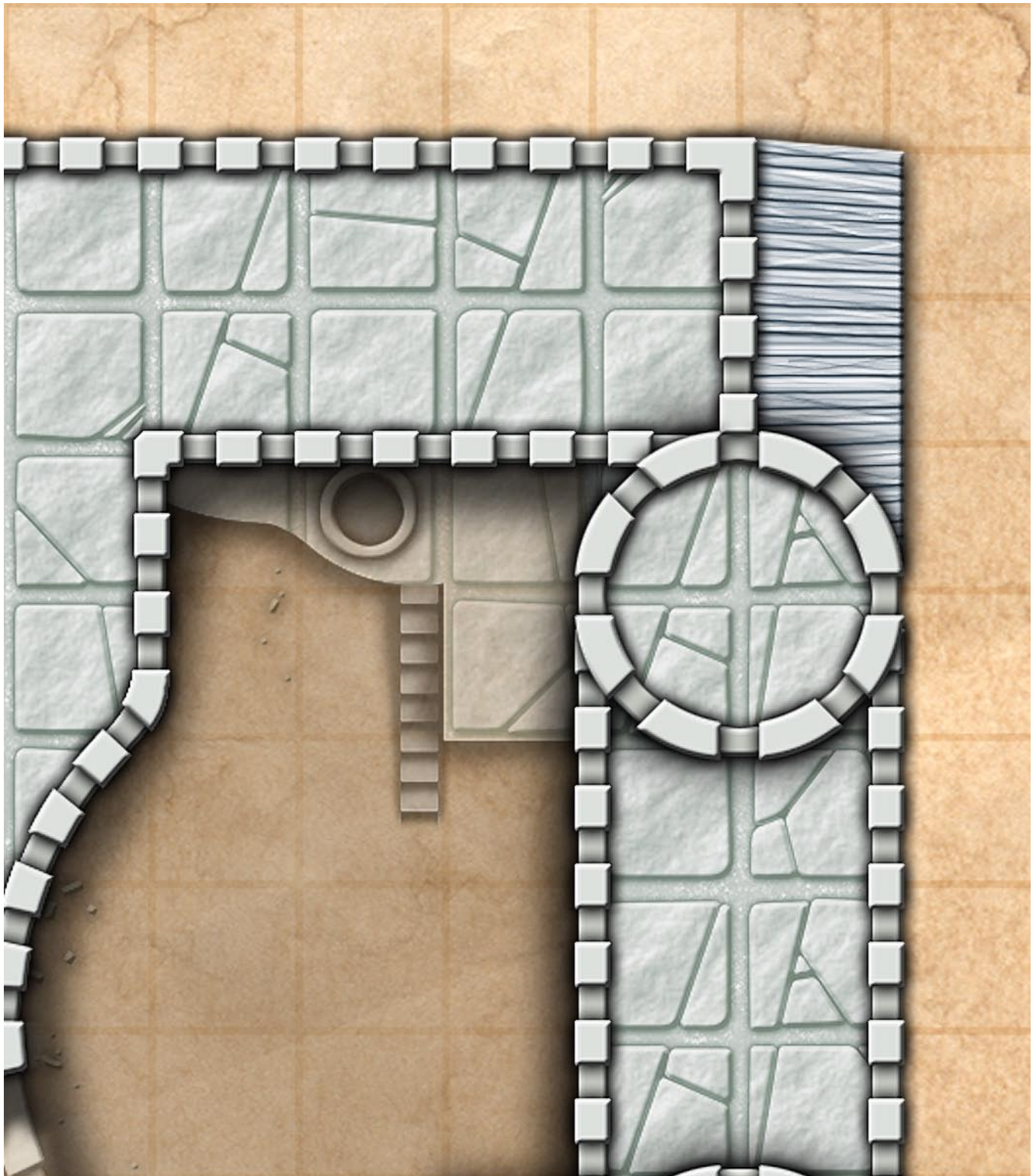
Ptolus Adventure Maps: Pythoness House

PH401



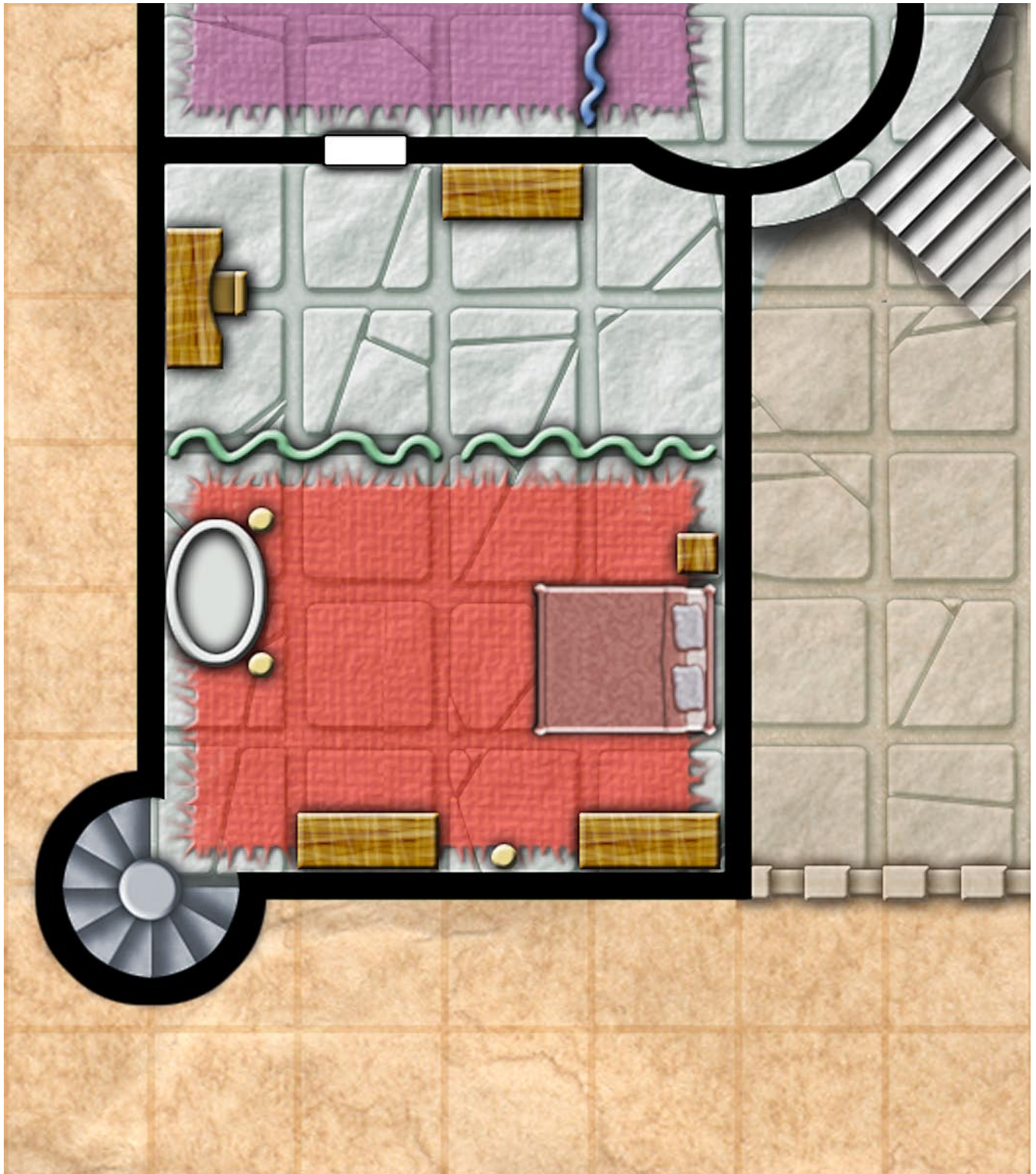
Ptolus Adventure Maps: Pythoness House

PH402



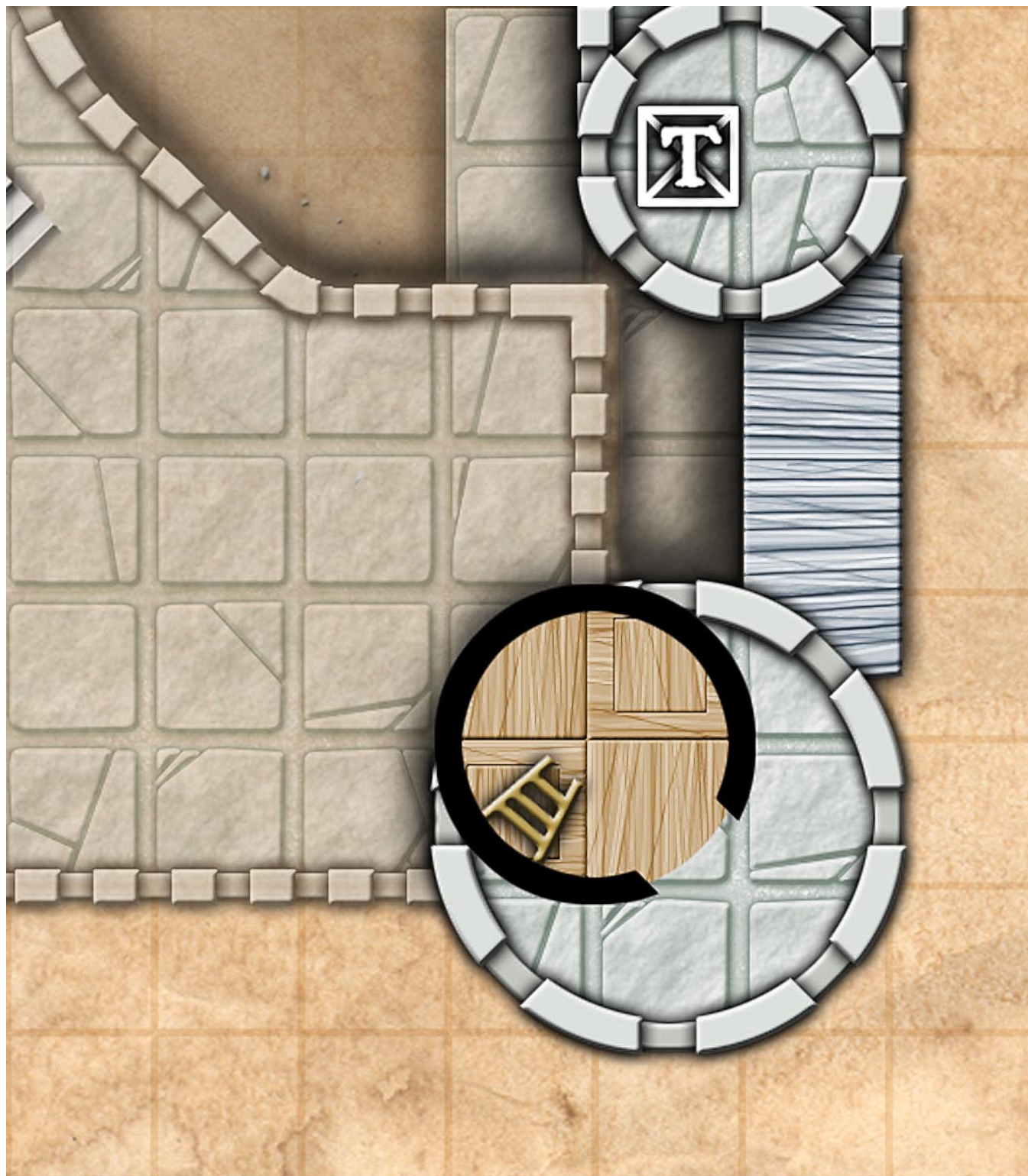
Ptolus Adventure Maps: Pythoness House

PH403



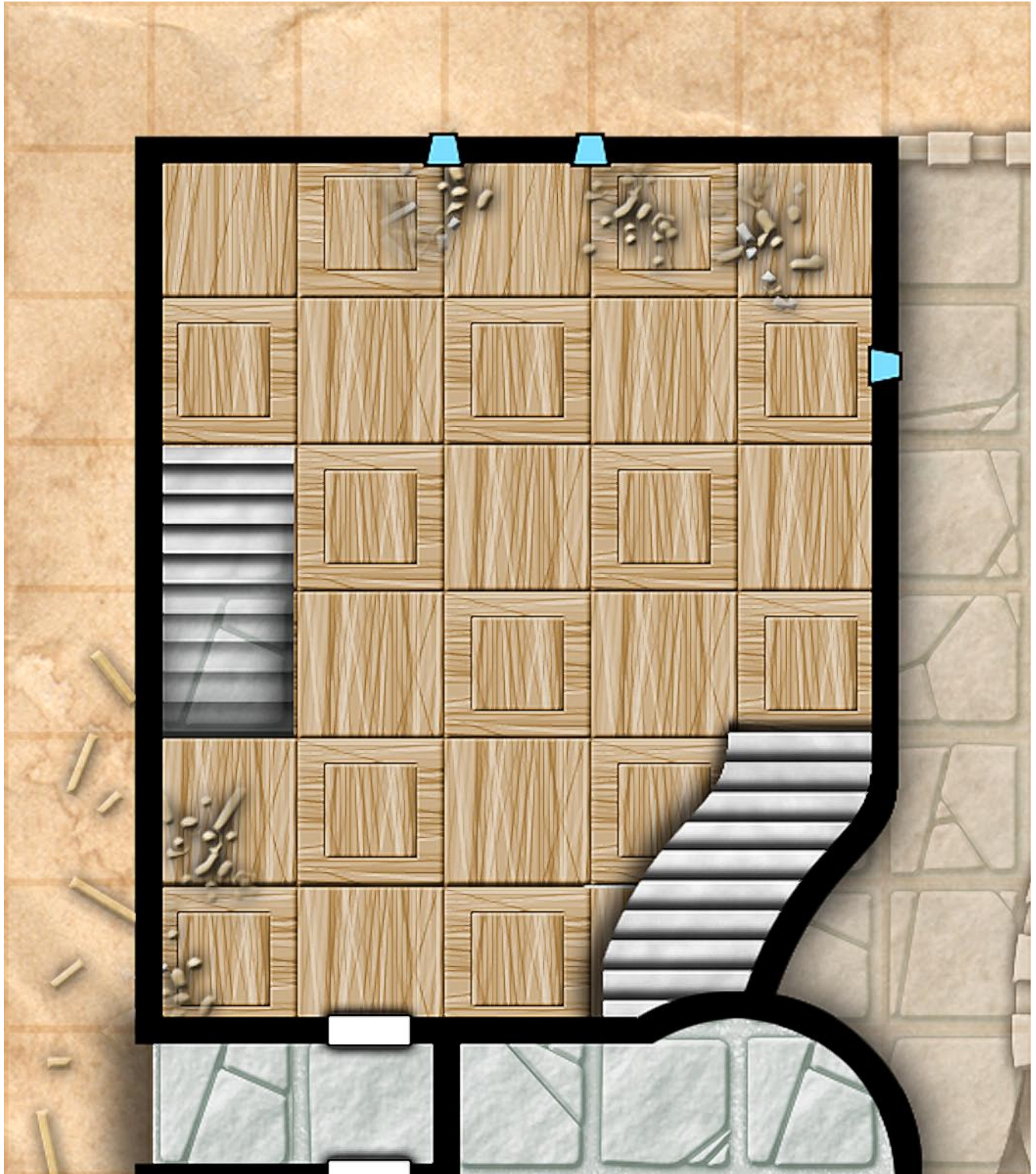
Ptolus Adventure Maps: Pythoness House

PH404



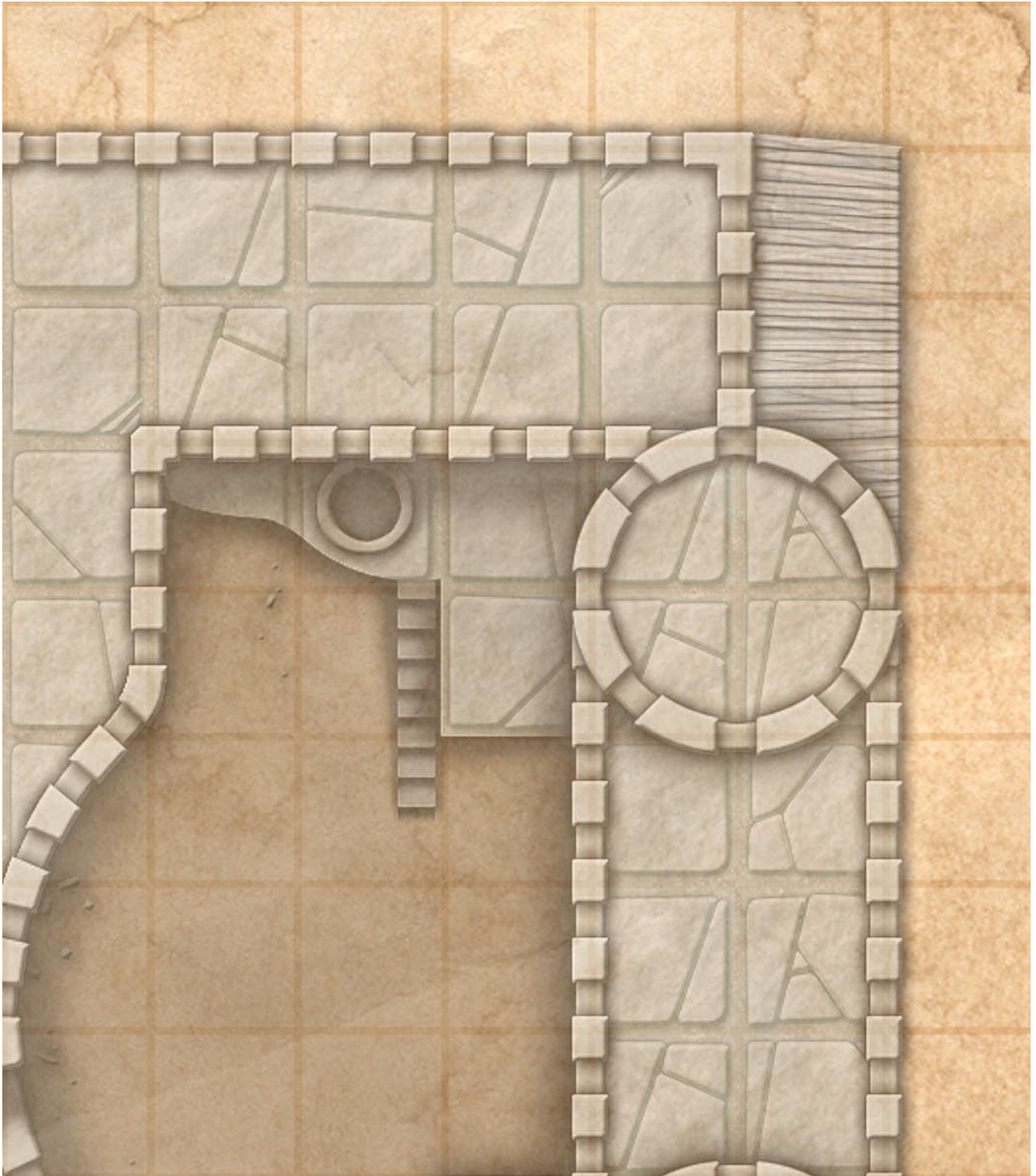
Ptolus Adventure Maps: Pythoness House

PH501



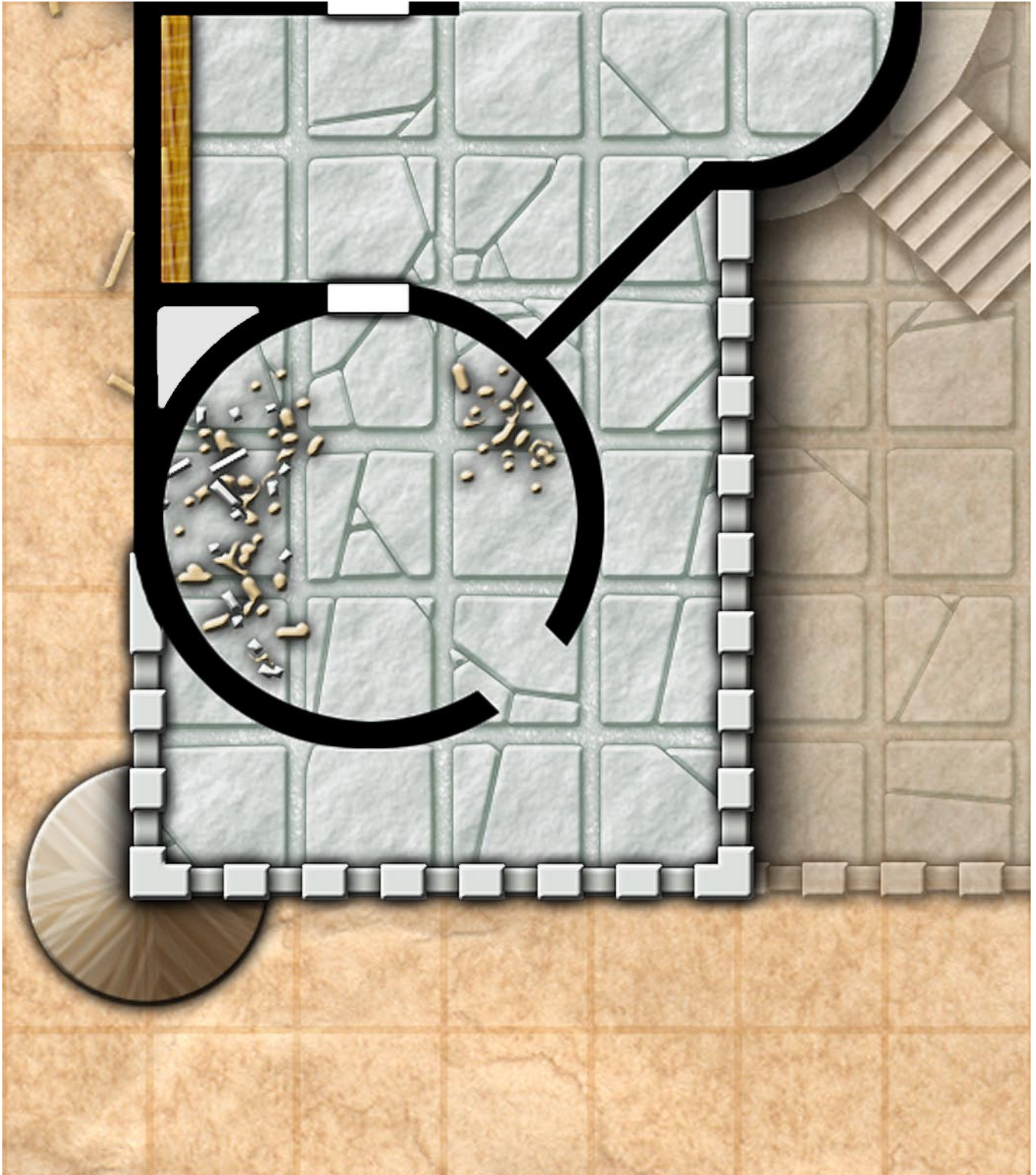
Ptolus Adventure Maps: Pythoness House

PH502



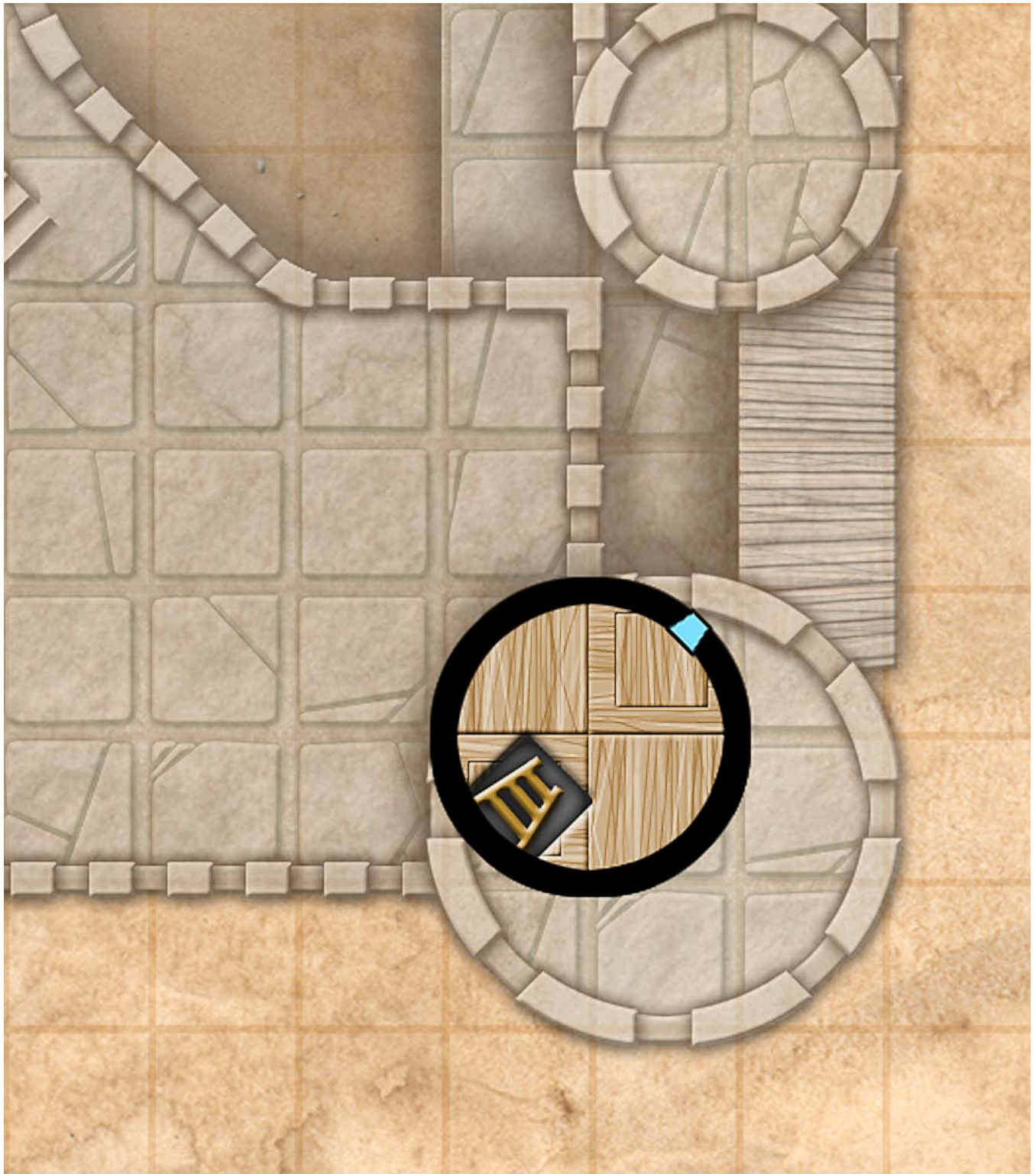
Ptolus Adventure Maps: Pythoness House

PH503



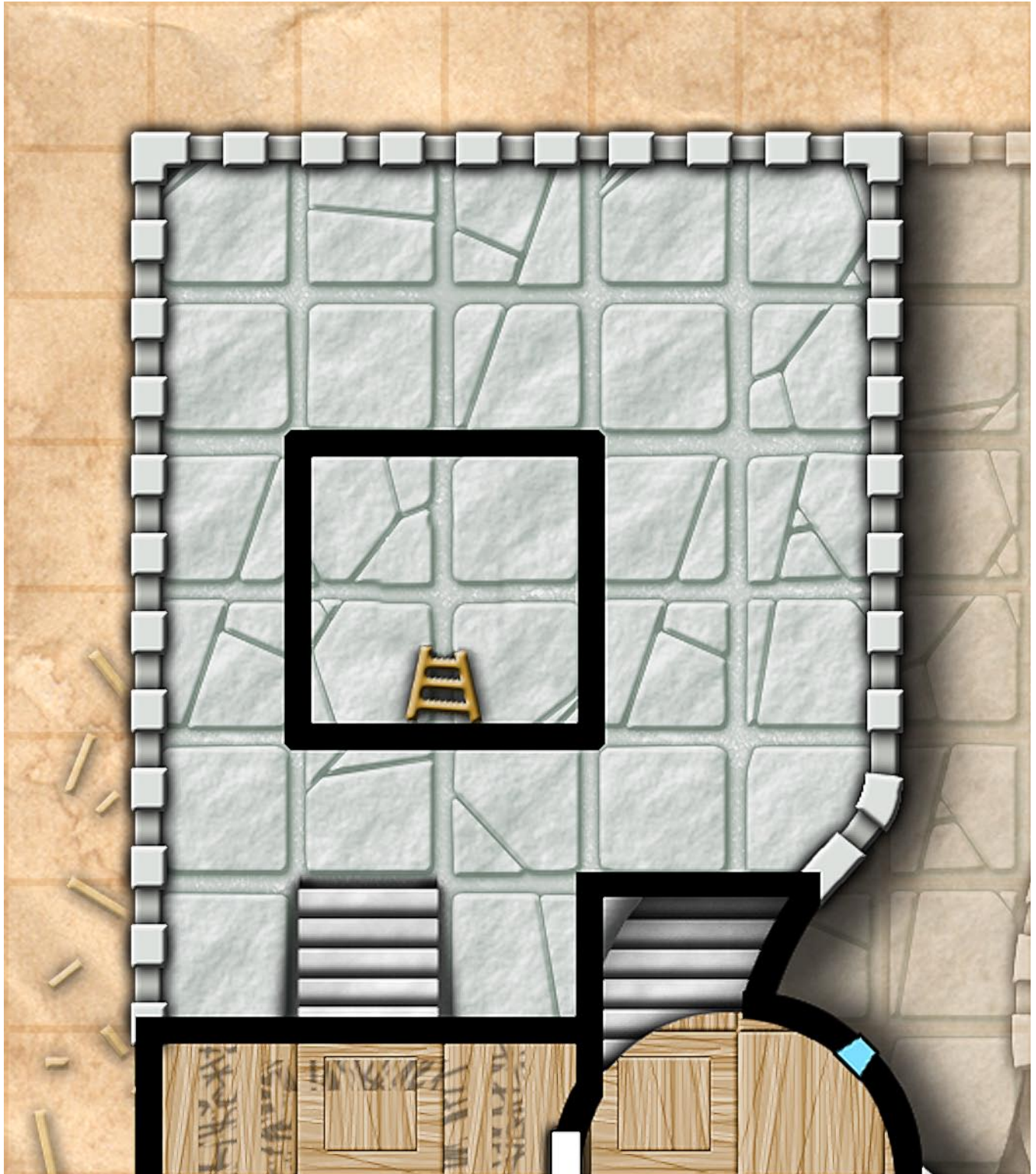
Ptolus Adventure Maps: Pythoness House

PH504



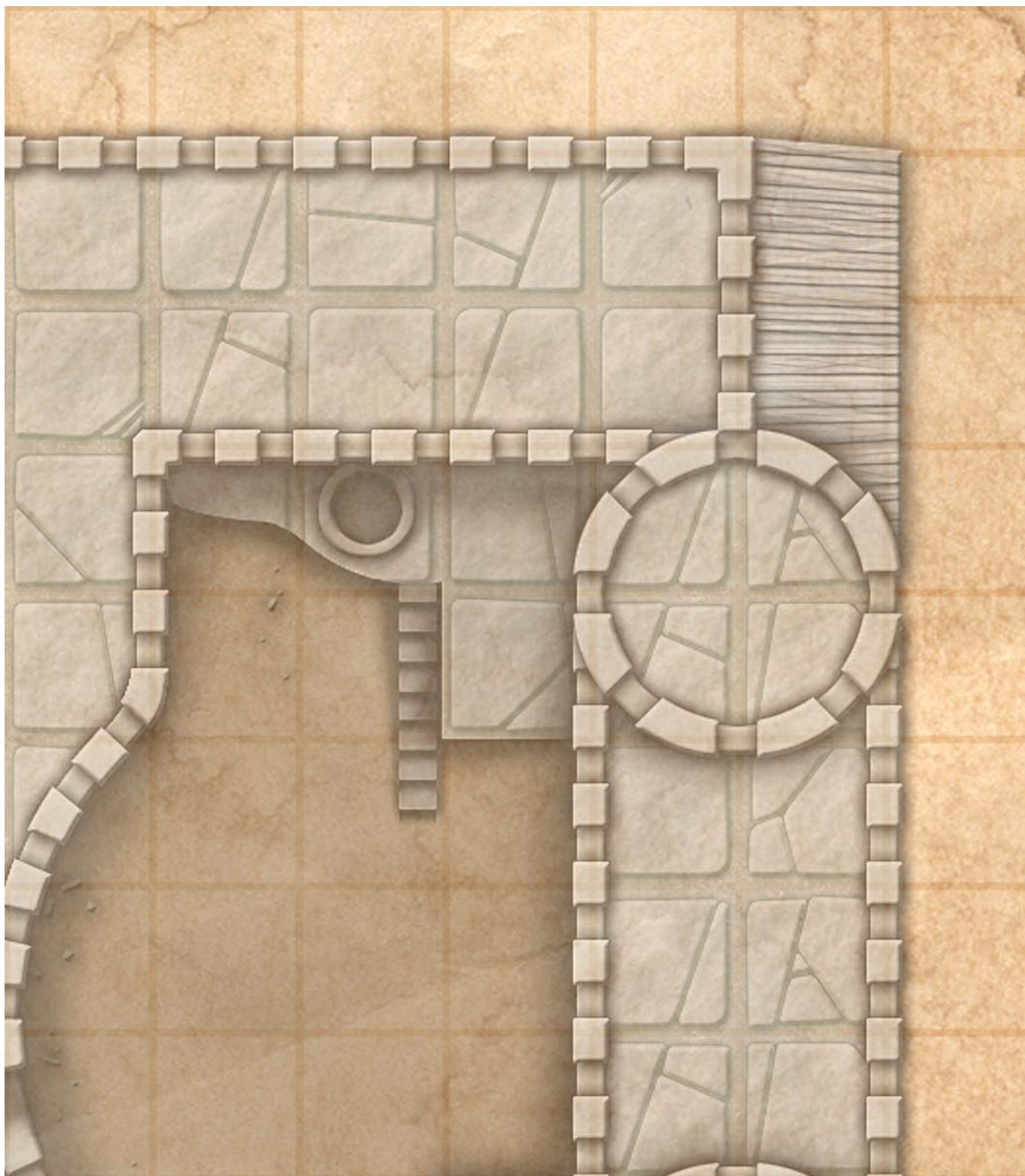
Ptolus Adventure Maps: Pythoness House

PH6o1



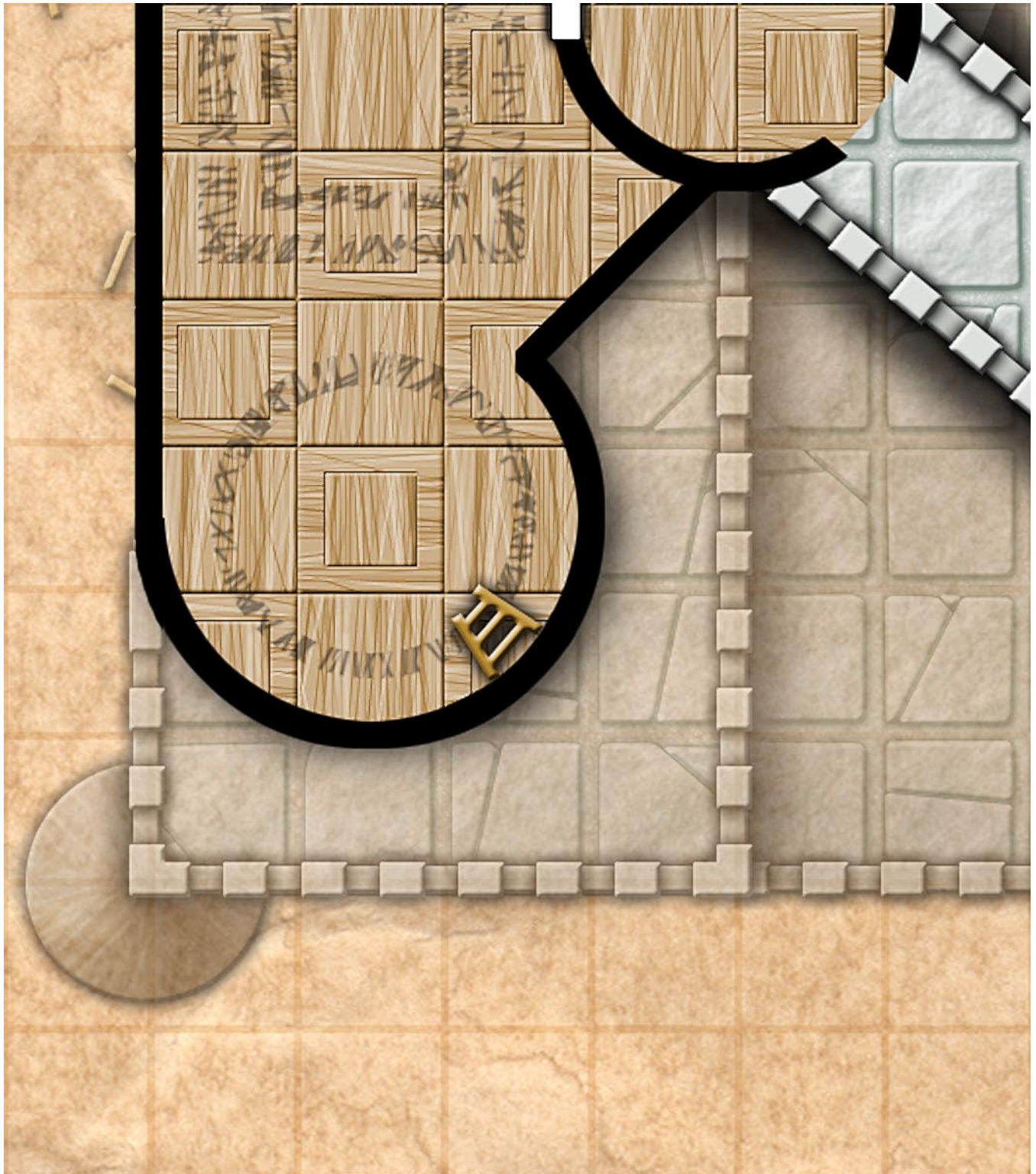
Ptolus Adventure Maps: Pythoness House

PH6o2



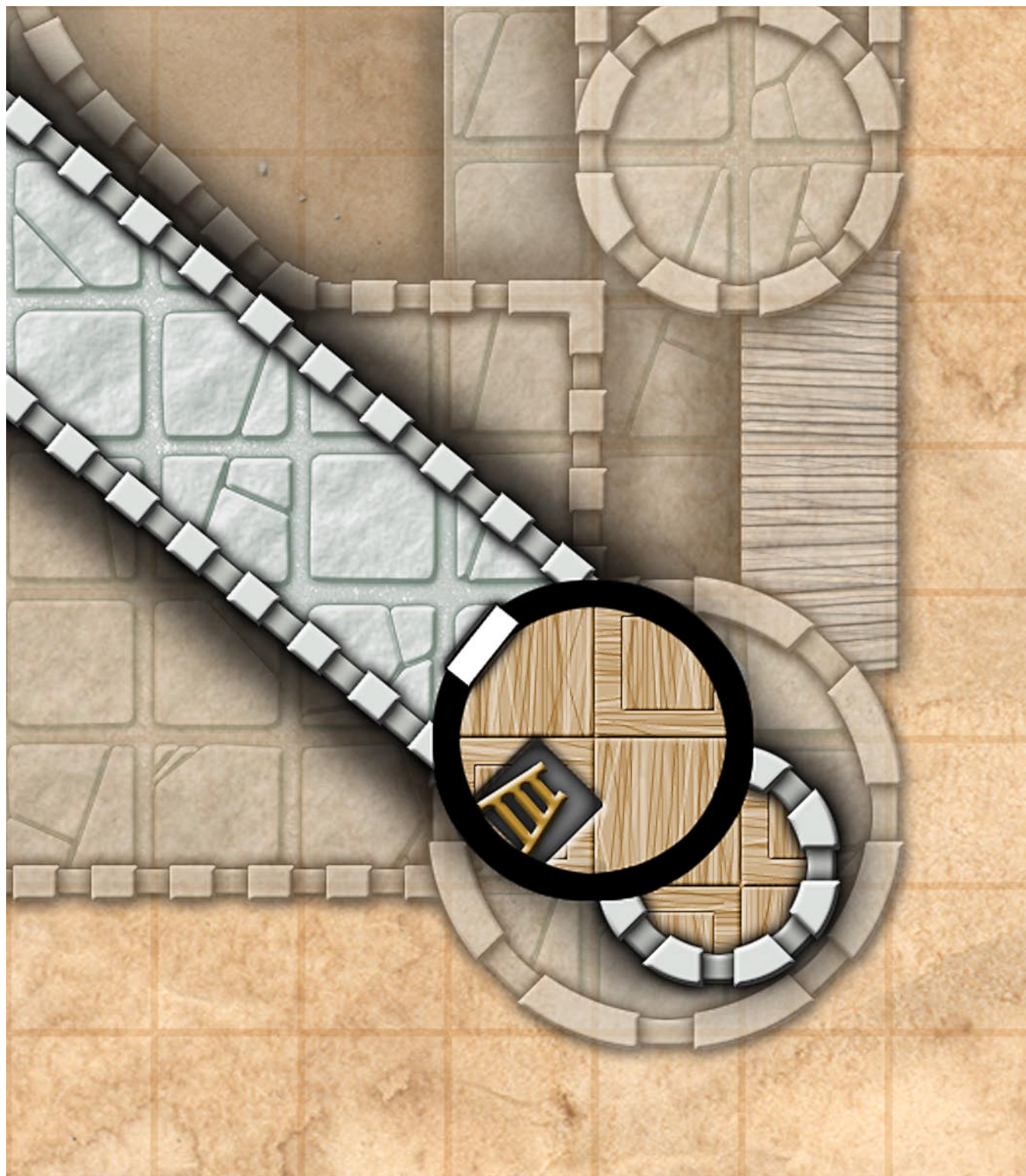
Ptolus Adventure Maps: Pythoness House

PH603



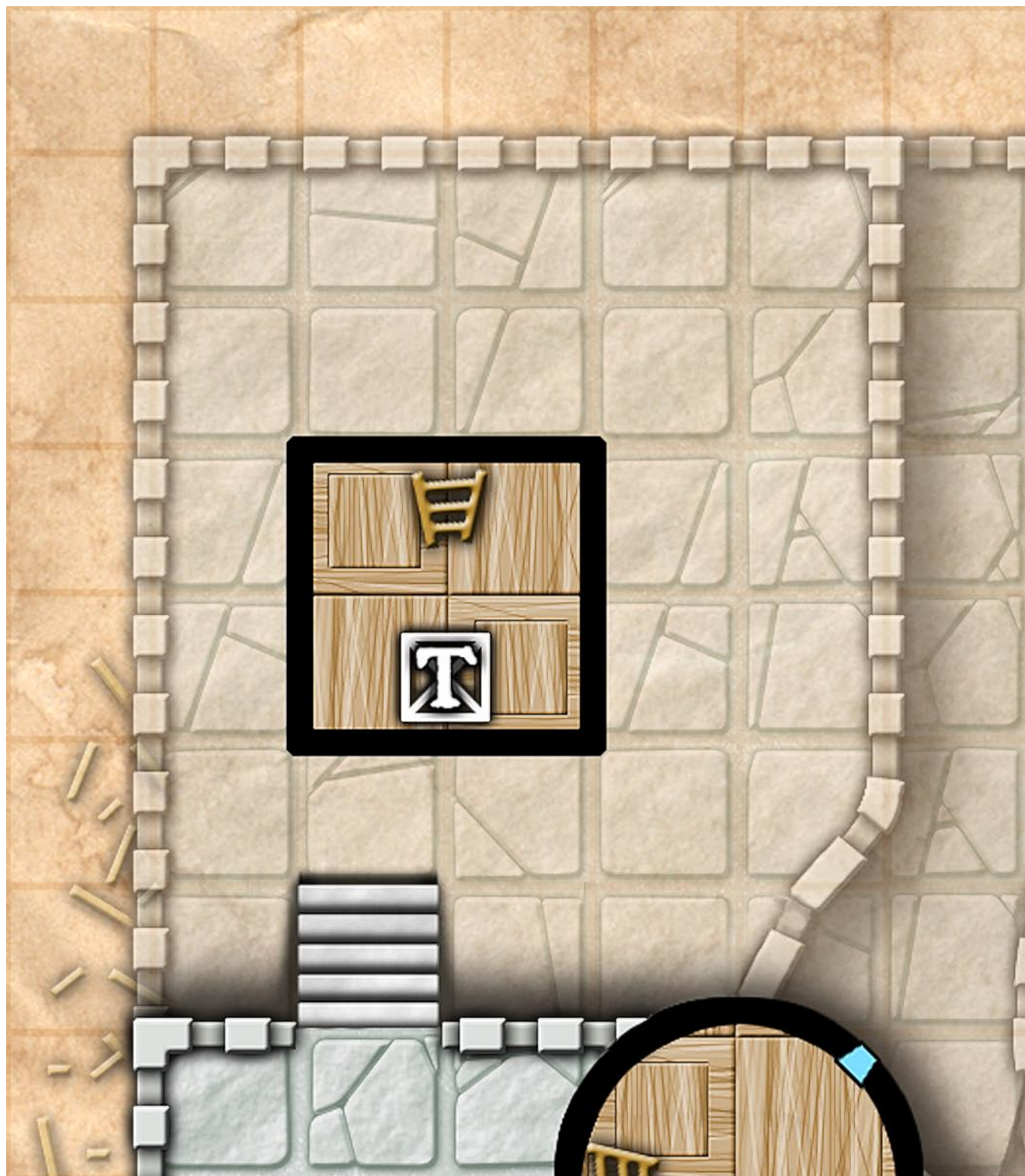
Ptolus Adventure Maps: Pythoness House

PH604



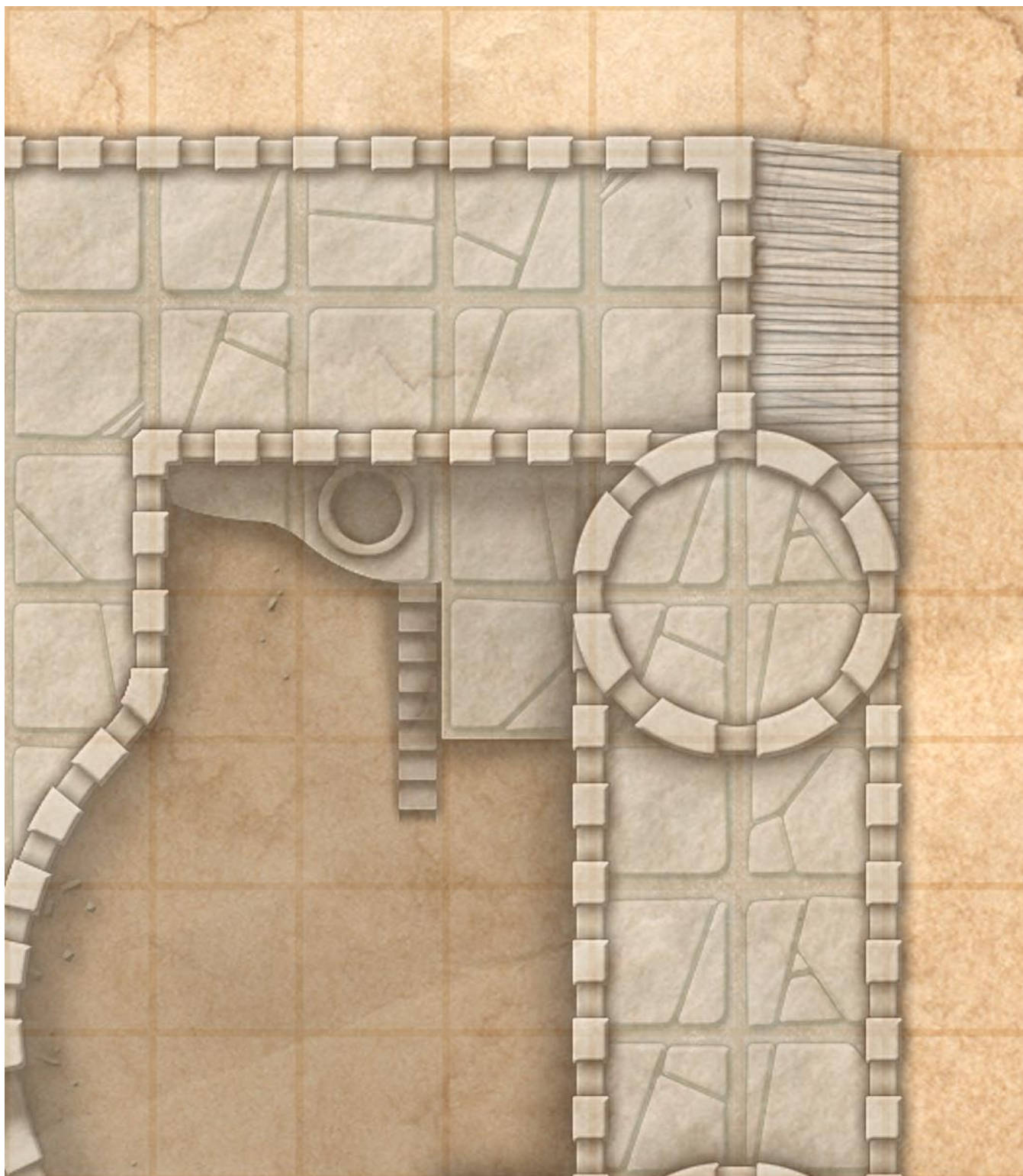
Ptolus Adventure Maps: Pythoness House

PH701



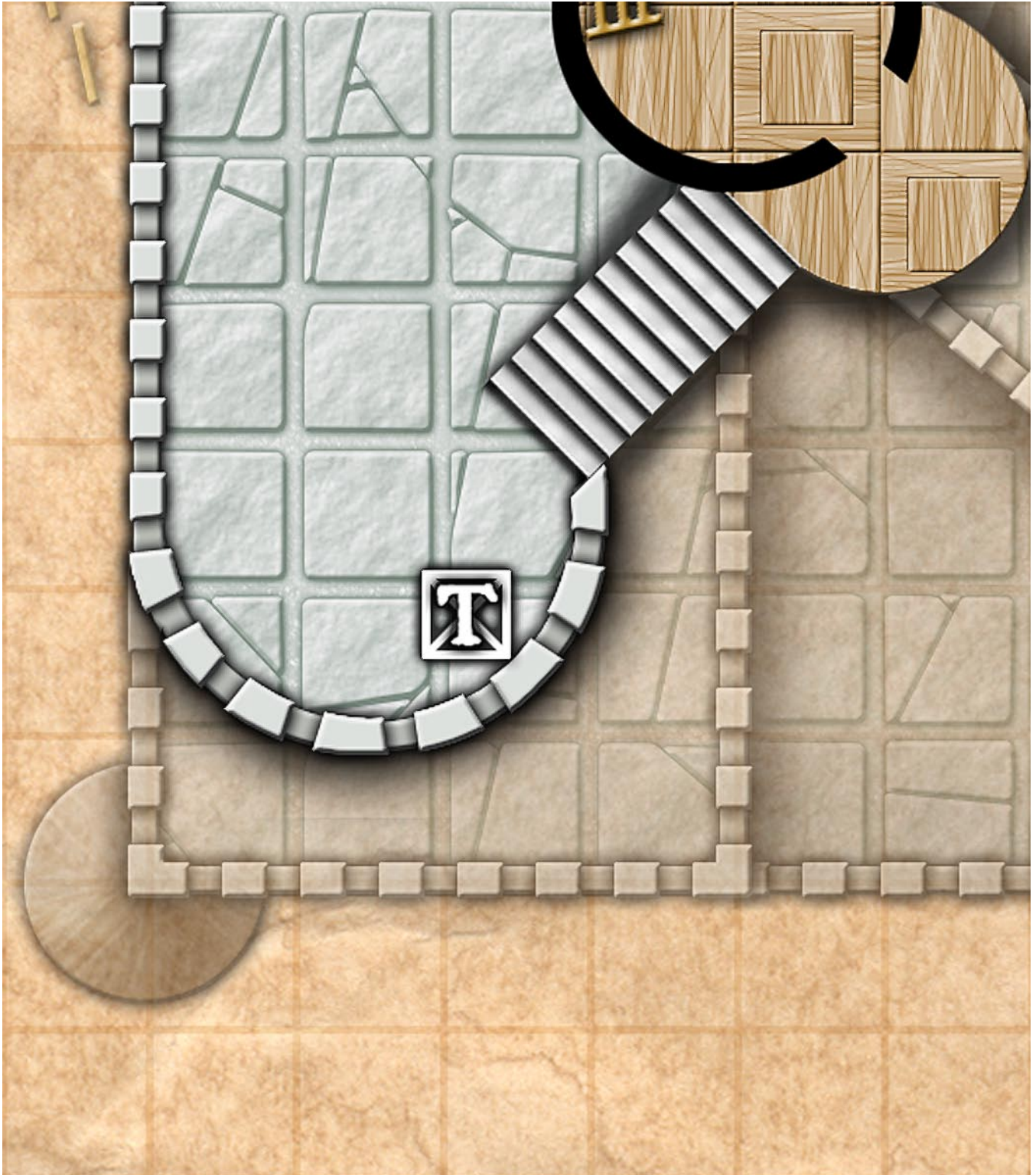
Ptolus Adventure Maps: Pythoness House

PH702



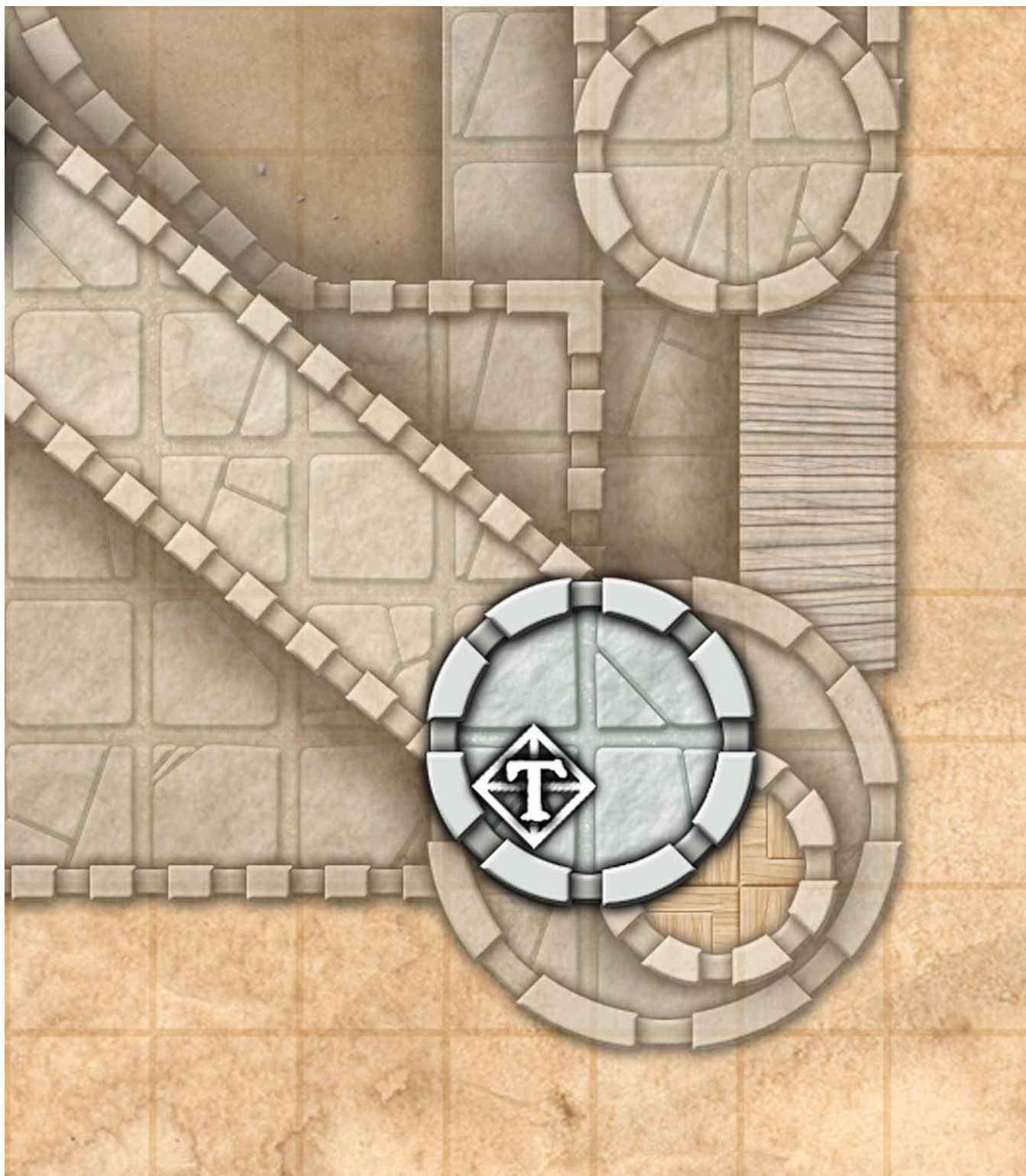
Ptolus Adventure Maps: Pythoness House

PH703



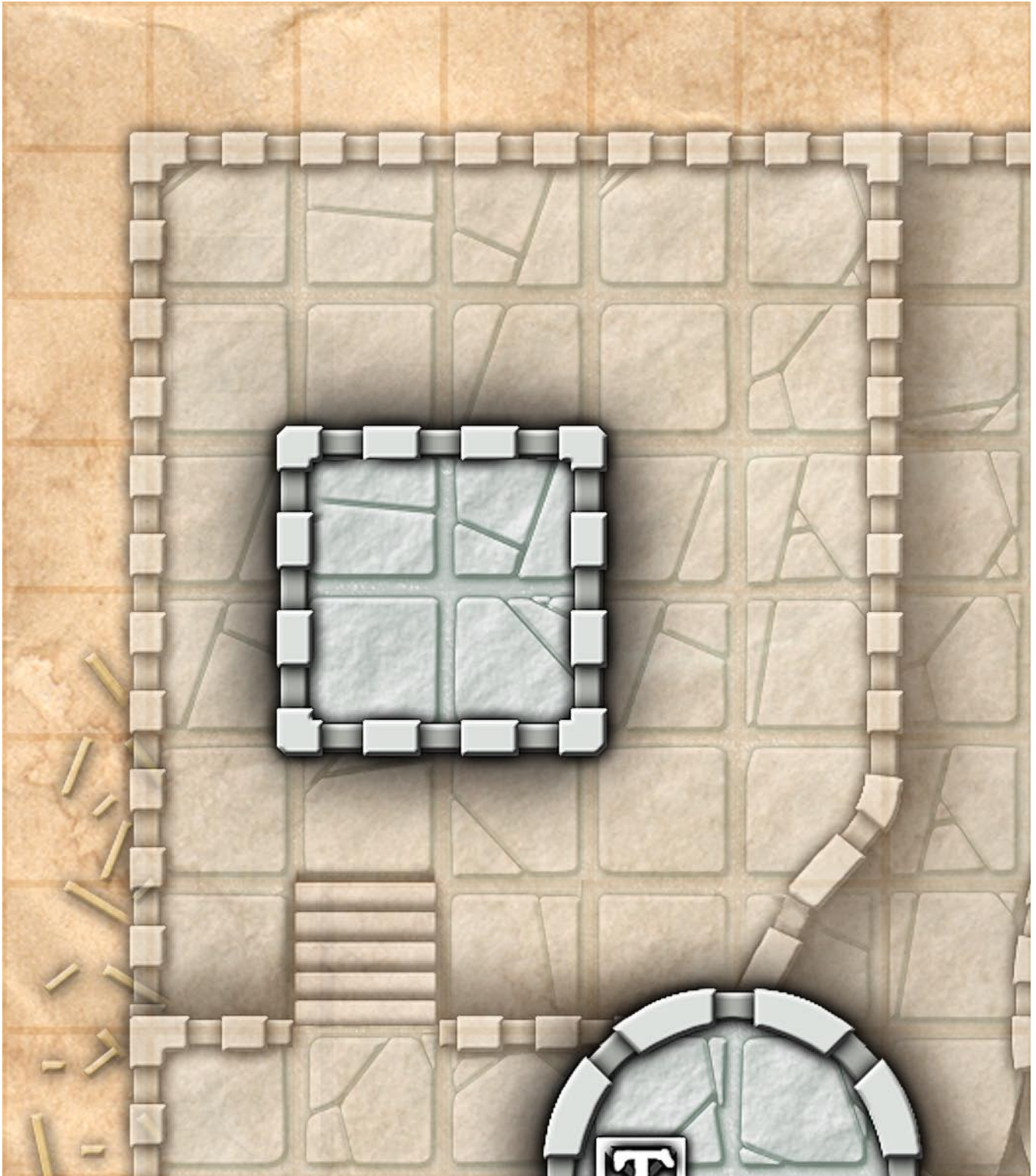
Ptolus Adventure Maps: Pythoness House

PH704



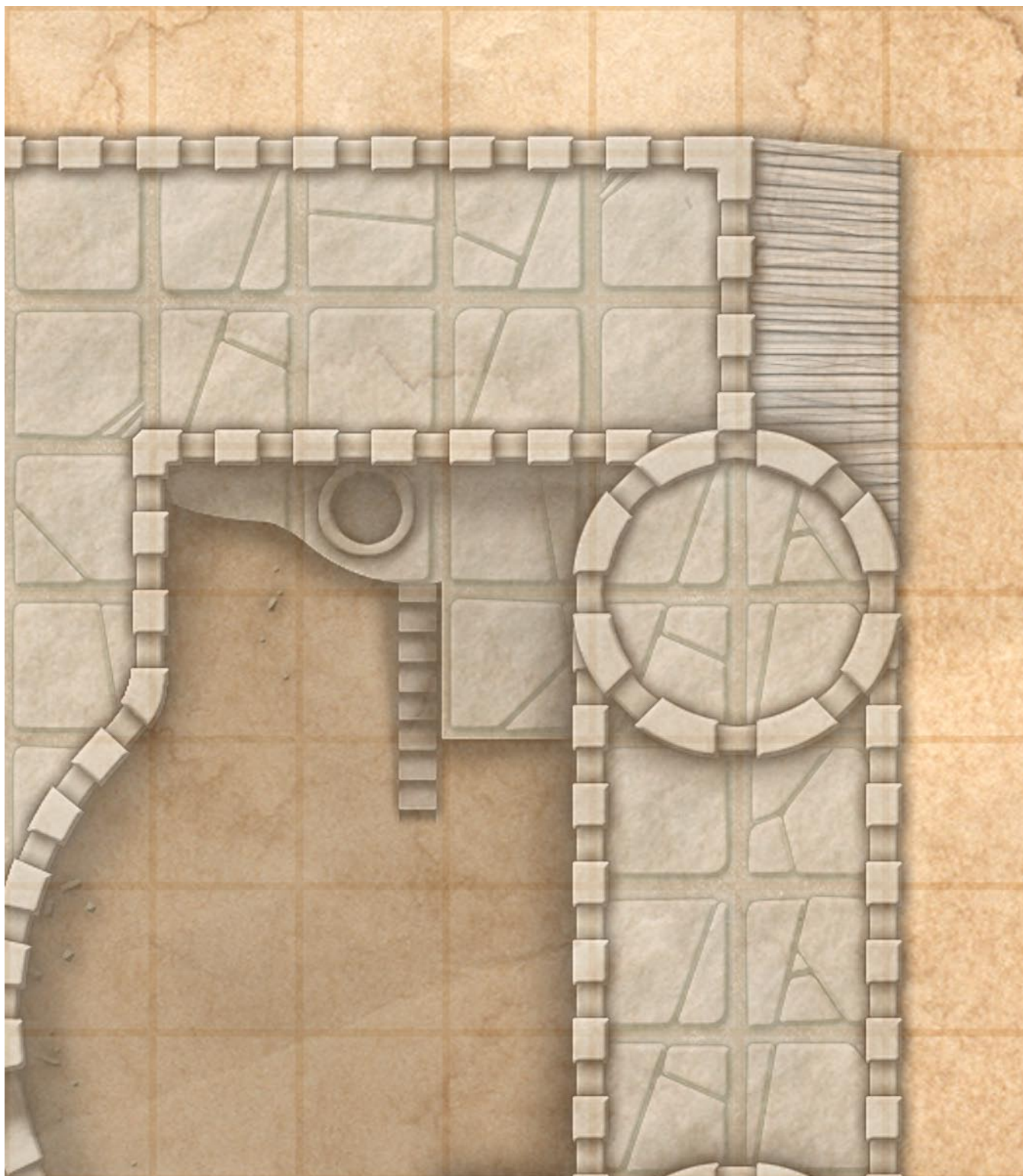
Ptolus Adventure Maps: Pythoness House

PH8o1



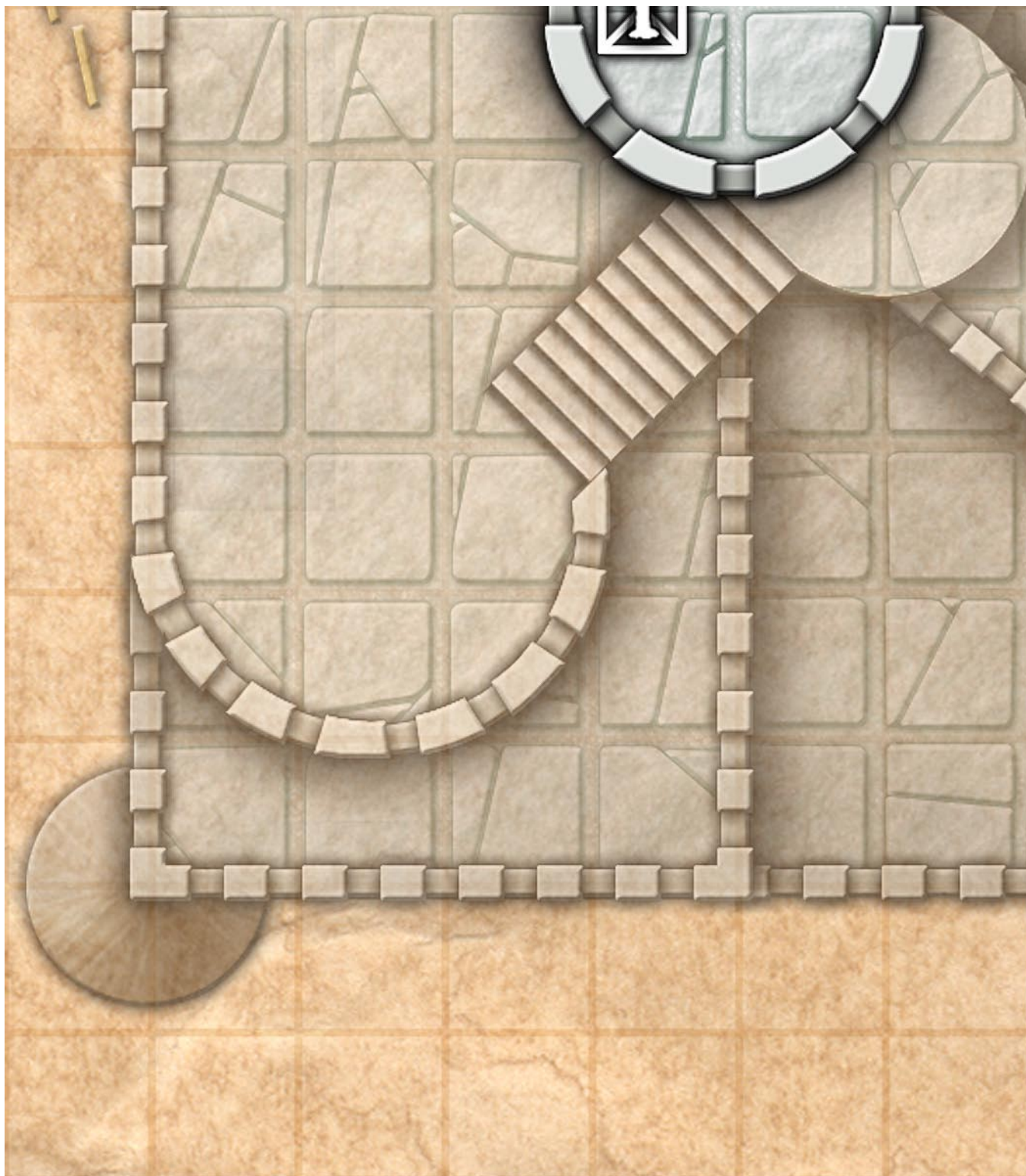
Ptolus Adventure Maps: Pythoness House

PH8o2



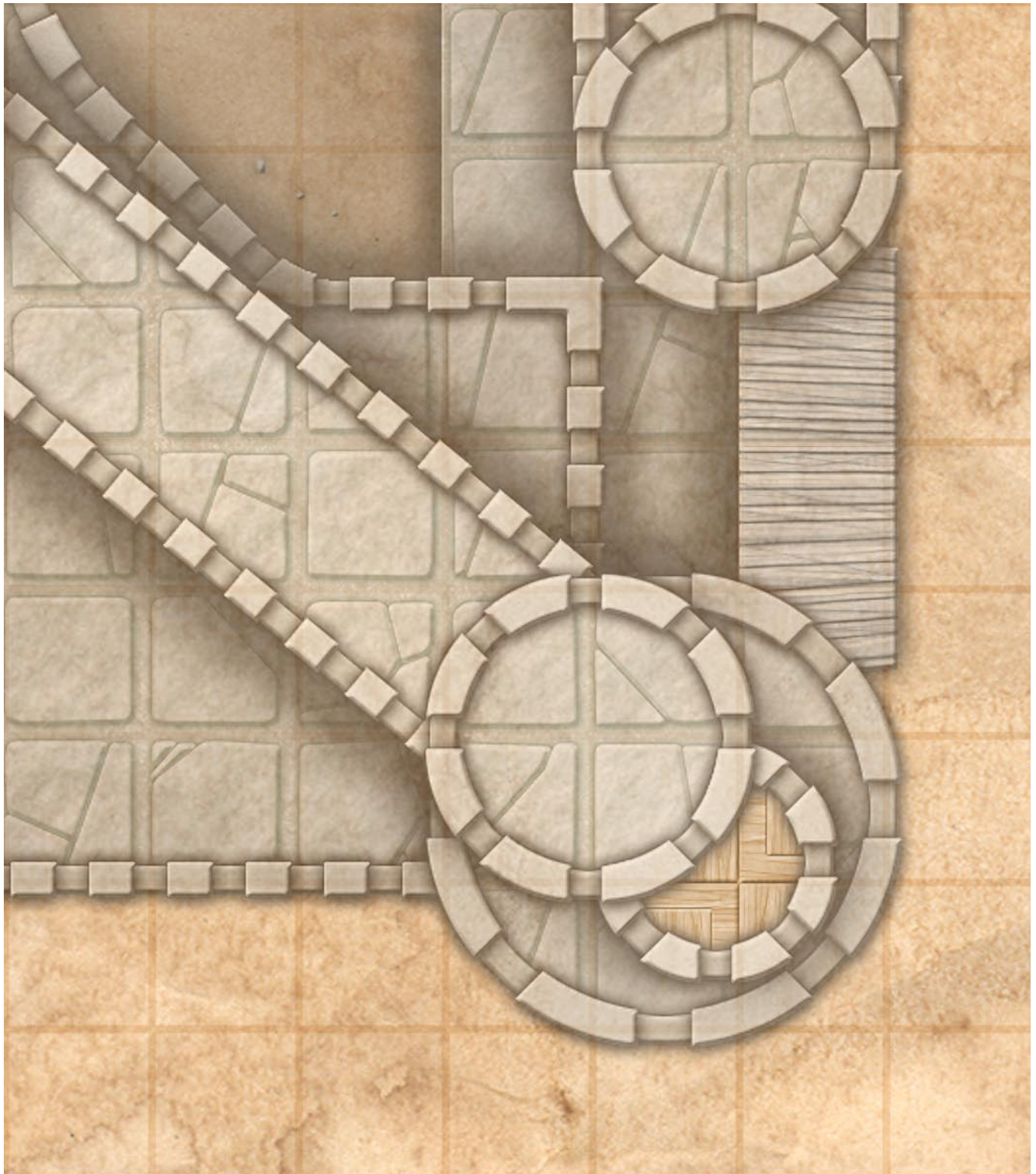
Ptolus Adventure Maps: Pythoness House

PH803



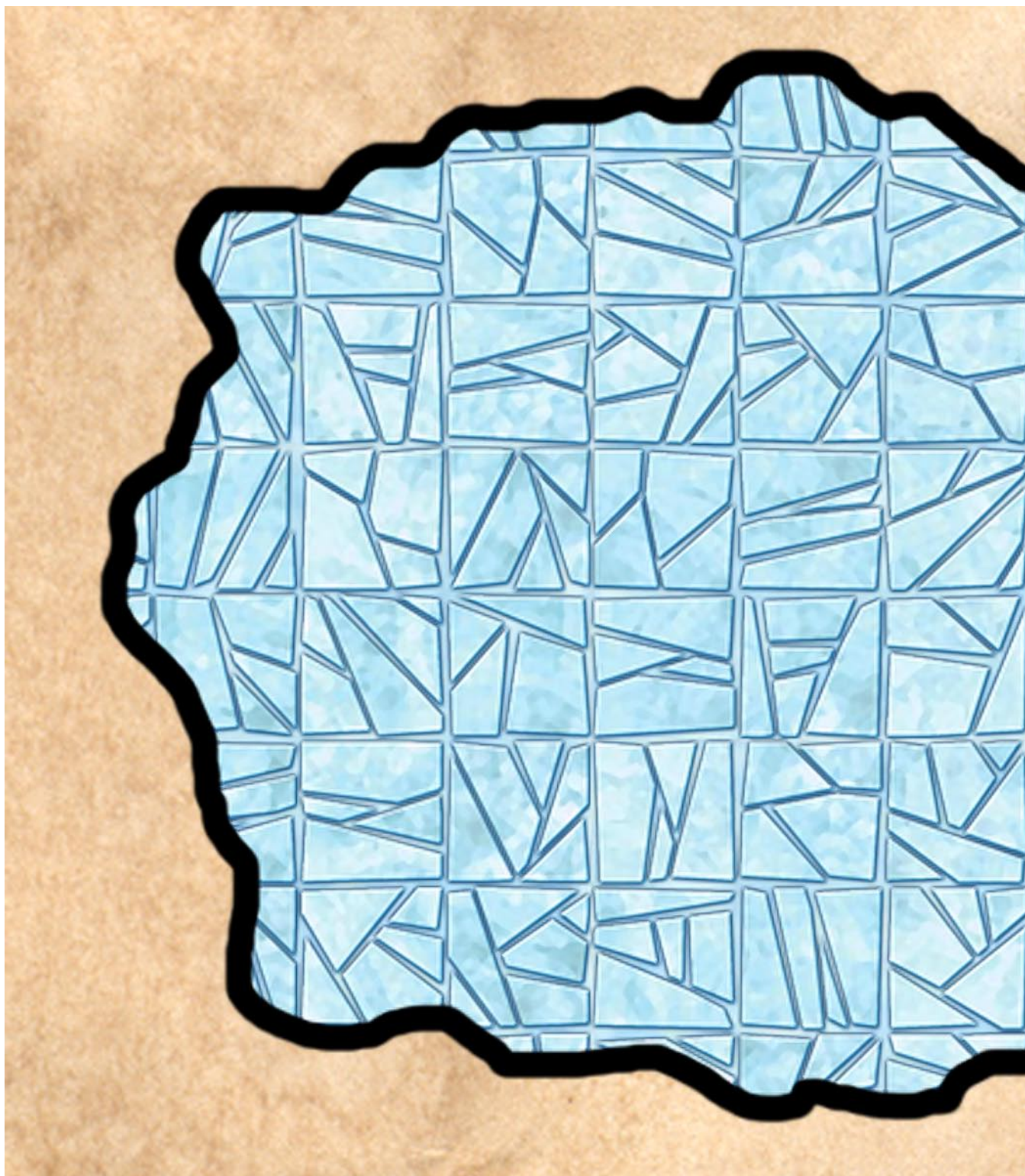
Ptolus Adventure Maps: Pythoness House

PH804



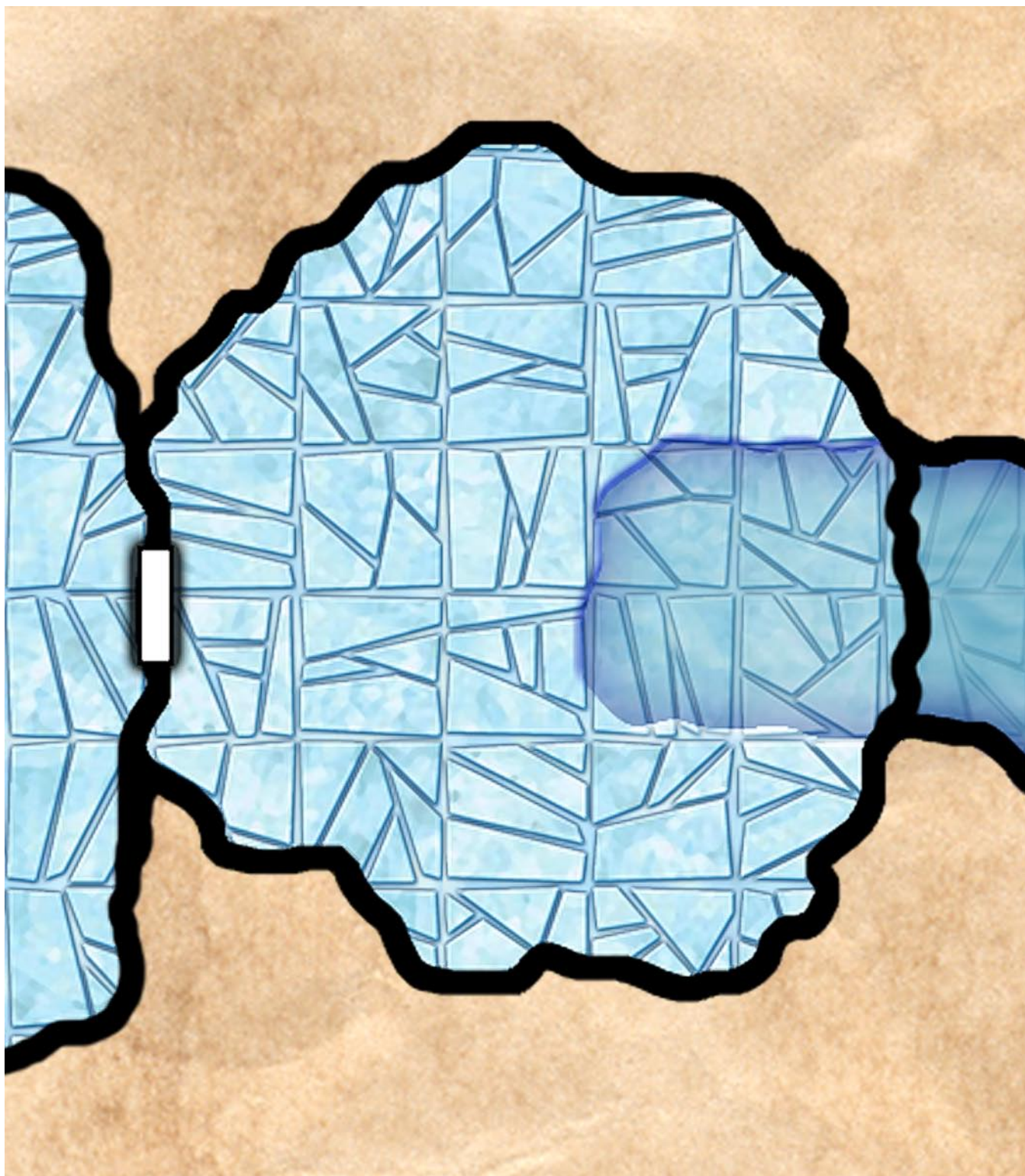
Ptolus Adventure Maps: Pythoness House

PHU01



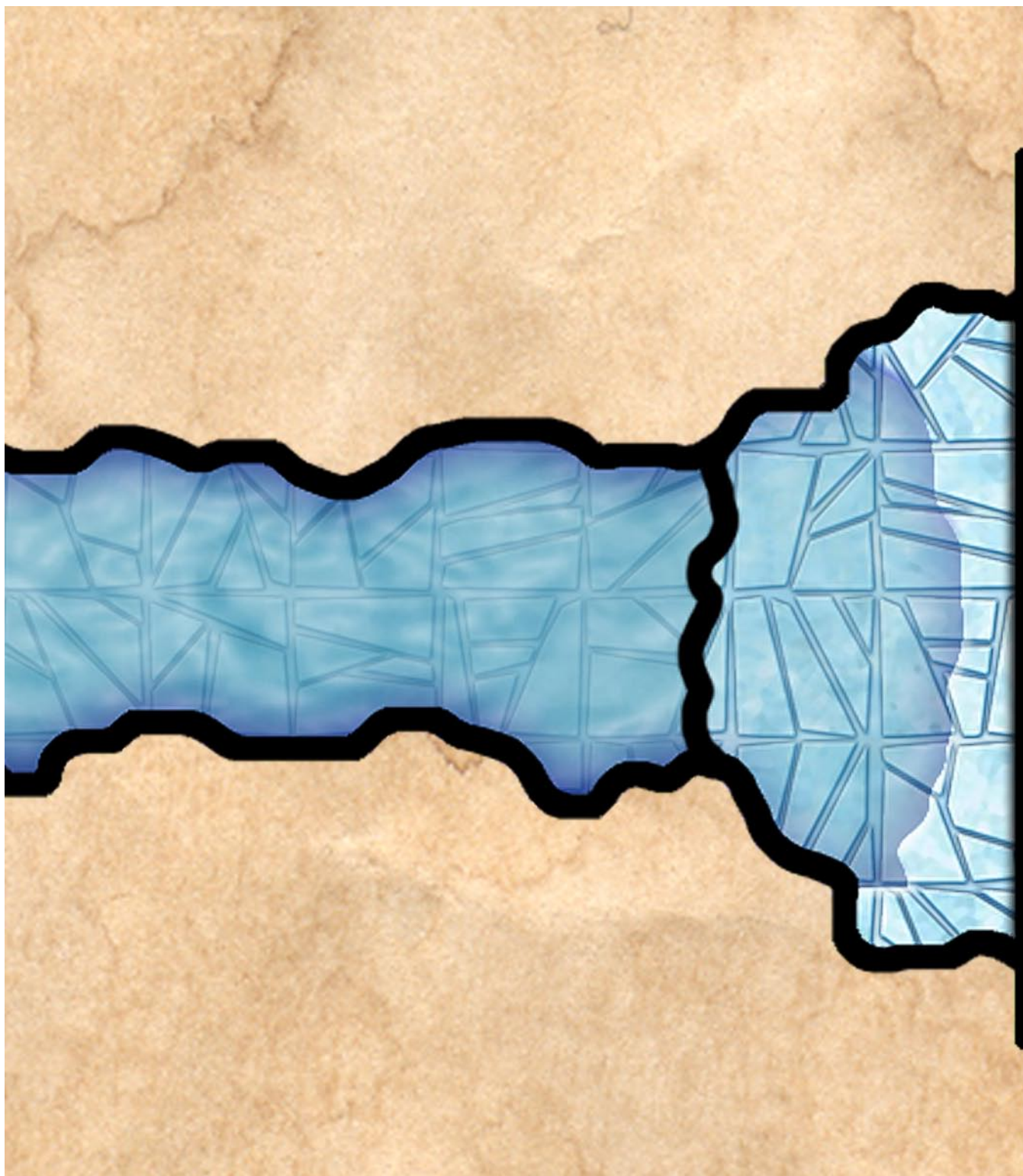
Ptolus Adventure Maps: Pythoness House

PHU02



Ptolus Adventure Maps: Pythoness House

PHU03



Ptolus Adventure Maps: Pythoness House

PHUo4

