

This is not a Glue Tab. Just bend at an inward angle to help keep walls from bowing inward.

1



These fold down onto roof flaps

By Tommygun

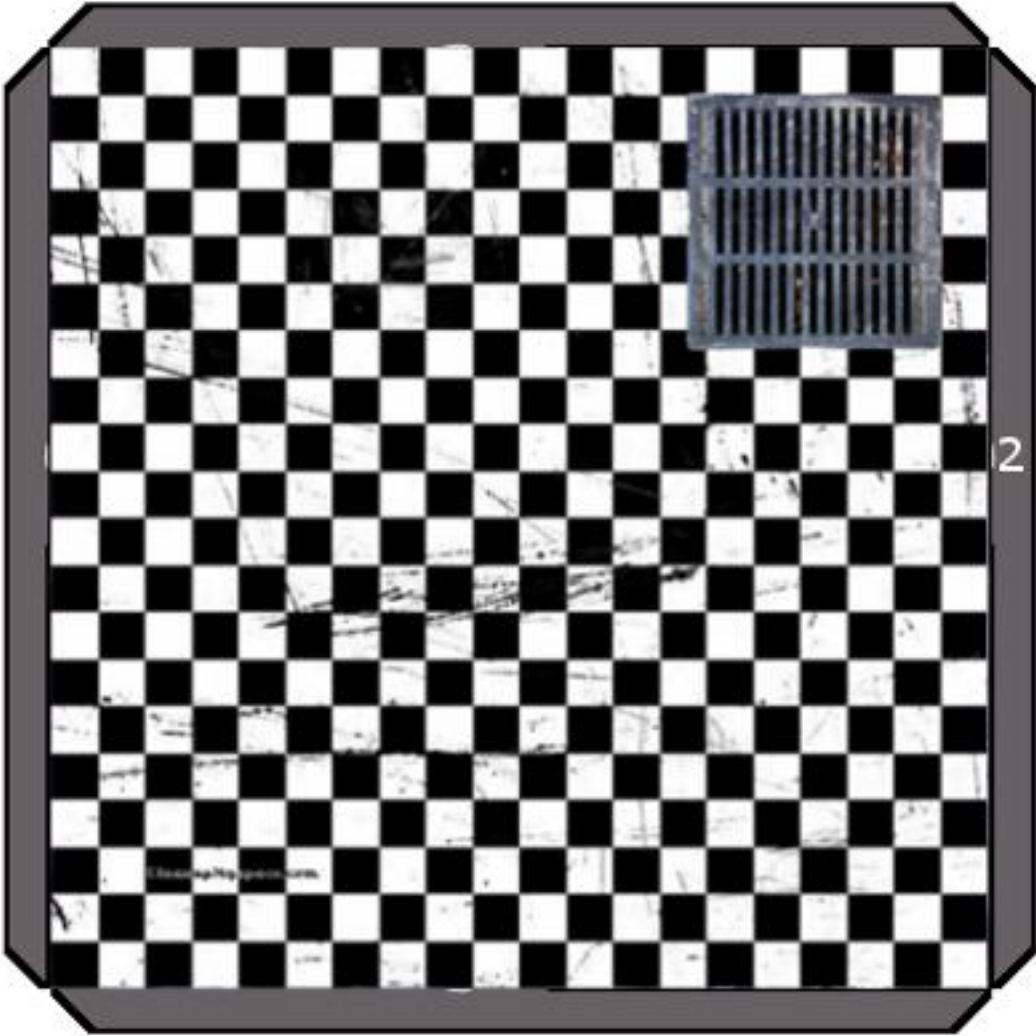
This is not a Glue Tab. Just bend at an inward angle to help keep walls from bowing inward.

1





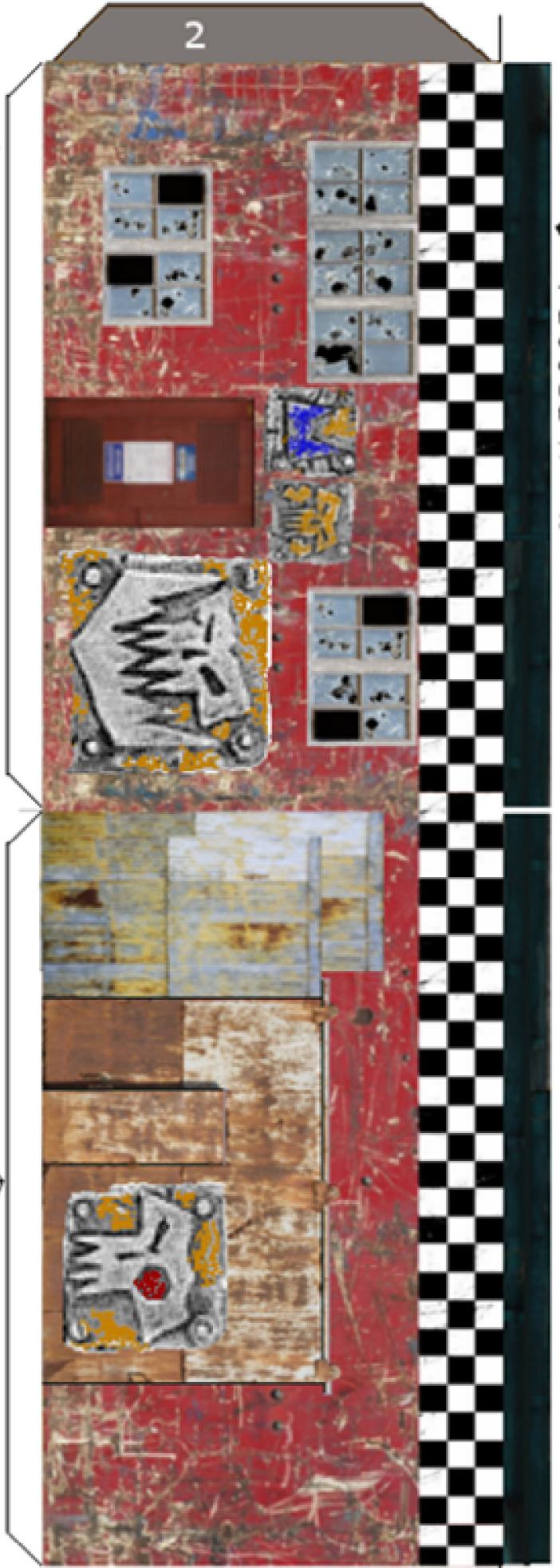
1





This is not a Glue Tab. Just bend at an inward angle to help keep walls from bowing inward.

These fold down onto roof flaps
By Tommygun



This is not a Glue Tab. Just bend at an inward angle to help keep walls from bowing inward.



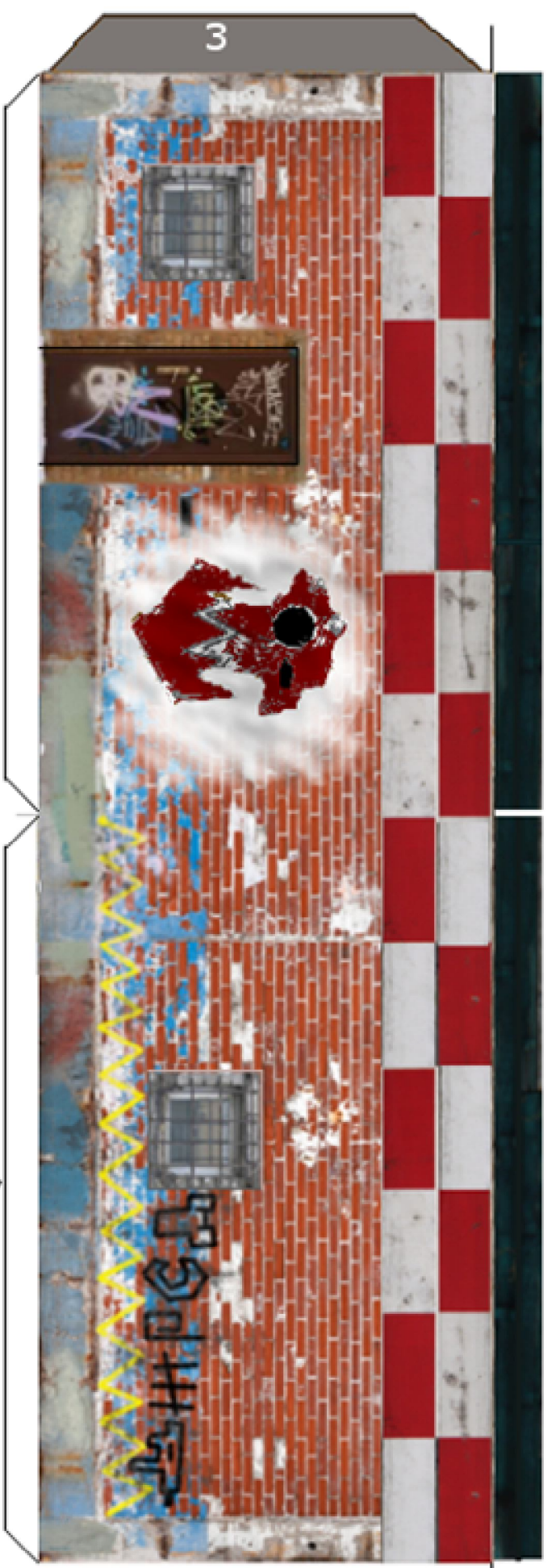


This is not a Glue Tab. Just bend at an inward angle to help keep walls from bowing inward.



These fold down onto roof flaps

By Tommygun



This is not a Glue Tab. Just bend at an inward angle to help keep walls from bowing inward.



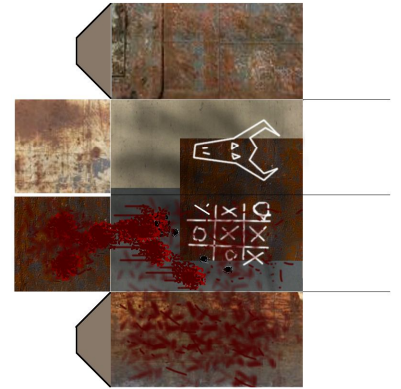
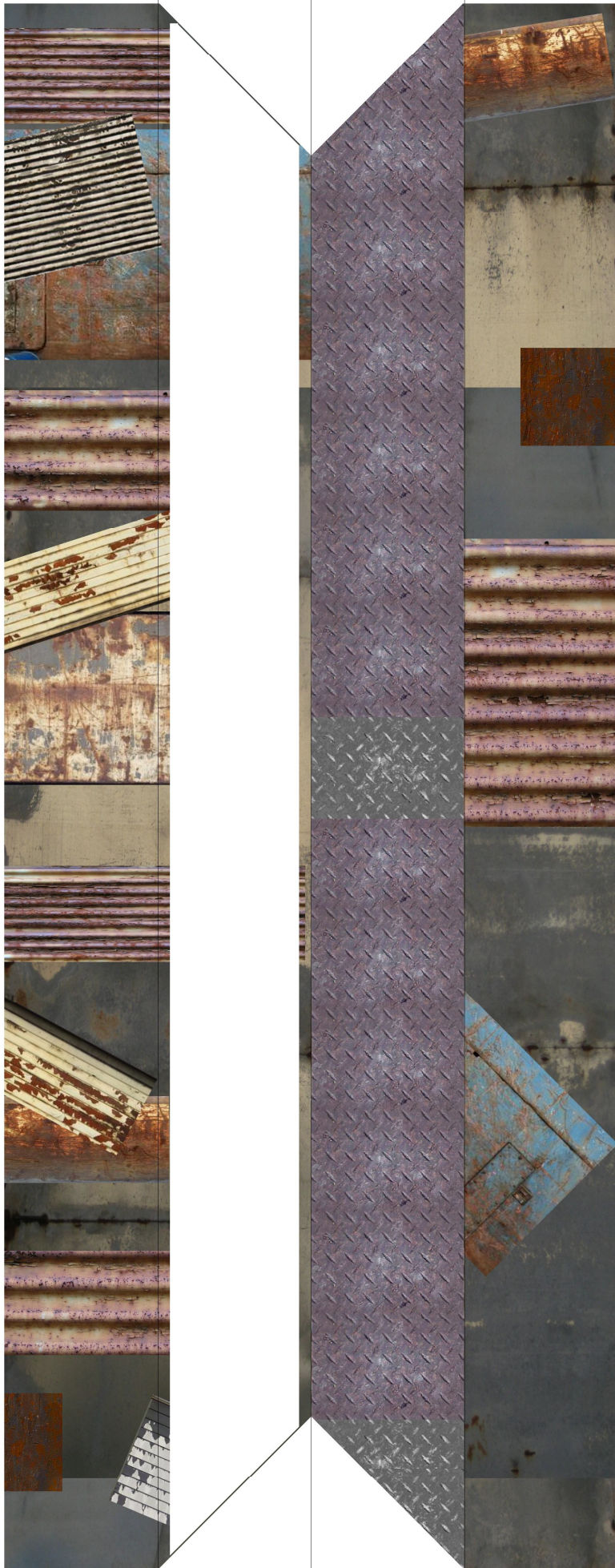
4



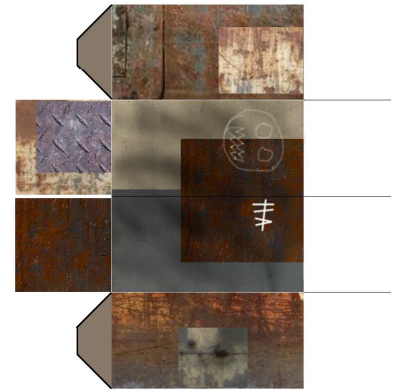
These fold down onto roof flaps

By Tommygun



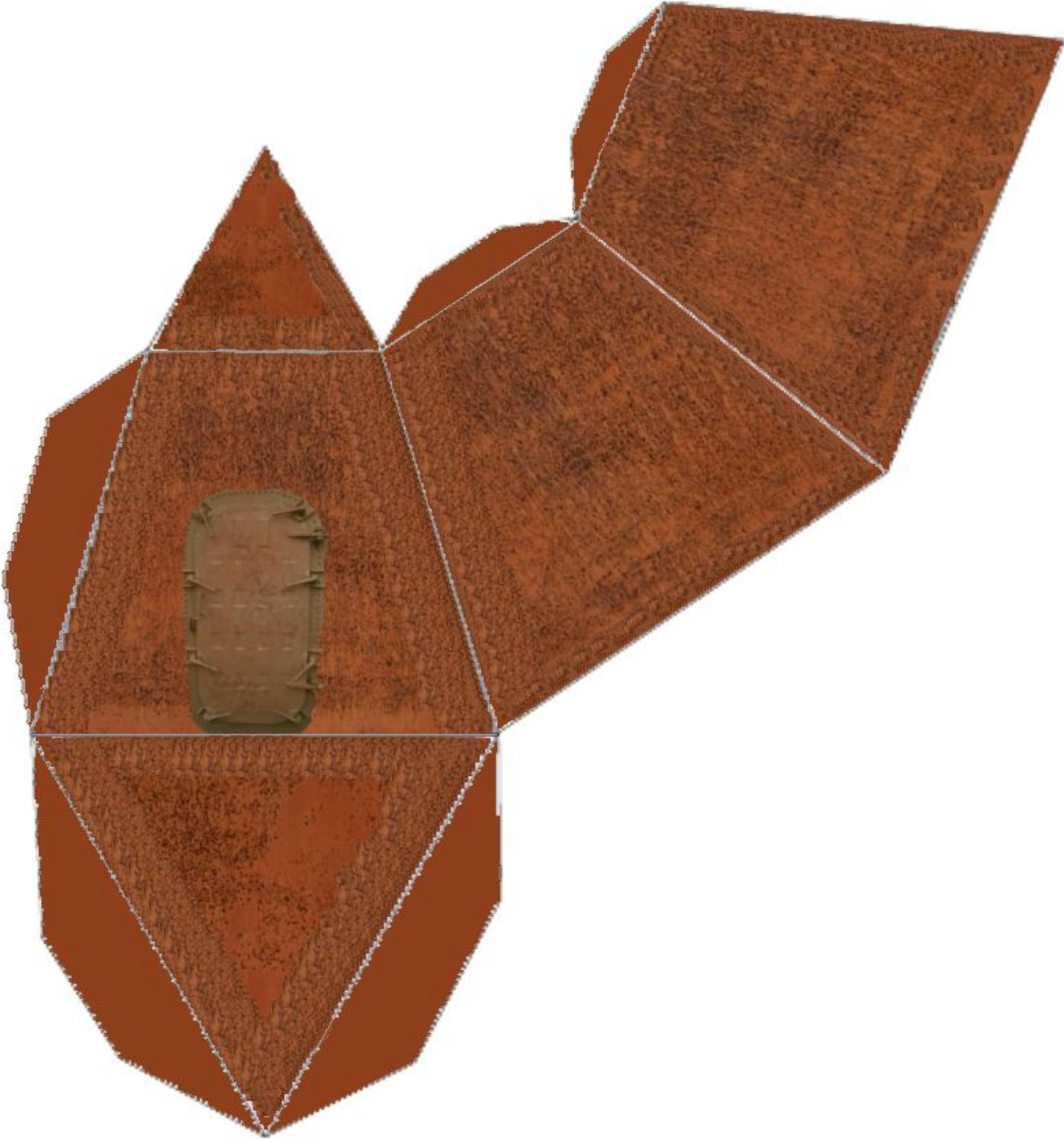


These are inside wall
bracers.
They help keep wall
and floor at a 90
degree angle.



By Tommygun

By Tommygun



Fold each Plate onto it's self. Then Place where wanted.



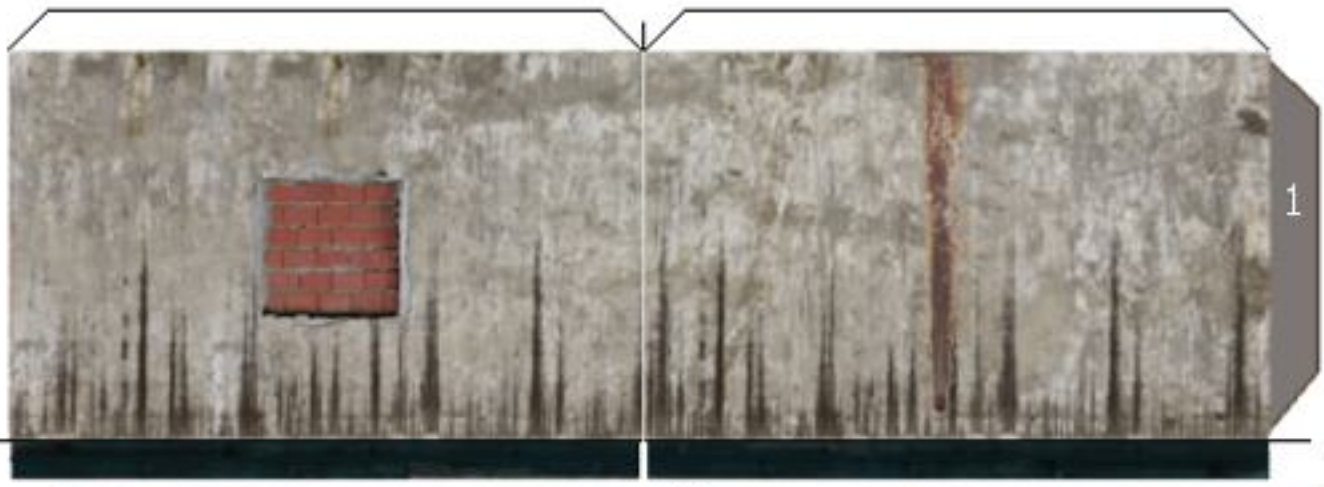
By Tommygun



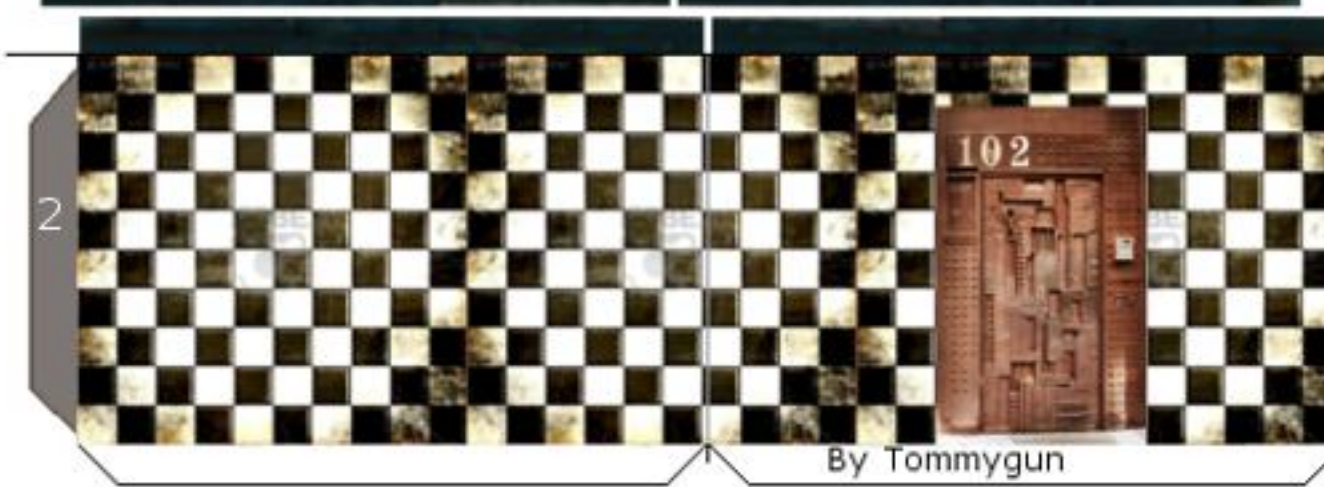
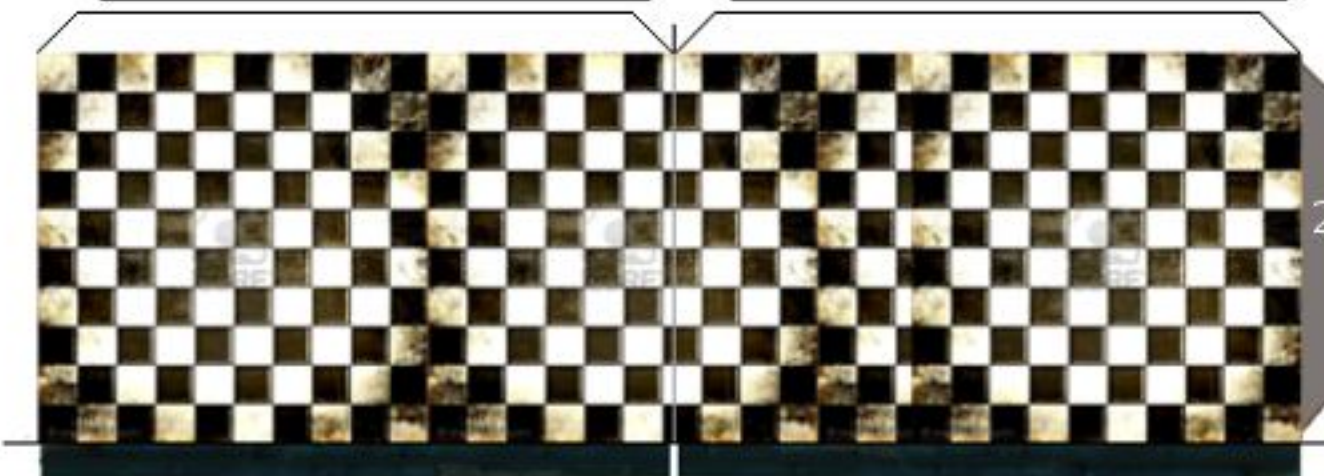
1



2



←
These fold down onto roof flaps



←
These fold down onto roof flaps

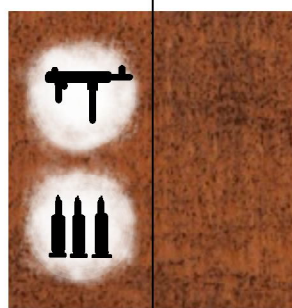
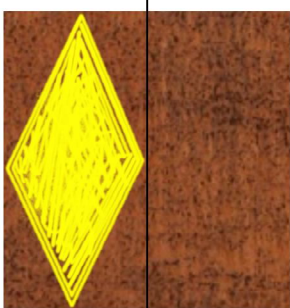
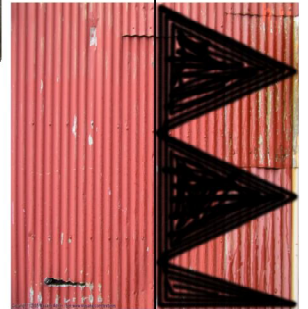
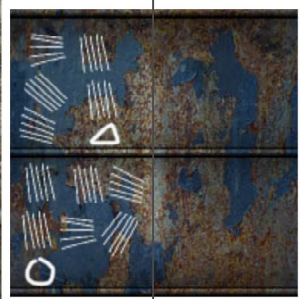
By Tommygun

By Tommygun

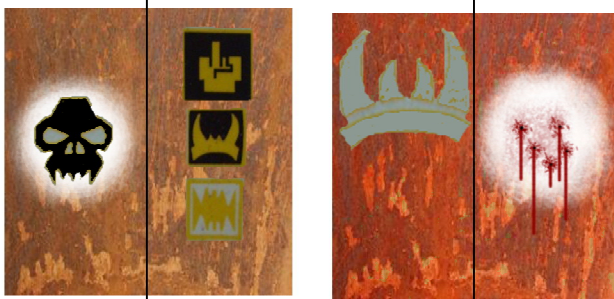
Inside of
Tower



Assemble this first, then add the outside piece.



By Tommygun
Outside of Tower



Optional Items.

