

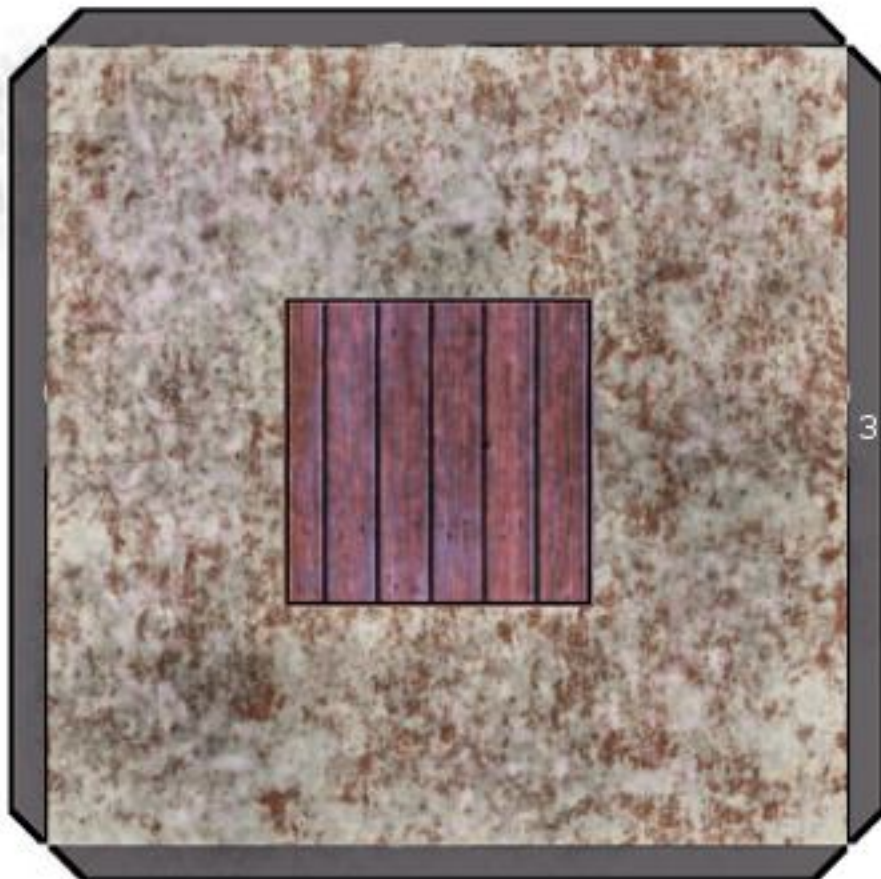
# Roof 1



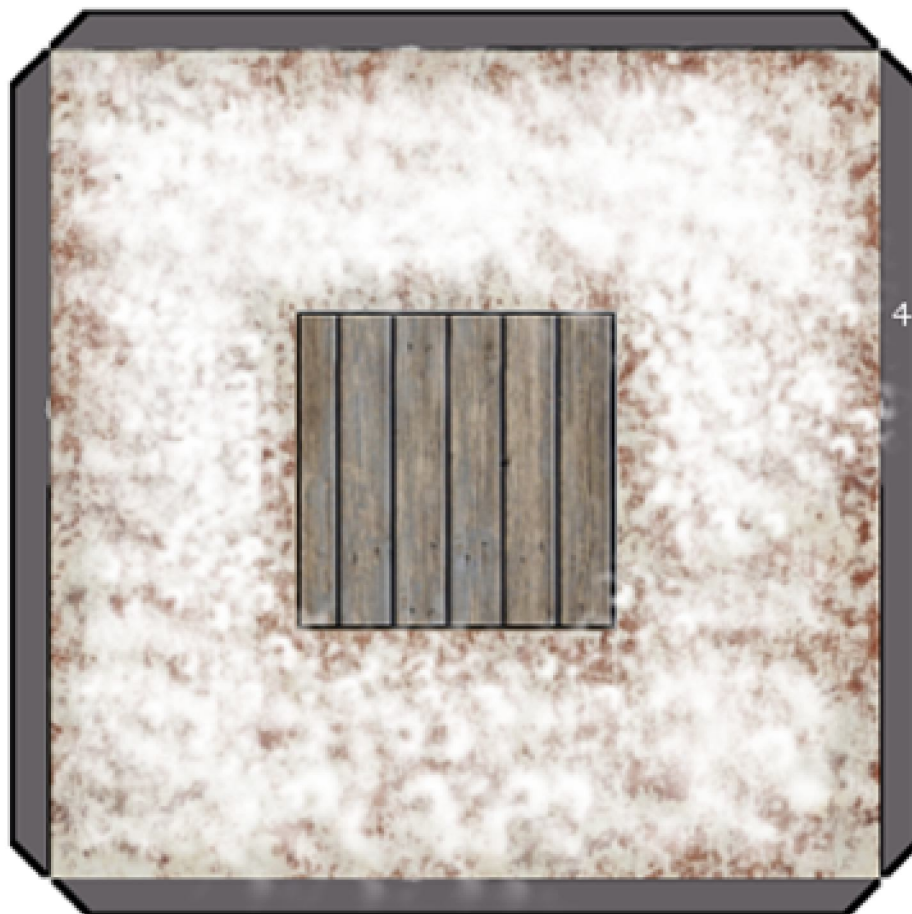
## Roof 2



# Roof 3



# Roof 4





By Tommygun  
Stand for Firing Platform



By Tommygun



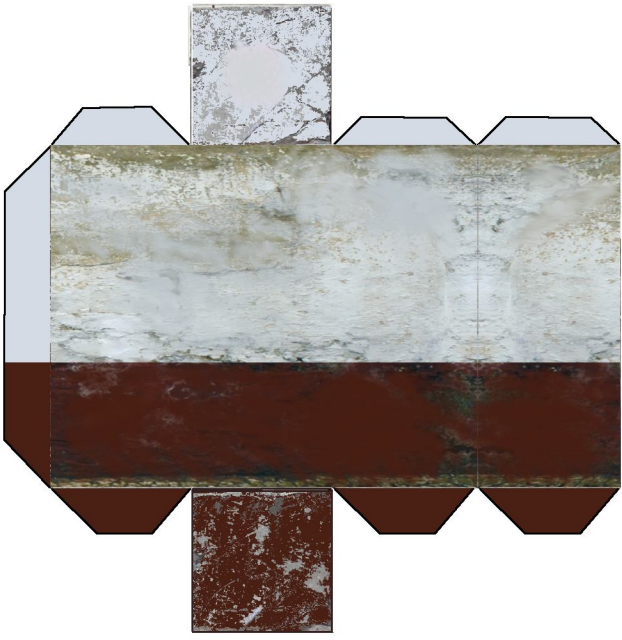


By Tommygun



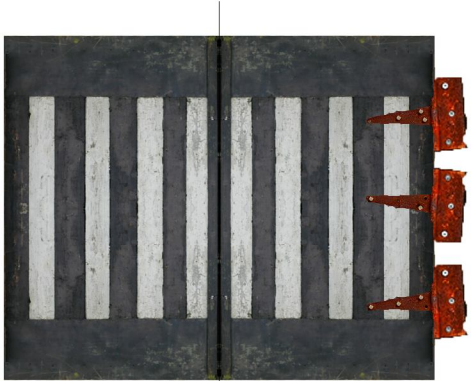


By Tommygun

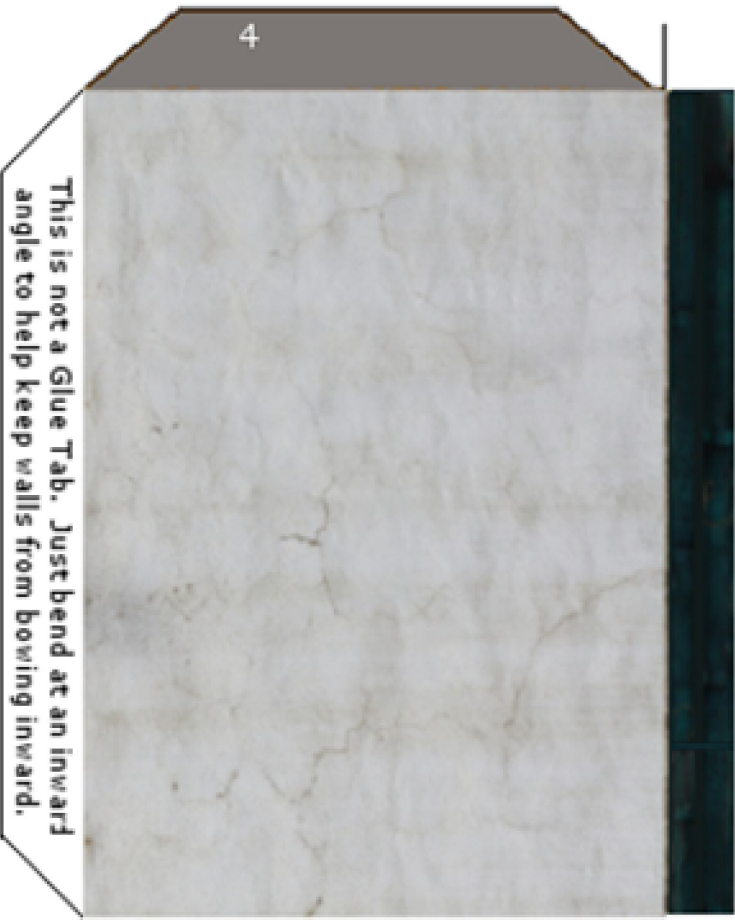




By Tommygun  
Stand for fire platform



# Tower 4



This is not a Glue Tab. Just bend at an inward angle to help keep walls from bowing inward.

These fold down onto roof flaps  
by Tomerqun



This is not a Glue Tab. Just bend at an inward angle to help keep walls from bowing inward.



This is not a Glue Tab. Just bend at an inward angle to help keep walls from bowing inward.

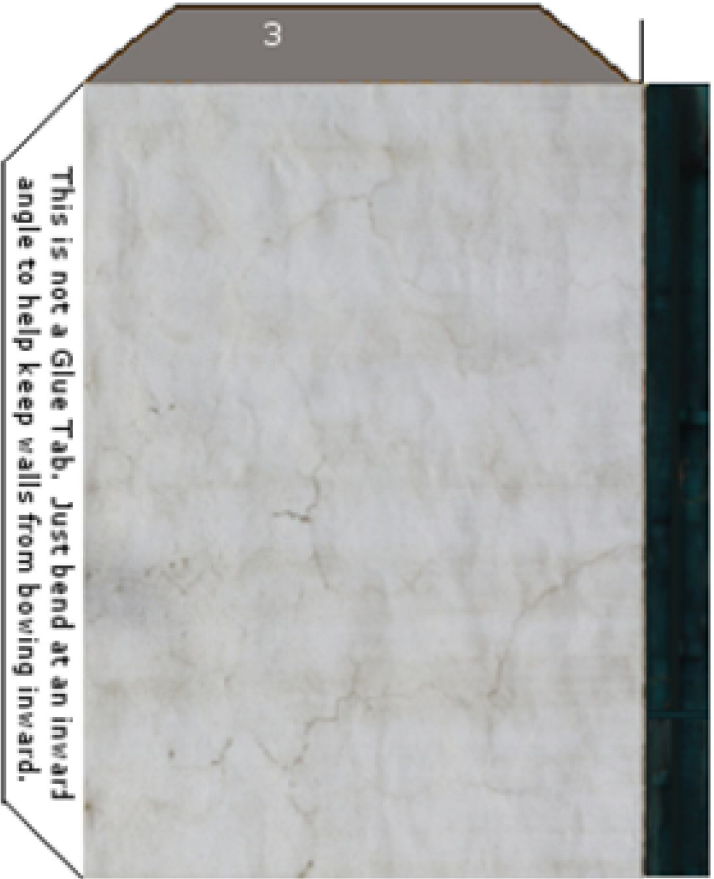


This is not a Glue Tab. Just bend at an inward angle to help keep walls from bowing inward.

4



# Tower 3

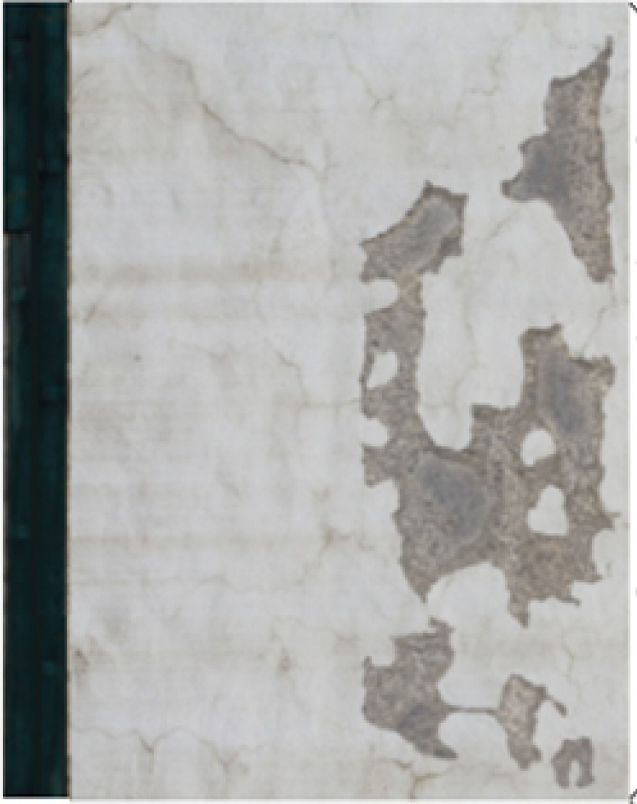


This is not a Glue Tab. Just bend at an inward angle to help keep walls from bowing inward.

These fold down onto roof flaps  
Pr. Torreyana



This is not a Glue Tab. Just bend at an inward angle to help keep walls from bowing inward.



This is not a Glue Tab. Just bend at an inward angle to help keep walls from bowing inward.



This is not a Glue Tab. Just bend at an inward angle to help keep walls from bowing inward.

# Tower 2



2



These fold down onto roof flaps

This is not a Glue Tab. Just bend at an inward angle to help keep walls from bowing inward.

This is not a Glue Tab. Just bend at an inward angle to help keep walls from bowing inward.



This is not a Glue Tab. Just bend at an inward angle to help keep walls from bowing inward.

This is not a Glue Tab. Just bend at an inward angle to help keep walls from bowing inward.

2



# Tower 1

