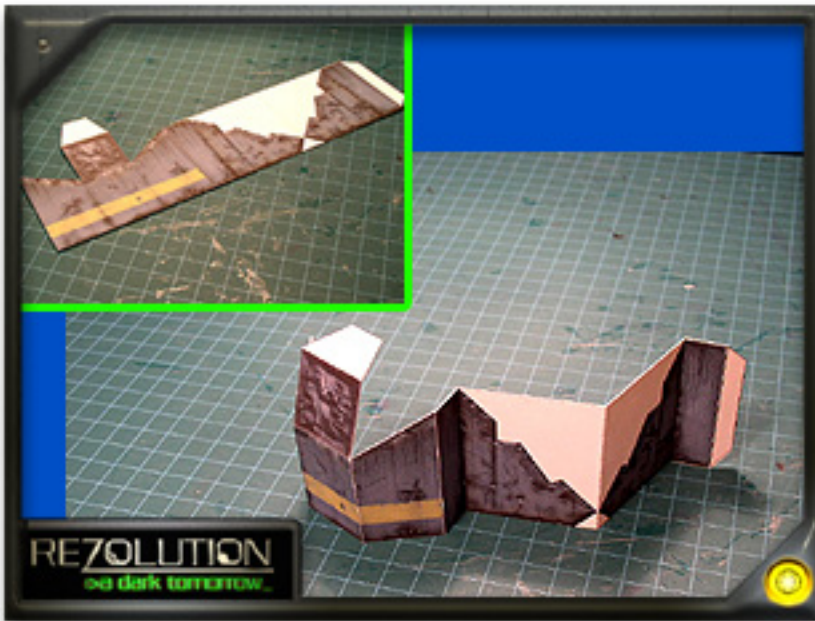


⇒ COM RELAYS, BARRELS & COVER.



RE7OLUTION
⇒ a dark tomorrow_



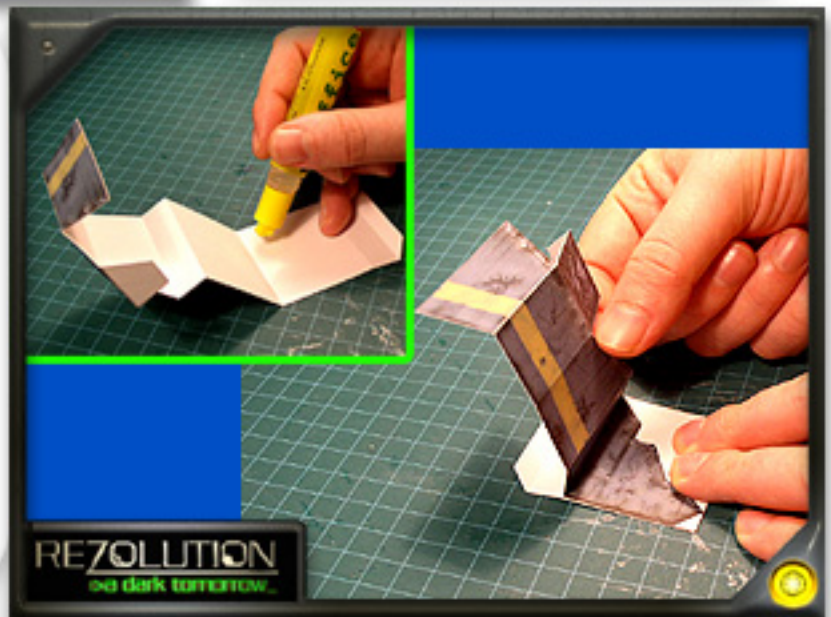


Cut, score and fold this basic cover element as shown.

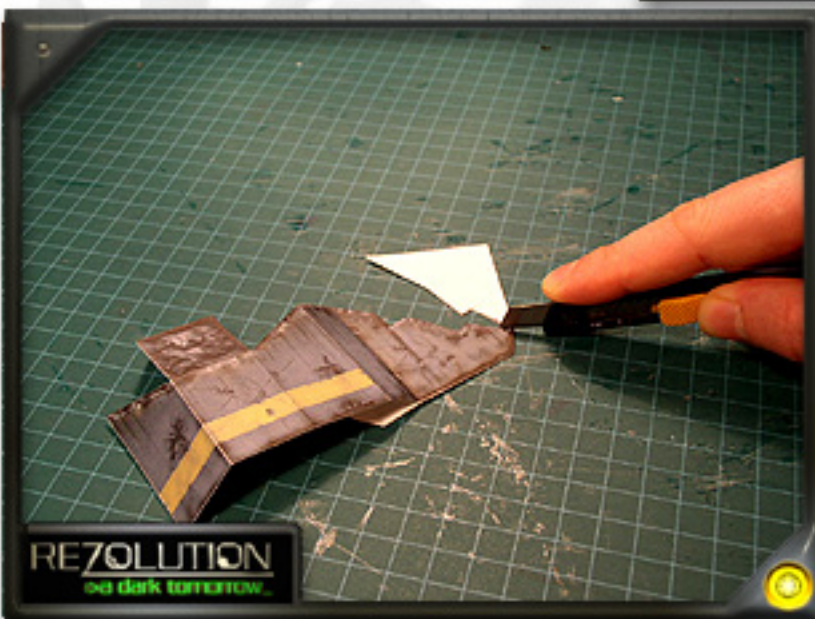
Apply glue to the extended inside wall section as shown (inset).

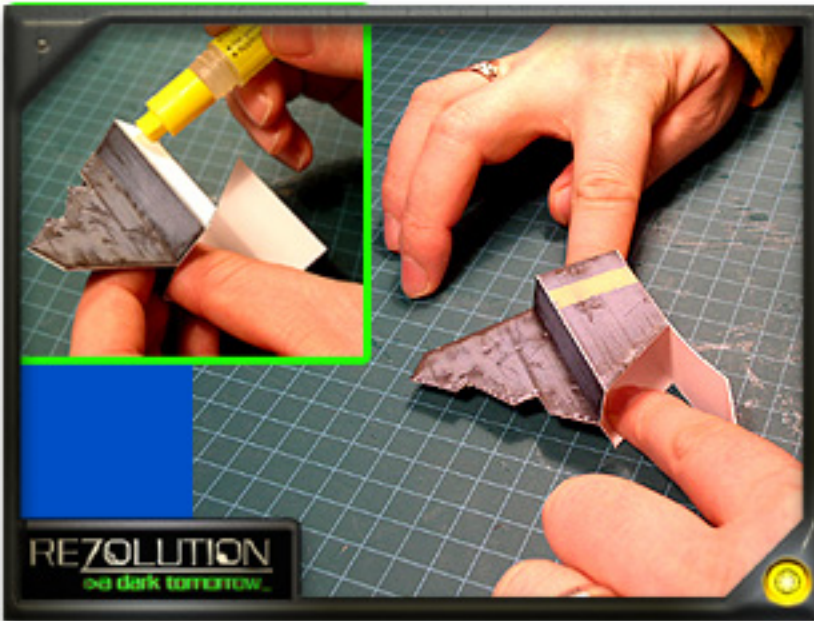
Fold over and burnish (rub) the section removing any air bubbles and ensuring even glue distribution.

I am holding the other end of the model upwards with my right hand to prevent it from sticking to other sections while burnishing.



Once the wall area has had a chance to dry carefully cut away any remaining white space.

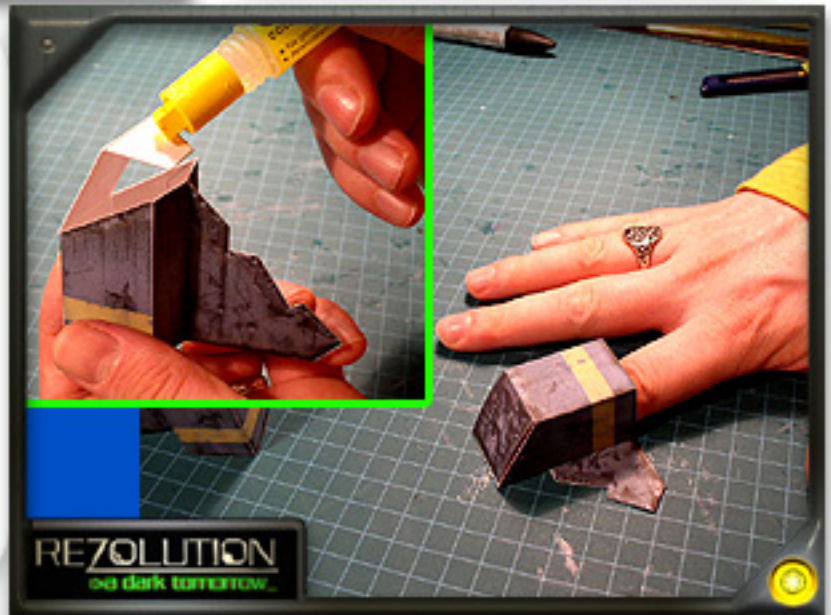




Apply a bead of glue to the long vertical tab as shown. Attach the tab to the opposing wall.

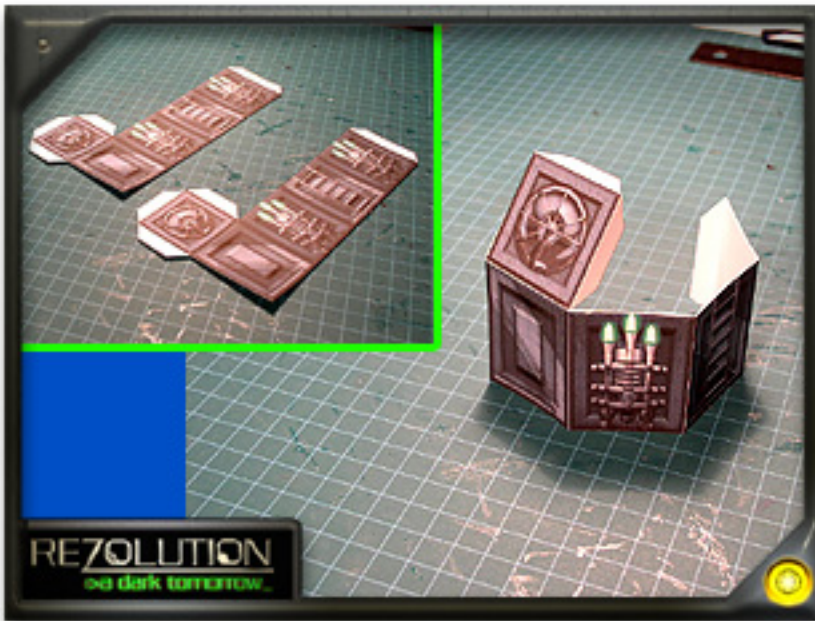
Take note of the hand position here. ALWAYS apply pressure to glue tabs against your work surface.

Apply a bead of glue to the remaining top tab. Insert the tab into the main column. Rotate the model so that you can apply pressure inside the column and against your work surface. (See picture)



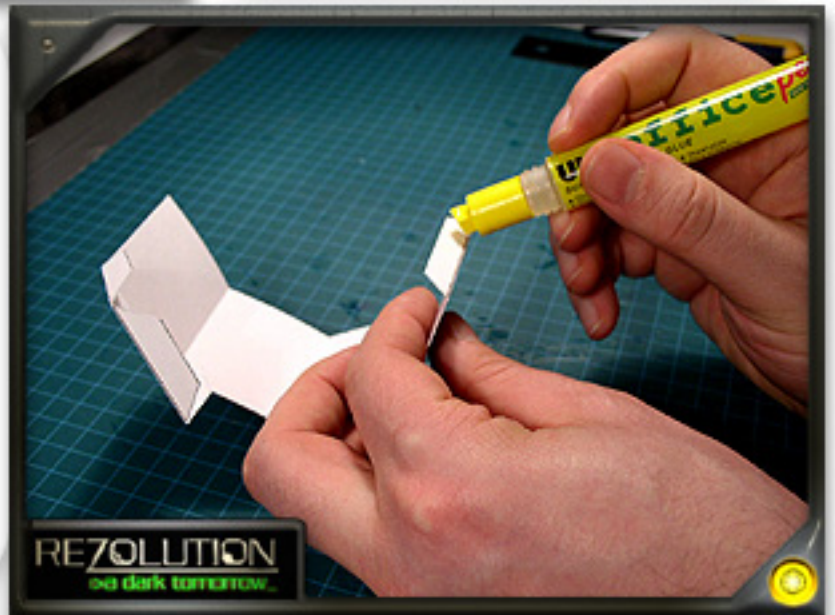
Edge your model with a grey or black felt, removing any visible white fold or cut lines.





Cut, score and fold your Com Relay as shown.

Apply a bead of glue along the vertical tab.



Attach the tab to the opposing wall as shown.

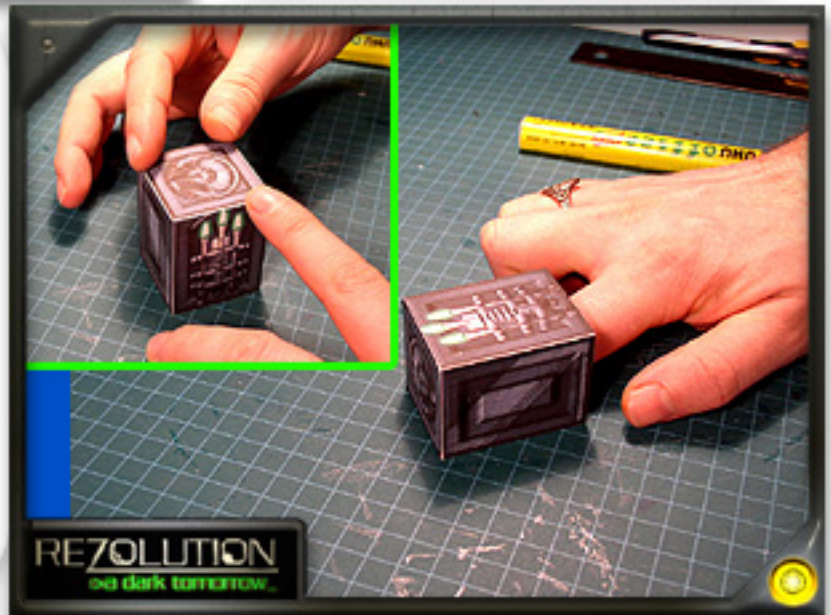




Apply a bead of glue to the remaining 3 glue tabs all at once.

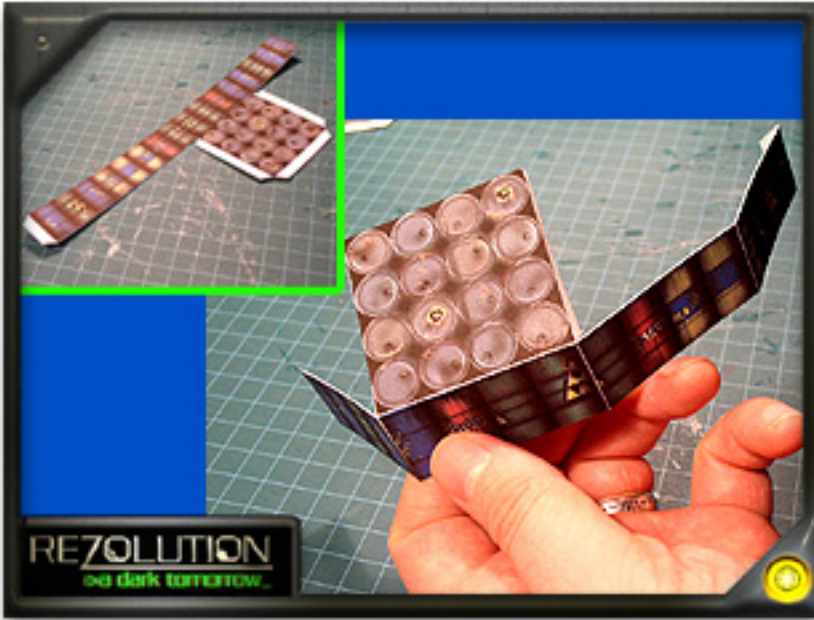
Insert the tabs into the top of the box and apply light pressure to the edge making sure the top is flush (inset).

Lay the model on its side and apply pressure to each tab against your work surface.



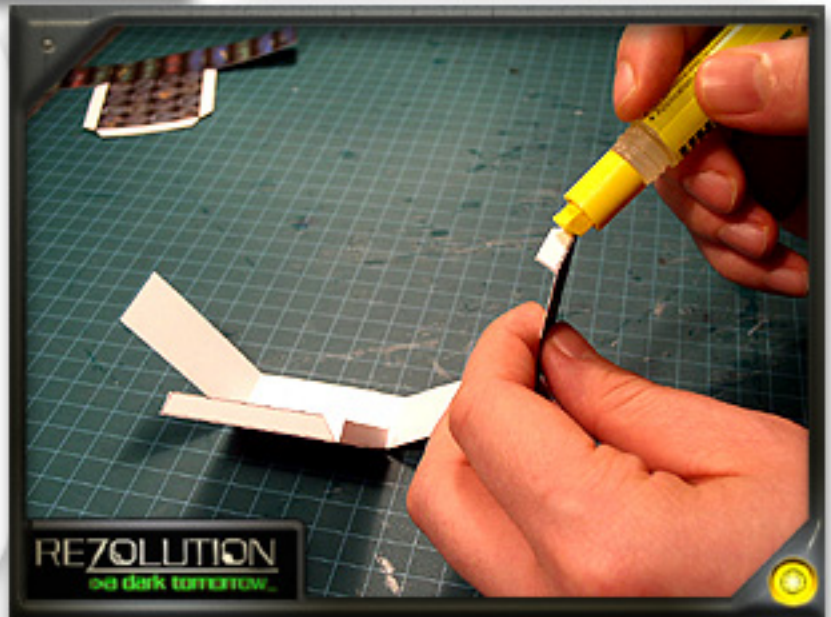
With a black or grey felt edge the remaining visible whitespace.





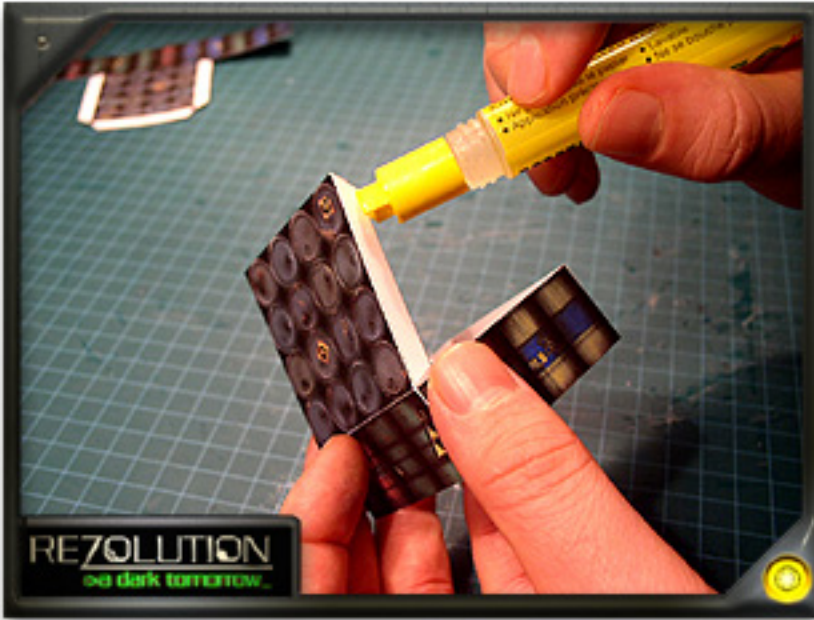
Cut, score and fold your barrel bundle as shown.

Apply a bead of glue to the short glue tab.



Fold over and attach to the opposing wall section as shown.

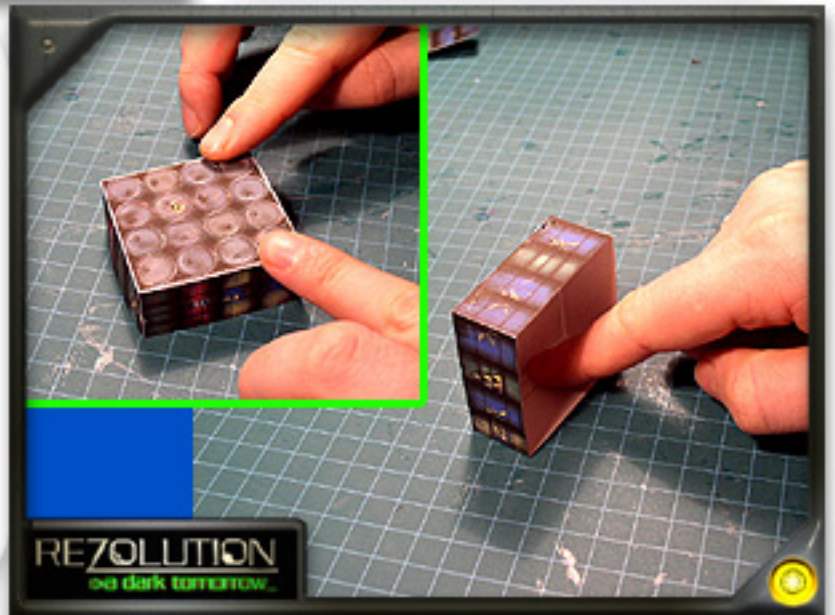




Apply glue to the three remaining tabs.

Insert the three tabs simultaneously being careful to make sure they are level.

Apply pressure to the tabs by placing the model on its side and rotating to each tab.



Edge your barrels with a black or grey felt marker.

ALL DONE!

