

# OBSERVATORY

28MM/30MM SCALE  
CARDSTOCK MODEL FILES

GEOMETRY BY THOMAS WEAVER  
TEXTURES BY DAVE GRAFFAM

## USING THE TEXTURE LAYERS

This model includes PDF files with multiple layers that you can make visible or invisible. To adjust the layers, open up one of the PDFs, then open the Layers menu. Expand the Layers Palette to reveal the selection. Some of the layers will be visible to start off with; most will be invisible. Click on the 'eye' icon to change a layer's visibility.

By choosing different combinations of textures, you can create a unique look for your model. When you're happy with your design, just print it off.

## PRINTING TIPS

These PDF files are set up for the standard 28mm-30mm tabletop wargaming scale, and for US letter-sized (8.5" x 11") sheets. Turn off any 'fit to page' options in your printer driver. If you are printing on A4-sized sheets, you may want to reduce the print size to 95% of the original.

## GLUE AND PAPER TIPS

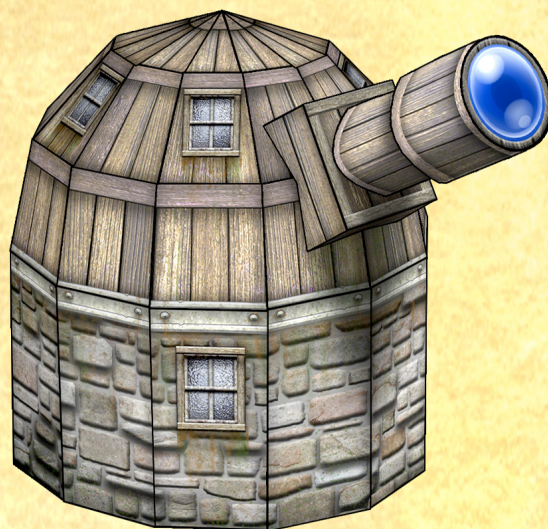
To get the best results, experiment with different papers and glues, and take advantage of whatever printing methods you have available. I prefer laser color copies printed on 80# or 110# (199 gsm) matte cardstock.

The best choice of paper and glue will depend a lot on the printing method that you choose. I use a low-moisture, tacky glue. Small dabs of ordinary white school glue usually does the trick, but for covering large areas I like to use a glue stick.

When applying glue, a thin and even coat is much better than a heavy glob. I cut up excess cardstock into little squares, and keep these handy so that I can spread out glue onto tabs. It's a good idea to keep some slightly-damp tissue if you need to wipe up extra glue, but be careful about this if you're using ink-based prints.

## MODEL ASSEMBLY BASICS

Using scissors or a hobby knife, carefully cut along the outer black lines of each piece. Using a hobby knife, carefully score along each of the remaining lines. (To *score* a line, lightly drag the tip of your hobby knife.) After scoring, lightly fold back along each of these scored lines. Note that some sections may be folded forward instead.



## DIFFERENT SCALES

To print at a smaller scale, use the table below and change your print size percentage.

SCALE	%
28mm	95%
25mm	84%
20mm	65%
18mm (HO)	60%
15mm	50%
12mm	40%
10mm (N)	34%
8mm	27%
(Z)	23%
6mm	20%