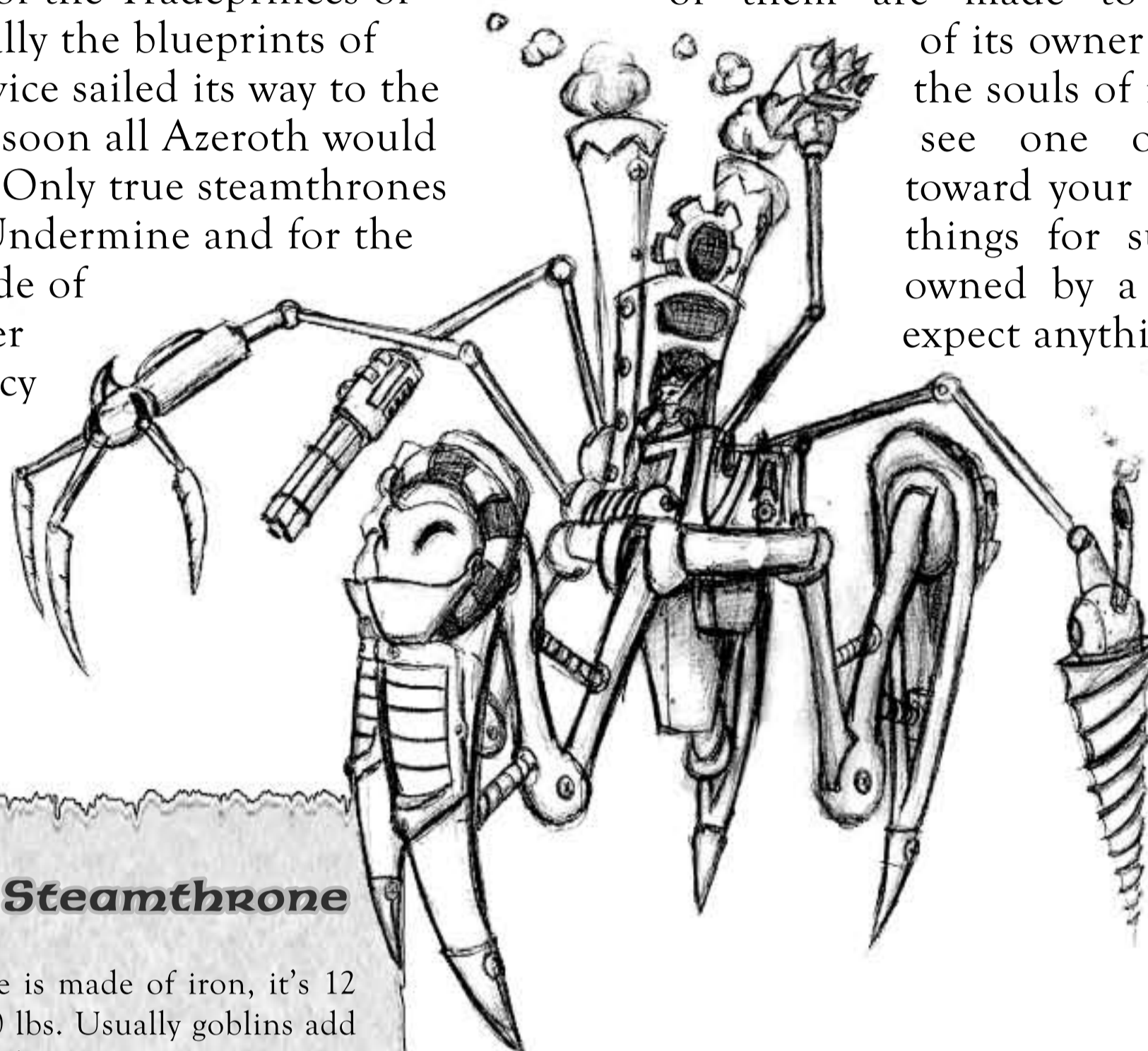


# Steamthrone

Created by the goblin engineer called Gartok, the Steamthrone had the function of serving as personal protection for some of the Tradeprinces of Undermine. Eventually the blueprints of this astonishing device sailed its way to the shores of Booty Bay, soon all Azeroth would have access to them. Only true steamthrones crafted specially in Undermine and for the Tradeprinces are made of adamantine. All other copies have a tendency of exploding or otherwise malfunction in the middle of their

No Steamthrone will look exactly as seen its blueprints, the answer to that is that most of them are made to please the eyes of its owner and to intimidate the souls of its enemies. If you see one of these coming toward your way, it means two things for sure: it's probably owned by a wealthy one and expect anything to be hiding in its dreadful arms.



## Tradeprince Steamthrone

The generic steamthrone is made of iron, it's 12 feet tall and weights 600 lbs. Usually goblins add an extra adamantine layer to reinforce its exoeskeleton. The steamthrone can have a wide array of equipments (described below) that can be added into it. Thrones commonly have 4 different arms and a Phlogiston Strength Booster (+4), though thrones using simpler furnaces can be found.

- Size: Large
- Base Speed: 30 feet
- Hardness: 5 (10 if made of adamantine)
- Hit Points: 100 (300 if made of adamantine)
- Equipment Slots: 5
- Space: 10 feet
- Reach: 10 feet
- Build DC: 30
- Base Cost: 17,000
- Armor: +6
- Max Agi. Bonus: +0
- Check Penalty: -5
- Arcane Spell Failure: 50%
- TS: 6

The armor also provides the user a +10 enhancement bonus to Strength, -4 to Stealth checks and can deal 1d8 point of damage (plus the operator's Strength modifier) with a slam attack when swinging any of the thrones' arms.

Table 1-1: Steamthrone Add-ons

Name	Slots	Craft/Use DC	Damage	Range	Ammo	MR	TS Modifier	Cost*
Steam saw	1	14/—	4d6	—	—	1	+1	360
Dragon Gun	1	25/15	3d10	30 ft	20	2	+1	4,000
Umbrella	1	10/10	—	—	—	1	+0	50
Hand/Tea Pot	1	15/10	Slam	—	—	1	+0	50
Gatling Gun	1	20/—	4d8	100 ft	10	2	+1	3,000

These are only a few examples of what can be done with the Steamthrone, any weapons can be added just as per the rules found on page 204 of the *World of Warcraft RPG* and page 175 of the *More Magic and Mayhem* books. All weapons are large.

\*multiply this number by 3 to get the market value cost.



Steam Generator