

ARMSCOR MODEL 96-12 AND 96-6 GRENADE LAUNCHER

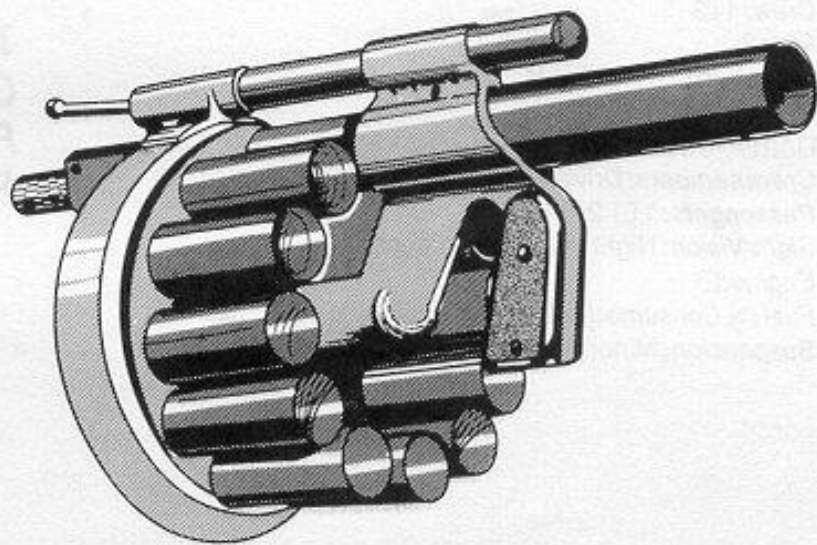
The Armscor Model 96 is a 6/12 shot 40mm grenade launcher, made in South Africa and sold commercially. It is essentially a licensed version of the MM1 grenade launcher, using a six or twelve-shot revolving shell cylinder. It can use any 40mm grenade launcher shell except the high-velocity rounds used in the Mk-19.

Wt: 5.5 kg 6 shot, 7.5 kgs 12-shot

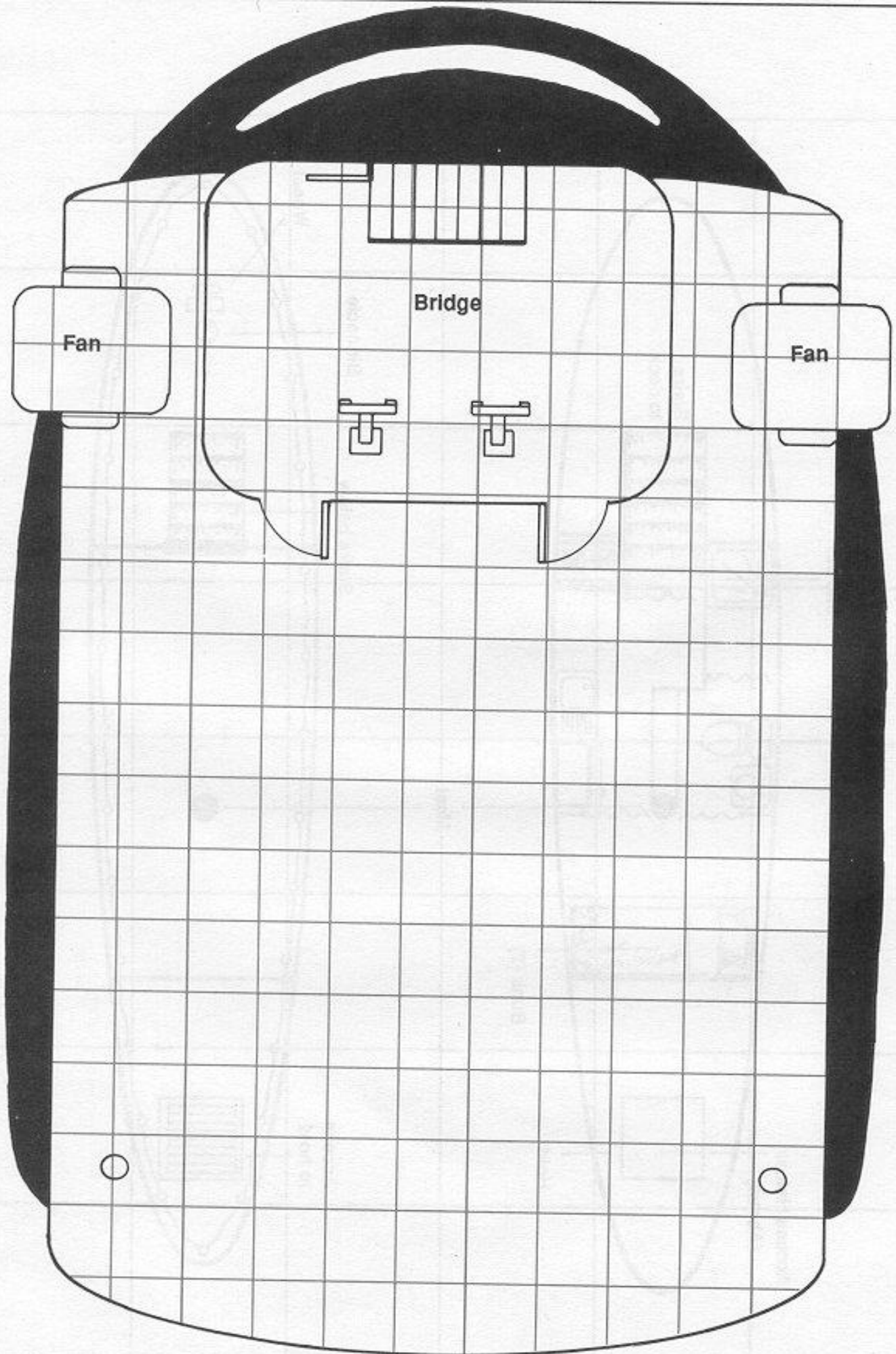
Mag: 6/12

Twilight: 2000 Weapon Price: \$750 (R/—) (both types)

Merc: 2000 Weapon Price: \$600 (—/R) (both types)



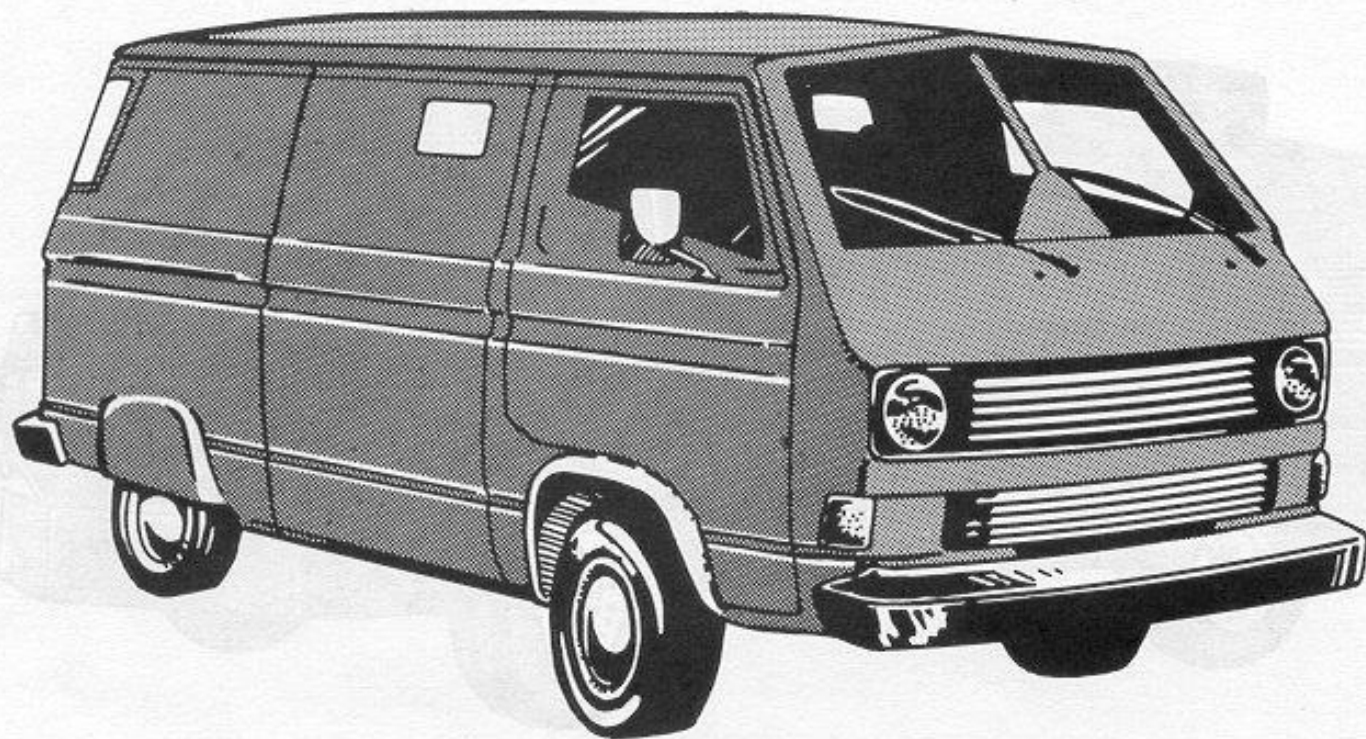
Type	ROF	Mag	Rng	IFR	Rnd	Damage	Pen
Armscor	5	6/12	100	400	HE	C: 3, B: 12	Nil
					HEDP	C: 3, B: 12	4C
					CHEM	C: 1, B: 4	Nil
					ILLUM	B: 100 Nil	



Square= 2 meters

Bridge Deck of Hovercraft

Commercial Van



Price: \$35,000 (V/V)
Fuel Type: G, A
Load: 1 ton
Veh Wt: 2.5 tons
Crew: 1+5
Mnt: 4
Night Vision: Headlights

Damage Record

Crewmembers: Driver
Passengers: 1 2 3 4 5
Sight/Vision: Gun sight Range finder Night vision equipment
Engine:
Fuel (% Consumed or Destroyed):
Suspension: Minor damage Immobilized

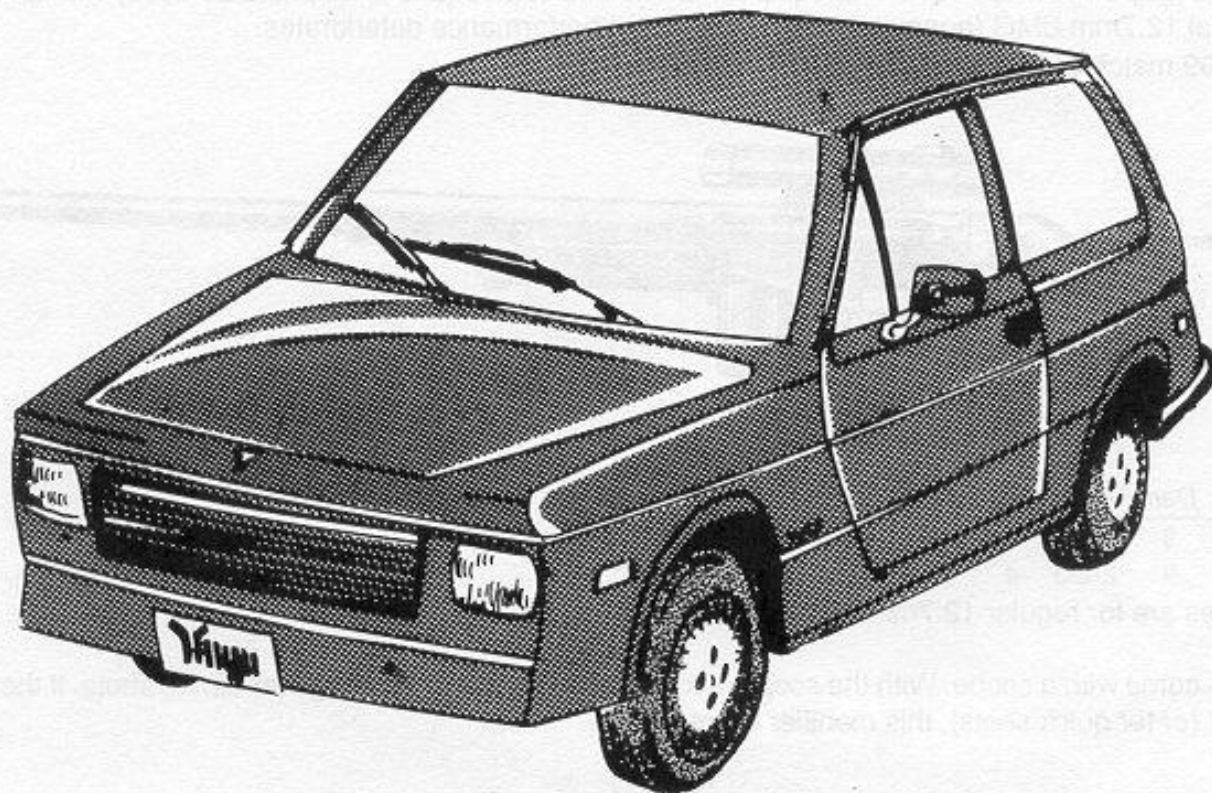
Commercial Van (Unarmored Cargo Vehicle): Businesses the world over use panel vans and similar delivery and cargo vehicles. Because of their cargo capacity and ubiquity, espionage and police organizations like them, too.

***Tr Move:* 160/30**
***Com Move:* 45/8**
***Fuel Cap:* 120**
***Fuel Cons:* 32**

Combat Statistics

Config: Std HF: 1
Susp: W (2) HS: 1
HR: 1

Compact Car



Price: \$10,000 (V/V)

Fuel Type: G, A

Load: 250 kg

Veh Wt: 1 ton

Crew: 1+3

Mnt: 2

Night Vision: Headlights

Damage Record

Crewmembers: Driver

Passengers: 1 2 3

Sight/Vision: Night vision equipment

Engine:

Fuel (% Consumed or Destroyed):

Suspension: Minor damage Immobilized

Compact Car (Unarmored Cargo Vehicle): Representative of a number of small cars, the most common automobiles on the world's roadways. While these differ in appearance, their overall performance is similar enough to be represented by one example.

Tr Move: 190/30

Com Move: 50/8

Fuel Cap: 80

Fuel Cons: 20

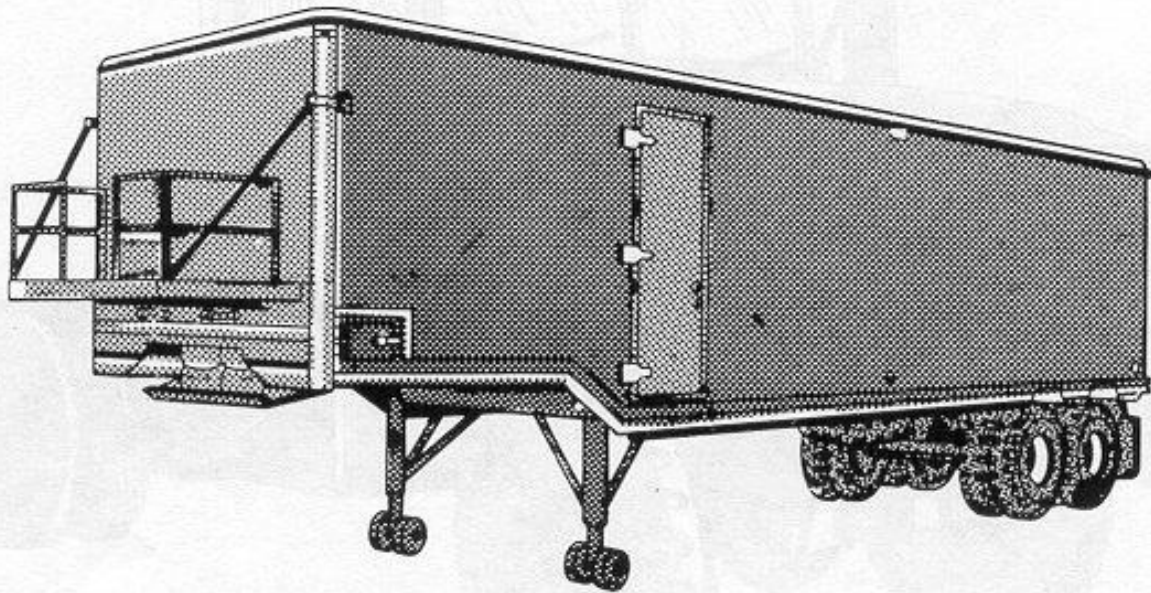
Combat Statistics

Config: Stnd HF: 1

Susp: W (2) HS: 1

HR: 1

Enclosed Trailer



Price: \$25,000 (C/C)

Load: 20 ton

Veh Wt: 12 tons

Mnt: 4

Damage Record

Suspension: Minor damage Immobilized

Enclosed Trailer (Unarmored Cargo Vehicle): A fully enclosed or open flatbed trailer may be towed behind the semi-trailer tractor. The enclosed version can handle cargos that can be loaded on through the rear doors (some have a side door); the flatbed can handle any cargo that can fit on and be secured to the bed. Some of the enclosed versions have integral temperature control. Movement is per towing vehicle.

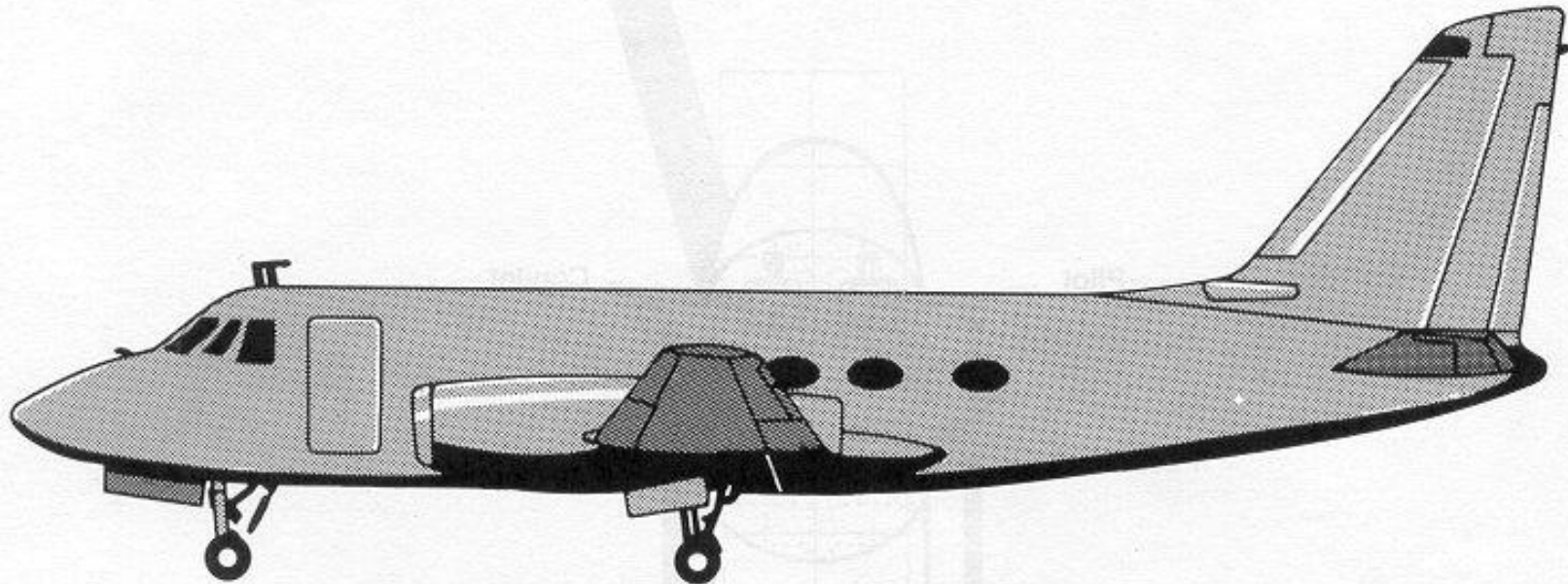
Combat Statistics

Config: Std HF: 1

Susp: W (2) HS: 1

HR: 1

Large Executive Jet



Merc: 2000 Price: \$3,250,000 (R/S)
Twilight: 2000 Price: \$7,800,000 (—/R)
Armament: No fixed armament
Fuel Type: AvG
Load: 1 ton
Veh Wt: 14 tons
Crew: 3+7
Mnt: 10
Runway Type: Hardened
Min. Runway, Takeoff/Land: 500/600 m

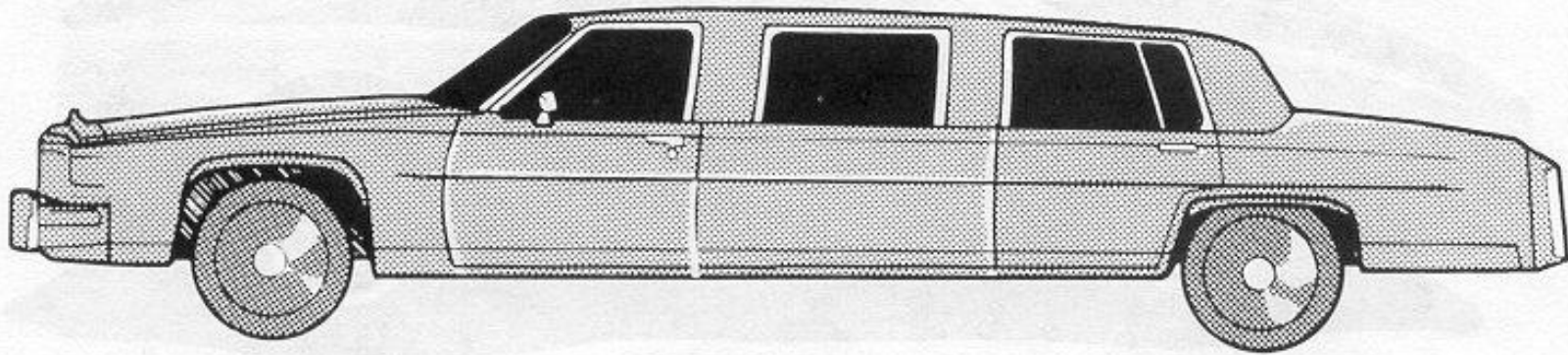
Large Executive Jet (Fixed-Wing Aircraft): Higher-level executives and government officials make use of slightly more luxurious aircraft for their travels. After all, what's the use of having rank if it has no privileges?

***Tr Move:* 4400**
***Com Move:* 85 (15)**
***Fuel Cap:* 8400**
***Fuel Cons:* 6700**

Damage Record

Crewmembers: Pilot Copilot Flight attendant
Passengers: 1 2 3 4 5 6 7
Sight/Vision: Radar
Radio:
Engine: 1 2
Fuel (% Consumed or Destroyed):
Wings: Damaged Destroyed
Rotor: Damaged Destroyed

Limousine



Price: \$75,000 (C/V)
Fuel Type: G, D, A
Load: 750 kg
Veh Wt: 2.5 tons
Crew: 1+6
Mnt: 4
Night Vision: Headlights

Damage Record

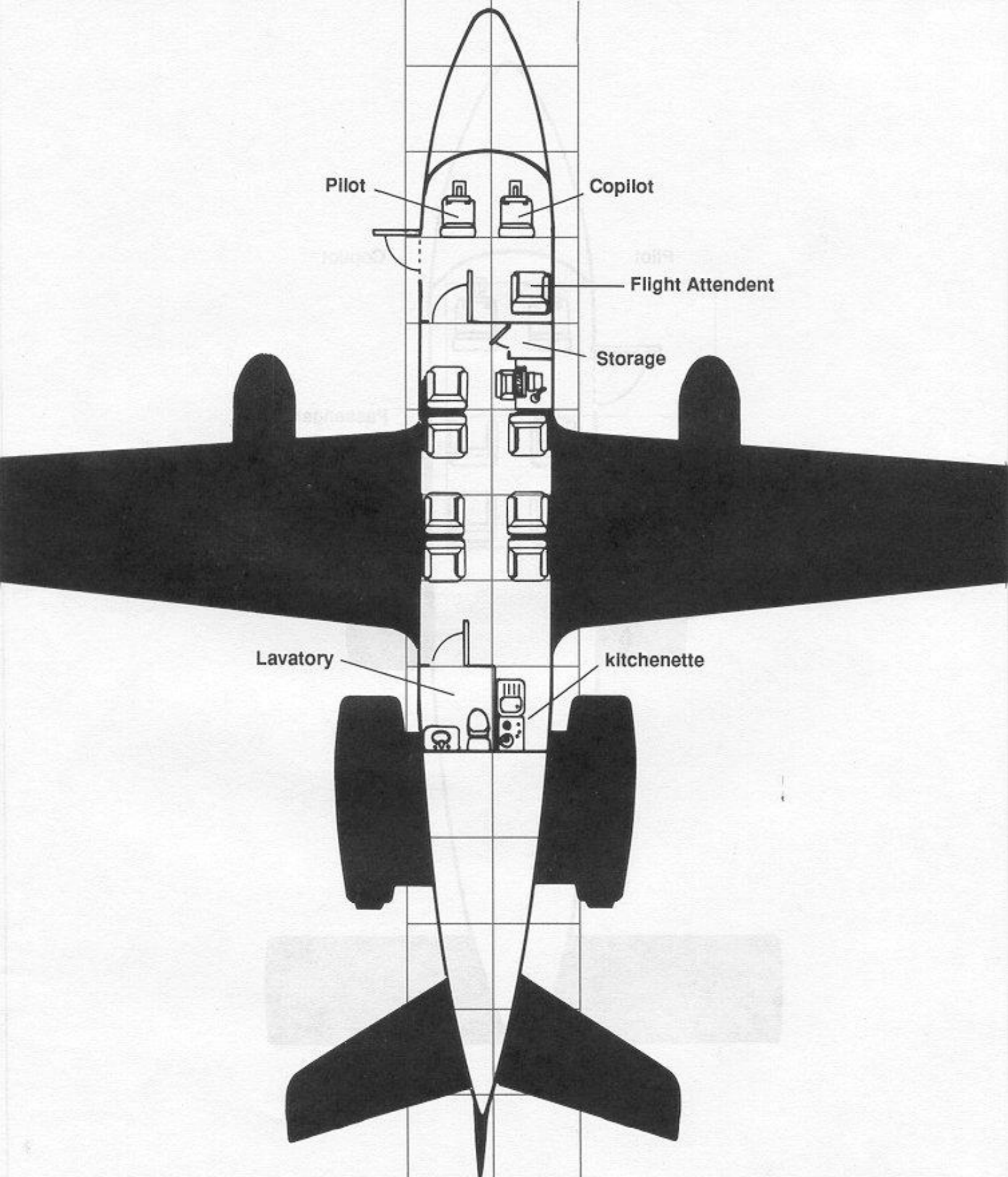
Crewmembers: Driver
Passengers: 1 2 3 4 5 6
Sight/Vision: Night vision equipment
Engine:
Fuel (% Consumed or Destroyed):
Suspension: Minor damage Immobilized

Limousine (Unarmored Cargo Vehicle): Most wealthy executives would much rather use one of these than a normal car. And they can afford it. The second armor listing is for the armored version, which costs \$25,000 more and is (S/C).

***Tr Move:* 160/30**
***Com Move:* 45/6**
***Fuel Cap:* 150**
***Fuel Cons:* 24**

Combat Statistics

Config: Stnd HF: 1 (3)
Susp: W (3) HS: 1 (3)
HR: 1 (3)



Pilot

Copilot

Flight Attendant

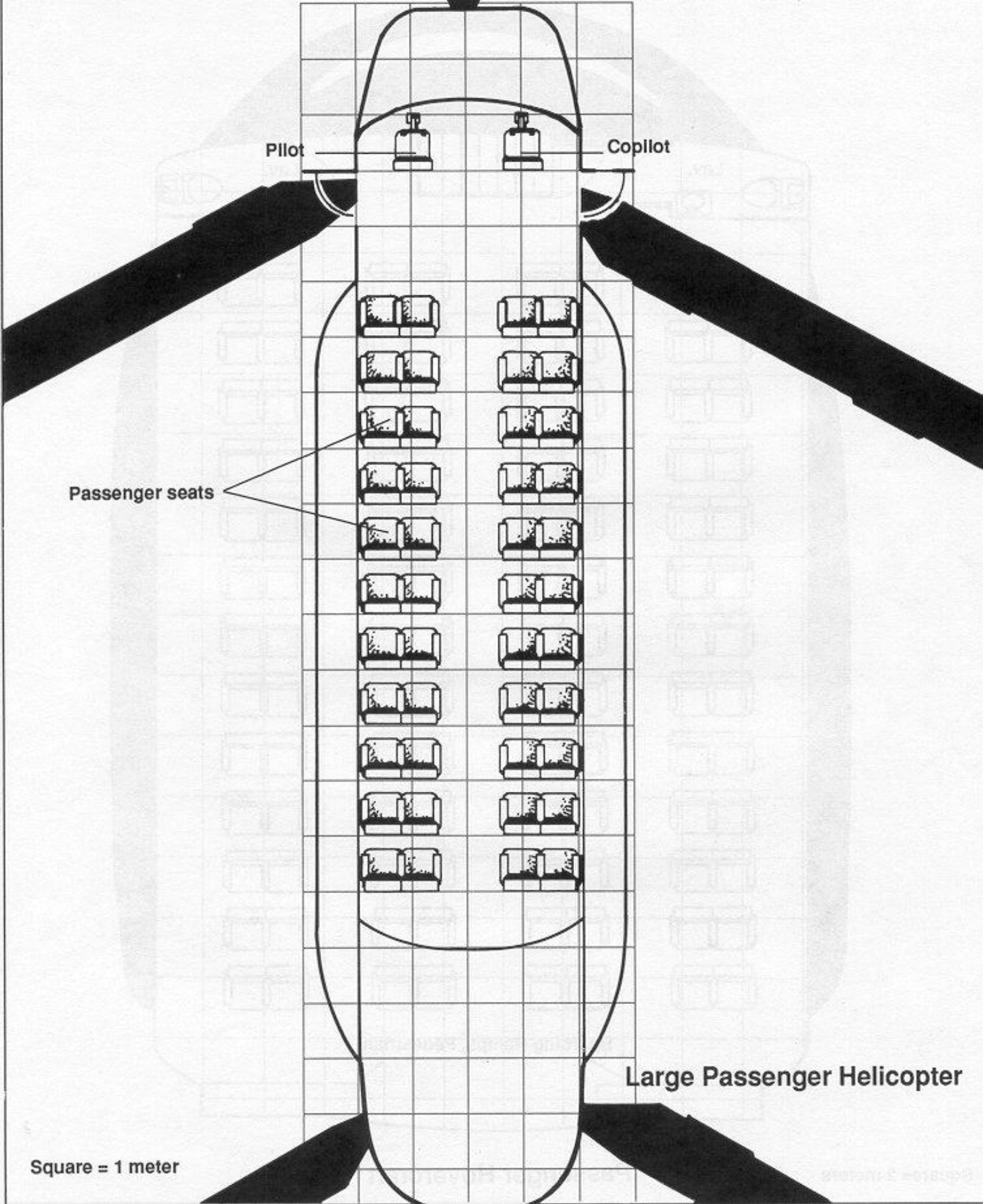
Storage

Lavatory

kitchenette

Square = 2 meters

Large Plane



Pilot

Copilot

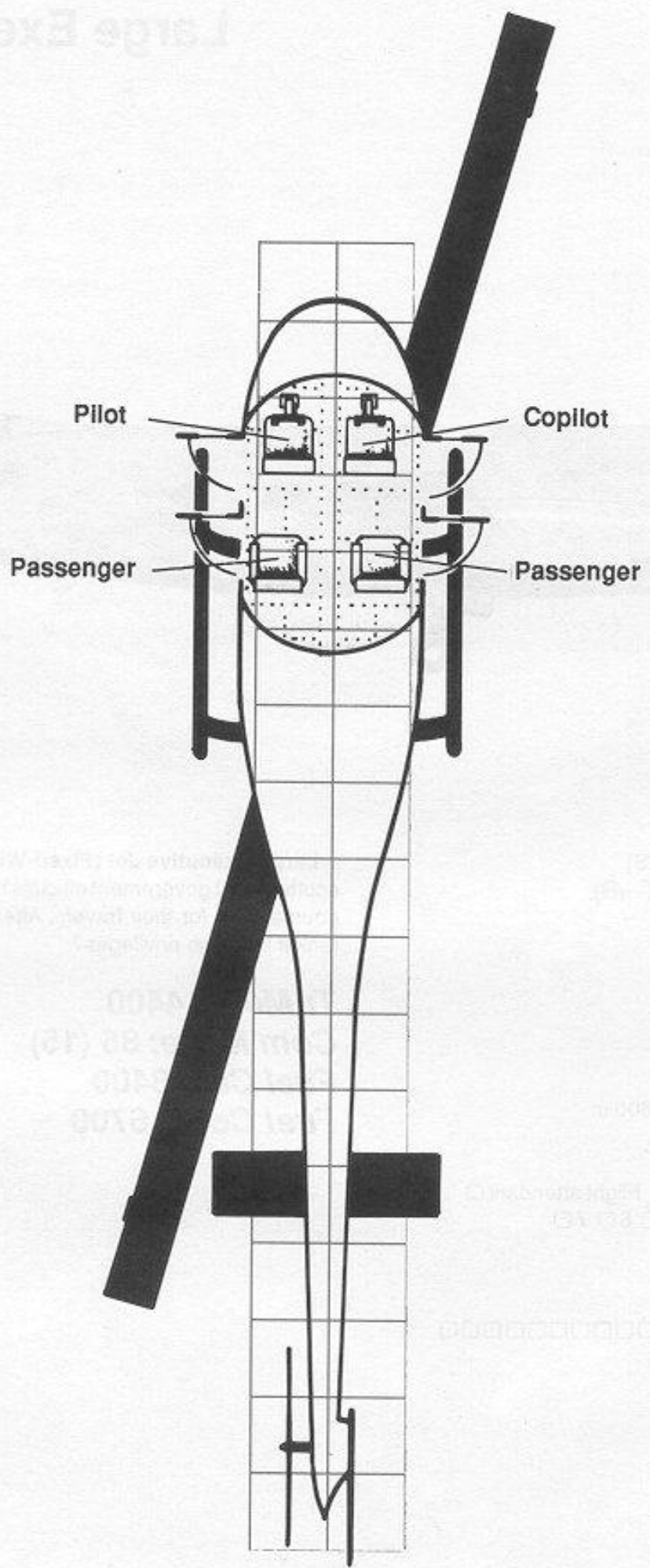
Passenger seats

Large Passenger Helicopter

Square = 1 meter

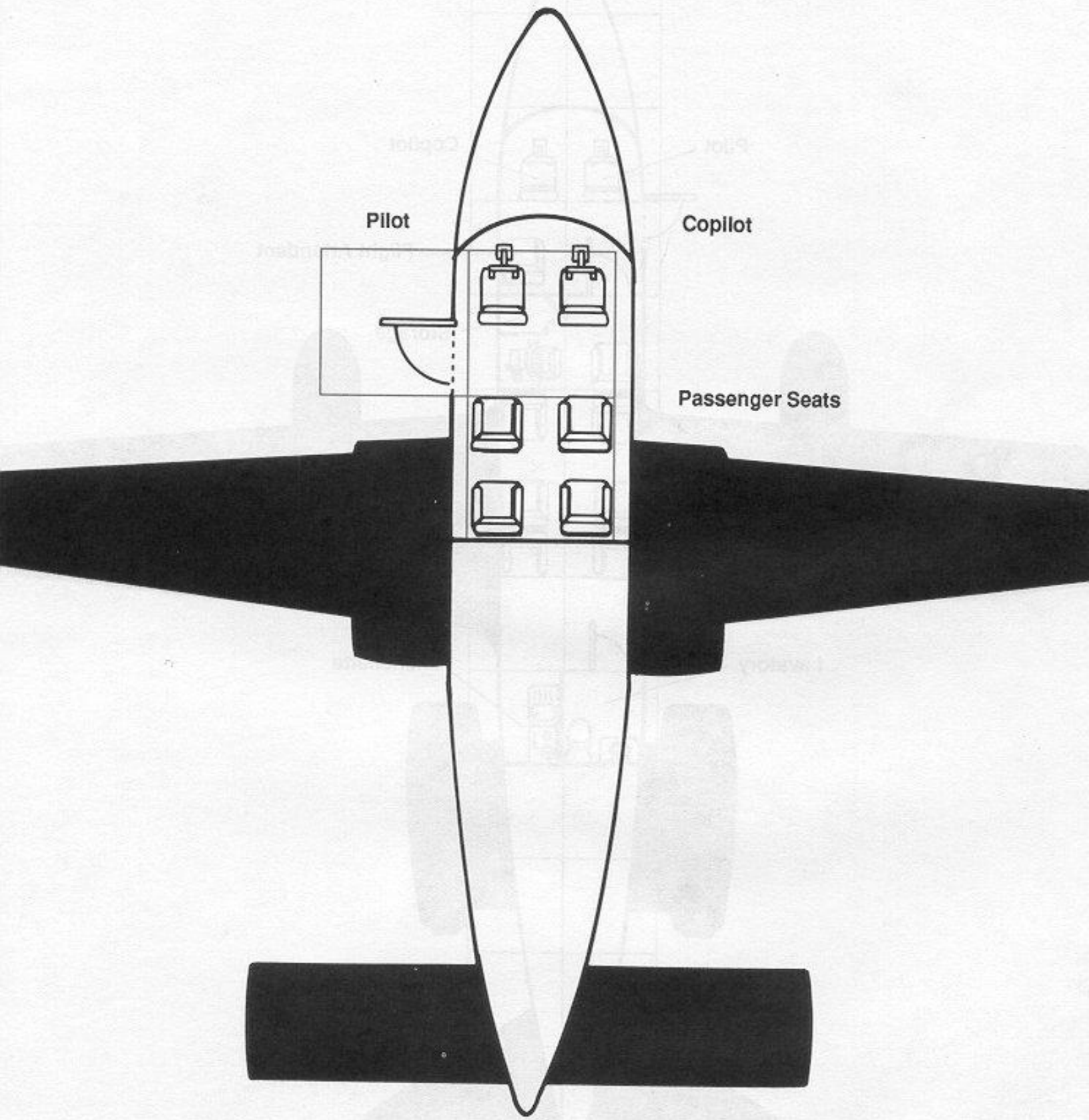
© 1995 Boeing

Large Executive Jet



Square = 1 meter

Small Helicopter



Pilot

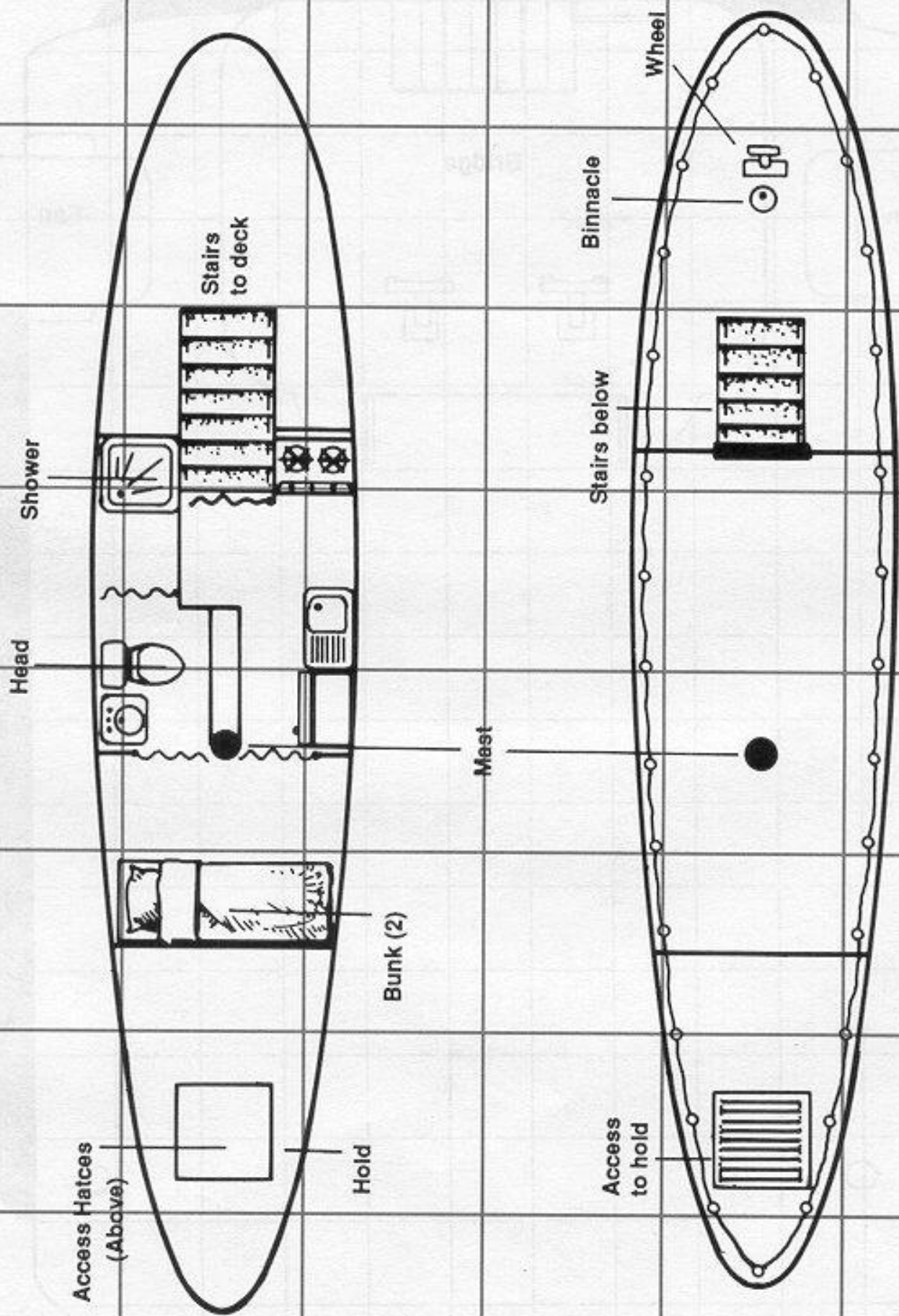
Copilot

Passenger Seats

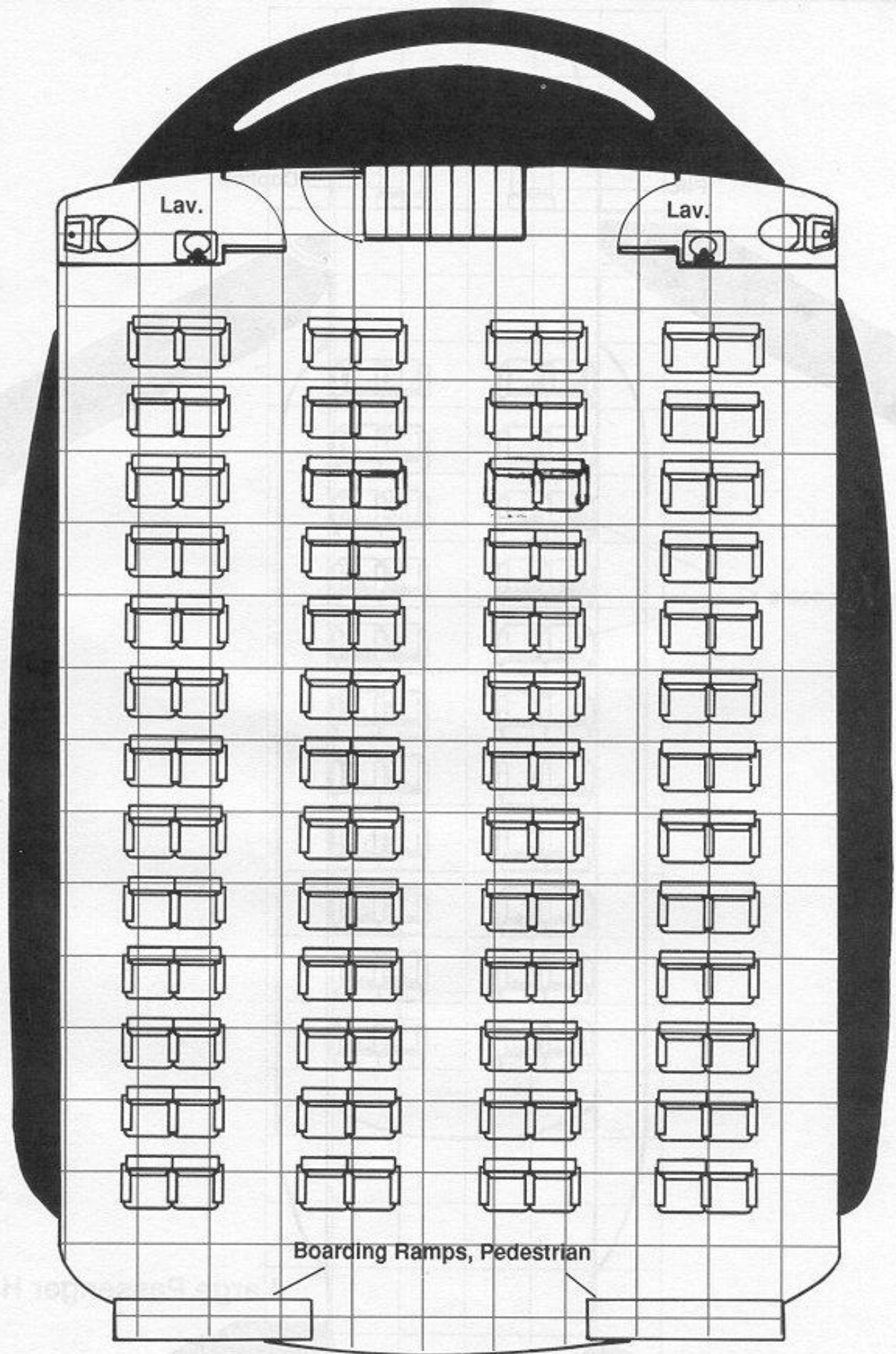
Square = 2 meters

Small Plane

©1987 S. S. S. S.



Small Sailboat



Lav.

Lav.

Boarding Ramps, Pedestrian

Square= 2 meters

Passenger Hovercraft

RAI MODEL 500 SNIPER RIFLE

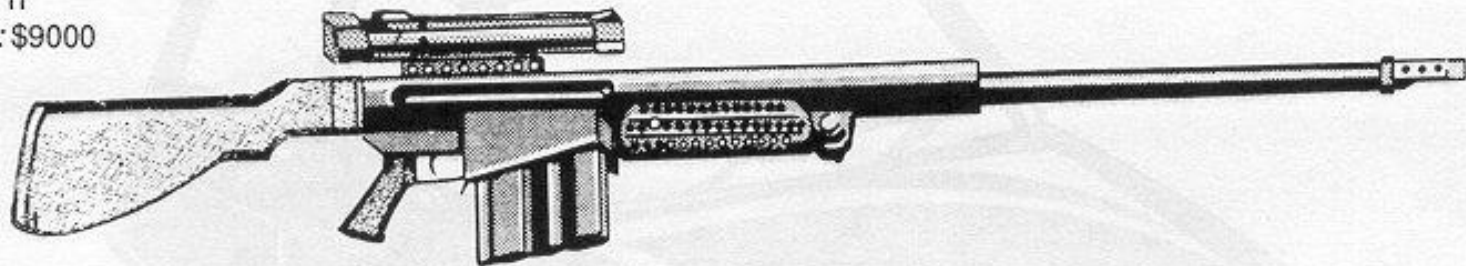
A special, long-ranged, .50-caliber sniper rifle, using 12.7mm BMG match ammunition. Weapons like this are the arms of choice for USMC and US Navy SEAL snipers. The weapon is built for a particular user and fitted to individual physical parameters. An 8-24 power scope is normal equipment. The rifle comes (and is meant to be used) with an integral bipod. It can use normal 12.7mm BMG (nonmatch) ammunition, but performance deteriorates.

Ammo: 12.7×99 match or BMG 50

Wt: 15 kg

Mag: 1i

Price: \$9000

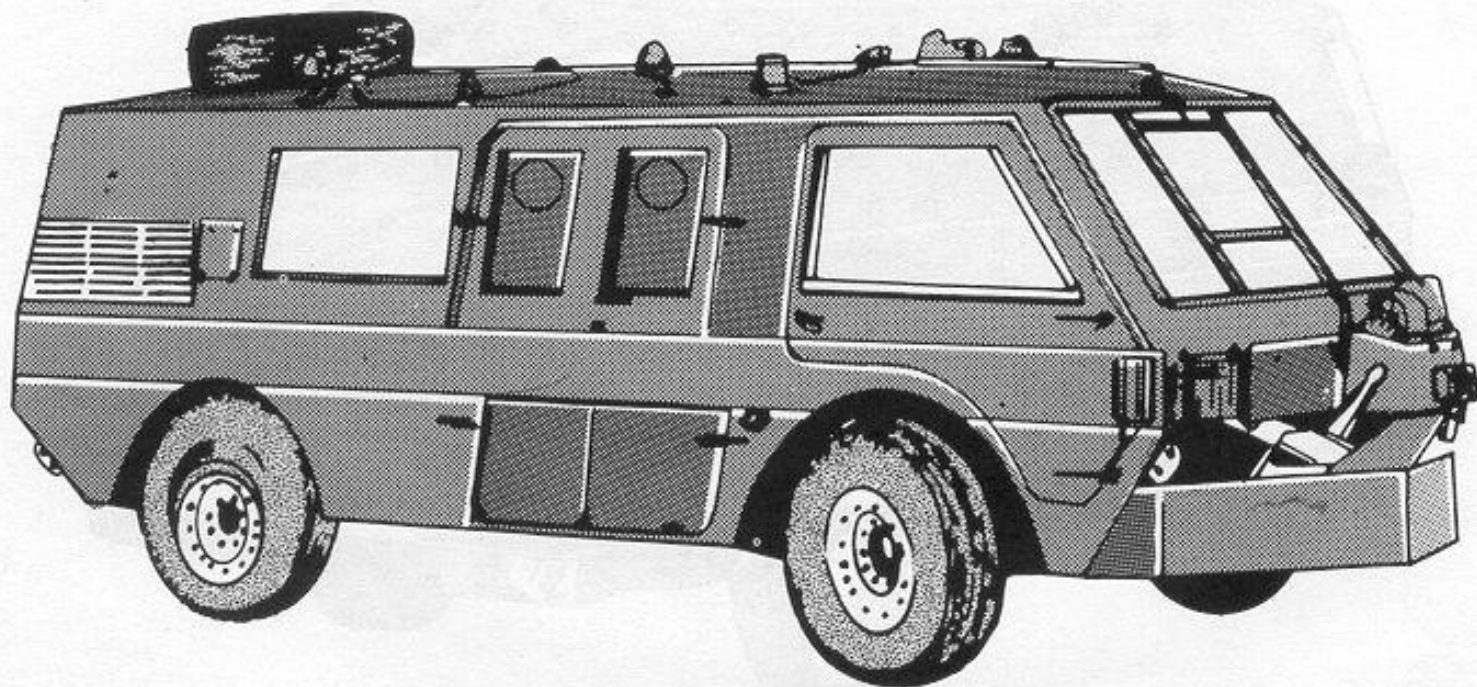


Weapon	ROF	Dam	Pen	Blk	Mag	—Recoil—		Rng
						SS	Brst	
RAI 500	SS	9	2-2-3	4	1i	8	—	50 (50)*
bipod	SS	9	2-2-3	4	1i	8	—	200 (100)*

*Smaller ranges are for regular 12.7mm BMG ammunition.

All sniper rifles come with a scope. With the scope, add 15 meters to the basic range for *aimed* shots. If the scope is later damaged or lost (or for quick shots), this modifier is not added.

Recreational Vehicle



Price: \$45,000 (C/C)

Fuel Type: G, A

Load: 1 ton

Veh Wt: 3 tons

Crew: 1+4

Mnt: 6

Night Vision: Headlights

Damage Record

Crewmembers: Driver

Passengers: 1 2 3 4

Sight/Vision: Night vision equipment

Engine:

Fuel (% Consumed or Destroyed):

Suspension: Minor damage Immobilized

Recreational Vehicle (Unarmored Cargo Vehicle): RVs are favorite vehicles of special operations and espionage teams. They're fairly inconspicuous, large enough to hold surveillance equipment, and comfortable enough for long occupancy.

***Tr Move:* 160/30**

***Com Move:* 45/8**

***Fuel Cap:* 120**

***Fuel Cons:* 32**

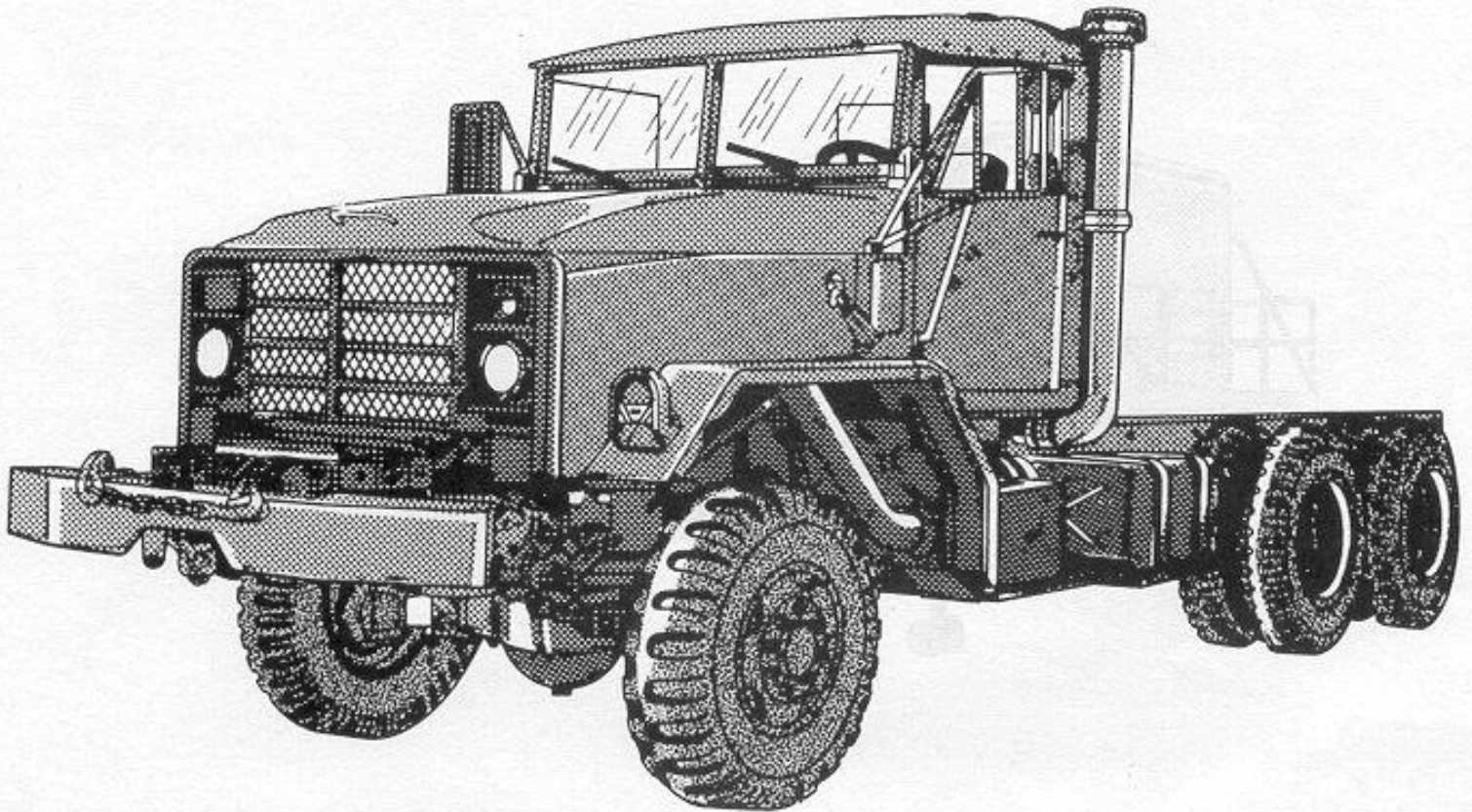
Combat Statistics

Config: Stnd HF: 1

Susp: W (2) HS: 1

HR: 1

Semi-Trailer Tractor



Price: \$100,000 (C/C)

Fuel Type: D, A

Load: 500 kg

Veh Wt: 9 tons

Crew: 1+1

Mnt: 6

Night Vision: Headlights

Damage Record

Crewmembers: Driver

Passengers: 1

Sight/Vision: Night vision equipment

Radio:

Engine:

Fuel (% Consumed or Destroyed):

Suspension: Minor damage Immobilized

Semi-Trailer Tractor (Unarmored Cargo Vehicle): These can be found on the highways in most countries. North America has the greatest concentration of them, and uses them for cargo-transport jobs other countries relegate to trains. Each is usually equipped with a citizens-band radio.

Tr Move: 180/30

Com Move: 40/8

Fuel Cap: 280

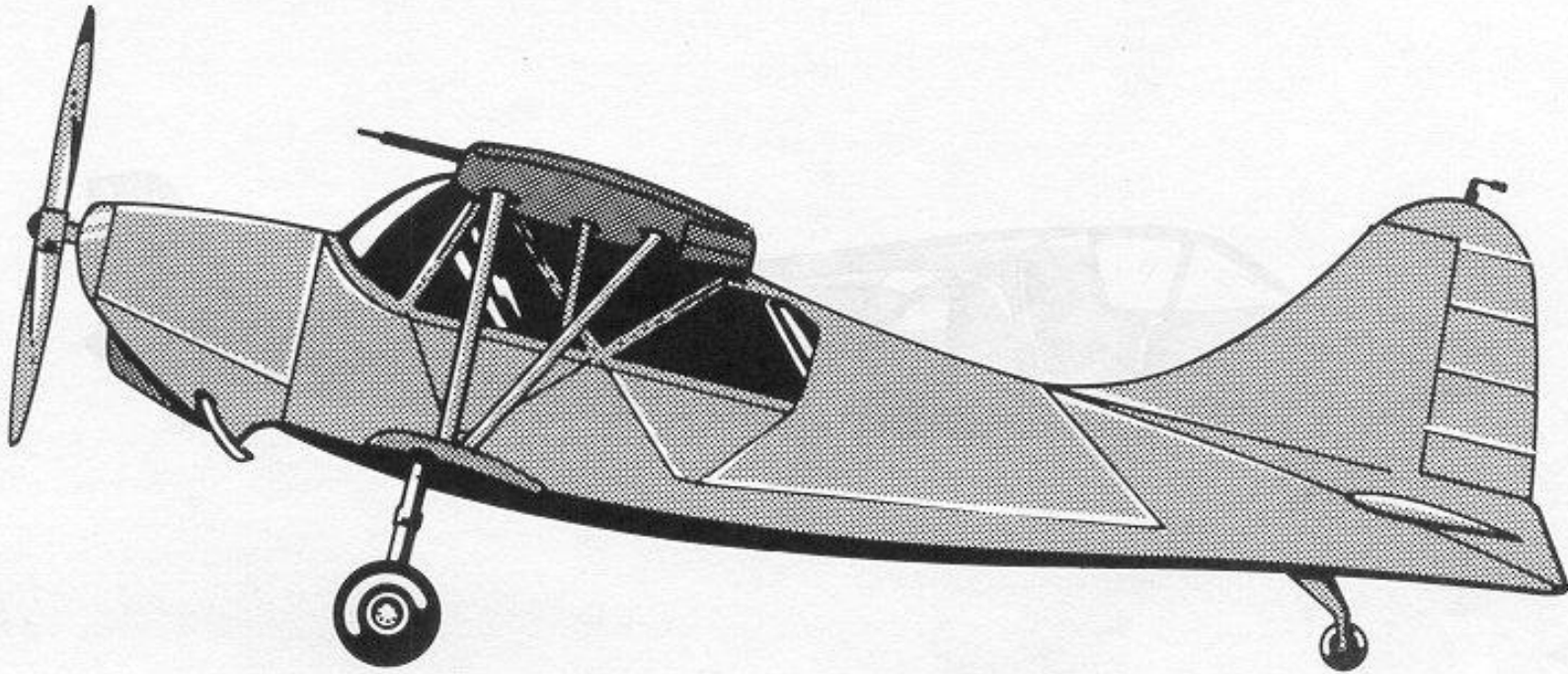
Fuel Cons: 58

Combat Statistics

Config: Std HF: 1

Susp: W (2) HS: 1

HR: 1



Merc: 2000 Price: \$125,000 (S/C)

Twilight: 2000 Price: \$275,000 (R/S)

Fuel Type: AvG, G, A

Load: 250 kg

Veh Wt: 4 tons

Crew: 1+3

Mnt: 4

Night Vision: None

Runway Type: Hardened or primitive, if fitted with reinforced landing gear

Min. Runway, Takeoff/Land: 400/250 m

Damage Record

Crewmembers: Pilot

Passengers: 1 2 3

Radio:

Instruments:

Controls:

Engine:

Fuel (% Consumed or Destroyed):

Wings: Damaged Destroyed

Small Monoplane (Fixed-Wing Aircraft): The mercenary trade is filled with small aircraft. They're readily available, fast, easy to maintain and relatively inexpensive (by comparison to a helicopter). IR SAM missiles firing at this type of propeller aircraft are at one level of difficulty greater to hit, because there's precious little IR signature to track. Reinforced landing gear for primitive airfields costs an additional \$10,000 and can only be installed upon purchase.

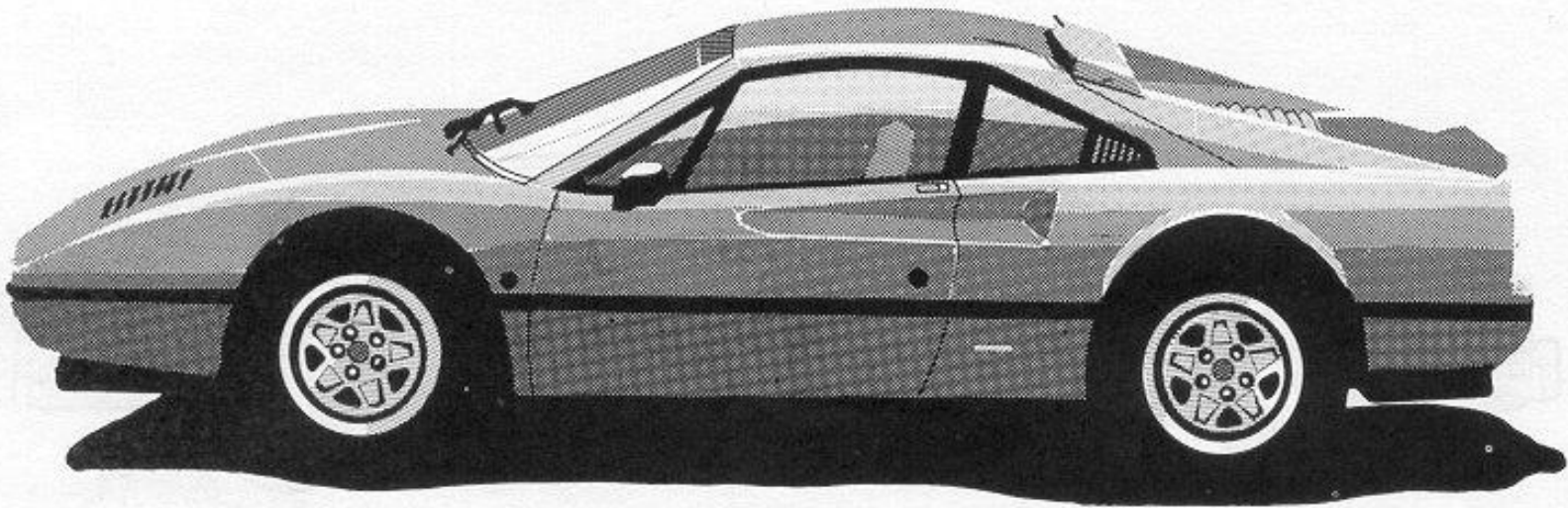
Tr Move: 1650

Com Move: 44 (12)

Fuel Cap: 1150

Fuel Cons: 1150

Sports Car



Price: \$30,000 (C/C)
Fuel Type: G, A, AvG
Load: 250 kg
Veh Wt: 1.5 tons
Crew: 1+1
Mnt: 6
Night Vision: Headlights

Damage Record

Crewmembers: Driver
Passengers: 1
Sight/Vision: Night vision equipment
Radio:
Weapon:
Loader:
Traverse:
Engine:
Fuel (% Consumed or Destroyed):
Suspension: Minor damage Immobilized

Sports Car (Unarmored Cargo Vehicle): Built for speed rather than carrying capacity, this car is representative of a number of similar vehicles throughout the world.

***Tr Move:* 200/30**
***Com Move:* 60/10**
***Fuel Cap:* 80**
***Fuel Cons:* 5**

Combat Statistics

Config: Stnd HF: 1
Susp: W (2) HS: 1
 HR: 1