

TOWER OF THE ELRELI

A Swords and Wizardry one-page mini-dungeon for four to six characters of levels 1-3

Written By Steve Gilman
Edited by Sarah Gilman
Art by Gary Dupuis

ADVENTURE BACKGROUND

The Elreli were a sect of wizards who dedicated their lives to research and experimentation regarding the infusion of magic into living creatures. While the infusion wasn't a difficult process, all creatures they infused shared the same flaw: the infusion process left them with an overwhelming hatred for all other living beings.

The research lasted for many years until an accident caused the remaining of the Elreli to abandon their tower. With a mispronunciation of a word in his experimental spell, Jaoth, the Elreli's head wizard, commanded his magic to combine the stone of the table he was working on with himself. The result was a magic-wielding stone colossus that wreaked havoc on the third floor of the tower, which caused a magical corruption of the tower and its surrounding area.

Those Elreli that weren't killed by Jaoth fled the tower. The Tower of the Elreli has remained in this state since, though the magic of the area has continued to carry out Jaoth's last spell: combining creatures in the area with nearby pieces of the landscape.

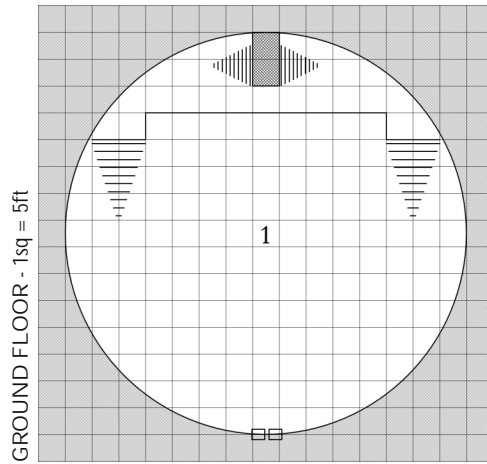
THE MAGICAL CORRUPTION

Due to the magical corruption in and around the tower, each time a spell is cast the effect is amplified in a random way. Roll 1d4. On a 1, the spell is boosted, increasing all numerical aspects by 50%. On a 2, the spell is cast but is retained by the caster. On a 3, the spell also affects the caster (if the spell was targeting the caster, it affects her twice). On a 4, in addition to the spell's regular effects, the magic of the spell arcs off to a nearby critter and creates an amalgamation. Roll for a random amalgamation.

AMALGAMATIONS

The amalgamations are the result of the magical energies in the area combining critters with nearby objects.

1. 2d6 Blade Amalgamations: HD 2; AC 8 [11]; Atk slash (1d6); Move 12; Save 16; AL C; CL/XP 3/60; Special: Takes half damage from slashing or piercing weapons; Appearance: This small creature is an amalgamation of a rat and bladed objects.



GROUND FLOOR - 1sq = 5ft

2. 1 Spike Amalgamation: HD 4+1; AC 7 [12]; Atk 2 claws (1d3) and bite (1d6); Move 9; Save 13; AL C; CL/XP 4/120; Special: hit for both claws causes a spiked hug for 1d10 additional damage, spikes protruding from body cause 1d3 damage to melee attackers; Appearance: This large creature is an amalgamation of a bear and a set of spears.

3. 1 Potion Amalgamation: HD 3; AC 8 [11]; Atk smash (1d3); Move 15; Save 14; AL C; CL/XP 4/120; Special: When hit, gains the effect of a random potion; Appearance: This small creature is an amalgamation of a small fey with a number of filled potions.

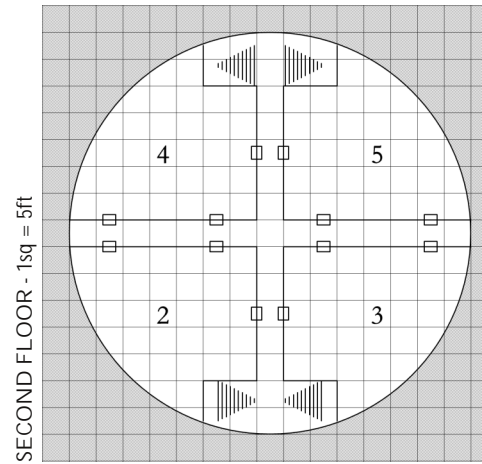
4. 4d6 Dinnerware Amalgamations: HD 1hp; AC 6 [13]; Atk break (1d3); Move 24 (flying); Save 18; AL C; CL/XP A/5; Special: Dies as it shatters after hitting with an attack, 50% chance to shatter on miss; Appearance: This small creature is an amalgamation of a dinner plate and a small bird.

5. 1 Clock Amalgamation: HD 3; AC 5 [14]; Atk 2 bashes (1d8); Move 18; Save 14; AL C; CL/XP 4/120; Special: Controls time and moves and attacks with increased speed (already factored in stats), takes 50% additional damage from fire attacks; Appearance: A squirrel has been combined with the grandfather clock it nested in.

6. 1d6 Spore Amalgamations: HD 3; AC 4 [15]; Atk 2 claws (1d4) and bite (1d6); Move 6; Save 14; AL C; CL/XP 3/60; Special: When it dies, 1d6 spores are released which quickly become sporelings; Appearance: A giant badger has been combined with a troop of mushrooms.

Sporeling: HD 1d6; AC 7 [12]; Atk fist (1d6); Move 12; Save 17; AL C; CL/XP B/10; Special: None.

GROUND FLOOR. The front door to the ground floor has been broken open.



SECOND FLOOR - 1sq = 5ft

1. MAIN HALL. The first floor of the tower is a large main hall. Stairs lead up to a viewing balcony with a second set of stairs leading to the second level. Once decorated with fancy carpets and tapestries, the main hall is now filled with rubble, dirt, and the remains of many animals.

Monsters: A spike amalgamation roams the ground floor.

SECOND FLOOR. The doors to the 4 labs on this floor have either been broken open or have rotted away.

2. FUNGI LAB. This lab was once used by wizards experimenting with the infusion of magic into various types of fungi.

Monsters: There are 4 spore amalgamations in the fungi lab.

3. DESTROYED LAB. The original purpose of this lab is no longer discernable. The outside wall has crumbled away, leaving the room open to the outside.

Monsters: 20 dinnerware amalgamations will flock to this room if it's disturbed. They will begin dive bombing into the room at any living creatures inside.

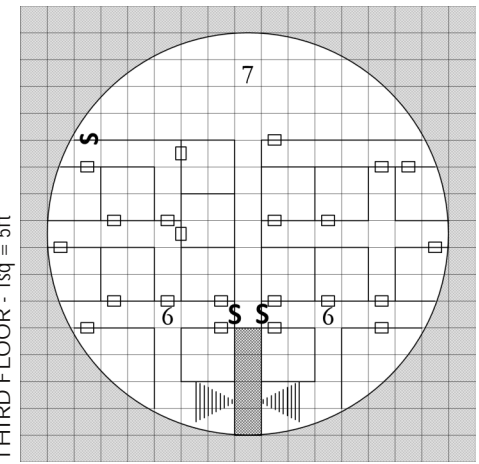
4. ALCHEMY LAB. This laboratory was once used for the crafting of potions. Most of the equipment here has been destroyed.

Monsters: A potion amalgamation is hiding in the room amongst the rubble.

Treasure: 2 potions of healing, 1 potion of heroism, and 1 potion of levitation.

5. ANIMAL LAB. The remains of many animals can be found here, along with tools and instruments for dissecting them.

Monsters: A colony of rats have been turned into 10 blade amalgamations, which swarm out to attack the PCs when they become aware of them.



THIRD FLOOR - 1sq = 5ft

THIRD FLOOR. The doors on this floor are all closed and have stayed intact.

6. LIVING QUARTERS. The living quarters for the wizards of the Elreli are arranged in a maze-like fashion on this floor. There are two separate sections of quarters depending on which set of stairs were used to get to the third floor. There is a 2 in 6 chance in each area (room or hall) of amalgamations being present (roll randomly to determine which kind).

7. HIGH WIZARD QUARTERS. This large area was once the living quarters and personal lab of Jaoth and is where he miscast his spell and transformed. The room has been thoroughly smashed. The outer wall has been broken open, which is what caused the rest of the tower to tip and break off.

Monsters: A stone amalgamation, which was once Jaoth, can be found here.

Stone Amalgamation: HD 4; AC 3 [16]; Atk 1 slam (1d8); Move 9; Save 13; AL C; CL/XP 5/240; Special: Takes half damage from physical damage, spells as 3rd level magic-user (mirror image, magic missile x2, sleep); Appearance: A twisted humanoid form made out of a mix of flesh and rock.

Treasure: In a chest partially buried by some rubble is Jaoth's wealth: an Atrophied Staff of the High Wizard, a ruby worth 821gp, Jaoth's spellbook (contains charm person, detect magic, light, magic missile, read languages, read magic, sleep, mirror image, wizard lock), and 860gp in various coins.

Atrophied Staff of the High Wizard: This staff was once held a more powerful magic, but has been sapped by the magic in the area. Currently, if a magic-user or cleric casts a 1st level spell into the staff, it will hold it indefinitely until it is expended to cast the spell. A stored spell can only be cast from the staff by the same type of caster that put it into the staff.

Copyright © 2015 Steve Gilman. All rights reserved. Tower of the Elreli, Betrayal at Lucir, The Sundered Blade, and Sundered Blade Games are trademarks of Steve Gilman.

Swords & Wizardry, S&W, and Mythmere Games are trademarks of Matthew J. Finch. Sundered Blade Games and Steve Gilman are not affiliated with Matthew J. Finch, Mythmere Games™, or Frog God Games. Swords & Wizardry Compatibility Logo by Christopher Arendt is licensed under a Creative Commons Attribution-ShareAlike 4.0 International License.

Visit us on the web at www.sunderedblade.com.

LEGAL APPENDIX

Product Identity: The following items are hereby identified as Product Identity, as defined by the Open Game License version 1.0a, Section 1(e), and are not Open Content: All trademarks, registered trademarks, proper names (characters, deities, artifacts, places, etc), dialog, plots, storylines, language, concepts, incidents, locations, characters, artwork, and trade dress.

Open Content: Except for material designated as Product Identity (see above), the contents of this product are Open Game Content as defined in the Open Gaming License version 1.0a Section 1(d). No portion of this work other than the material designated as Open Game Content may be reproduced in any form without written permission.

OPEN GAME LICENSE Version 1.0a

The following text is the property of Wizards of the Coast, Inc. and is Copyright 2000 Wizards of the Coast, Inc ("Wizards"). All Rights Reserved.

1. Definitions: (a) "Contributors" means the copyright and/or trademark owners who have contributed Open Game Content; (b) "Derivative Material" means copyrighted material including derivative works and translations (including into other computer languages), potation, modification, correction, addition, extension, upgrade, improvement, compilation, abridgment or other form in which an existing work may be recast, transformed or adapted; (c) "Distribute" means to reproduce, license, rent, lease, sell, broadcast, publicly display, transmit or otherwise distribute; (d) "Open Game Content" means the game mechanic and includes the methods, procedures, processes and routines to the extent such content does not embody the Product Identity and is an enhancement over the prior art and any additional content clearly identified as Open Game Content by the Contributor, and means any work covered by this License, including translations and derivative works under copyright law, but specifically excludes Product Identity. (e) "Product Identity" means product and product line names, logos and identifying marks including trade dress; artifacts; creatures characters; stories, storylines, plots, thematic elements, dialogue, incidents, language, artwork, symbols, designs, depictions, likenesses, formats, poses, concepts, themes and graphic, photographic and other visual or audio representations; names and descriptions of characters, spells, enchantments, personalities, teams, personas, likenesses and special abilities; places, locations, environments, creatures, equipment, magical or supernatural abilities or effects, logos, symbols, or graphic designs; and any other trademark or registered trademark clearly identified as Product identity by the owner of the Product Identity, and which specifically excludes the Open Game Content; (f) "Trademark" means the logos, names, mark, sign, motto, designs that are used by a Contributor to identify itself or its products or the associated products contributed to the Open Game License by the Contributor (g) "Use", "Used" or "Using" means to use, Distribute, copy, edit, format, modify, translate and otherwise create Derivative Material of Open Game Content. (h) "You" or "Your" means the licensee in terms of this agreement.

2. The License: This License applies to any Open Game Content that contains a notice indicating that the Open Game Content may only be Used under and in terms of this License. You must affix such a notice to any Open Game Content that you Use. No terms may be added to or subtracted from this License except as described by the License itself. No other terms or conditions may be applied to any Open Game Content distributed using this License.

3. Offer and Acceptance: By Using the Open Game Content You indicate Your acceptance of the terms of this License.

This mini-dungeon is designed to be easily dropped into your existing campaign or adventure.

You can also use it to expand Area E in module SC2: Betrayal at Lucir. Find out more about Betrayal at Lucir and other roleplaying game products at www.sunderedblade.com.



This module can be printed double-sided and folded in half to create a 5.5in x 8.5in booklet.

4. Grant and Consideration: In consideration for agreeing to use this License, the Contributors grant You a perpetual, worldwide, royalty-free, non-exclusive license with the exact terms of this License to Use, the Open Game Content.

5. Representation of Authority to Contribute: If You are contributing original material as Open Game Content, You represent that Your Contributions are Your original creation and/or You have sufficient rights to grant the rights conveyed by this License.

6. Notice of License Copyright: You must update the COPYRIGHT NOTICE portion of this License to include the exact text of the COPYRIGHT NOTICE of any Open Game Content You are copying, modifying or distributing, and You must add the title, the copyright date, and the copyright holder's name to the COPYRIGHT NOTICE of any original Open Game Content you Distribute.

7. Use of Product Identity: You agree not to Use any Product Identity, including as an indication as to compatibility, except as expressly licensed in another, independent Agreement with the owner of each element of that Product Identity. You agree not to indicate compatibility or co-adaptability with any Trademark or Registered Trademark in conjunction with a work containing Open Game Content except as expressly licensed in another, independent Agreement with the owner of such Trademark or Registered Trademark. The use of any Product Identity in Open Game Content does not constitute a challenge to the ownership of that Product Identity. The owner of any Product Identity used in Open Game Content shall retain all rights, title and interest in and to that Product Identity.

8. Identification: If you distribute Open Game Content You must clearly indicate which portions of the work that you are distributing are Open Game Content.

9. Updating the License: Wizards or its designated Agents may publish updated versions of this License. You may use any authorized version of this License to copy, modify and distribute any Open Game Content originally distributed under any version of this License.

10. Copy of this License: You MUST include a copy of this License with every copy of the Open Game Content You Distribute.

11. Use of Contributor Credits: You may not market or advertise the Open Game Content using the name of any Contributor unless You have written permission from the Contributor to do so.

12. Inability to Comply: If it is impossible for You to comply with any of the terms of this License with respect to some or all of the Open Game Content due to statute, judicial order, or governmental regulation then You may Not Use any Open Game Material so affected.

13. Termination: This License will terminate automatically if You fail to comply with all terms herein and fail to cure such breach within 30 days of becoming aware of the breach. All sublicenses shall survive the termination of this License.

14. Reformation: If any provision of this License is held to be unenforceable, such provision shall be reformed only to the extent necessary to make it enforceable.

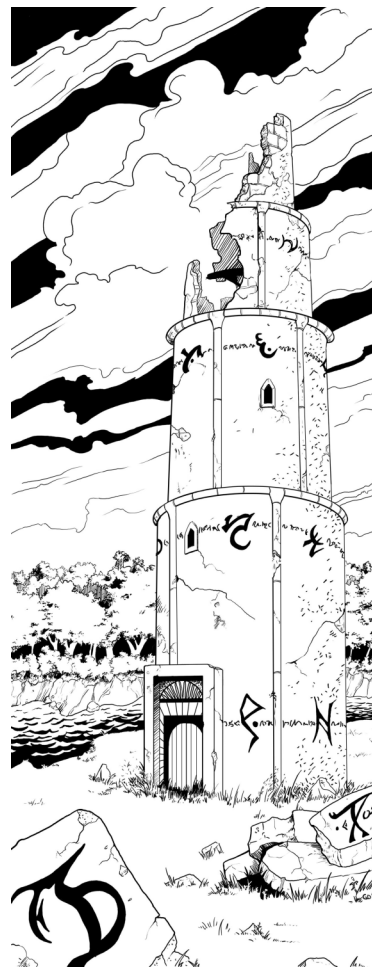
15. COPYRIGHT NOTICE

Open Game License v 1.0 Copyright 2000, Wizards of the Coast, Inc. System Reference Document Copyright 2000-2003, Wizards of the Coast, Inc.; Authors Jonathan Tweet, Monte Cook, Skip Williams, Rich Baker, Andy Collins, David Noonan, Rich Redman, Bruce R. Cordell, John D. Rateliff, Thomas Reid, James Wyatt, based on original material by E. Gary Gygax and Dave Arneson.

Swords & Wizardry Core Rules, Copyright 2008, Matthew J. Finch
Swords & Wizardry Complete Rules, Copyright 2010, Matthew J. Finch
Tower of the Elreli, Copyright 2015, Steve Gilman

TOWER OF THE ELRELI

One-Page Adventure Module O2



A mini-dungeon for four to six characters of levels 1-3
Compatible with the Swords and Wizardry rules

By Steve Gilman

