

# POKÉMON®

## DOSSIER



# POKÉMON CHARACTERS

## ASH KETCHUM



He's 10 years old (in "The Battle of The Badge"). He has many friends: Misty and Brock (the Kanto region and Johto), Misty and Tracey (in the Orange Islands), Brock, May and Max (Hoenn region and the Battle Frontier saga) and Brock and Dawn (at the Sinnoh region).

His rivals are Gary Oak (professor Oak's grandson)

## PIKACHU

Pikachu is a little, yellow mouse – like creature with a lightning bolt tail and the ability to create an electrical jolt from its cheeks. It's the Pokémon that Ash receives from Professor Oak to start his adventure.



## GARY OAK

He's Ash Ketchum's rival. His Pokémon is Eevee. After the Johto story arc, Gary decides to become a Pokémon researcher like his grandfather, Professor Oak.



## MAY

She goes with Ash Ketchum on his Pokémon journey starting in the Hoenn Arc of the story. She gets her first Pokémon – Torchic – from Professor Birch. She's 10 years old. She and her brother, Max, traveled with Ash to Hoenn and Battle Frontier Arcs.



## MISTY



She loves marine Pokémon and she wants to be the world's greatest Water-type trainer.

## MAX

Max is May's brother. He loves his Pokémon. He's 9 years old.



### JESSIE



Jessie is a member of Team Rocket with Meowth and James. She is a bossy person.

### JAMES

James is a member of Team Rocket, an organized criminal syndicate dedicated to stealing and using other people's Pokémon for bad things.



### ASH KETCHUM DESCRIPTION

He's got... / He's...



---

---

---

---

---

---

---

### TIPS

- Black / blonde hair**
- Brown / blue / green eyes**
- Tall / short / medium**
- Intelligent / brave / shy / coward /**

# SOME POKÉMON CHARACTERS

## #142 Aerodactyl Pokedex

**Japanese Name:** PUTERA

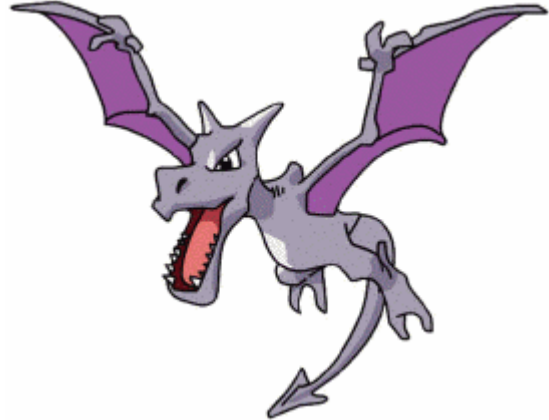
**Type:** Rock/Flying

**Species:** Fossil

**Height:** 5' 11"

**Weight:** 130 lbs

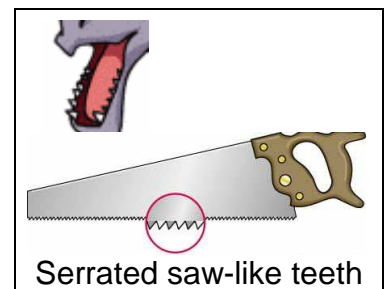
**Evolution:** The Mysterious Fossil (old amber) turns into Aerodactyl in the Lab on Cinnebar Island. No further evolution.



**Advantages:** Fire, Ice, Grass, Fighting, and Bug

**Disadvantages:** Ground and Fighting

**Description:** A Prehistoric Pokémon. He attacks enemies with his serrated saw-like teeth.



## #015 Beedrill Pokedex

**Japanese Name:** Supiaa

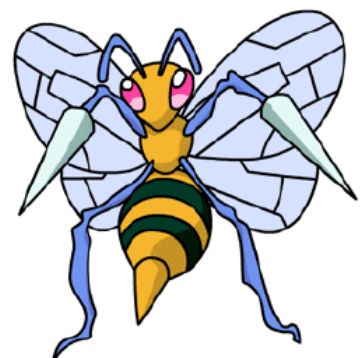
**Type:** Bug, Poison, Flying

**Species:** Poison Bee

**Height:** 3' 03"

**Weight:** 65.0 lbs

**Evolution:** [Weedle](#) evolves to [Kakuna](#) at level 7  
[Kakuna](#) evolves to [Beedrill](#) at level 10



**Description:** It has three **poisonous stings** on its **legs** and its **tail**. When Kakuna reaches Level 10, it will evolve into the much more powerful Beedrill. Beedrill have the capacity to learn attacks as Twin Needle and Pin Missile.

**Good against:** Grass and Psychic



sting

**Bad against:** Fire, Fighting, Flying, and Ghost

## #001 Bulbasaur Pokedex

**Japanese Name:** FUSHIGIDANE

**Type:** Grass/Poison

**Species:** Seed

**Height:** 2' 4"

**Weight:** 15 lbs



**Evolution:** [Bulbasaur](#) evolves to [Ivysaur](#) at level 13  
[Ivysaur](#) evolves to [Venusaur](#) at level 32




**Advantages:** Water, Ground, Rock

**Disadvantages:** Fire, Poison, Flying, Bug, Dragon, Steel, Ground

**Immunities:** Steel

**Description:** Bulbasaur are a combination of Grass-type and Poison-type Pokémon. Because they are Grass-type Pokémon, Bulbasaur have plant-like characteristics. Bulbasaur will evolve into **Ivysaur** and **Venusaur**.

### BULBASAUER EVOLUTION

		
<b>Bulbasaur</b>	<b>Ivysaur</b>	<b>Venusaur</b>

Bulbasaur = bulb + saur (dinosaur) → It means \_\_\_\_\_ and \_\_\_\_\_.

Ivysaur = ivy + saur (dinosaur) → It means \_\_\_\_\_ and \_\_\_\_\_.

Venusaur = \_\_\_\_\_ + \_\_\_\_\_ → It means \_\_\_\_\_ and \_\_\_\_\_.

## #010 Caterpie Pokedex

**Japanese Name:** KYATAPII

**Type:** Bug

**Species:** Worm

**Height:** 1' 0"

**Weight:** 6 lbs

**Evolution:** [Caterpie](#) evolves to [Metapod](#) at level 7  
[Metapod](#) evolves to [Butterfree](#) at level 10



**Description:** This sweet little Pokémon is a lot like a caterpillar. It has short feet with suction cups on the ends. It can climb walls and trees. Its String Shot slows down Caterpie's enemies. It evolves quickly. It is possible that you may want to stop its evolution and build up its experience. Once Caterpie changes into a Metapod, it will not be able to move.

If you touch the feeler on top of its head, it will release a horrible stink to protect itself.

**Advantages:** Grass and Psychic

**Disadvantages:** Fire, Fighting, Flying, and Ghost

## #012 Butterfree Pokedex

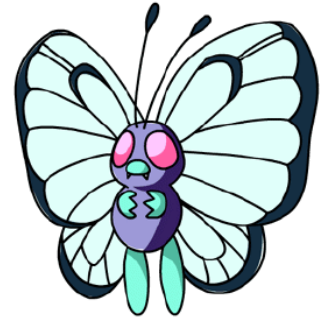
**Japanese Name:** BATAFURI

**Type:** Bug, Flying

**Species:** Butterfly

**Height:** 3' 07"

**Weight:** 71.0 lbs

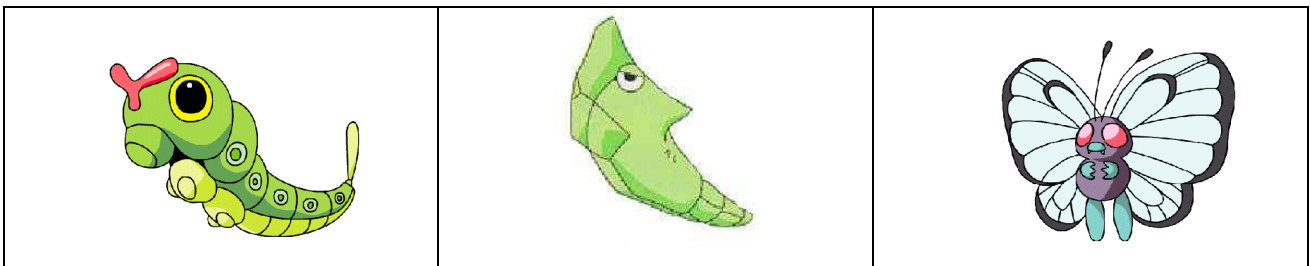


**Evolution:** [Caterpie](#) evolves to [Metapod](#) at level 7  
[Metapod](#) evolves to [Butterfree](#) at level 10

**Description:** Its wings have poison. It can fly in the rain.

**Advantages:** Grass and Psychic

**Disadvantages:** Fire, Fighting, Flying, and Ghost



**Metapod – butterfree – caterpie**


Caterpie → it's similar to "Caterpillar"



Butterfree → It's similar to "butterfly"



## #005 Charizard Pokedex

<p><b>Japanese name:</b> LIZARDON</p> <p><b>Type:</b> Fire, Flying</p> <p><b>Species:</b> Lizard</p> <p><b>Weight:</b> 200.00 lbs.</p> <p>Height: 5' 7"</p>	 A cartoon illustration of Charizard, a large orange and yellow dragon-like creature with green wings. It is shown breathing a large plume of fire from its mouth, with a smaller flame on its tail.
---	--

**Advantages:** Grass, Ice, Bug, Fighting

**Disadvantages:** Fire, Water, Rock, Dragon, Electric

### Evolution:



[Charmander](#) evolves into [Charmeleon](#) at Level 16.

[Charmeleon](#) evolves into [Charizard](#) at Level 36.

### Description:

Spits fire. It can cause forest fires. When he expells super hot fire, the red flame at the tail is more intense.

### EVOLUTION:

 <p>Charmander</p>	 <p>Charmeleon</p>	 <p>Charizard</p>
---	---	--



## #116 Horsea Pokedex

**Japanese Name:** TATSU

**Type:** Water

**Species:** Dragon

**Height:** 1' 04"

**Weight:** 18.0 lbs

**Evolution:**

[Horsea](#) evolves to [Seadra](#) at level 32

**Advantages:** Fire, Ground, and Rock

**Disadvantages:** Water, Electric, Grass, Dragon

**Description:** Known to shoot down flying bugs with precision blasts of ink from the surface of the water. If Horsea senses danger, it will reflexively spray a dense black ink from its mouth and try to escape. This POKÉMON swims by cleverly flapping the fins on its back.



### Horsea's Evolution:

**Seadra**



## Ash's Pokemon:

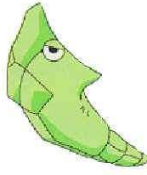
### Pokemon (1st Season)



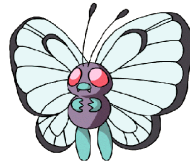
1. [Pikachu](#)



2. [Caterpie](#) >



[Metapod](#) >



[Butterfree](#)



3. [Pidgey](#) >



[Pidgeotto](#)



4. [Bulbasaur](#)



5. [Squirtle](#)



6. [Charmander](#) >



[Charmeleon](#) >



[Charizard](#)

# Find the Pokemon

ELEKID  
DONPHAN  
SPINARAK



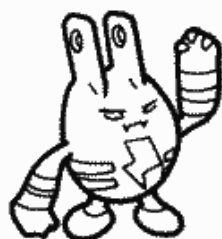
TOGEPI  
BLISSEY



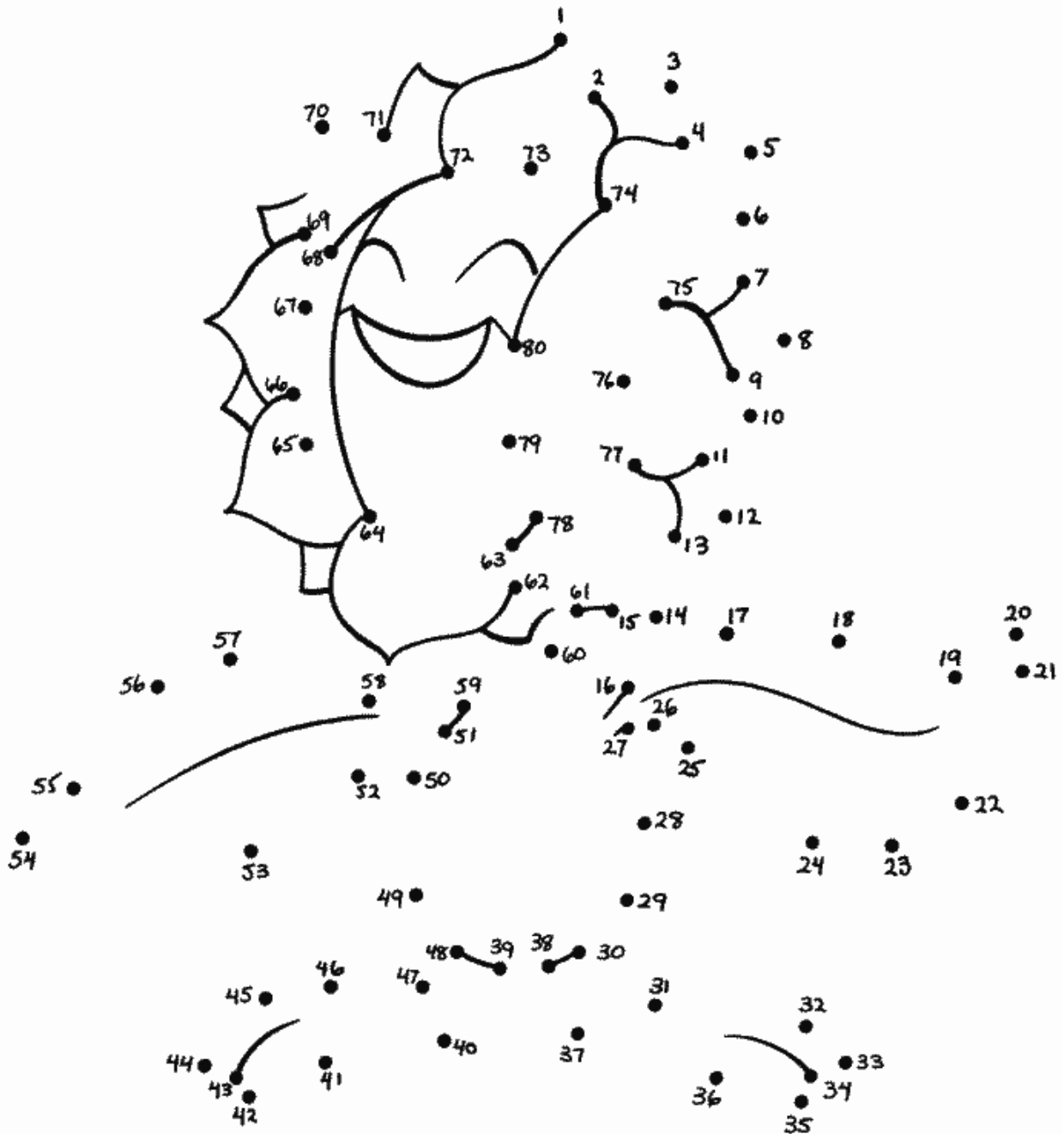
LUGIA  
SCIZOR  
SNUBBULL



E S S P I N A R A K  
E C R B N M T R L U  
R I L E I M R N L S  
Y Z N U X C U K U D  
E O I N G B E T B I  
S R U M B I T O B K  
S D L U U B A N U E  
I P E G O T O I N L  
L L J L U O T Y S E  
B V D O N P H A N J

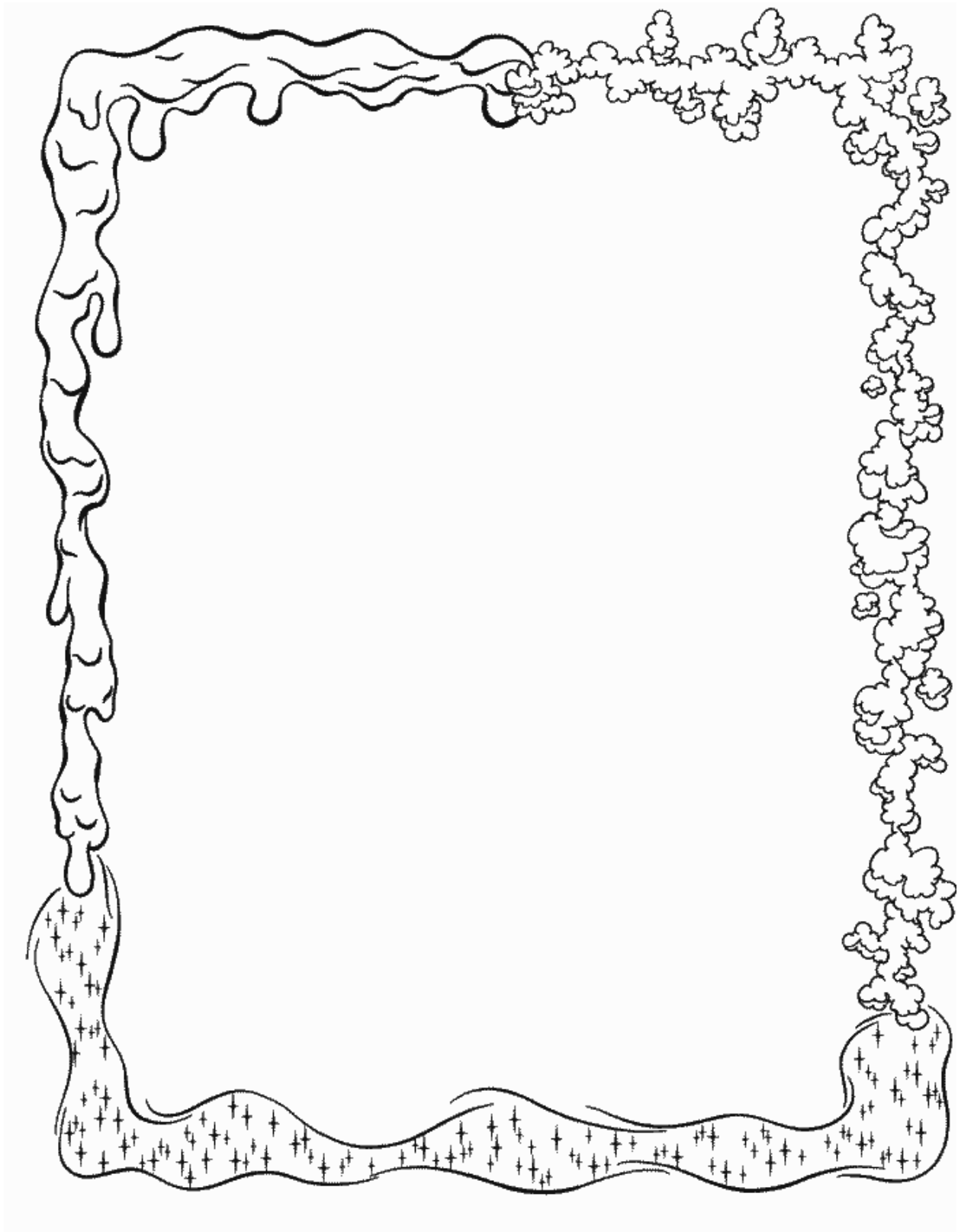


Connect the dots to see this new grass Pokémon.

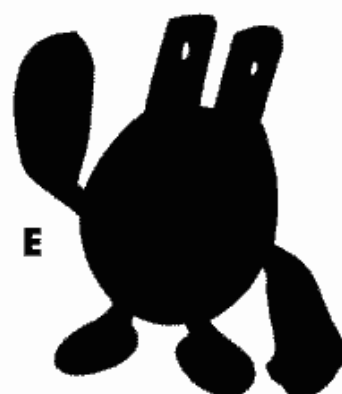
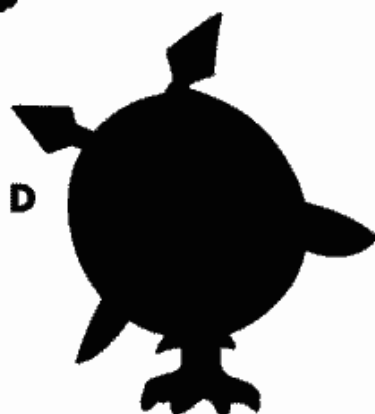
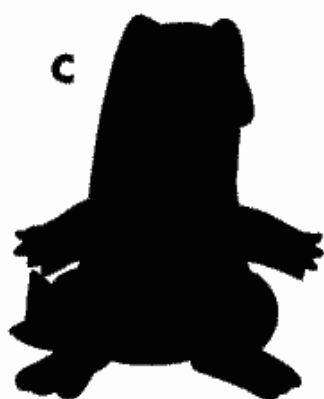


ANSWER: SUNFLORA

**INVENT YOUR OWN POKÉMON:**

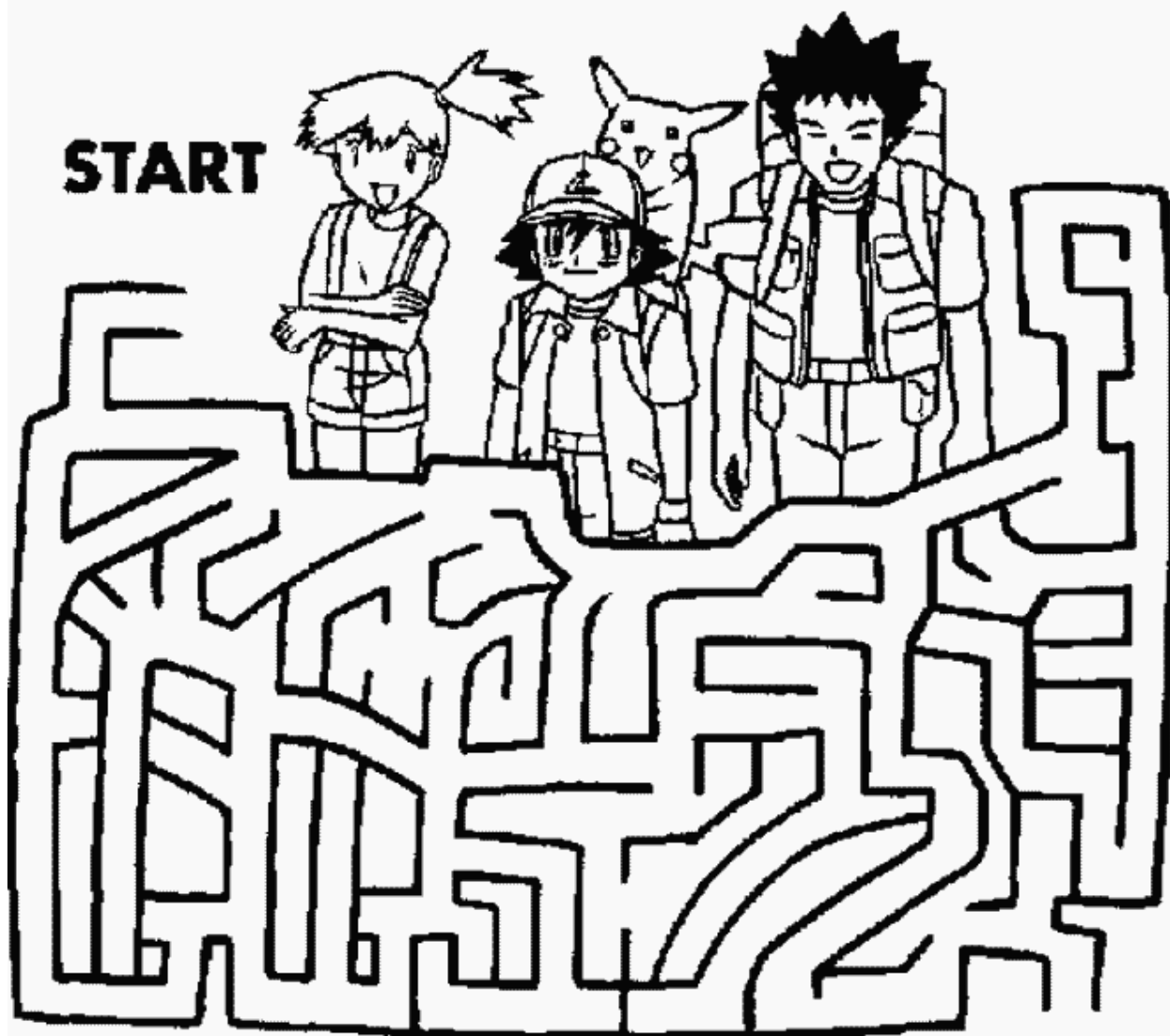


Can you identify these Pokémon by their shadows?



Help Ash and his friends get to a new city.

**START**



**Help Ho-oh fly through the clouds.**

