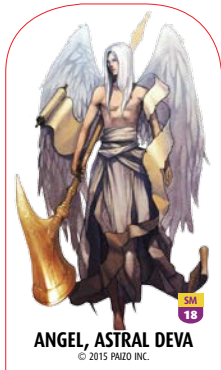


BATTFINDER[®] PAWNS[™]



SUMMON MONSTER[®]

PAWN COLLECTION



ANGEL, ASTRAL DEVA
© 2015 PAIZO INC.



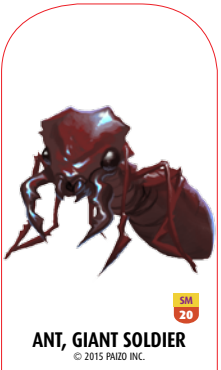
ANT, GIANT DRONE
© 2015 PAIZO INC.



ANT, GIANT DRONE
© 2015 PAIZO INC.



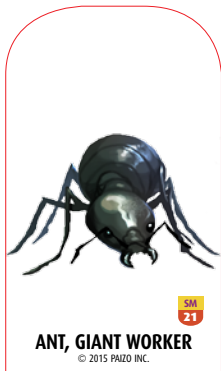
ANT, GIANT SOLDIER
© 2015 PAIZO INC.



ANT, GIANT SOLDIER
© 2015 PAIZO INC.



ANT, GIANT WORKER
© 2015 PAIZO INC.



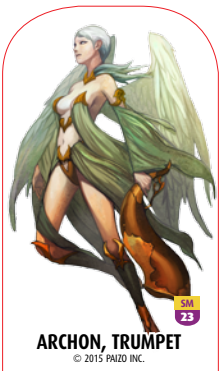
ANT, GIANT WORKER
© 2015 PAIZO INC.



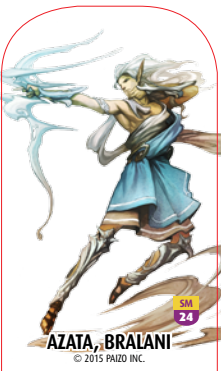
ARCHON, HOUND
© 2015 PAIZO INC.



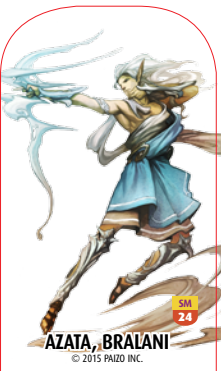
ARCHON, HOUND
© 2015 PAIZO INC.



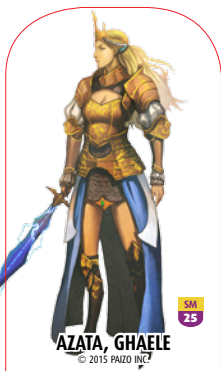
ARCHON, TRUMPET
© 2015 PAIZO INC.



AZATA, BRALANI
© 2015 PAIZO INC.



AZATA, BRALANI
© 2015 PAIZO INC.



AZATA, GHAELE
© 2015 PAIZO INC.



BEETLE, FIRE
© 2015 PAIZO INC.



BEETLE, FIRE
© 2015 PAIZO INC.



BEETLE, FIRE
© 2015 PAIZO INC.



BOAR
© 2015 PAIZO INC.



BOAR
© 2015 PAIZO INC.



CAT, CHEETAH
© 2015 PAIZO INC.



CAT, CHEETAH
© 2015 PAIZO INC.



CAT, LEOPARD
© 2015 PAIZO INC.



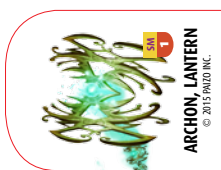
CAT, LEOPARD
© 2015 PAIZO INC.



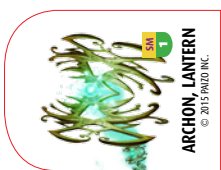
CENTIPEDE, GIANT
© 2015 PAIZO INC.



CENTIPEDE, GIANT
© 2015 PAIZO INC.



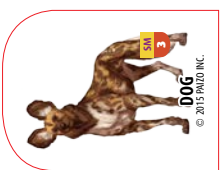
ARCHON, LANTERN
© 2015 PAIZO INC.



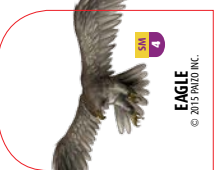
ARCHON, LANTERN
© 2015 PAIZO INC.



DEMON, DRETCH
© 2015 PAIZO INC.



DOG
© 2015 PAIZO INC.



EAGLE
© 2015 PAIZO INC.



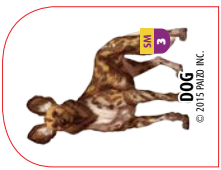
ARCHON, LANTERN
© 2015 PAIZO INC.



ARCHON, LANTERN
© 2015 PAIZO INC.



DEMON, DRETCH
© 2015 PAIZO INC.



DOG
© 2015 PAIZO INC.



DOG
© 2015 PAIZO INC.



DEMON, BABAU
© 2015 PAIZO INC.



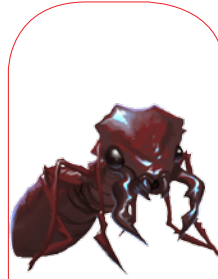
SM
21

ANT, GIANT WORKER
© 2015 PAIZO INC.



SM
20

ANT, GIANT SOLDIER
© 2015 PAIZO INC.



SM
20

ANT, GIANT SOLDIER
© 2015 PAIZO INC.



SM
19

ANT, GIANT DRONE
© 2015 PAIZO INC.



SM
19

ANT, GIANT DRONE
© 2015 PAIZO INC.



SM
18

ANGEL, ASTRAL DEVA
© 2015 PAIZO INC.



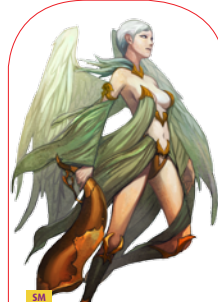
SM
24

AZATA, BRALANI
© 2015 PAIZO INC.



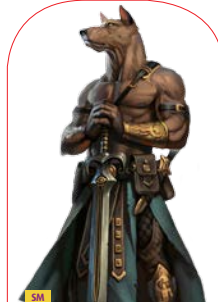
SM
24

AZATA, BRALANI
© 2015 PAIZO INC.



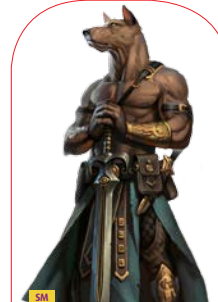
SM
23

ARCHON, TRUMPET
© 2015 PAIZO INC.



SM
22

ARCHON, HOUND
© 2015 PAIZO INC.



SM
22

ARCHON, HOUND
© 2015 PAIZO INC.



SM
21

ANT, GIANT WORKER
© 2015 PAIZO INC.



SM
27

BOAR
© 2015 PAIZO INC.



SM
27

BOAR
© 2015 PAIZO INC.



SM
26

BEEBLE, FIRE
© 2015 PAIZO INC.



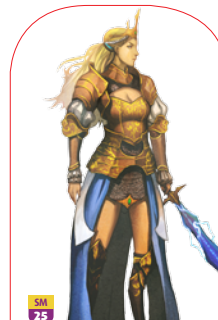
SM
26

BEEBLE, FIRE
© 2015 PAIZO INC.



SM
26

BEEBLE, FIRE
© 2015 PAIZO INC.



SM
25

AZATA, GHAELE
© 2015 PAIZO INC.



SM
30

CENTIPEDE, GIANT
© 2015 PAIZO INC.



SM
30

CENTIPEDE, GIANT
© 2015 PAIZO INC.



SM
29

CAT, LEOPARD
© 2015 PAIZO INC.



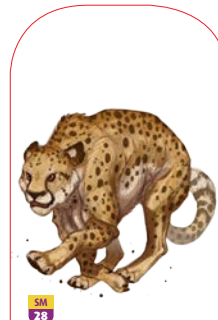
SM
29

CAT, LEOPARD
© 2015 PAIZO INC.



SM
28

CAT, CHEETAH
© 2015 PAIZO INC.



SM
28

CAT, CHEETAH
© 2015 PAIZO INC.



SM
31

DEMON, BABAU
© 2015 PAIZO INC.



SM
4

EAGLE
© 2015 PAIZO INC.



SM
3

DOG
© 2015 PAIZO INC.



SM
2

DEMON, DRETCH
© 2015 PAIZO INC.



SM
1

ARCHON, LANTERN
© 2015 PAIZO INC.



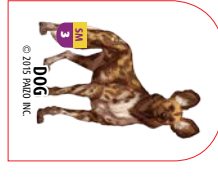
SM
1

ARCHON, LANTERN
© 2015 PAIZO INC.



SM
3

DOG
© 2015 PAIZO INC.



SM
3

DOG
© 2015 PAIZO INC.



SM
2

DEMON, DRETCH
© 2015 PAIZO INC.



SM
1

ARCHON, LANTERN
© 2015 PAIZO INC.

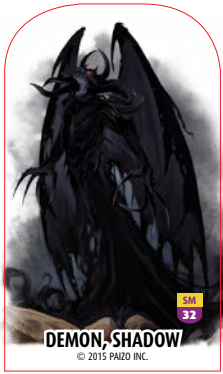


SM
1

ARCHON, LANTERN
© 2015 PAIZO INC.



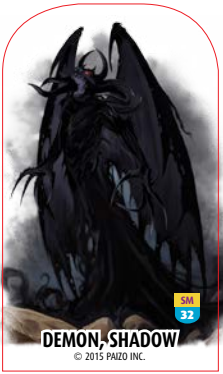
SM 31
DEMON, BABAU
© 2015 PAIZO INC.



SM 32
DEMON, SHADOW
© 2015 PAIZO INC.



SM 32
DEMON, SHADOW
© 2015 PAIZO INC.



SM 32
DEMON, SHADOW
© 2015 PAIZO INC.



SM 33
DEMON, SUCCUBUS
© 2015 PAIZO INC.



SM 33
DEMON, SUCCUBUS
© 2015 PAIZO INC.



SM 34
DEVIL, BARBED
© 2015 PAIZO INC.



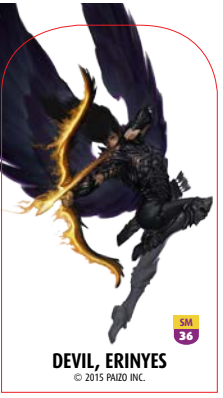
SM 34
DEVIL, BARBED
© 2015 PAIZO INC.



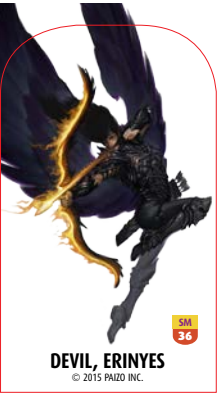
SM 35
DEVIL, BEARDED
© 2015 PAIZO INC.



SM 35
DEVIL, BEARDED
© 2015 PAIZO INC.



SM 36
DEVIL, ERINYES
© 2015 PAIZO INC.



SM 36
DEVIL, ERINYES
© 2015 PAIZO INC.



SM 37
DEVIL, LEMURE
© 2015 PAIZO INC.



SM 37
DEVIL, LEMURE
© 2015 PAIZO INC.



SM 38
DINOSAUR, DEINONYCHUS
© 2015 PAIZO INC.



SM 38
DINOSAUR, DEINONYCHUS
© 2015 PAIZO INC.



SM 39
DOLPHIN
© 2015 PAIZO INC.



SM 39
DOLPHIN
© 2015 PAIZO INC.



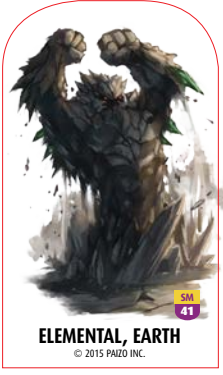
SM 40
ELEMENTAL, AIR
© 2015 PAIZO INC.



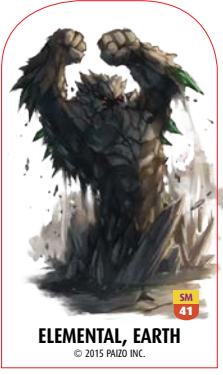
SM 40
ELEMENTAL, AIR
© 2015 PAIZO INC.



SM 40
ELEMENTAL, AIR
© 2015 PAIZO INC.



SM 41
ELEMENTAL, EARTH
© 2015 PAIZO INC.



SM 41
ELEMENTAL, EARTH
© 2015 PAIZO INC.



SM 41
ELEMENTAL, EARTH
© 2015 PAIZO INC.



SM 42
ELEMENTAL, FIRE
© 2015 PAIZO INC.



SM 42
ELEMENTAL, FIRE
© 2015 PAIZO INC.



SM 42
ELEMENTAL, FIRE
© 2015 PAIZO INC.



SM 43
ELEMENTAL, WATER
© 2015 PAIZO INC.



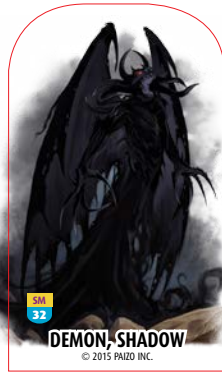
SM 59
APE, GORILLA
© 2015 PAIZO INC.



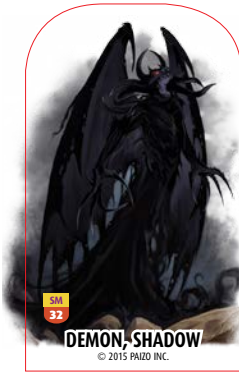
DEMON, SUCCUBUS
© 2015 PAIZO INC.



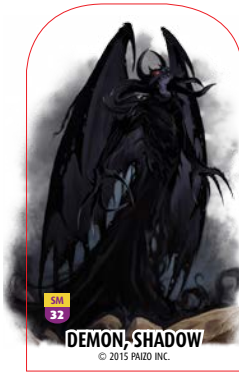
DEMON, SUCCUBUS
© 2015 PAIZO INC.



DEMON, SHADOW
© 2015 PAIZO INC.



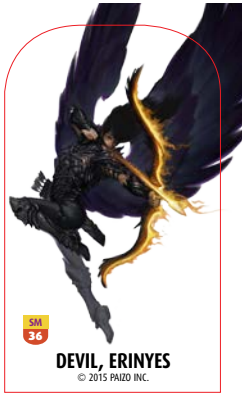
DEMON, SHADOW
© 2015 PAIZO INC.



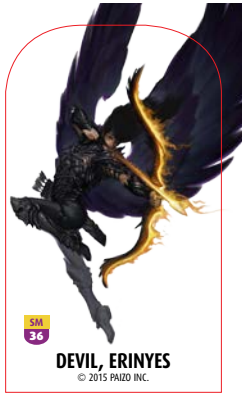
DEMON, SHADOW
© 2015 PAIZO INC.



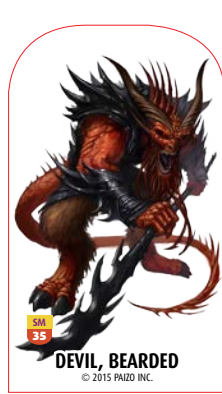
DEMON, BABAU
© 2015 PAIZO INC.



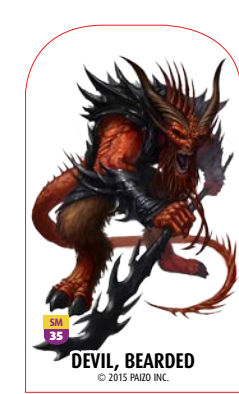
DEVIL, ERINYES
© 2015 PAIZO INC.



DEVIL, ERINYES
© 2015 PAIZO INC.



DEVIL, BEARDED
© 2015 PAIZO INC.



DEVIL, BEARDED
© 2015 PAIZO INC.



DEVIL, BARBED
© 2015 PAIZO INC.



DEVIL, BARBED
© 2015 PAIZO INC.



DOLPHIN
© 2015 PAIZO INC.



DOLPHIN
© 2015 PAIZO INC.



DINOSAUR, DEINONYCHUS
© 2015 PAIZO INC.



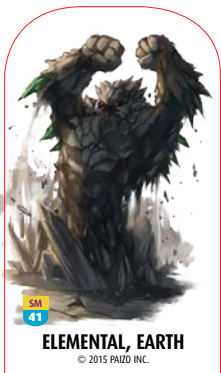
DINOSAUR, DEINONYCHUS
© 2015 PAIZO INC.



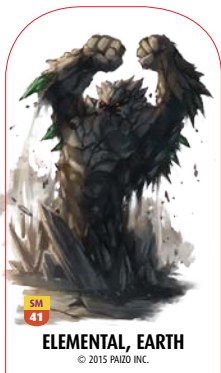
DEVIL, LEMURE
© 2015 PAIZO INC.



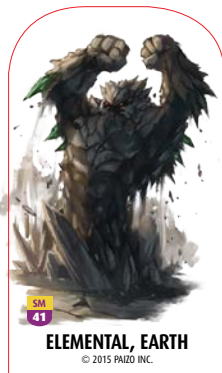
DEVIL, LEMURE
© 2015 PAIZO INC.



ELEMENTAL, EARTH
© 2015 PAIZO INC.



ELEMENTAL, EARTH
© 2015 PAIZO INC.



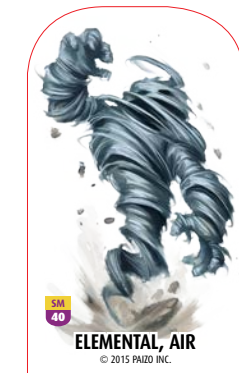
ELEMENTAL, EARTH
© 2015 PAIZO INC.



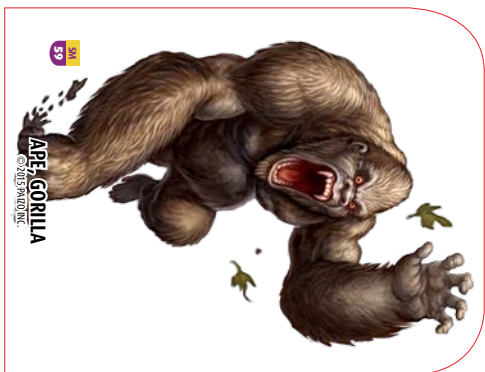
ELEMENTAL, AIR
© 2015 PAIZO INC.



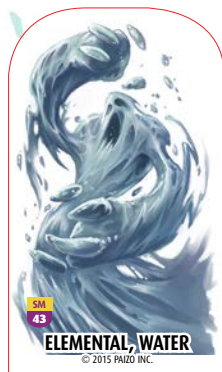
ELEMENTAL, AIR
© 2015 PAIZO INC.



ELEMENTAL, AIR
© 2015 PAIZO INC.



APE, GORILLA
© 2015 PAIZO INC.



ELEMENTAL, WATER
© 2015 PAIZO INC.



ELEMENTAL, FIRE
© 2015 PAIZO INC.



ELEMENTAL, FIRE
© 2015 PAIZO INC.



ELEMENTAL, FIRE
© 2015 PAIZO INC.



ELEMENTAL, WATER
© 2015 PAIZO INC.



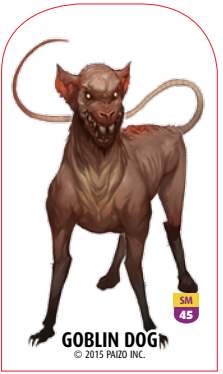
ELEMENTAL, WATER
© 2015 PAIZO INC.



FROG, GIANT
© 2015 PAIZO INC.



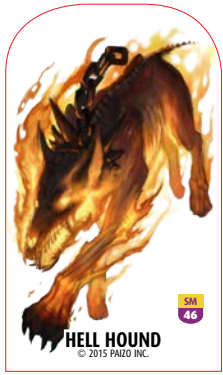
FROG, GIANT
© 2015 PAIZO INC.



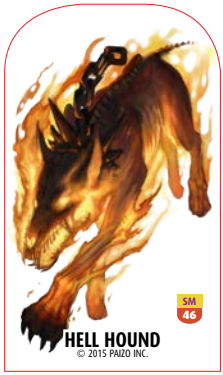
GOBLIN DOG
© 2015 PAIZO INC.



GOBLIN DOG
© 2015 PAIZO INC.



HELL HOUND
© 2015 PAIZO INC.



HELL HOUND
© 2015 PAIZO INC.



HORSE, PONY
© 2015 PAIZO INC.



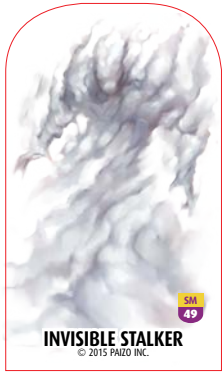
HORSE, PONY
© 2015 PAIZO INC.



HYENA
© 2015 PAIZO INC.



HYENA
© 2015 PAIZO INC.



INVISIBLE STALKER
© 2015 PAIZO INC.



INVISIBLE STALKER
© 2015 PAIZO INC.



KYTON
© 2015 PAIZO INC.



KYTON
© 2015 PAIZO INC.



LIZARD, MONITOR
© 2015 PAIZO INC.



LIZARD, MONITOR
© 2015 PAIZO INC.



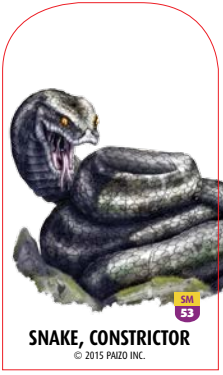
LIZARD, MONITOR
© 2015 PAIZO INC.



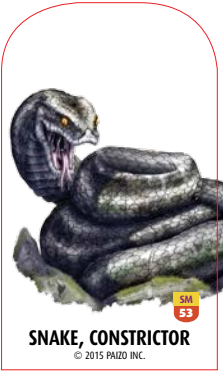
SALAMANDER
© 2015 PAIZO INC.



SALAMANDER
© 2015 PAIZO INC.



SNAKE, CONSTRICTOR
© 2015 PAIZO INC.



SNAKE, CONSTRICTOR
© 2015 PAIZO INC.



SPIDER, GIANT
© 2015 PAIZO INC.



SPIDER, GIANT
© 2015 PAIZO INC.



SQUID
© 2015 PAIZO INC.



SQUID
© 2015 PAIZO INC.

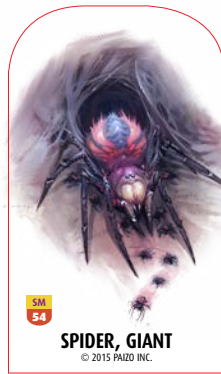
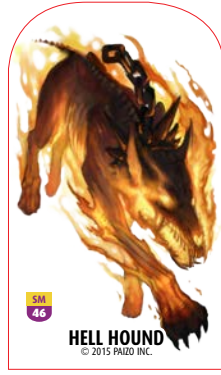
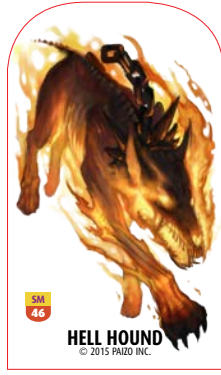
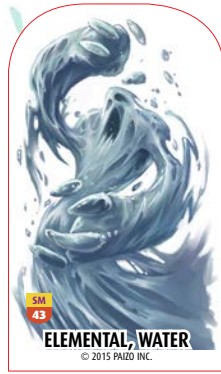
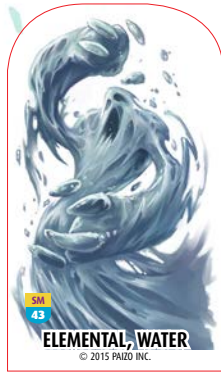


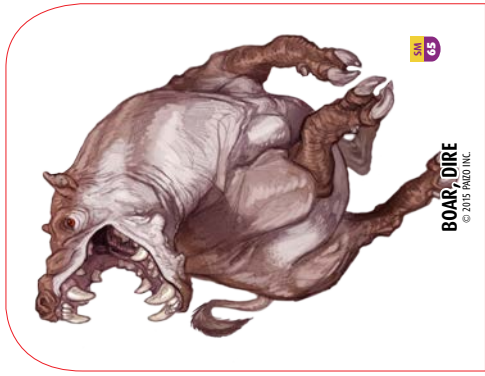
WOLF
© 2015 PAIZO INC.



60

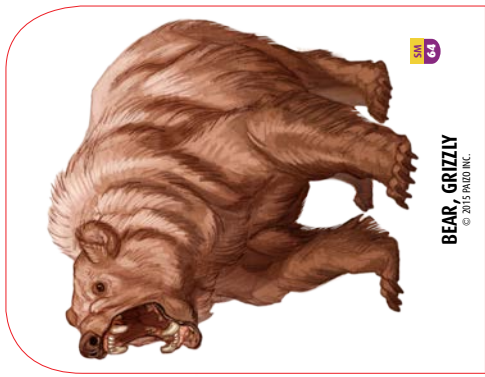
APE, DIRE
© 2015 PAIZO INC.





SM 65

BOAR, DIRE
© 2015 PAIJO INC.



SM 64

BEAR, GRIZZLY
© 2015 PAIJO INC.



SM 63

BEAR, DIRE
© 2015 PAIJO INC.



SM 62

BAT, DIRE
© 2015 PAIJO INC.



SM 61

AZATA, LILLEND
© 2015 PAIJO INC.



SM 69

DEVIL, BONE
© 2015 PAIJO INC.



SM 68

DEMON, VROCK
© 2015 PAIJO INC.



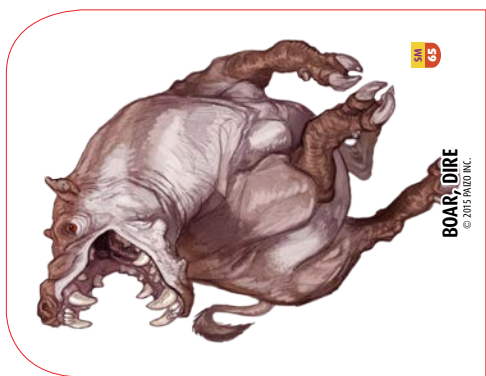
SM 67

DEMON, HEZROU
© 2015 PAIJO INC.



SM 66

CROCODILE
© 2015 PAIJO INC.



SM 65

BOAR, DIRE
© 2015 PAIJO INC.



SM 74

ELEMENTAL, EARTH
© 2015 PAIJO INC.



SM 73

ELEMENTAL, AIR
© 2015 PAIJO INC.



SM 72

EEL, GIANT MORAY
© 2015 PAIJO INC.



SM 71

DINOSAUR, PTERANODON
© 2015 PAIJO INC.



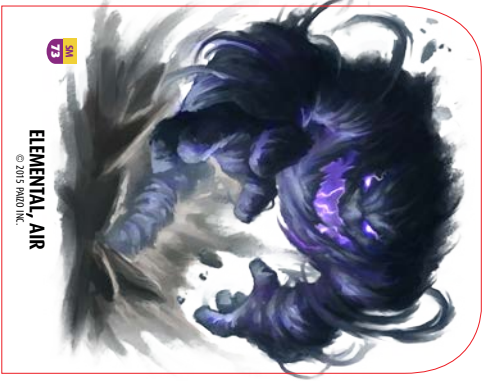
SM 70

DEVIL, ICE
© 2015 PAIJO INC.



SM 76

ELEMENTAL, EARTH
© 2015 PANDU INC.



SM 73

ELEMENTAL, AIR
© 2015 PANDU INC.



SM 72

EEL, GIANT MORAY
© 2015 PANDU INC.



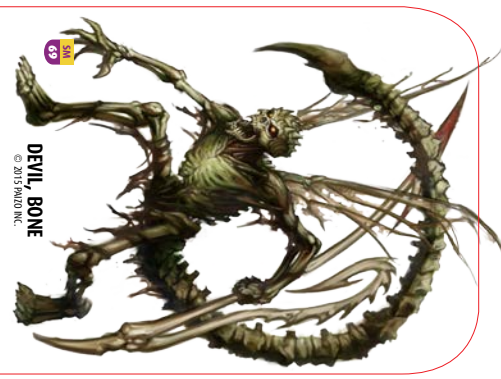
SM 71

DINOSAUR, PTERANODON
© 2015 PANDU INC.



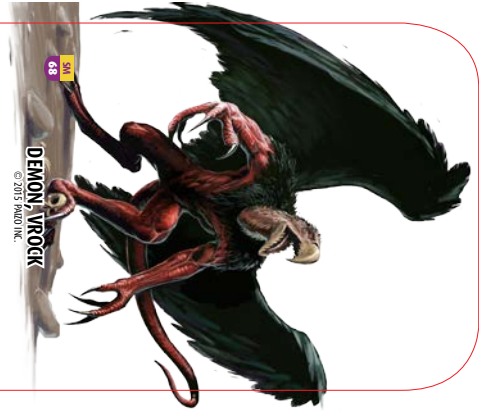
SM 70

DEVIL, ICE
© 2015 PANDU INC.



SM 69

DEVIL, BONE
© 2015 PANDU INC.



SM 68

DEVIL, VYROCK
© 2015 PANDU INC.



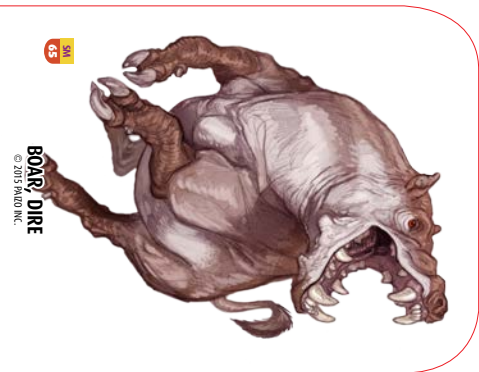
SM 67

DEVIL, HEZROU
© 2015 PANDU INC.



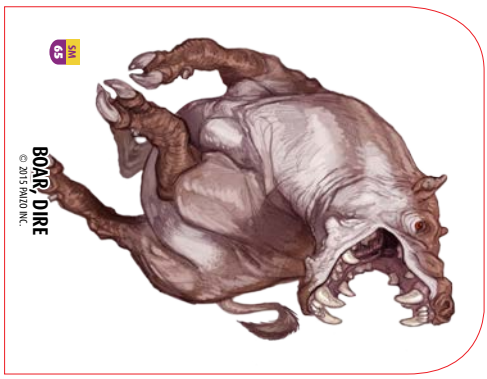
SM 66

CROCODILE
© 2015 PANDU INC.



SM 65

BOAR, DIRE
© 2015 PANDU INC.



SM 65

BOAR, DIRE
© 2015 PANDU INC.



SM 64

BEAR, GRIZZLY
© 2015 PANDU INC.



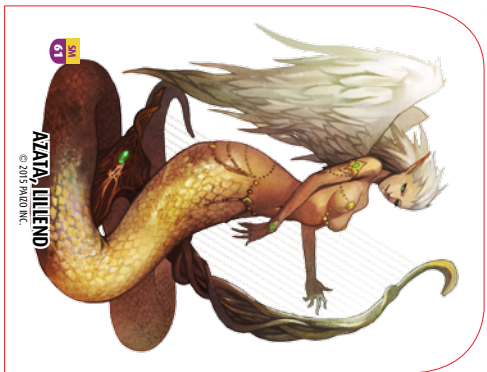
SM 63

BEAR, DIRE
© 2015 PANDU INC.



SM 62

BAT, DIRE
© 2015 PANDU INC.



SM 61

AZAYA, LILUEND
© 2015 PANDU INC.



SM

79

HORSE

© 2015 PALDO INC.



SM

84

RHINOCEROS WOOLLY

© 2015 PALDO INC.



SM

89

WOLF, DIRE

© 2015 PALDO INC.



SM

78

HERD ANIMAL, BISON

© 2015 PALDO INC.



SM

83

RHINOCEROS

© 2015 PALDO INC.



SM

88

WASP, GIANT

© 2015 PALDO INC.



SM

77

HERD ANIMAL, AUROCHS

© 2015 PALDO INC.

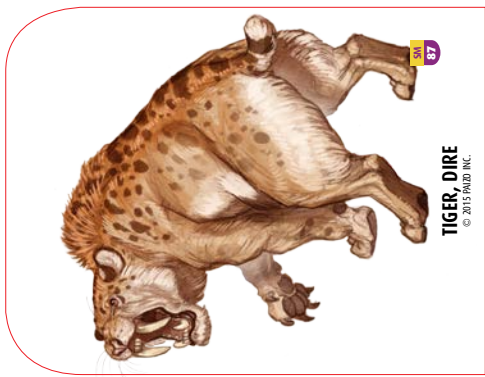


SM

82

OCTOPUS, GIANT

© 2015 PALDO INC.



SM

87

TIGER, DIRE

© 2015 PALDO INC.



SM

76

ELEMENTAL, WATER

© 2015 PALDO INC.



SM

81

LION, DIRE

© 2015 PALDO INC.



SM

86

SHARK

© 2015 PALDO INC.

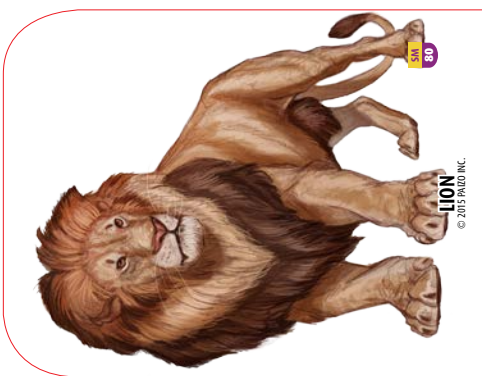


SM

75

ELEMENTAL, FIRE

© 2015 PALDO INC.



SM

80

LION

© 2015 PALDO INC.



SM

85

SCORPION, GIANT

© 2015 PALDO INC.



84
54
WOLF, DIRE
© 2015 PANDORA INC.



84
54
RHINOCEROS, WOOLLY
© 2015 PANDORA INC.



79
54
HORSE
© 2015 PANDORA INC.



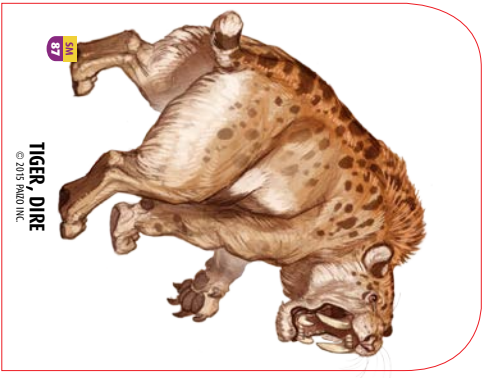
88
54
WASP, GIANT
© 2015 PANDORA INC.



83
50
RHINOCEROS
© 2015 PANDORA INC.



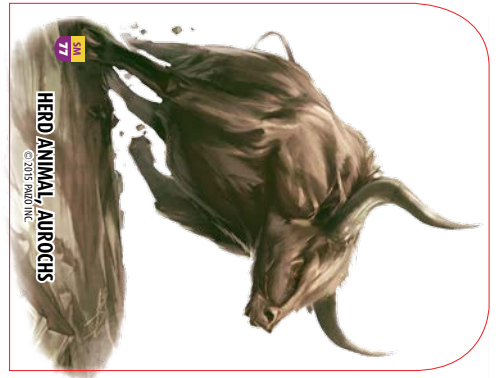
78
50
HERD ANIMAL, BISON
© 2015 PANDORA INC.



87
51
TIGER, DIRE
© 2015 PANDORA INC.



82
54
OCTOPUS, GIANT
© 2015 PANDORA INC.



77
54
HERD ANIMAL, AUROCHS
© 2015 PANDORA INC.



86
54
SHARK
© 2015 PANDORA INC.



81
50
LION, DIRE
© 2015 PANDORA INC.



76
54
ELEMENTAL, WATER
© 2015 PANDORA INC.



85
54
SCORPION, GIANT
© 2015 PANDORA INC.



80
50
LION
© 2015 PANDORA INC.

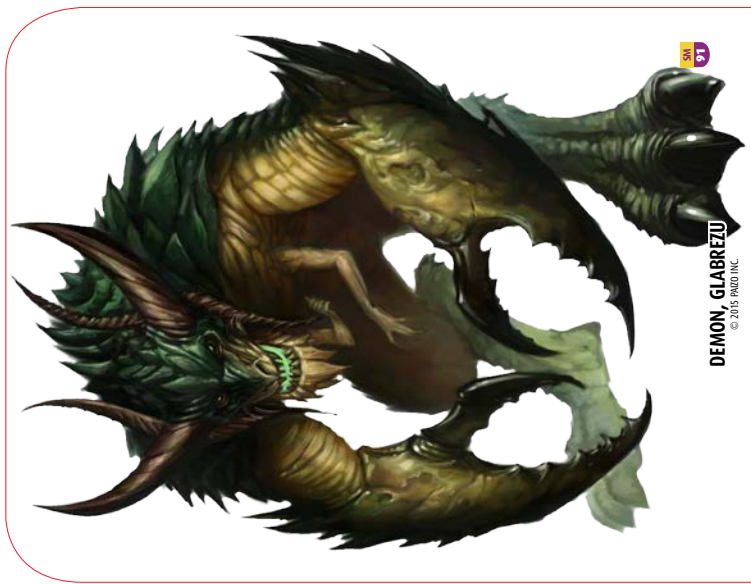


75
54
ELEMENTAL, FIRE
© 2015 PANDORA INC.



SM 92

DEMON, NALFESHNEE
© 2015 PAIZO INC.



SM 91

DEMON, GLABREZU
© 2015 PAIZO INC.



SM 90

BEBLUTH
© 2015 PAIZO INC.



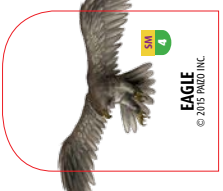
SM 4

EAGLE
© 2015 PAIZO INC.



SM 4

EAGLE
© 2015 PAIZO INC.



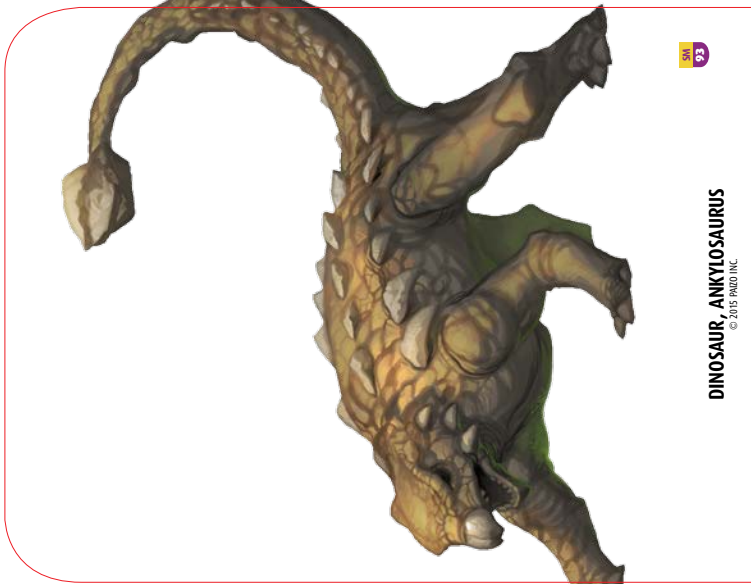
SM 7

EAGLE
© 2015 PAIZO INC.



SM 94

DINOSAUR, ELASMOSAURUS
© 2015 PAIZO INC.



SM 93

DINOSAUR, ANKYOSAURUS
© 2015 PAIZO INC.



SM 6

ELEMENTAL, AIR
© 2015 PAIZO INC.



SM 6

ELEMENTAL, AIR
© 2015 PAIZO INC.



SM 5

EEL, ELECTRIC
© 2015 PAIZO INC.



SM 5

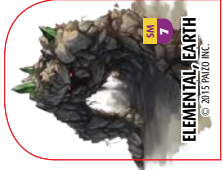
EEL, ELECTRIC
© 2015 PAIZO INC.



WOLF
© 2015 PAIZO INC.



WOLVERINE
© 2015 PAIZO INC.



SM 7

ELEMENTAL, EARTH
© 2015 PAIZO INC.



SM 7

ELEMENTAL, EARTH
© 2015 PAIZO INC.



SM 6

ELEMENTAL, AIR
© 2015 PAIZO INC.



SM 7

ELEMENTAL, EARTH
© 2015 PAIZO INC.

SM 92

DINOSAUR, FLASMOSAURUS
© 2015 PAZLO INC.



SM 92

DEMON, MALESHINEE
© 2015 PAZLO INC.



SM 97

DEMON, GLABREZU
© 2015 PAZLO INC.



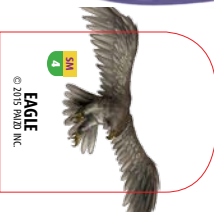
SM 90

BEBLUTH
© 2015 PAZLO INC.



SM 7

EAGLE
© 2015 PAZLO INC.



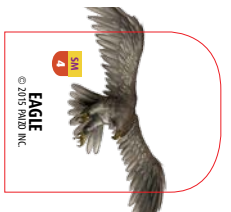
SM 8

EAGLE
© 2015 PAZLO INC.



SM 4

EAGLE
© 2015 PAZLO INC.



SM 93

DINOSAUR, ANKYLOSOSAURUS
© 2015 PAZLO INC.



SM 6
ELEMENTAL, AIR
© 2015 PAZLO INC.



SM 6
ELEMENTAL, AIR
© 2015 PAZLO INC.



SM 5
ELEMENTAL, ELECTRIC
© 2015 PAZLO INC.



SM 5
ELEMENTAL, ELECTRIC
© 2015 PAZLO INC.



SM 57

WOLVERINE
© 2015 PAZLO INC.

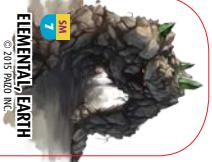


SM 56

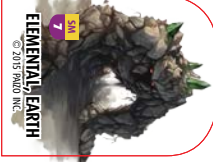
WOLF
© 2015 PAZLO INC.



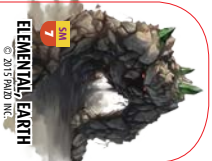
SM 7
ELEMENTAL, EARTH
© 2015 PAZLO INC.



SM 7
ELEMENTAL, EARTH
© 2015 PAZLO INC.

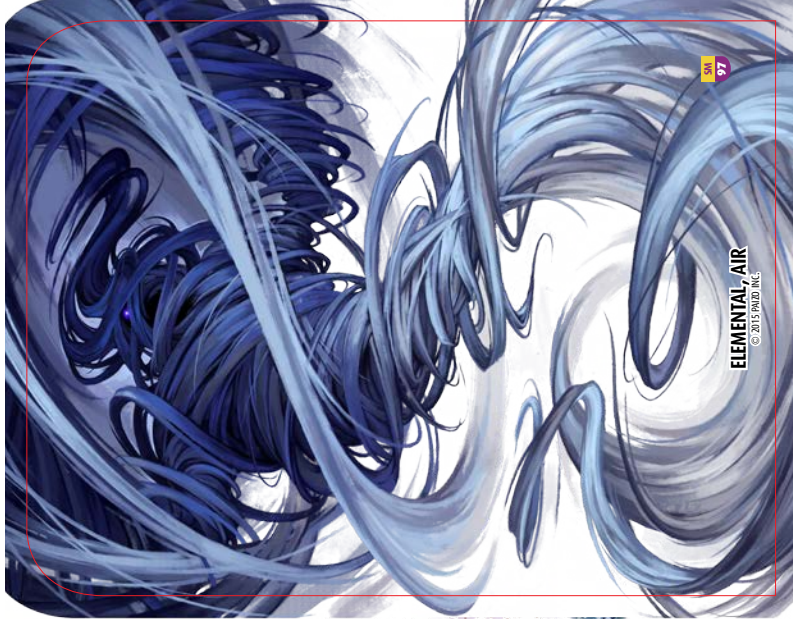


SM 7
ELEMENTAL, EARTH
© 2015 PAZLO INC.



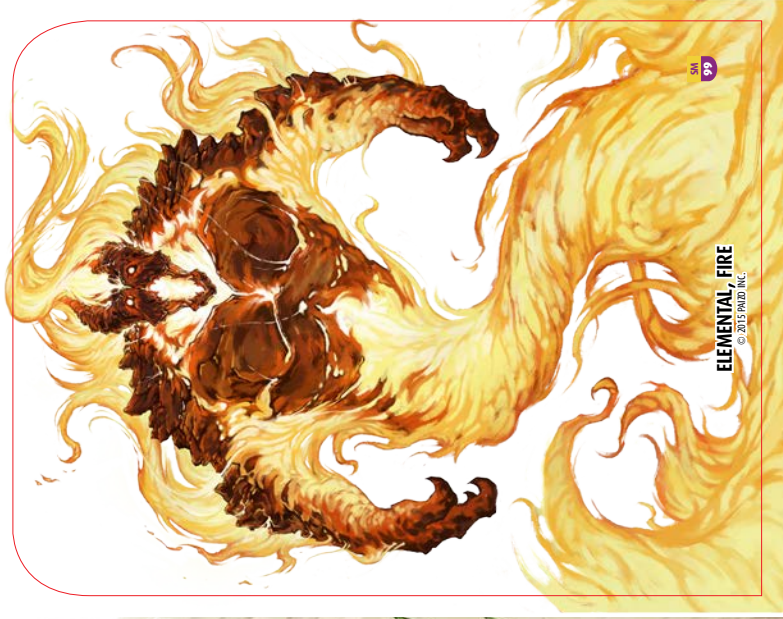
SM 6
ELEMENTAL, AIR
© 2015 PAZLO INC.





SM 97

ELEMENTAL AIR
© 2015 PAIZO INC.



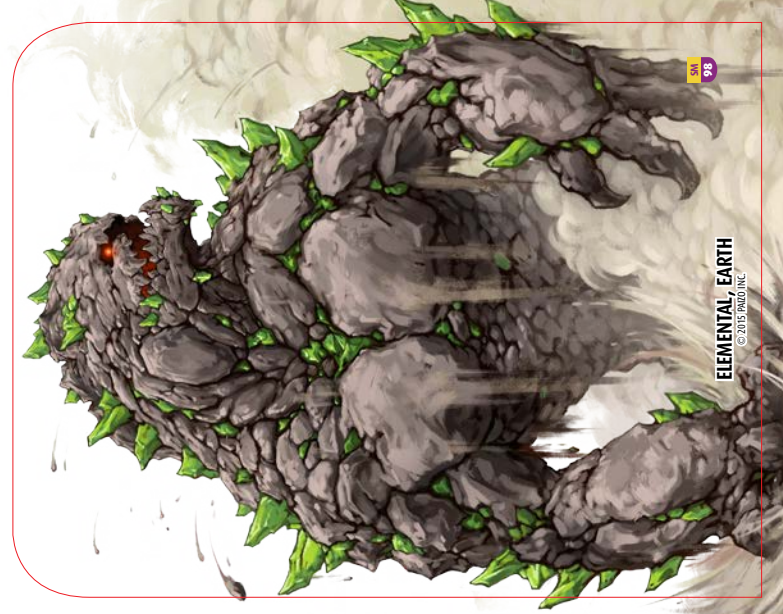
SM 99

ELEMENTAL FIRE
© 2015 PAIZO INC.



SM 96

DOLPHIN, ORCA
© 2015 PAIZO INC.



SM 98

ELEMENTAL EARTH
© 2015 PAIZO INC.



SM 95

DINOSAUR, TRICERATOPS
© 2015 PAIZO INC.



SM 10

FROG POISON
© 2015 PAIZO INC.



SM 9

ELEMENTAL WATER
© 2015 PAIZO INC.



SM 9

ELEMENTAL WATER
© 2015 PAIZO INC.



SM 57

WOLVERINE
© 2015 PAIZO INC.



SM 57

WOLVERINE
© 2015 PAIZO INC.



SM 11

MEPHIT, FIRE
© 2015 PAIZO INC.



SM 12

MEPHIT, ICE
© 2015 PAIZO INC.



SM 8

ELEMENTAL FIRE
© 2015 PAIZO INC.



SM 8

ELEMENTAL FIRE
© 2015 PAIZO INC.



SM 8

ELEMENTAL FIRE
© 2015 PAIZO INC.



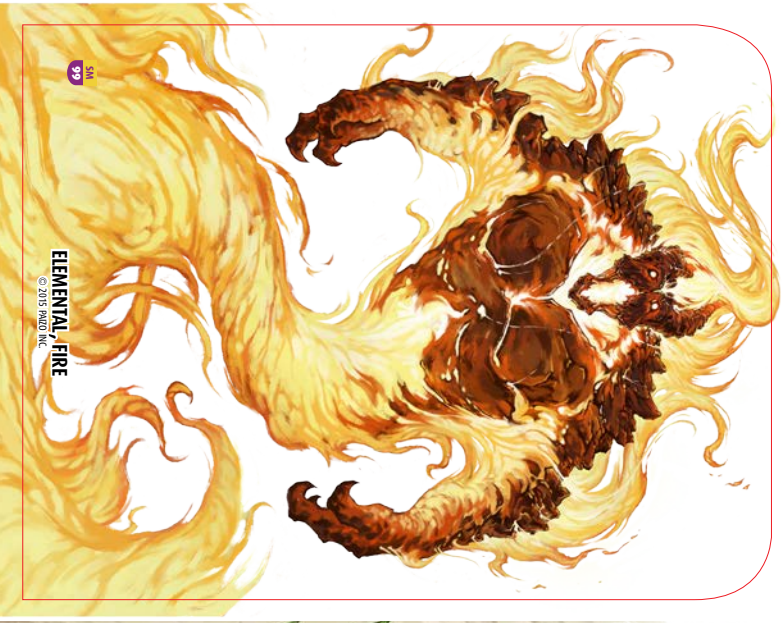
SM 10

FROG POISON
© 2015 PAIZO INC.



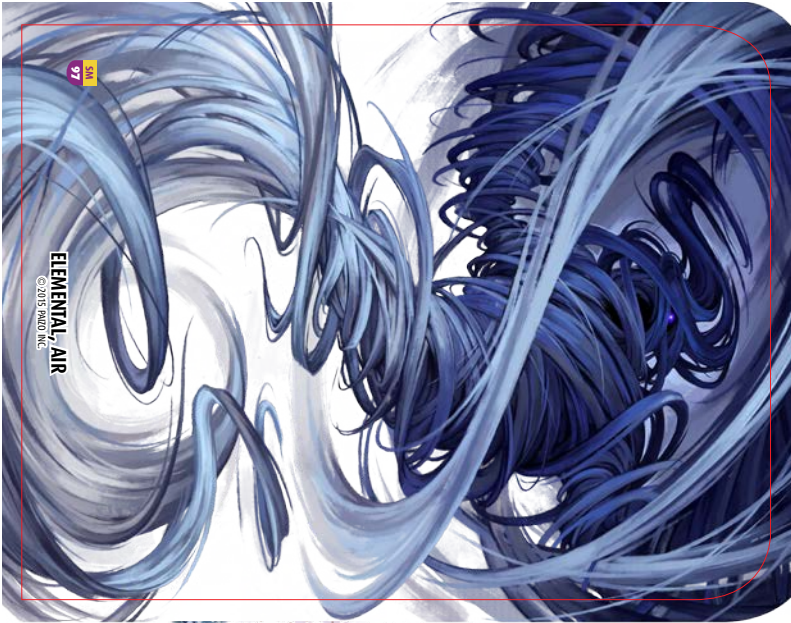
SM 11

MEPHIT, FIRE
© 2015 PAIZO INC.



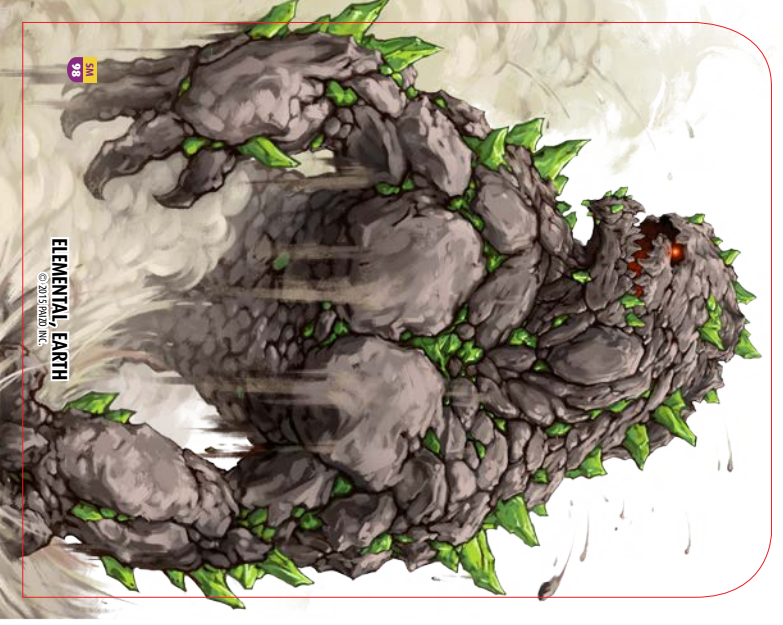
SM 99

ELEMENTAL FIRE
© 2015 PALDO INC.



SM 97

ELEMENTAL AIR
© 2015 PALDO INC.



SM 98

ELEMENTAL EARTH
© 2015 PALDO INC.



SM 96

DOLPHIN, ORCA
© 2015 PALDO INC.



SM 57

WOLVERINE
© 2015 PALDO INC.



SM 57

WOLVERINE
© 2015 PALDO INC.



SM 10

FOG, POISON
© 2015 PALDO INC.



SM 9

ELEMENTAL WATER
© 2015 PALDO INC.



SM 95

DINOSAUR, TRICERATOPS
© 2015 PALDO INC.



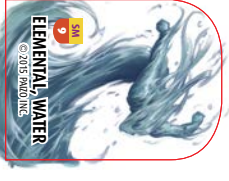
SM 72

MEPHIT, ICE
© 2015 PALDO INC.



SM 71

MEPHIT, FIRE
© 2015 PALDO INC.



SM 9

ELEMENTAL WATER
© 2015 PALDO INC.



SM 71

MEPHIT, FIRE
© 2015 PALDO INC.



SM 10

FOG, POISON
© 2015 PALDO INC.



SM 9

ELEMENTAL WATER
© 2015 PALDO INC.



SM 8

ELEMENTAL FIRE
© 2015 PALDO INC.



SM 8

ELEMENTAL FIRE
© 2015 PALDO INC.



SM 8

ELEMENTAL FIRE
© 2015 PALDO INC.



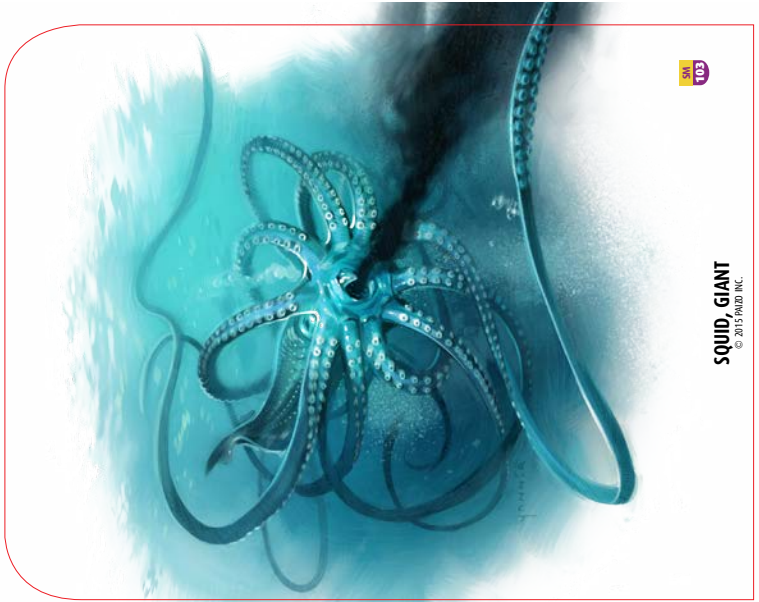
SM 101

ELEPHANT
© 2015 PAIZO INC.



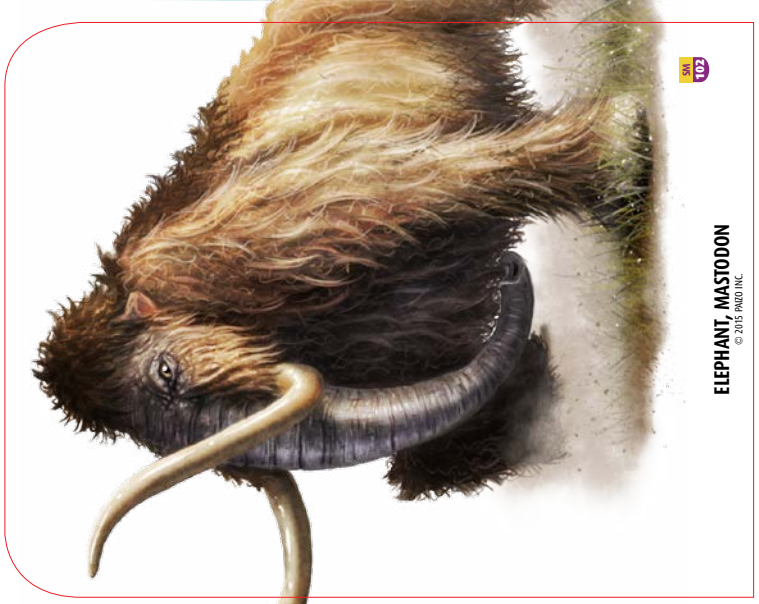
SM 101

ELEPHANT
© 2015 PAIZO INC.



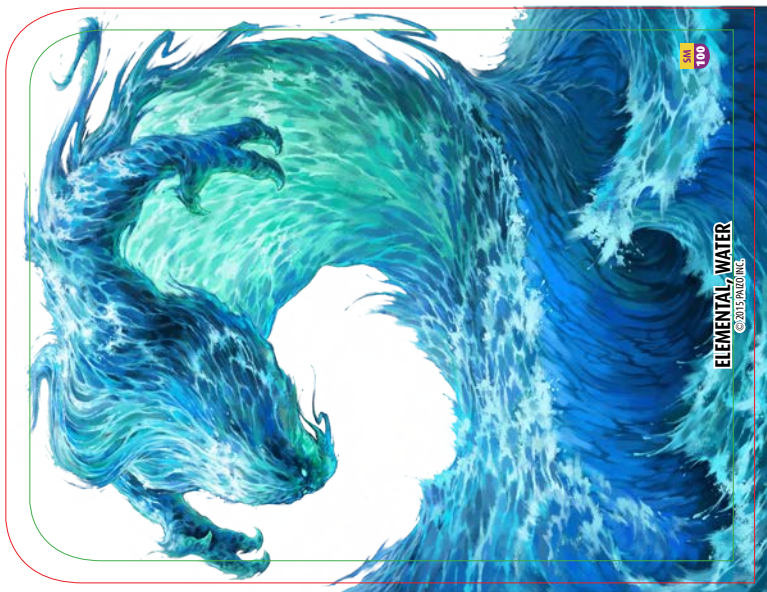
SM 103

SQUID, GIANT
© 2015 PAIZO INC.



SM 102

ELEPHANT, MASTODON
© 2015 PAIZO INC.



SM 100

ELEMENTAL WATER
© 2015 PAIZO INC.



SM 12

MEPHITIS, ICE
© 2015 PAIZO INC.



SM 13

MEPHITIS, OOZE
© 2015 PAIZO INC.



SM 13

MEPHITIS, OOZE
© 2015 PAIZO INC.



SM 15

OCTOPUS
© 2015 PAIZO INC.



SM 15

OCTOPUS
© 2015 PAIZO INC.



SM 14

MEPHITIS, WATER
© 2015 PAIZO INC.



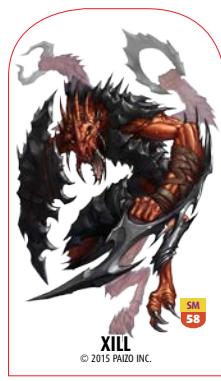
SM 14

MEPHITIS, WATER
© 2015 PAIZO INC.



SM 58

KILL
© 2015 PAIZO INC.



SM 58

KILL
© 2015 PAIZO INC.



SM 16

RAT, DIRE
© 2015 PAIZO INC.



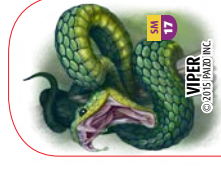
SM 16

RAT, DIRE
© 2015 PAIZO INC.



SM 17

VIPER
© 2015 PAIZO INC.



SM 17

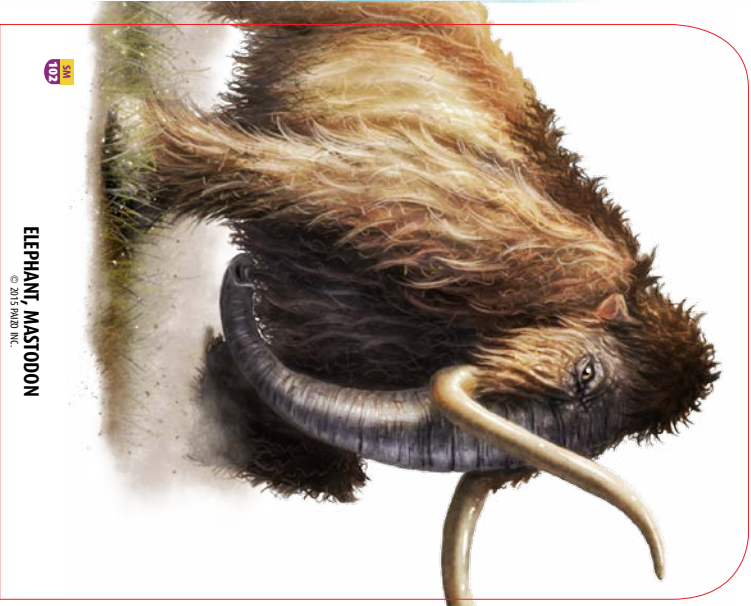
VIPER
© 2015 PAIZO INC.



SQUID, GIANT
© 2015 PAZLO INC.



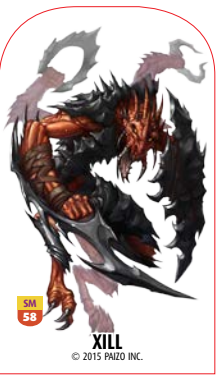
ELEPHANT
© 2015 PAZLO INC.



ELEPHANT, MASTODON
© 2015 PAZLO INC.



ELEPHANT
© 2015 PAZLO INC.



XILL
© 2015 PAZLO INC.



XILL
© 2015 PAZLO INC.



OCTOPUS
© 2015 PAZLO INC.



OCTOPUS
© 2015 PAZLO INC.



VIPER
© 2015 PAZLO INC.



RAI, DIRE
© 2015 PAZLO INC.



MERPHIT, WATER
© 2015 PAZLO INC.



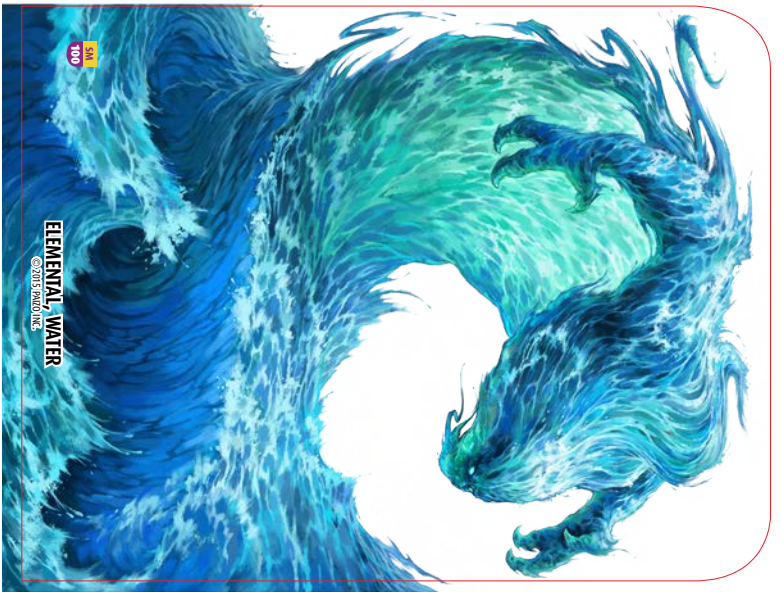
VIPER
© 2015 PAZLO INC.



RAI, DIRE
© 2015 PAZLO INC.



MERPHIT, WATER
© 2015 PAZLO INC.



ELEMENTAL, WATER
© 2015 PAZLO INC.



MERPHIT, OOZE
© 2015 PAZLO INC.



MERPHIT, OOZE
© 2015 PAZLO INC.



MERPHIT, ICE
© 2015 PAZLO INC.

Pawn Artists: Eric Belisle, Dmitry Burmak, Matt Dixon, Sally Gottschalk, Andrew Hou, Michael Jaecks, Brynn Metheney, Kate Pfeilschiefter, Mike Sass, Alex Shim, Dean Spencer, Florian Stitz, Adam Vehige, Tyler Walpole, Ben Wootten, Kevin Yan, and Kieran Yanner

Product Identity: The following items are hereby identified as Product Identity, as defined in the Open Game License, version 1.0a, Section 1 (e), and are not Open Content: All trademarks, registered trademarks, proper names (characters, deities, etc.), dialogue, plots, storylines, locations, characters, artwork, and trade dress. (Elements that have been previously designated as Open Game Content or are in the public domain are not included in this declaration).

Open Content: Except for material designated as Product Identity (see above), the game mechanics of this Paizo game product are Open Game Content, as defined in the Open Game License, version 1.0a, Section 1(d). No portion of this work other than the material designated as Open Game Content may be reproduced in any form without written permission.

OPEN GAME LICENSE VERSION 1.0A

The following text is the property of Wizards of the Coast, Inc. and is Copyright 2000 Wizards of the Coast, Inc ("Wizards"). All Rights Reserved.

1. Definitions: (a) "Contributors" means the copyright and/or trademark owners who have contributed Open Game Content; (b) "Derivative Material" means copyrighted material including derivative works and translations (including into other computer languages), potation, modification, correction, addition, extension, upgrade, improvement, compilation, abridgment or other form in which an existing work may be recast, transformed or adapted; (c) "Distribute" means to reproduce, license, rent, lease, sell, broadcast, publicly display, transmit or otherwise distribute; (d) "Open Game Content" means the game mechanic and includes the methods, procedures, processes and routines to the extent such content does not embody the Product Identity and is an enhancement over the prior art and any additional content clearly identified as Open Game Content by the Contributor, and means any work covered by this License, including translations and derivative works under copyright law, but specifically excludes Product Identity. (e) "Product Identity" means product and product line names, logos and identifying marks including trade dress; artifacts, creatures, characters, stories, storylines, plots, thematic elements, dialogue, incidents, language, artwork, symbols, designs, depictions, likenesses, formats, poses, concepts, themes and graphic, photographic and other visual or audio representations; names and descriptions of characters, spells, enchantments, personalities, teams, personas, likenesses and special abilities; places, locations, environments, creatures, equipment, magical or supernatural abilities or effects, logos, symbols, or graphic designs; and any other trademark or registered trademark clearly identified as Product identity by the owner of the Product Identity, and which specifically excludes the Open Game Content; (f) "Trademark" means the logos, names, mark, sign, motto, designs that are used by a Contributor to identify itself or its products or the associated products contributed to the Open Game License by the Contributor (g) "Use", "Used" or "Using" means to use, Distribute, copy, edit, format, modify, translate and otherwise create Derivative Material of Open Game Content. (h) "You" or "Your" means the licensee in terms of this agreement.

2. The License: This License applies to any Open Game Content that contains a notice indicating that the Open Game Content may only be Used under and in terms of this License. You must affix such a notice to any Open Game Content that you Use. No terms may be added to or subtracted from this License except as described by the License itself. No other terms or conditions may be applied to any Open Game Content distributed using this License.

3. Offer and Acceptance: By Using the Open Game Content You indicate Your acceptance of the terms of this License.

4. Grant and Consideration: In consideration for agreeing to use this License, the Contributors grant You a perpetual, worldwide, royalty-free, non-exclusive license with the exact terms of this License to Use, the Open Game Content.

5. Representation of Authority to Contribute: If You are contributing original material as Open Game Content, You represent that Your Contributions are Your original creation and/or You have sufficient rights to grant the rights conveyed by this License.

6. Notice of License Copyright: You must update the COPYRIGHT NOTICE portion of this License to include the exact text of the COPYRIGHT NOTICE of any Open Game Content You are copying, modifying or distributing, and You must add the title, the copyright date, and the copyright holder's name to the COPYRIGHT NOTICE of any original Open Game Content you Distribute.

7. Use of Product Identity: You agree not to Use any Product Identity, including as an indication as to compatibility, except as expressly licensed in another, independent Agreement with the owner of each element of that Product Identity. You agree not to indicate compatibility or co-adaptability with any Trademark or Registered Trademark in conjunction with a work containing Open Game Content except as expressly licensed in another, independent Agreement with the owner of such Trademark or Registered Trademark. The use of any Product Identity in Open Game Content does not constitute a challenge to the ownership of that Product Identity. The owner of any Product Identity used in Open Game Content shall retain all rights, title and interest in and to that Product Identity.

8. Identification: If you distribute Open Game Content You must clearly indicate which portions of the work that you are distributing are Open Game Content.

9. Updating the License: Wizards or its designated Agents may publish updated versions of this License. You may use any authorized version of this License to copy, modify and distribute any Open Game Content originally distributed under any version of this License.

10. Copy of this License: You MUST include a copy of this License with every copy of the Open Game Content You distribute.

11. Use of Contributor Credits: You may not market or advertise the Open Game Content using the name of any Contributor unless You have written permission from the Contributor to do so.

12. Inability to Comply: If it is impossible for You to comply with any of the terms of this License with respect to some or all of the Open Game Content due to statute, judicial order, or governmental regulation then You may not Use any Open Game Material so affected.

13. Termination: This License will terminate automatically if You fail to comply with all terms herein and fail to cure such breach within 30 days of becoming aware of the breach. All sublicenses shall survive the termination of this License.

14. Reformation: If any provision of this License is held to be unenforceable, such provision shall be reformed only to the extent necessary to make it enforceable.

15. COPYRIGHT NOTICE

Open Game License v 1.0a © 2000, Wizards of the Coast, Inc.

System Reference Document © 2000, Wizards of the Coast, Inc; Authors: Jonathan Tweet, Monte Cook, and Skip Williams, based on material by E. Gary Gygax and Dave Arneson.

Demon, Shadow from the Tome of Horrors Complete © 2011, Necromancer Games, Inc., published and distributed by Frog God Games; Author: Scott Greene, based on original material by Neville White.

Pathfinder Pawns: Summon Monster Pawn Collection © 2015, Paizo Inc.; Author: Rob McCreary.

PATHFINDER PAWNS™

SUMMON MONSTER PAWN COLLECTION



Summon legions of extraplanar creatures to your tabletop with this collection of more than 100 creature pawns for use with the Pathfinder Roleplaying Game or any tabletop fantasy roleplaying game! Printed on sturdy cardstock, each pawn contains a beautiful full-color image of a monster from the summon monster spell lists in the *Pathfinder Roleplaying Game Core Rulebook*. Each cardstock pawn slots into a size-appropriate plastic base from any of the *Pathfinder Pawns: Bestiary Box* collections, making them easy to mix with traditional metal or plastic miniatures. With multiple pawns for commonly summoned creatures, the *Summon Monster Pawn Collection* is the best way to ensure you've got the perfect monsters to conjure for every Pathfinder Roleplaying Game encounter!

Legions of summoned extraplanar creatures come to life on your tabletop! Each pawn has its own abbreviation and identification number for easy sorting. The *Summon Monster Pawn Collection* includes:

SMALL (AND SMALLER)

1. Archon, Lantern (4)
2. Demon, Dretch (2)
3. Dog (3)
4. Eagle (4)
5. Eel, Electric (2)
6. Elemental, Air (3)
7. Elemental, Earth (3)
8. Elemental, Fire (3)
9. Elemental, Water (3)
10. Frog, Poison (2)
11. Mephit, Fire (2)
12. Mephit, Ice (2)
13. Mephit, Ooze (2)
14. Mephit, Water (2)
15. Octopus (2)
16. Rat, Dire (2)
17. Viper (2)

MEDIUM

18. Angel, Astral Deva
19. Ant, Giant Drone (2)
20. Ant, Giant Soldier (2)

21. Ant, Giant Worker (2)
22. Archon, Hound (2)
23. Archon, Trumpet
24. Azata, Bralani (2)
25. Azata, Ghaele
26. Beetle, Fire (3)
27. Boar (2)
28. Cat, Cheetah (2)
29. Cat, Leopard (2)
30. Centipede, Giant (2)
31. Demon, Babau (2)
32. Demon, Shadow (3)
33. Demon, Succubus (2)
34. Devil, Barbed (2)
35. Devil, Bearded (2)
36. Devil, Erinyes (2)
37. Devil, Lemure (2)
38. Dinosaur, Deinonychus (2)
39. Dolphin (2)
40. Elemental, Air (3)
41. Elemental, Earth (3)
42. Elemental, Fire (3)

43. Elemental, Water (3)
44. Frog, Giant (2)
45. Goblin Dog (2)
46. Hell Hound (2)
47. Horse, Pony (2)
48. Hyena (2)
49. Invisible Stalker (2)
50. Kytton (2)
51. Lizard, Monitor (3)
52. Salamander (2)
53. Snake, Constrictor (2)
54. Spider, Giant (2)
55. Squid (2)
56. Wolf (2)
57. Wolverine (3)
58. Xill (2)

LARGE

59. Ape, Gorilla
60. Ape, Dire
61. Azata, Lillend
62. Bat, Dire
63. Bear, Dire

64. Bear, Grizzly
65. Boar, Dire (2)
66. Crocodile
67. Demon, Hezrou
68. Demon, Vrock
69. Devil, Bone
70. Devil, Ice
71. Dinosaur, Pteranodon
72. Eel, Giant Moray
73. Elemental, Air
74. Elemental, Earth
75. Elemental, Fire
76. Elemental, Water
77. Herd Animal, Aurochs
78. Herd Animal, Bison
79. Horse
80. Lion
81. Lion, Dire
82. Octopus, Giant
83. Rhinoceros
84. Rhinoceros, Woolly
85. Scorpion, Giant
86. Shark

87. Tiger, Dire
88. Wasp, Giant
89. Wolf, Dire

HUGE

90. Bebilith
91. Demon, Glabrezu
92. Demon, Nalfeshnee
93. Dinosaur, Ankylosaurus
94. Dinosaur, Elasmosaurus
95. Dinosaur, Triceratops
96. Dolphin, Orca
97. Elemental, Air
98. Elemental, Earth
99. Elemental, Fire
100. Elemental, Water
101. Elephant (2)
102. Elephant, Mastodon
103. Squid, Giant



Cover Artists: Sally Gottschalk, Brynn Metheny, and Kate Pfeilschiefer.

This product does not include bases. It is intended for use with the bases found in the *Pathfinder Pawns: Base Assortment* or *Pathfinder Pawns: Bestiary Box* collections.

paizo.com

PZ01017

Paizo, Paizo Inc., the Paizo golem logo, Pathfinder, and the Pathfinder logo are registered trademarks of Paizo Inc.; Pathfinder Pawns and Pathfinder Roleplaying Game are trademarks of Paizo Inc. Made in China.



WARNING:
Not suitable for children
under three years

Paizo Inc., 7120 185th Ave NE, Suite 120, Redmond, WA 98052

In Europe: Ulisses Medien & Spiel Distribution GmbH, Industriestr. 11, 65529 Waldems/Steinfischbach, Deutschland