

# **PATHFINDER** **MAP PACK™**

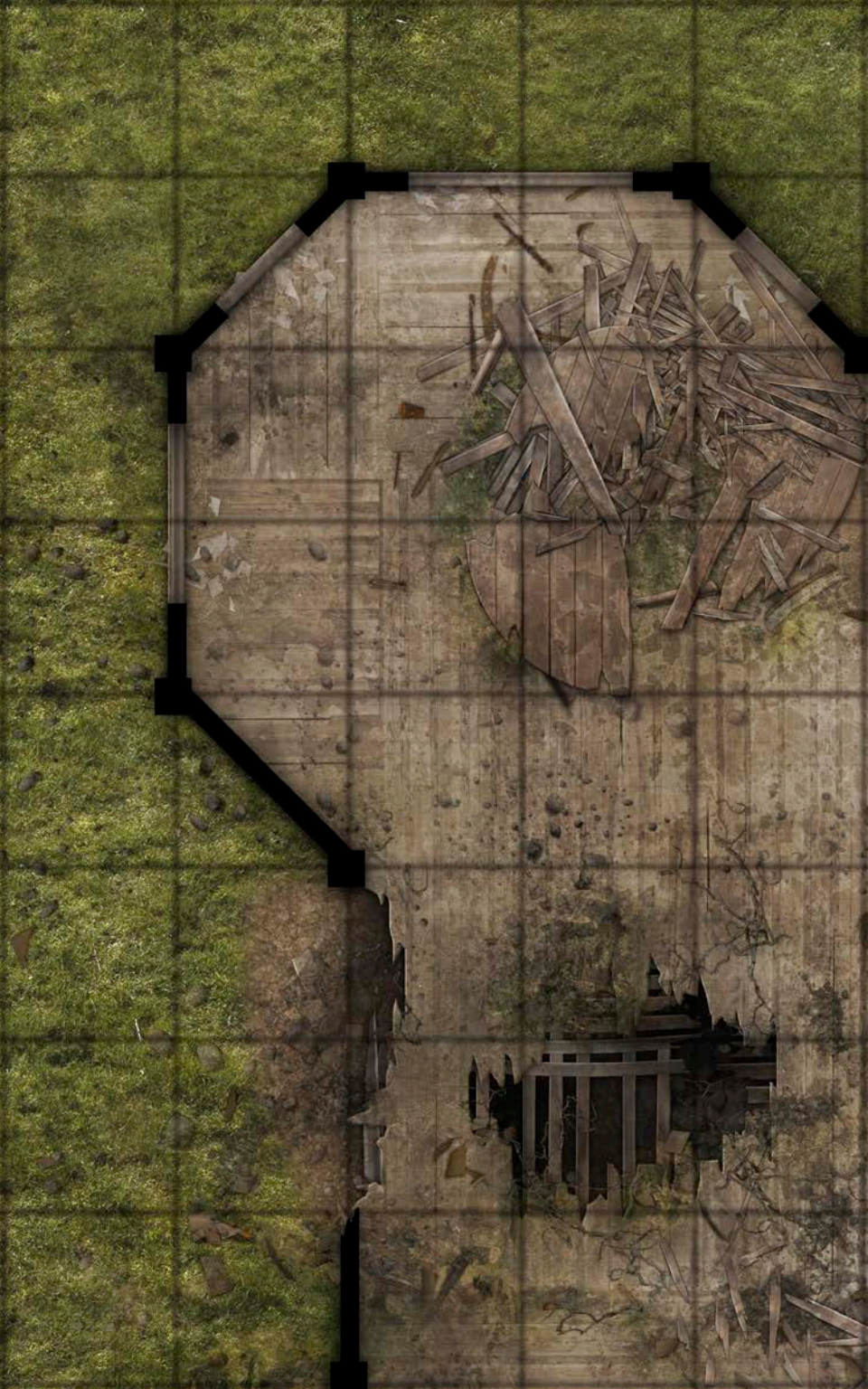


## **RUINED VILLAGE**

**CONTAINS 18 FULL-COLOR MAP TILES**

**Wet, Dry, and Permanent Markers Erase from the Tiles**





























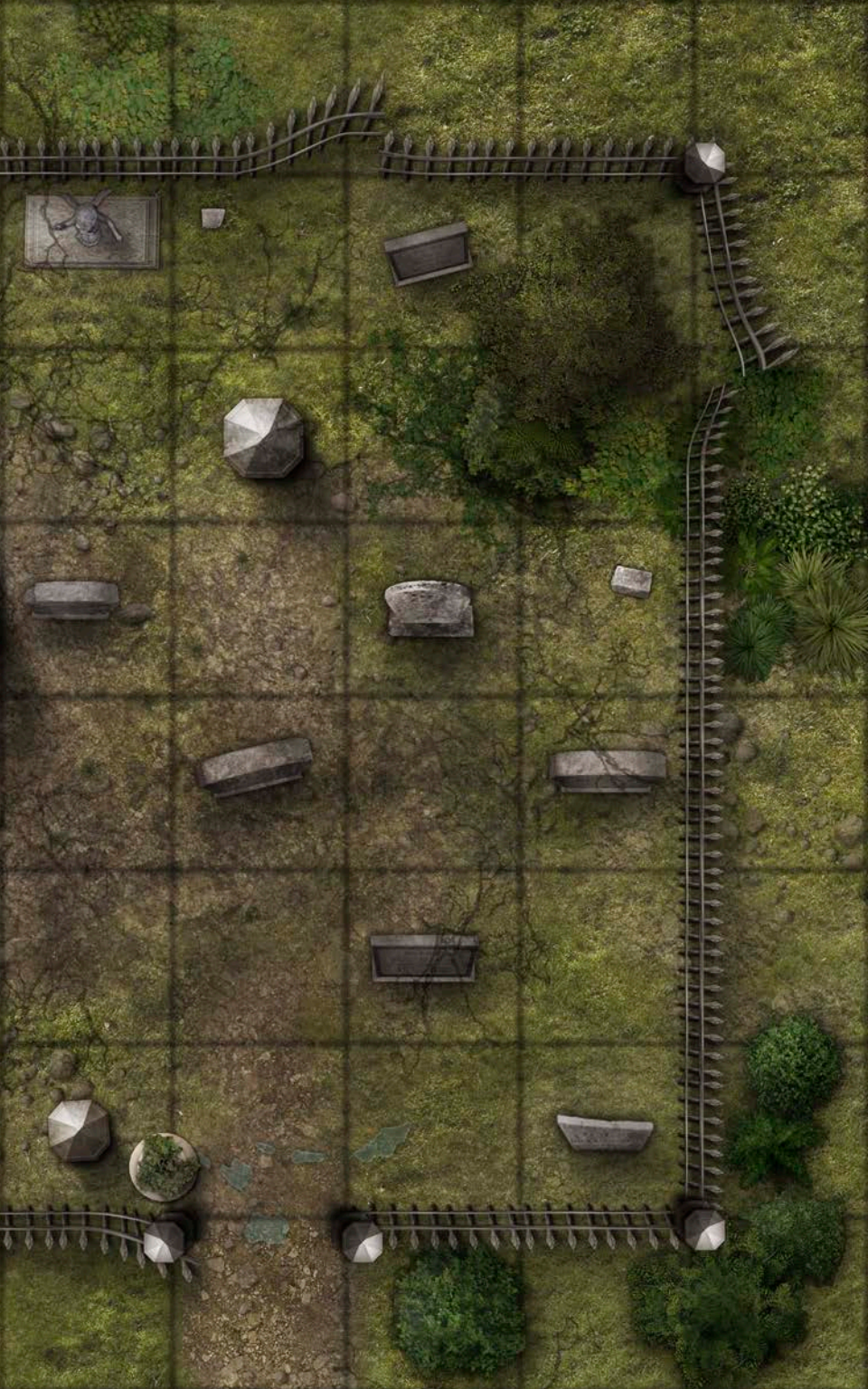














































# PATHFINDER MAP PACK



## YOU CAN'T GO HOME AGAIN

Whether your players are solving the mystery of vanished village residents, searching for clues to a generations-old crime, or driving out invaders so settlers can return, impatient visitors don't want to wait for a Game Master to draw every hole in the roof. This Pathfinder Map Pack provides beautifully illustrated 5" x 8" map tiles that can be used to construct a variety of village ruins. Inside, you'll find 18 richly crafted map tiles, with features like:

- Broken Bridge
- Scorched Room
- Moldering House
- Weedy Graveyard
- Abandoned Fountain
- Rotting Granary

Game Masters shouldn't waste their time sketching maps whenever characters decide to visit an abandoned hamlet. With *Pathfinder Map Pack: Ruined Village*, you'll always be ready to take your players into the too-quiet walls of former residences—and face the horrors within!



Paizo Inc.  
7120 185th Ave NE, Ste 120, Redmond, WA 98052-0577  
Printed in China.

Paizo, Paizo Inc., the Paizo golem logo, Pathfinder, and the Pathfinder logo are registered trademarks of Paizo Inc.; Pathfinder Flip-Mat, Pathfinder Map Pack, and Pathfinder Roleplaying Game are trademarks of Paizo Inc. © 2017, Paizo Inc.

[paizo.com/maps](http://paizo.com/maps)

Design by Stephen Radney-MacFarland  
Cartography by Jason Engle

ISBN 978-1-60125-947-9 US \$14.99  
5 1 4 9 9 >  
9 781601 259479

PZO4068