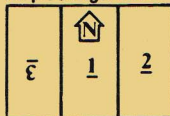


PanzerBlitz Situation #25

BLOCKING ACTION: MADONA SECTOR, LATVIA (22/9/44). The collapse of Army Group Center left AG North stranded in the Baltic states. As AG North withdrew into an enclave on the Courland peninsula, Russian spearheads reached out, attempting to split the Germans and defeat them in detail. The worst crisis came when the 2nd Baltic Front smashed the German 10th Corps at Madona; a short dash to Riga and the whole evacuation from Estonia and Latvia would be intercepted.

Map Configuration



★ RUSSIAN FORCES



A spearhead of the 3rd Shock Army enters on Eastern edge.

5 I 4 16 BTR 146 1	7 A 3 3 14 0	8 I 1 12 SRS 181 1	3 M 12 8 7 0 1	24 M 20 2 17 0 1	3 H 10 7 2 0 0	3 I 2 8 112 1	0 C 0 1 TRUCK 428 12
9	3	6	6	3	2	2	17

40 H 20 1 122 0	14 A 8 12 10 8 822 11	40 H 10 16 58 741 7	15 A 8 10 134/76 961 11	18 A 8 12 21 0 11 8	0 - 0 1 201 0	2 C(I) 1 2 447/10 444 10
2	2	2	6	2	2	6

✚ GERMAN FORCES



A battle group of the Nordland Division enters first on West edge of board.

16 A 12 12 263 10	14 A 8 8 Panther IV 505 8	12 A 8 12 76 8 874 8	3 I 6 8 BTR 146 1	6 I 3 16 SRS 183 1	20 A 20 6 BASDRN 850 8	40 H 32 5 WSP 621 8	60 H 24 6 631 8
9	9	3	16	4	1	1	1

2 H 4 3 531 16	20 A 20 1 42 0	2 C(I) 4 4 445 10	0 C 0 1 TRUCK 424 12
3	2	10	12

VICTORY CONDITIONS:

Award each side 1 point for every enemy unit destroyed. Award the Russians 2 points for each unit moved off the Western edge of the map. Side with the most points wins.

Ger.
moves first
Turn

1

2

3

4

5

6

7

8

9

10

END

11