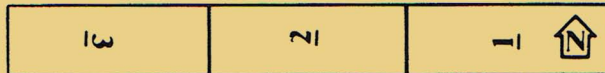


PanzerBlitz Situation #20

SCREENING ACTION (HYPOTHETICAL). SOMEWHERE IN RUSSIA, 1944. Often in defensive operations, light mobile units such as a reconnaissance battalion will be called upon to screen the flanks of line units, or fill a gap in their absence. Ideally, the enemy in these situations will be delayed by firepower, without decisively engaging the defense.



Map Configuration



RUSSIAN FORCES



A Soviet tank brigade, backed by motorized infantry sets up first on board 1, on or east of row Z.

12 A 6 9 1 M C 11	14 A 8 12 SU 85 822 11	8 I 1 12 SMO 183 1	7 A 3 3 13 0	12 A 5 2 75 2 31 0	3 I 1 4 RECON 135 1	6 I 6 2 12 7 2 0	3 M 12 3 87 88 1
----------------------	---------------------------	-----------------------	-----------------	-----------------------	------------------------	---------------------	---------------------

6 2 6 3 1 1 1 1

O C O
1 TRUCK 425 12

14

VICTORY CONDITIONS:

Award Russians 1 point for each unit moved off west edge of board 3. Award each side one point for each enemy unit destroyed. The side with the highest total wins.



GERMAN FORCES



A German recon battalion sets up on or west of row Y on board 1.

3 I 6 8 RECON 149 1	2 C(I) 4 1 HALF TRK 440 10	20 A 20 1 41 0	3 M 12 3 83 1	6 A 5 3 14	3 I 4 10 112 1	13 A 8 3 520 14	2 H 4 3 531 16
------------------------	-------------------------------	-------------------	------------------	---------------	-------------------	--------------------	-------------------

3 6 1 1 1 1 1 3

12 A 8 12 SU 85 872 8

2

Rus
moves first
Turn

1

2

3

4

5

6

7

8

9

10

11

END
12