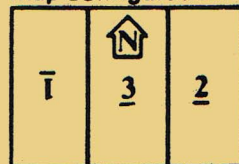


PanzerBlitz Situation #17

POCKETING ACTION: VISTULA RIVER LINE (13/1/45). With the start of the Russian offensive on January 12, 1945, breakthroughs were achieved all along the Vistula River with the aid of massive artillery barrages. Intact defending units, as in all overwhelming offensives, often found themselves in danger of encirclement. In this situation, a German recon battalion races to safety with disordered Soviet mobile units in hot pursuit.

Map Configuration



RUSSIAN FORCES

Turn 1:

Enter on North edge of Board 1:

10 I 3	7 A 3	2 M 12	3 H 10	0 C 0
CAVALRY 304 3	ART 11 0	INF 81 1	INF 81 1	WHEELED 411 3
4	1	2	1	4



Enter on South edge of Board 3:

0 C 0	2 C(I) 1	3 I 1
TRUCK 423 12	HALF-TRK 441 10	RECON 131 4
3	1	4

Turn 2:

Enter on hex 3A8:

6 I 6	12 A 6	2 C(I) 1	7 A 3	5 I 4
INF 127 0	TRUCK 936 11	HALF-TRK 443 10	ART 12 0	RECON 144 1
1	6	2	1	2

Enter on South edge of Board 2:

5 I 4	12 A 6	7 A 3	2 C(I) 1	6 I 6
RECON 141 1	TRUCK 931 11	ART 12 0	HALF-TRK 441 10	INF 127 0
3	6	1	2	1

Enter on East edge:

15 A 8	18 A 8	16 A 8	8 I 1	3 I 1	3 I 2	5 I 4
TRUCK 963 11	INF 971 8	TRUCK 947 8	RECON 183 1	RECON 134 1	RECON 112 1	RECON 142 1
6	2	2	1	1	1	3



GERMAN FORCES

German enters on East edge, turn 1.



2 H 4	6 A 5	12 A 8	3 I 6	13 A 8	2 A 4	3 M 12	3 I 4
HALF-TRK 16 16	TRUCK 14 14	RECON 827 8	RECON 143 1	TRUCK 520 14	TRUCK 410 10	INF 83 1	RECON 112 1
3	1	2	3	1	1	2	1

50 H 12	2 C(I) 4
TRUCK 110 10	HALF-TRK 143 10
4	4

VICTORY CONDITIONS:

1 6
Award German 1 point for each unit moved off North, South, or West edge of board 1.

5 pts or under – Russian Decisive 12 pts or over – German Marginal
8 pts or under – Russian Tactical 15 pts or over – German Tactical
11 pts or under – Russian Marginal 18 pts or over – German Decisive

Ger moves first
Turn

1

2

3

4

5

6

7

8

9

END

10