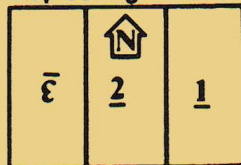


PanzerBlitz Situation #14

GERMAN REAR AREA RAID: WESTERN BYELORUSSIA (9/44). During and after the great 1944 offensives, there would be periods when no stable, clearly-defined front existed. A German reconnaissance battalion (reinforced) has penetrated Russian lines and is now in striking distance of a Soviet army headquarters.

Map Configuration



★ RUSSIAN FORCES



The Russian CP represents army HQ (it can still spot); the recon companies represent hastily-mobilized HQ personnel (clerks, cooks, etc.).

Enter East edge of Board 1 on Turn 1:

15 A 8 10 962 11 6	7 A 3 12 0 3	5 I 4 16 142 1 6	12 A 6 1 34 11 2	8 I 1 12 186 1 1	3 I 2 8 111 1 1	24 M 20 2 93 0 1	40 H 10 16 152 7 1
--------------------------	--------------------	------------------------	------------------------	------------------------	-----------------------	------------------------	--------------------------

16 A 8 15 842 8 2	0 C 0 1 425 12 12
-------------------------	-------------------------

Golod & any 2 adjoining hexes:

7 A 3 3 14 0 1	5 I 4 16 142 1 3	0 C 0 1 432 12 5	2 M 12 8 82 1 1
----------------------	------------------------	------------------------	-----------------------

Bednost & any 2 adjoining hexes:

6 I 6 12 7 0 2	0 CP 1 201 0 1	3 I 1 8 15 1 5	9 A 4 3 72 0 2
----------------------	----------------------	----------------------	----------------------

✚ GERMAN FORCES



Enter West edge of Board 2 on Turn 1.

6 A 5 3 14 0 1	2 A 4 6 910 8 1	3 I 6 8 145 1 3	3 M 12 3 84 1 2	20 A 12 15 862 9 2	12 A 8 12 873 8 2	13 A 8 3 520 14 1	2 H 4 3 531 16 3
----------------------	-----------------------	-----------------------	-----------------------	--------------------------	-------------------------	-------------------------	------------------------

3 I 4 10 111 1 1	2 C(I) 4 4 444 10 6
------------------------	---------------------------

VICTORY CONDITIONS:

Award each side the following points for destruction of units: CP: 12; recon: 3; AFV (excluding halftracks): 2; all others: 1. Double the Russian total and compare to the German total – the side with the most points wins.

Ger.
moves first
Turn

1

2

3

4

5

6

7

END

8