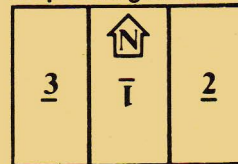


PanzerBlitz Situation #5

GERMAN RECONNAISSANCE IN FORCE: ACTION AGAINST THE LUTEZH BRIDGEHEAD ON THE DNEIPEP (10/10/43). The Russians had thrown a bridgehead across the Dnieper River which the Germans had to penetrate before attacking it.

Map Configuration



RUSSIAN FORCES



842nd Rifle Rgt (reinforced) of the 294th Rifle Div. Sets up on No. 1 board first.

5 I 4 RIFLE 142 1	3 M 12 87 mm 86 1	8 I 1 SMG 184 1	24 M 20 120 mm 91 2	3 H 10 76 mm 81 2	40 H 20 122 mm 71 1	12 A 5 SU 76 812 9	7 A 3 45 mm 13 0
x8	x2	x2	x2	x2	x2	x2	x3

MINES 2-1 x4	X x6	0 C 0 TRUCK 422 12 x2	0 C 0 WAGON 413 3 x6
--------------------	---------	---	--

VICTORY CONDITIONS:

Win if they can prevent the Germans from accomplishing their victory conditions



GERMAN FORCES



Battle group of the 7th Pz Div (elements of 25th Pz Rgt, 6th PG Rgt, 38th Engr Bn, 42nd AT Bn, 78th Arty Rgt and 42nd Recon Bn). Set up on No. 3 board. Move first.

2 H 4 SABOT 531 16 x2	14 A 8 PzKfz IV 952 8 x2	12 A 8 SG III 75 821 8 x2	3 I 6 RIFLE 142 1 x3	3 M 12 81 mm 82 1	3 I 4 112 1	40 H 32 WESPE 621 8 x2	0 - 0 CP 202 0 x3
---	--	---	--	----------------------------------	-------------------------	--	-------------------------------------

2 C(I) 4 HALFTRK 542 10 x8
--

VICTORY CONDITIONS:

Must get units off the east edge of the board (all must leave board at once), stay off for three complete turns, re-enter on hexes they left on and get off the west edge of No. 3 board by turn 12. Marginal Victory = 7 units off. Tactical = 14 units. Decisive = 20 units.

Ger.
moves first
Turn

1

2

3

4

5

6

7

8

9

10

11

END
12