

INFLUENCE

Take +1 to all moves targeting the character who gave you this card.

When you take advantage of this Influence, return this card to the character who gave it to you and choose one:

- » Inflict a condition on them, your choice.
- » They take -2 on a move they just made (after their roll).
- » Take an additional +1 on a move targeting them (after your roll).

If you would get another Influence card from the same character, instead immediately shift 1 of their Labels up and 1 of their Labels down, your choice.

INFLUENCE



INFLUENCE

Take +1 to all moves targeting the character who gave you this card.

When you take advantage of this Influence, return this card to the character who gave it to you and choose one:

- » Inflict a condition on them, your choice.
- » They take -2 on a move they just made (after their roll).
- » Take an additional +1 on a move targeting them (after your roll).

If you would get another Influence card from the same character, instead immediately shift 1 of their Labels up and 1 of their Labels down, your choice.

INFLUENCE



INFLUENCE

Take +1 to all moves targeting the character who gave you this card.

When you take advantage of this Influence, return this card to the character who gave it to you and choose one:

- » Inflict a condition on them, your choice.
- » They take -2 on a move they just made (after their roll).
- » Take an additional +1 on a move targeting them (after your roll).

If you would get another Influence card from the same character, instead immediately shift 1 of their Labels up and 1 of their Labels down, your choice.

INFLUENCE



INFLUENCE

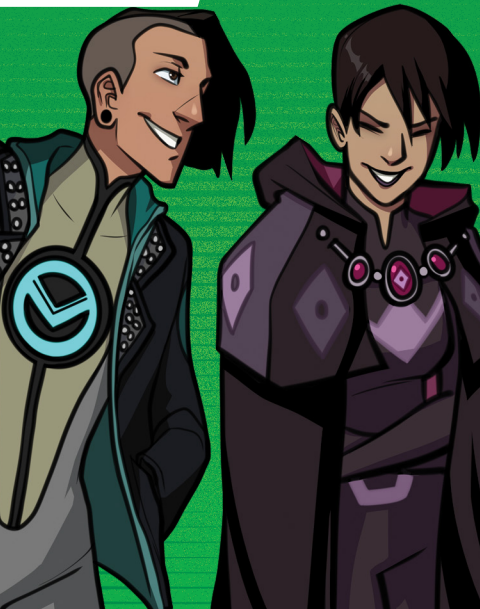
Take +1 to all moves targeting the character who gave you this card.

When you take advantage of this Influence, return this card to the character who gave it to you and choose one:

- » Inflict a condition on them, your choice.
- » They take -2 on a move they just made (after their roll).
- » Take an additional +1 on a move targeting them (after your roll).

If you would get another Influence card from the same character, instead immediately shift 1 of their Labels up and 1 of their Labels down, your choice.

INFLUENCE



INFLUENCE

Take +1 to all moves targeting the character who gave you this card.

When you take advantage of this Influence, return this card to the character who gave it to you and choose one:

- » Inflict a condition on them, your choice.
- » They take -2 on a move they just made (after their roll).
- » Take an additional +1 on a move targeting them (after your roll).

If you would get another Influence card from the same character, instead immediately shift 1 of their Labels up and 1 of their Labels down, your choice.

INFLUENCE

