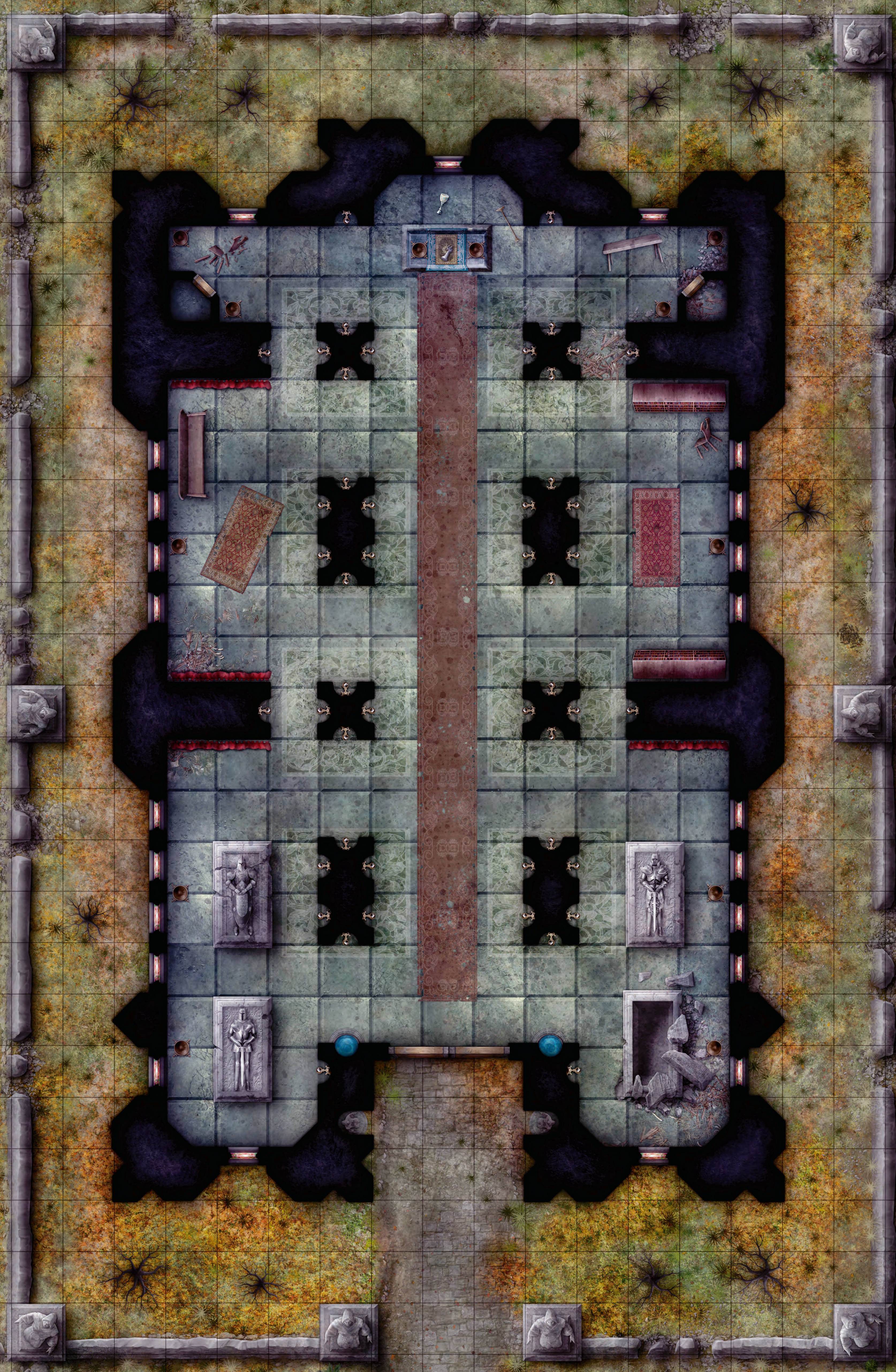


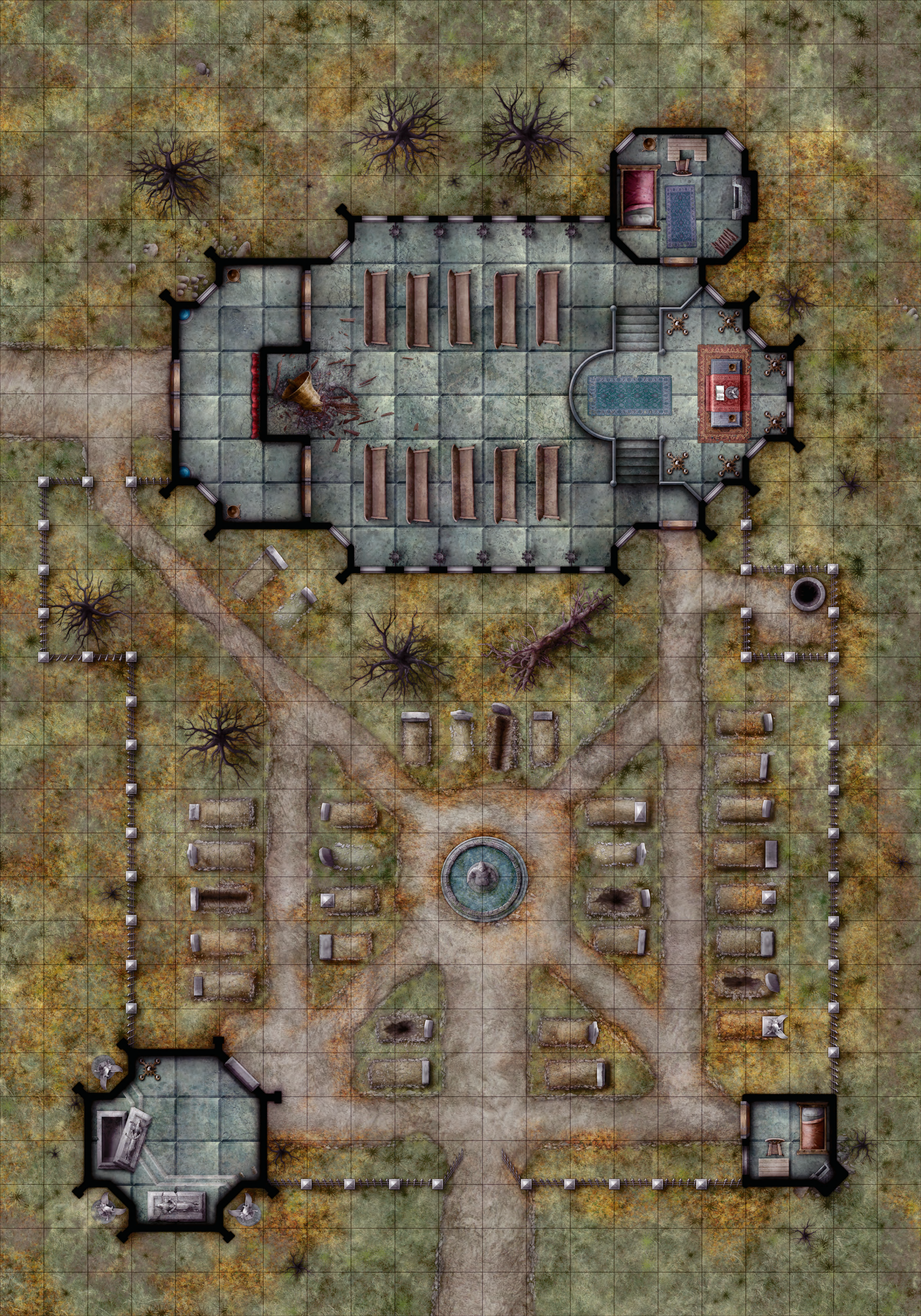
# DUNGEONS & DRAGONS

## HAUNTED TEMPLES™

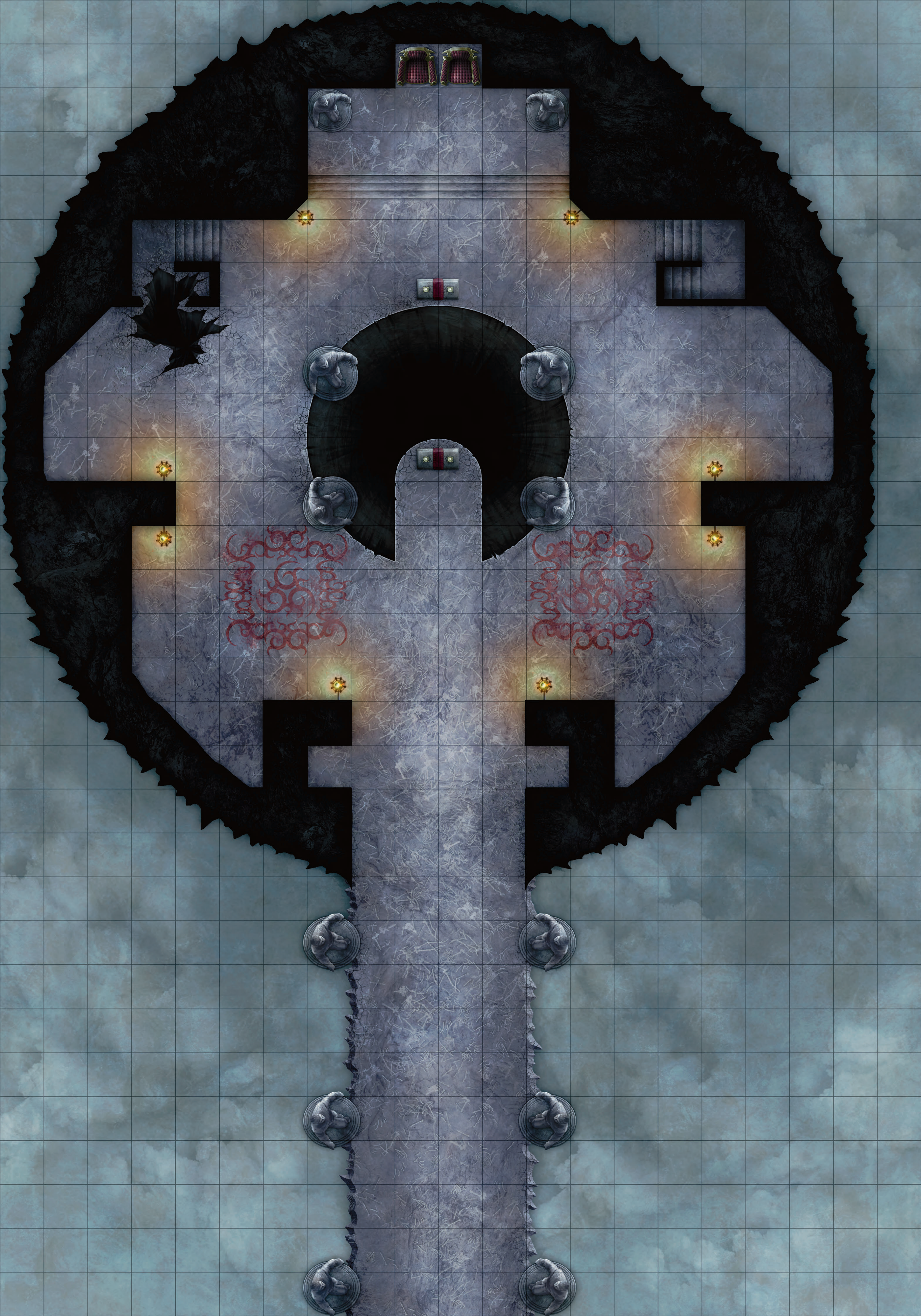


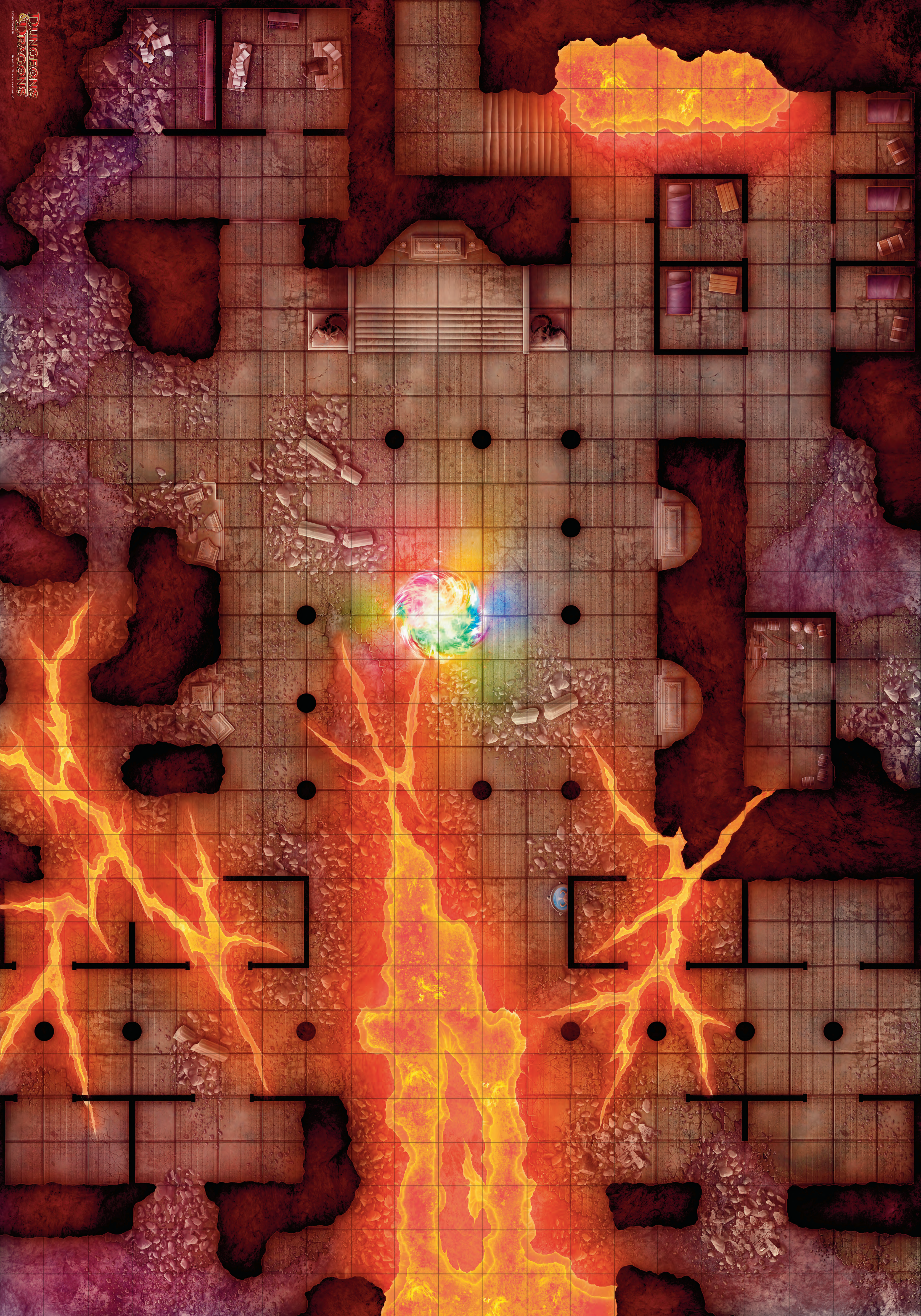
MAP PACK

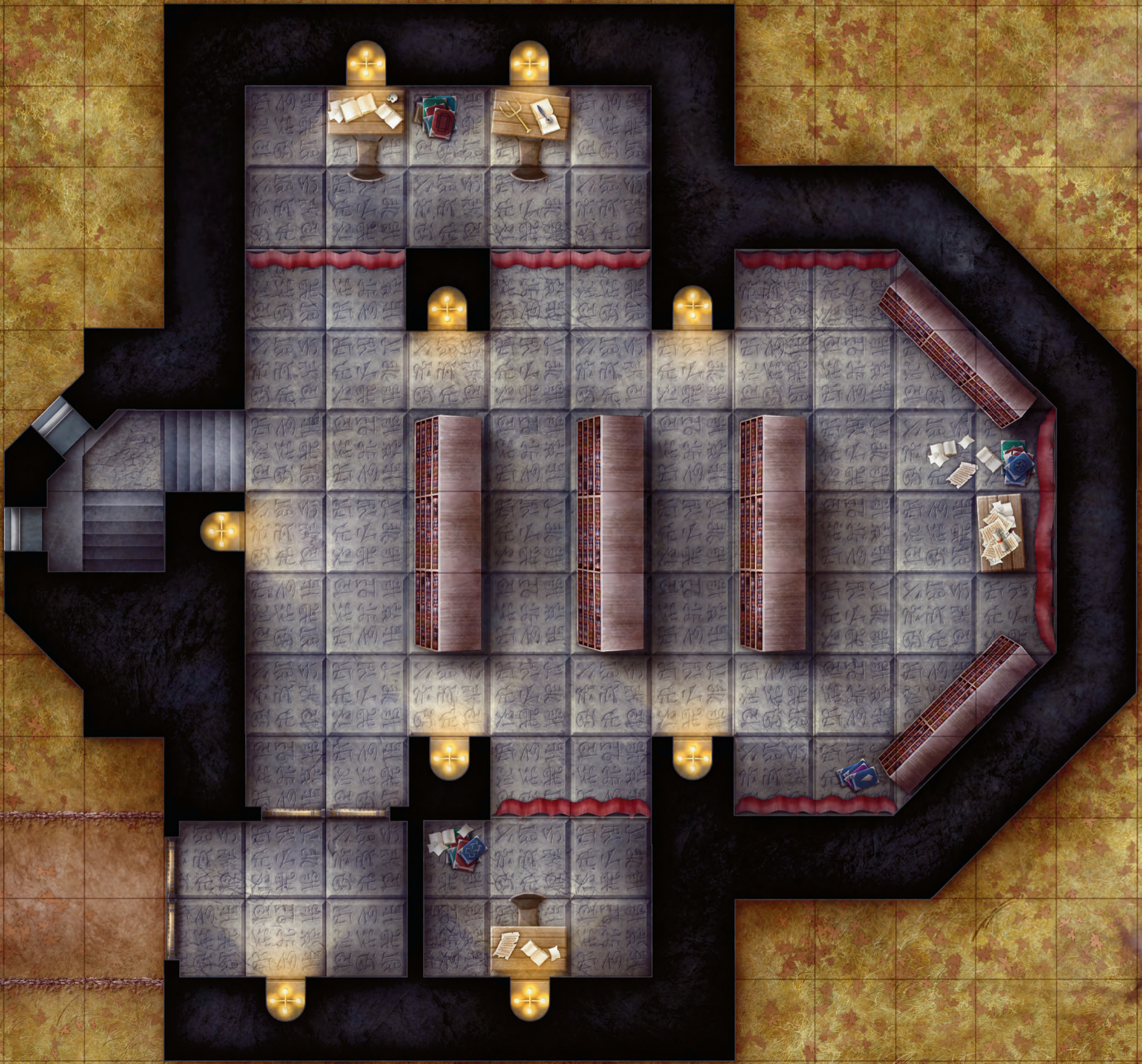
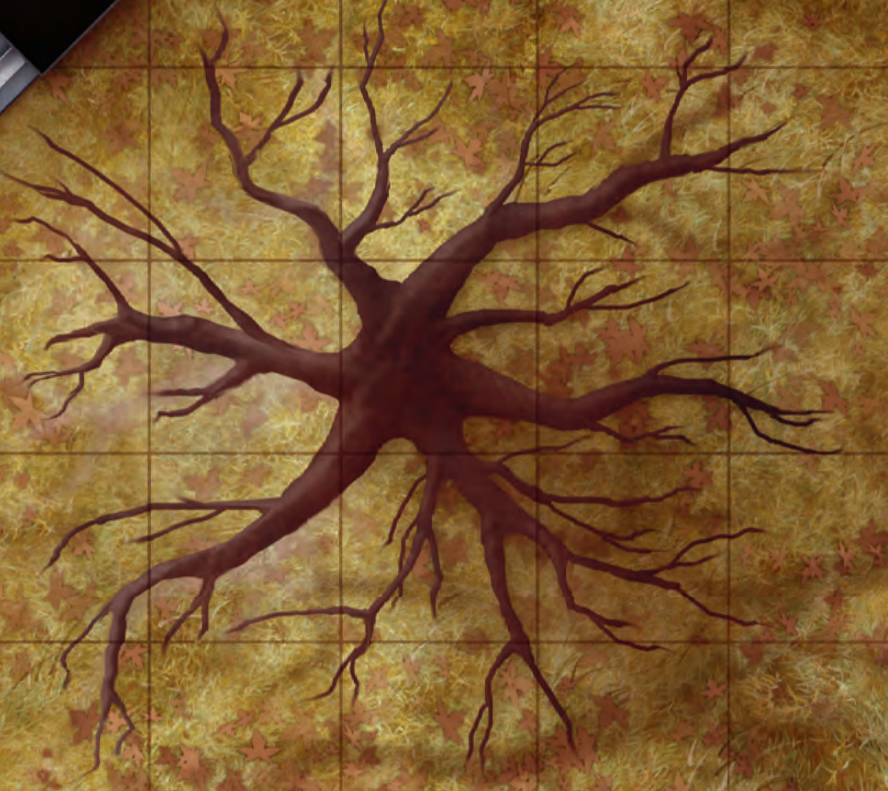
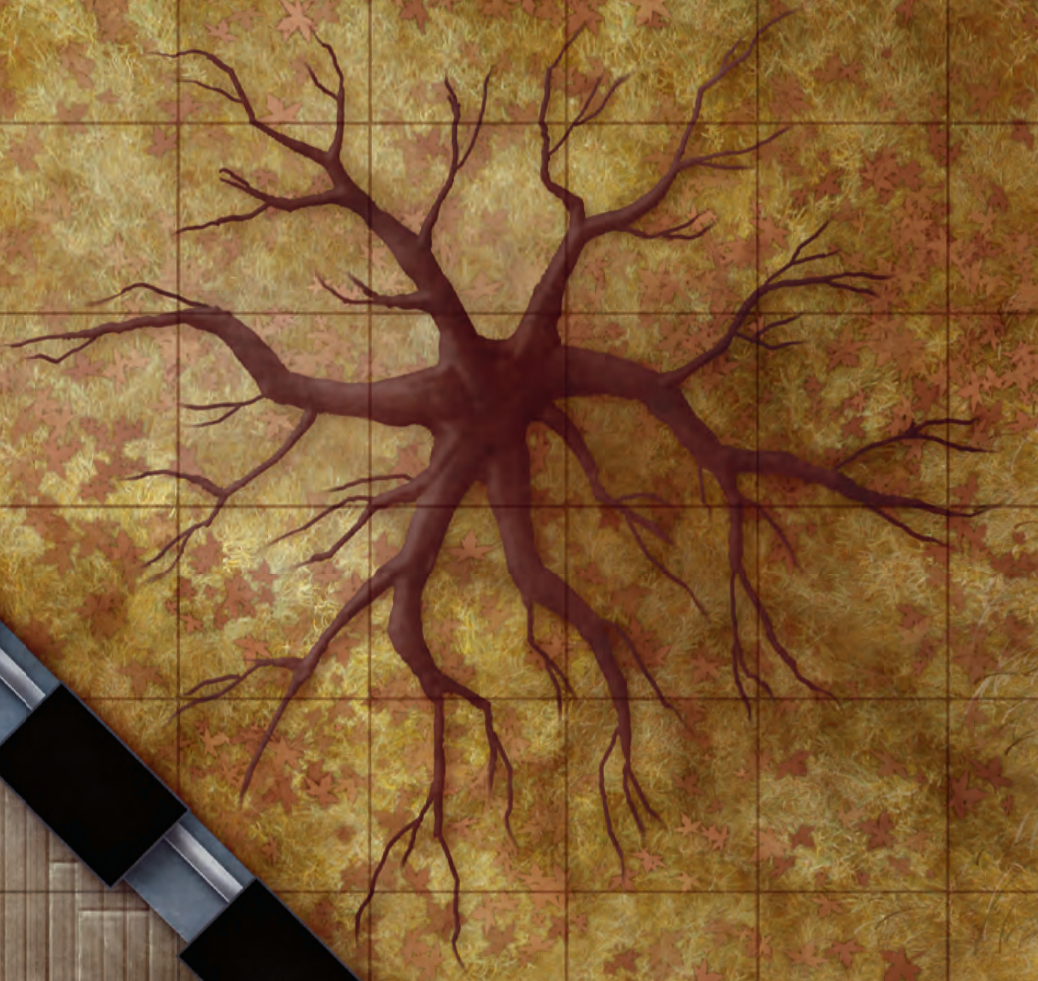
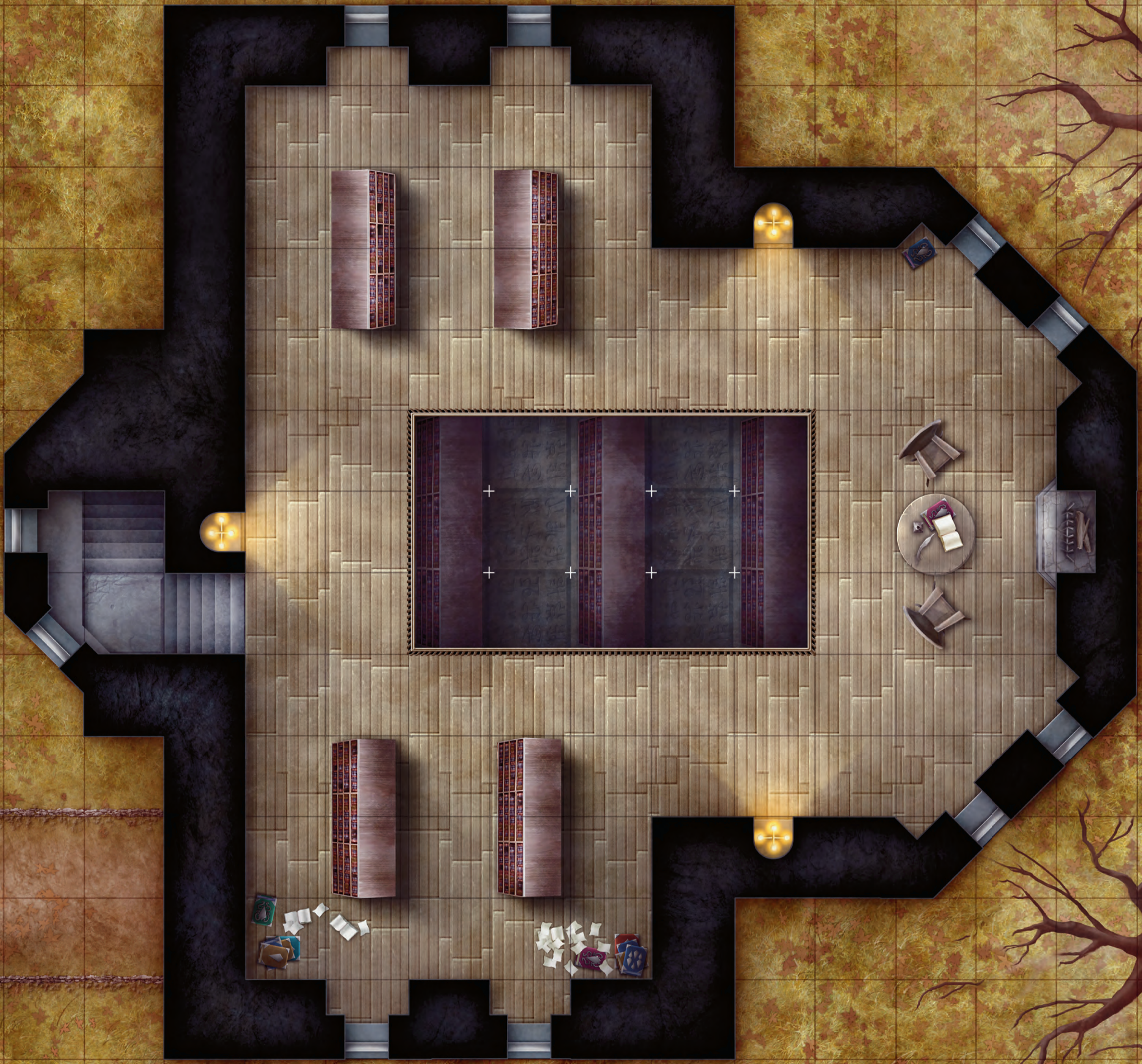












# FOLDOUT BATTLE MAPS FOR YOUR D&D® CAMPAIGN

Dungeon Masters need awesome maps to create memorable encounters. This pack contains 3 full-color, double-sided, 21-by-30-inch battle maps with 1-inch grids. One map features two exciting, never-before-seen encounter locations: a crumbling cathedral and a haunted chapel with adjoining cemetery. The other two battle maps are picked up from out-of-print sources. All three maps provide attractive, reusable terrain suitable for any D&D campaign.

Map Pack products are compatible with all editions of the *DUNGEONS & DRAGONS® Roleplaying Game* and are designed for use with D&D® miniatures.

[DUNGEONSANDDRAGONS.COM](http://DUNGEONSANDDRAGONS.COM)



Dungeons & Dragons, Wizards of the Coast, D&D Insider, their respective logos, D&D, and Haunted Temples are trademarks of Wizards of the Coast LLC in the U.S.A. and other countries.  
©2012 Wizards of the Coast LLC.

Wizards of the Coast LLC  
PO Box 707, Renton, WA 98057-0707, U.S.A.  
Manufactured by: Hasbro SA  
Route de Courroux 6, 2800 Delemont, CH.  
Represented by: Hasbro Europe  
2 Roundwood Ave, Stockley Park  
Uxbridge, Middlesex, UB11 1AZ, UK.  
Importé au Canada par Wizards of the Coast LLC  
PO Box 707, Renton, WA 98057-0707, U.S.A.  
FABRIQUÉ EN CHINE.

ISBN: 978-0-7869-5987-7



5 1195



EAN

Sug. Retail: US \$11.95 CAN \$12.95  
MADE IN CHINA C-1827A 388470000

Please retain package for future reference.