

طريق

Cartographedia

The Island Laboratory



Credits

Cartography: Dana Driscoll

Layout: Kosala Ubayasekara

<<http://www.silven.com/>>

Using This Product

The Cartographedia series is a hand-painted, full-color line of quality RPG maps to meet your gaming needs. Each map set includes both printer-friendly and screen friendly high-resolution maps along with plot hooks and map details.

This product contains four sets of maps—a map of the island itself; a map of the natural cave with a secret passage to the first level of the base; a map of the first level of the base (also accessible by swimming through a tunnel in the cove); and a map of the second level of the base. The four maps can be used in isolation or as a set. Within each set includes full color maps with and without labels and printer-friendly black and white maps with and without labels.

Map Suggestions

Do you have ideas for future maps? Send them to maps@silven.com with the words “MAP REQUEST” somewhere in the subject line, and we will add them to the TODO list.

About the Artist

Synonyms for the word Dana include variegated, multifarious, or perhaps convoluted. Dana has a variety of different interests including reading, writing, learning, artwork, environmentalism, and playing RPGs. In her previous position as Editor-in-Chief of the *Silven Trumpeter*, she watched the *Trumpeter* grow from its pilot issue into the largest free RPG magazine on the Internet. She is currently Editor-in-Chief of Silven Publishing and author of various RPG supplements and artwork for products. Dana holds an M.A. in linguistics and is currently Ph.D. candidate working in rhetoric, composition, and literacy. She is also highly educated in the arts including painting, pottery, jewelry making, and digital design.

License

You are granted a license to print this product as many times as needed for personal use. Resale is prohibited in both partial or complete form.

Map Contents

Color Maps

Island (with labels)	3
Cave (with labels)	4
Upper Level (with labels)	5
Lower Level (with labels)	6
Island	7
Cave	8
Upper Level	9
Lower Level	10

Black and White Maps

Island (with labels)	11
Cave (with labels)	12
Upper Level (with labels)	13
Lower Level (with labels)	14
Island	15
Cave	16
Upper Level	17
Lower Level	18

SILVEN
PUBLISHING



Cartographedia The Island Laboratory

Web enhancements and free articles and updates can be found on the Silven Publishing website at <http://www.silven.com>.

Volcano was once active...

Steep cliffs surround the back of the island concealing a hidden cove

Hidden cave at the top of ravine

Ravine has a small stream with fresh water

Good fishing spot

Tropical forest has edible fruits and small game

Sandy shores lead to gentle waves

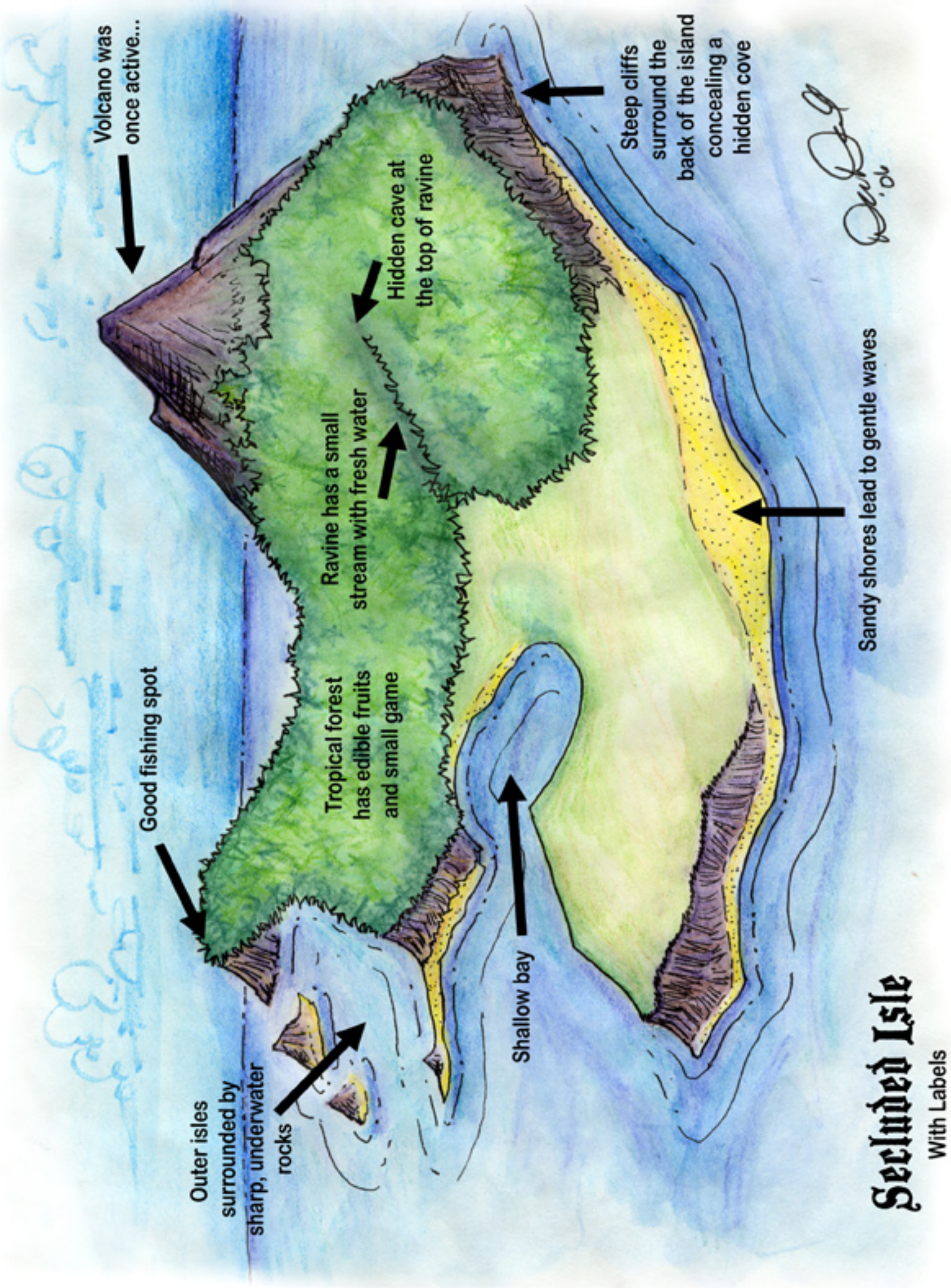
Outer isles surrounded by sharp, underwater rocks

Shallow bay

David D.

Secluded Isle

With Labels



Underground Stream:
Three feet deep

Stream emerges
from cave wall

Stream
goes under
cave wall

Cave stones provide cover

Stream continues
into cave wall

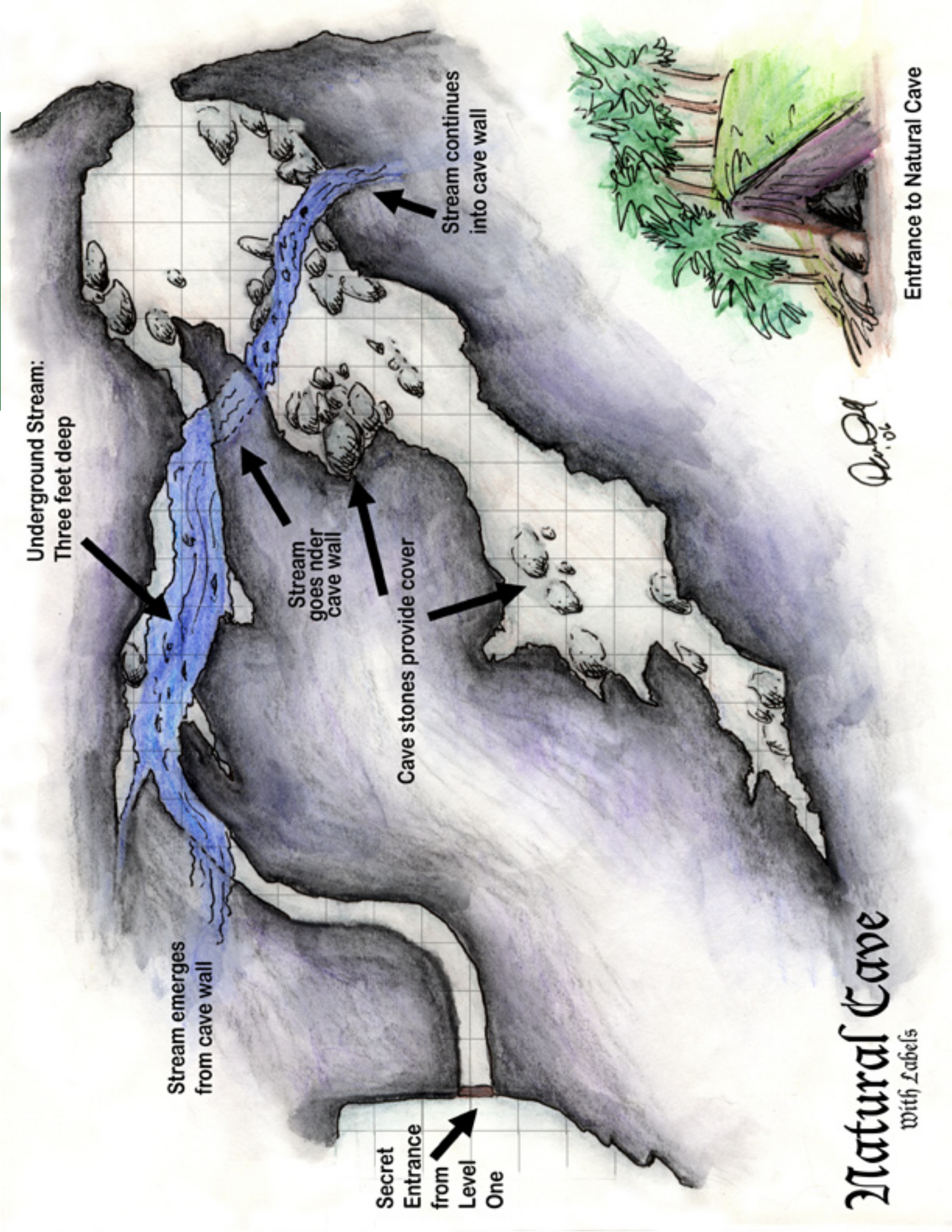
Secret
Entrance
from
Level
One

Natural Cave

With Labels

Entrance to Natural Cave

*Dr. Ed
1.06*

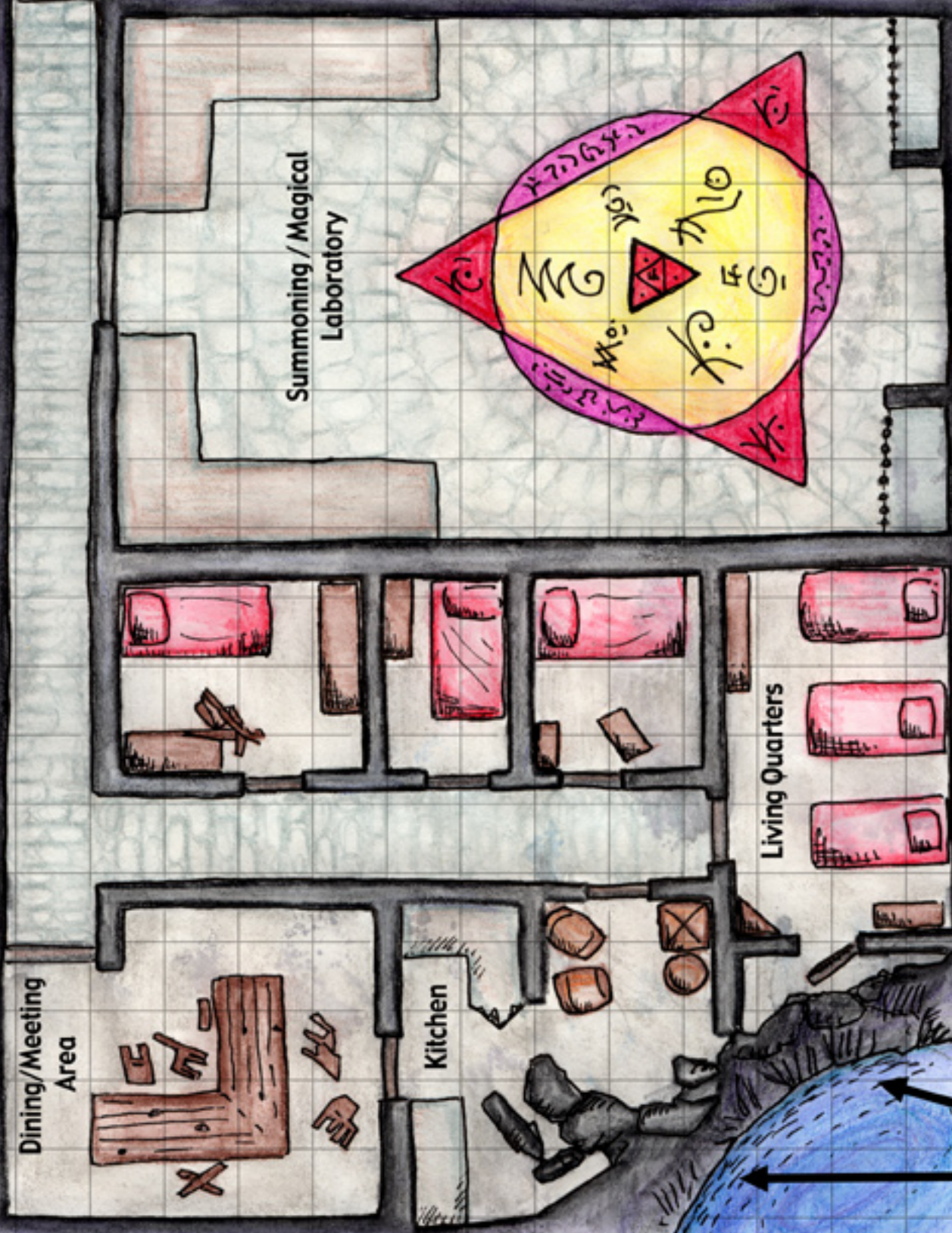


Abandoned Laboratory: Upper Level

With Labels

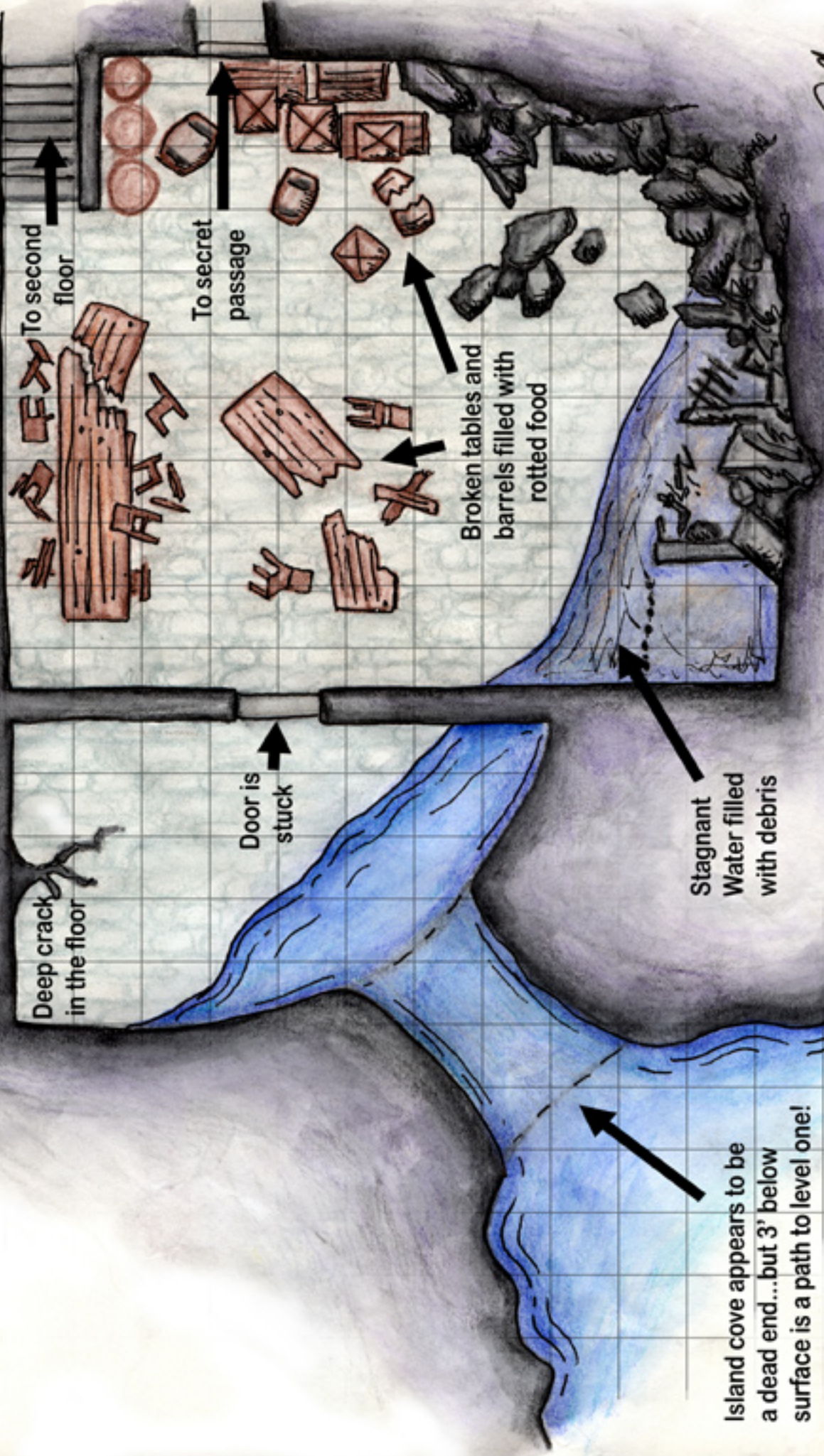
To lower level

D1D000



Bottom of level has crumbled or been broken through by force; it opens to the cove below.

Holding Cages



To second floor

To secret passage

Broken tables and barrels filled with rotted food

Door is stuck

Stagnant Water filled with debris

Deep crack in the floor

Island cove appears to be a dead end...but 3' below surface is a path to level one!

Abandoned Laboratory: Lower Level

With Labels

Bob
2/10/06

David D. D.



Secluded Isle

Natural Cave

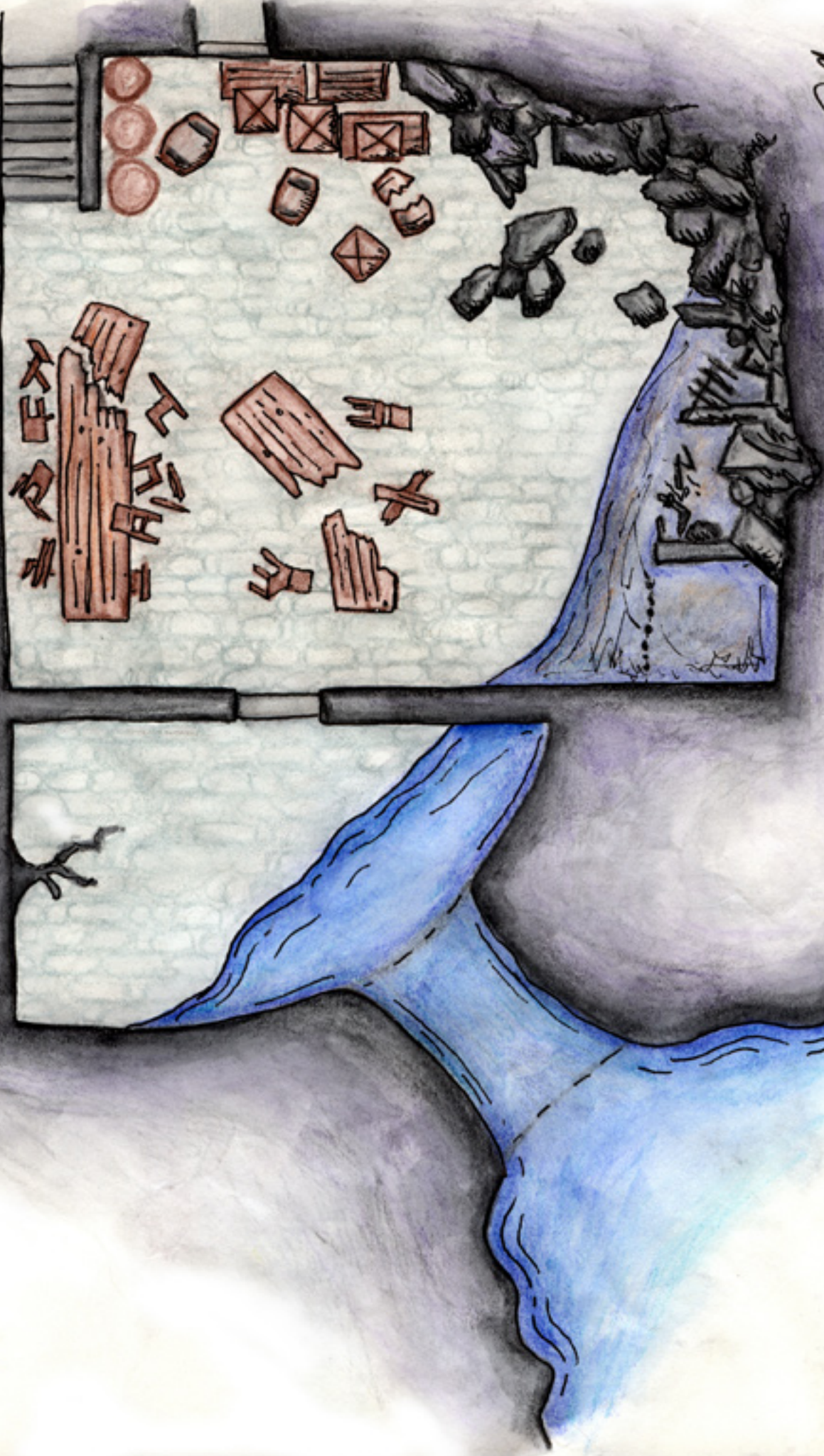




Abandoned Laboratory: Upper Level

**Lower Level
:fiotajogep Taborari:**

2/10/06



Volcano was once active...



Steep cliffs surround the back of the island concealing a hidden cove



Hidden cave at the top of ravine



Ravine has a small stream with fresh water



Good fishing spot



Tropical forest has edible fruits and small game

Outer isles surrounded by sharp, underwater rocks



Shallow bay



Sandy shores lead to gentle waves



David D.

Secluded Isle

With Labels

Underground Stream:
Three feet deep

Stream emerges
from cave wall

Stream
goes under
cave wall

Cave stones provide cover

Stream continues
into cave wall

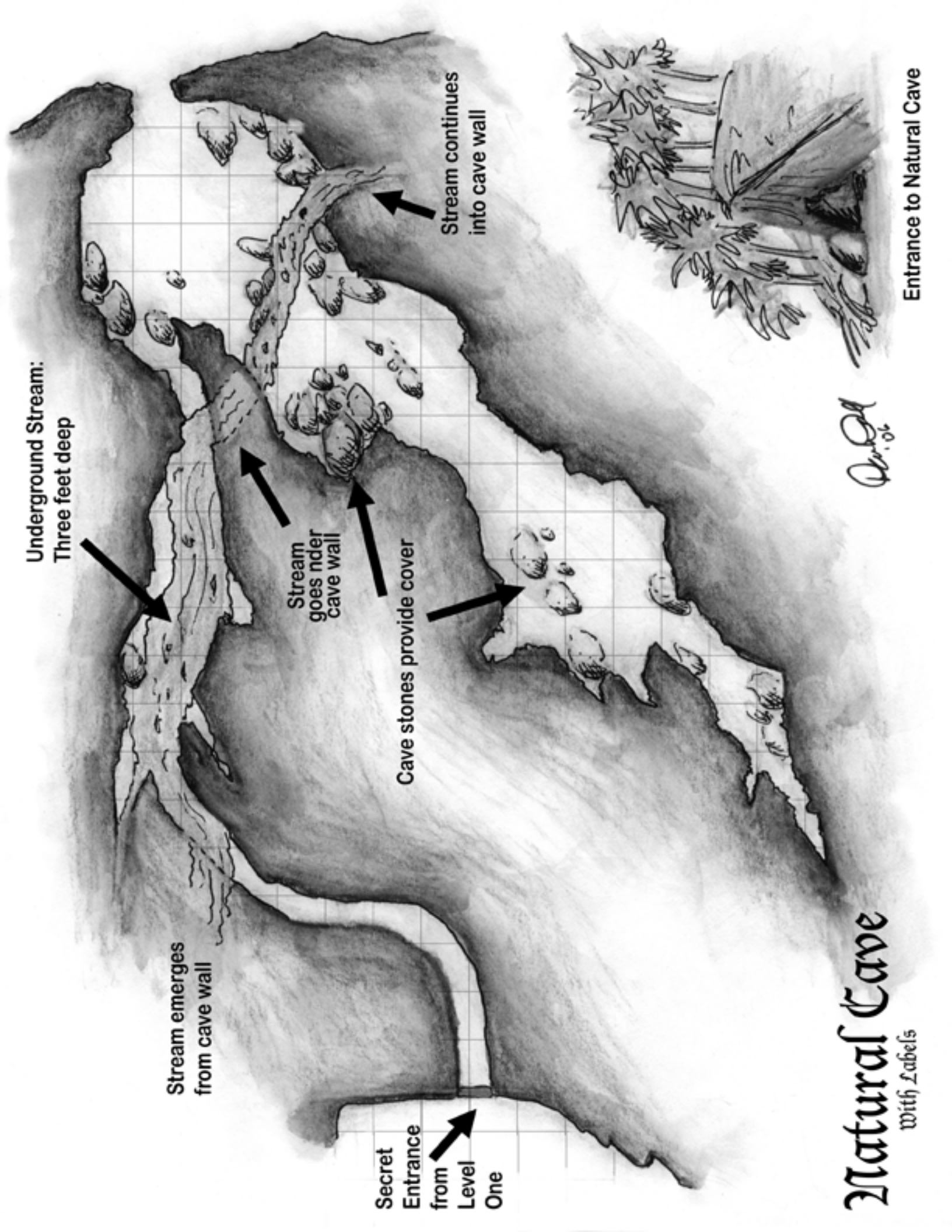
Secret
Entrance
from
Level
One

Natural Cave

With Labels

*Dr. Ed
1.01*

Entrance to Natural Cave

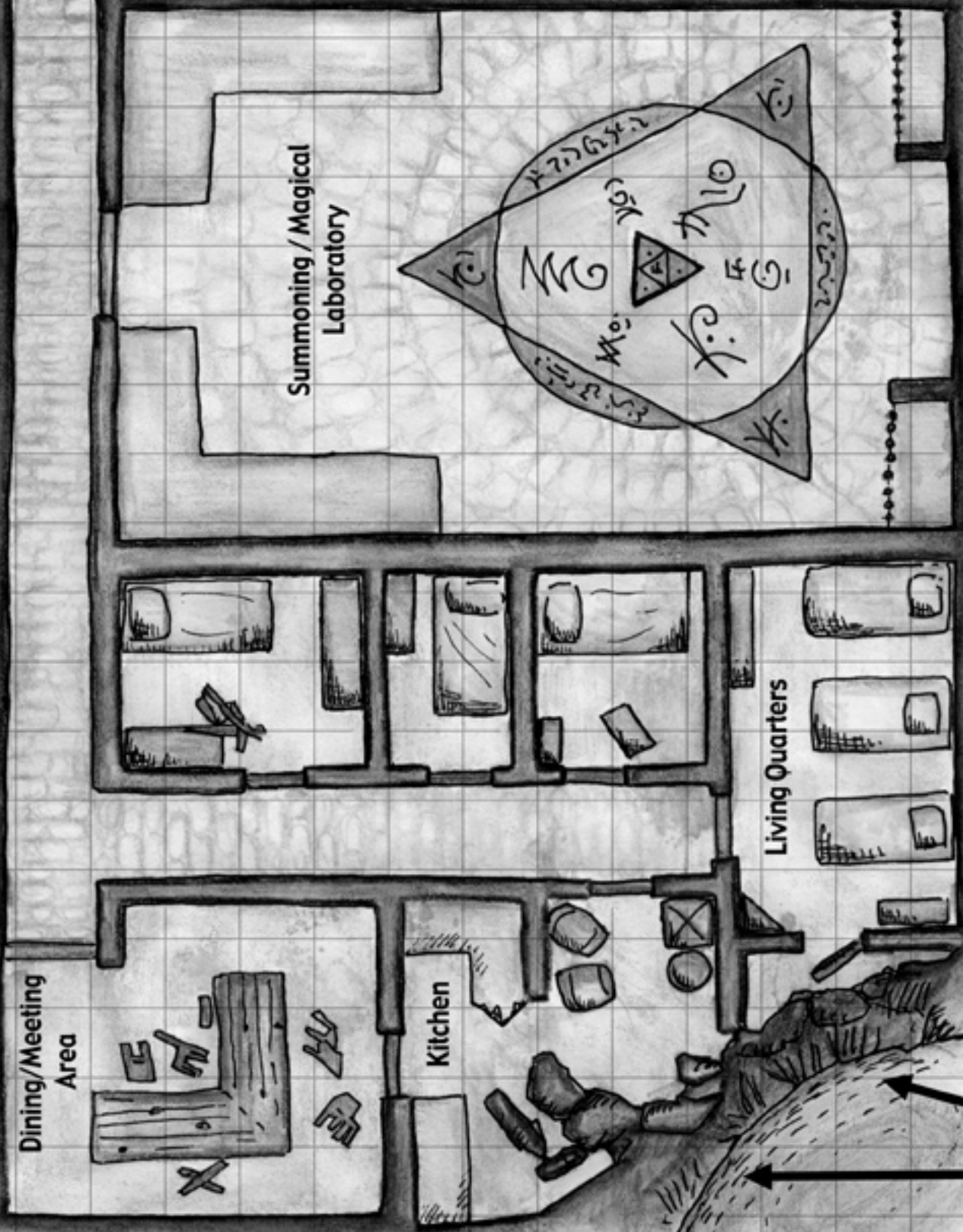


Abandoned Laboratory: Upper Level

With Labels

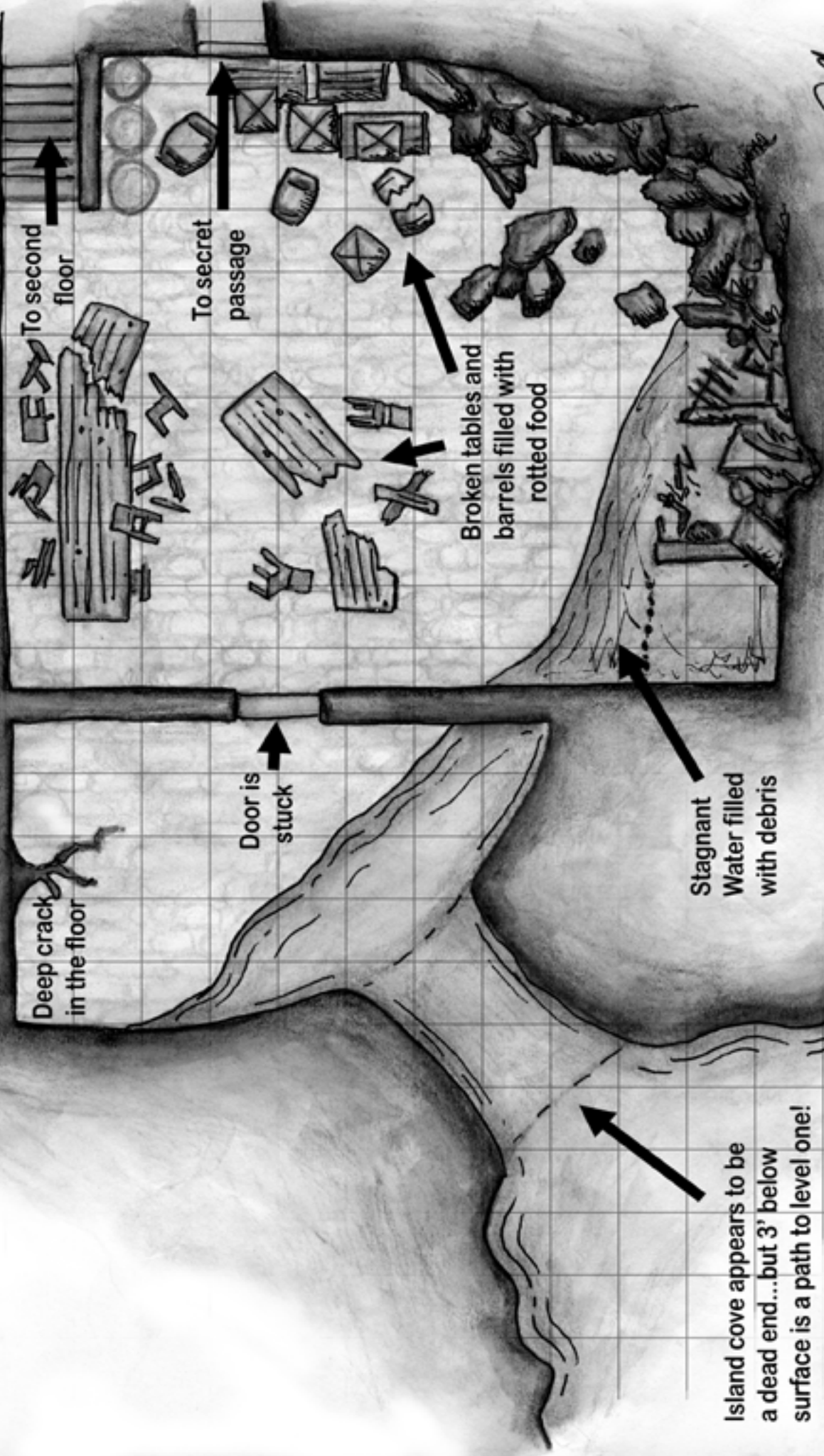
To lower level

D1D000



Bottom of level has crumbled or been broken through by force; it opens to the cove below.

Holding Cages



To second floor

To secret passage

Broken tables and barrels filled with rotted food

Door is stuck

Stagnant Water filled with debris

Deep crack in the floor

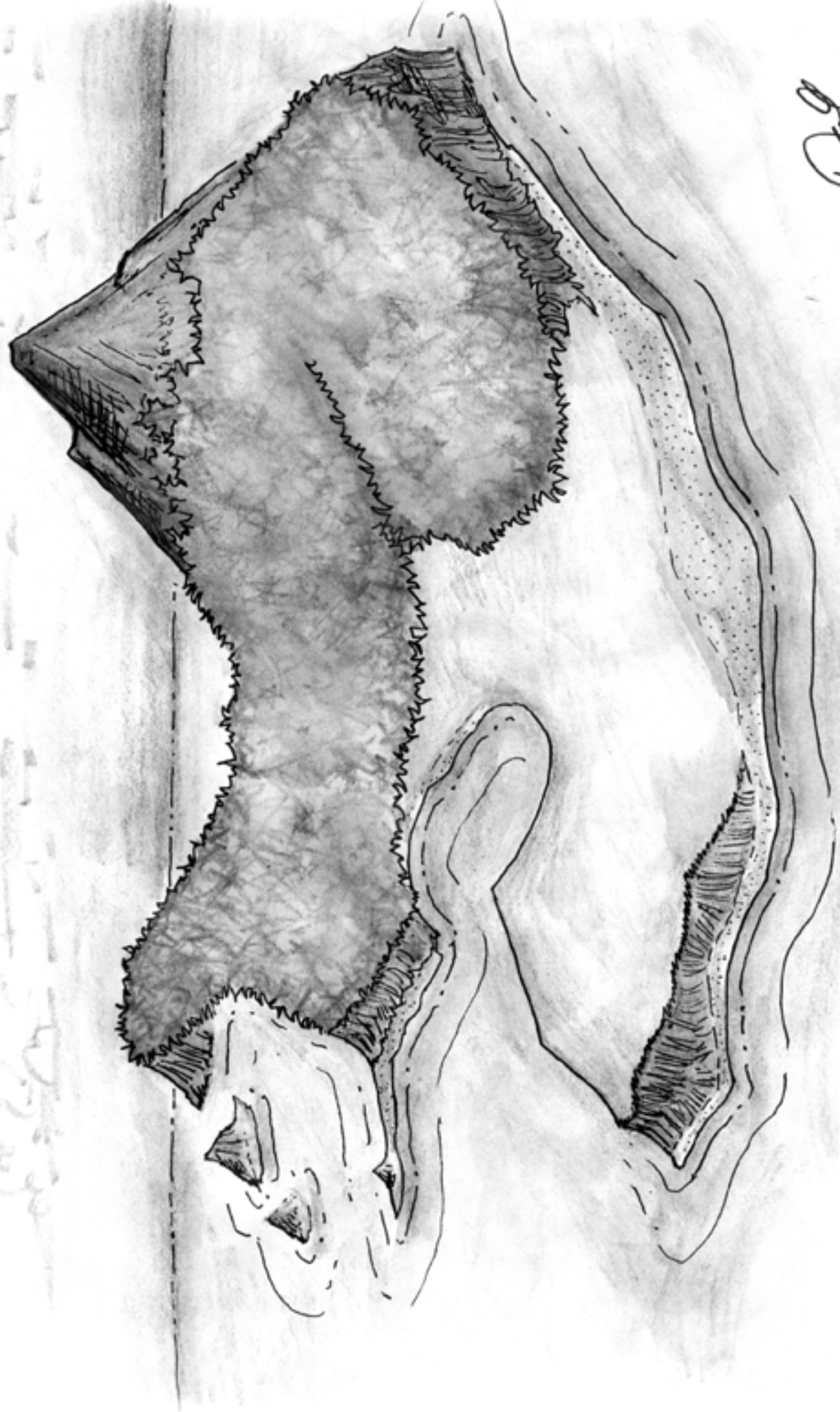
Island cove appears to be a dead end...but 3' below surface is a path to level one!

D. 106

Abandoned Laboratory: Lower Level

With Labels

Dr. D.

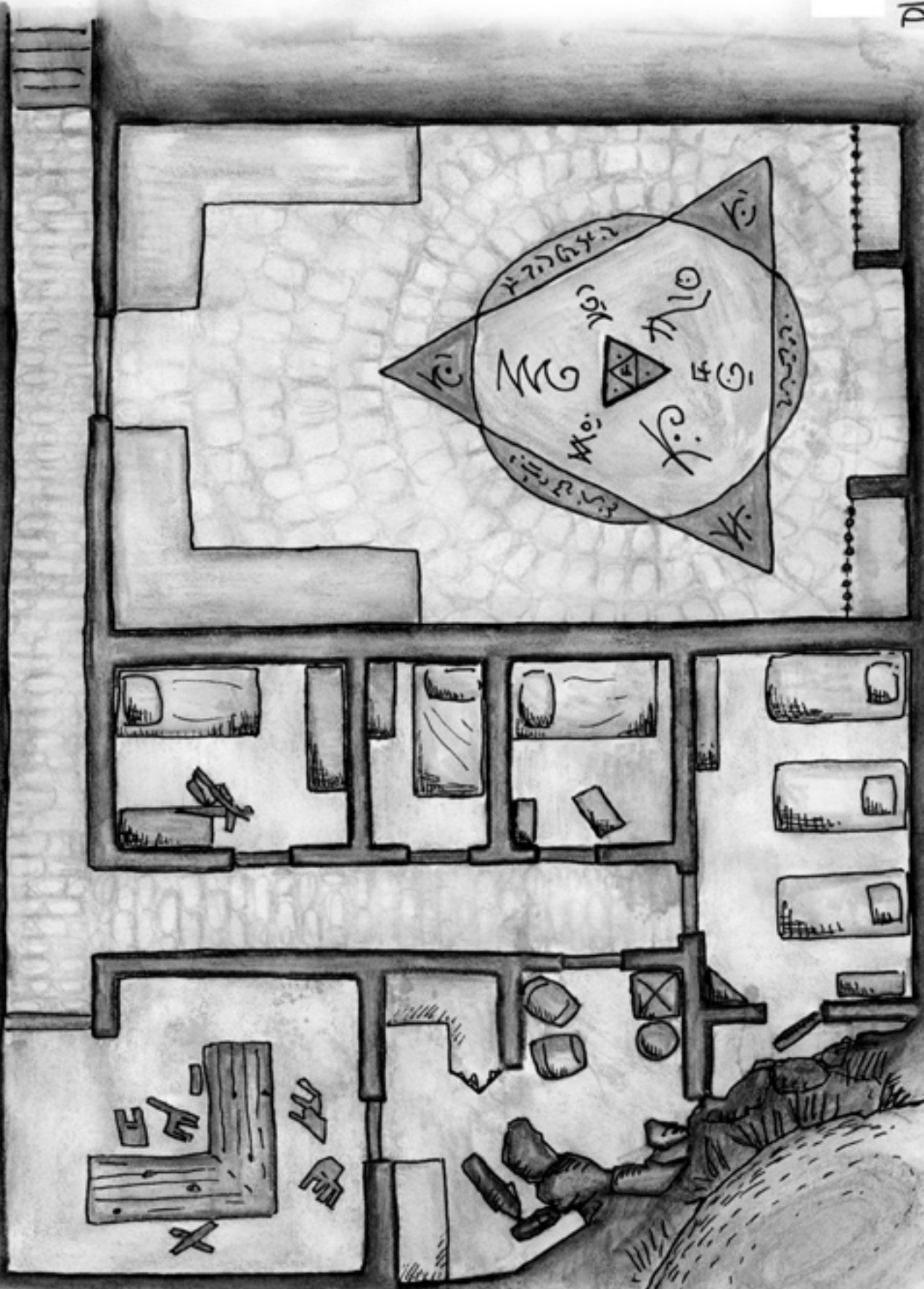


Secluded Isle

Natural Cave



David
2001



Abandoned Laboratory: Upper Level

2106
P.O.

Lower Level :fiojorogej paouogqyE

