

Isle of Shrines

BESTIARY



Barracuda

Barracudas are ferocious predatory fish with numerous needle-sharp teeth. They often hunt in shoals.



Crab

Crabs have a tough shell that resists damage, and a pair of crushing pincers. They rarely venture far from the shore.



Drowned One

Drowned ones – also known as sea zombies – are the animated corpses of humans who died at sea. As they putrefy their stench becomes increasingly overpowering.



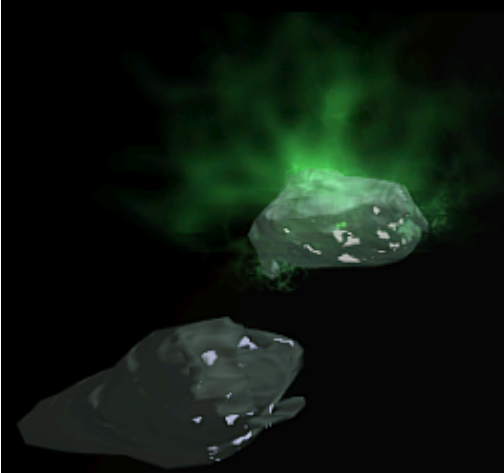
Electric Eel

These eels can discharge a burst of electricity at nearby prey



Fire Ants

Fire ants are aggressively territorial insects with a painful bite



Jellies & Oozes

Mustard jellies are highly resistant to non-magical weapons, and completely immune to electrical attacks. Their acrid fumes can stun anything close by.

The Crystal ooze is a variety of grey ooze which has adapted to living in water. It is translucent, mostly glassy clear, with an occasional milky white swirl in its substance. It is highly resistant to acid, cold, or fire damage.



Kuo-toa

The Kuo-toa are a fish-like race that live in deep watery caverns within the Underdark. They worship the evil sea goddess Blibdoolpoolp, or occasionally the demon lord Dagon.



Sahuagin

This predatory aquatic humanoid has scaly skin, webbed fingers and toes, and a mouth filled with shark-like teeth. The Sahuagin worship the shark god Sekolah, and have a particular hatred for sea elves.



Marine Scrag

Large, green, and pot-bellied, marine scrag are thick-skinned and heavily scaled. Their feet are wide and webbed to aid them in swimming. While their limbs are shorter and weaker than those of ordinary trolls, their mouths are larger and filled with hundreds of needle-sharp teeth.



Sea Elves

Sea Elves were transformed into a gilled aquatic race by the sea god Deep Sashelas. They are the sworn enemies of the shark-like Sahuagin.



Shark, Hammerhead

The distinctively shaped head of the hammerhead shark gives it particularly keen senses for finding prey.



Shark, Tiger Shark

Tiger sharks are voracious predators that will literally eat anything. It's not uncommon to find indigestible objects in their stomachs.



Spider, Giant Marine

Giant spiders are aggressive predators that use their poisonous bites to subdue or kill prey. The marine variety are rarely found far from salt water.



Spider, Phase

Phase spiders often teleport behind an attacker during combat, and will retreat temporarily to the ethereal plane if severely injured.



Thornslinger

The thornslinger plant will launch thorns at any vibration it detects within its 30-foot range. However a quiet tread and a dexterous hand can harvest the thorns safely, which can be thrown much like darts. The leaves and central stem of a thornslinger are covered with a strong adhesive sap.



Viper

These venomous snakes will attack only if they feel threatened.