

# 💡 The Genius Guide to: Simple Monster Templates



**PATHFINDER**  
ROLEPLAYING GAME COMPATIBLE

You can never have too many monster options. It's a truism of running a campaign. Not only do you want to keep your players guessing and keep creating new challenges for them, but you also very likely want a broad range of thematic choices from which to draw. It's not enough to have just a few CR 5 choices. Instead, these gamers want a few CR choices for every type, theme, and role a monster might play. After all, if you are running a campaign built around the rise of the goblinoids, you need lots of different goblins to populate your adventures. The more monsters to choose from, the better!

But sometimes you have the right monster for an adventure, and it has the exact look, the perfect theme, and the tailored feel, but you can't use it because the CR is wrong. Even if a mantichore is exactly the guardian you wanted for the Lore Vault of the City of Refuge, if you're running a CR 9 adventure, a CR 5 mantichore won't work. You do have options, of course. You could run an encounter with 4 manticores, but too much of a good thing can become monotonous and make a fight drag. You can advance the 6 HD mantichore to CR 10 by taking on about 8 HD, but that's a complicated process that involves adding new ability score increases, feats, skill points, and possibly a size increase. If you plan for characters to face the same mantichore (or its kin) several times, the effort might be worth it, but not for a single encounter.

Or, you can just tack on the "mighty" simple template, which takes less than a minute.

Simple templates are designed to require a minimum of rewriting of a creature's stat block. In essence they are all designed to work like the quick rules of the monster advancement templates presented in the *Bestiary*. In a few cases this might lead to creature statistics not matching exactly what they would be if the same monster was built from scratch. For example,

the sample missing creature, the missing lynx, is a magical beast, but its statistics are still largely those of a creature of the animal type. Although this is an inconsistency in numbers, it has no effect on how the creature plays within the game, and the extra work required to convert d8 Hit Dice to d10s isn't the best use of a GM's time. Although the type of a creature can have a real impact on play (interacting with a ranger's favored enemies, *bane* weapons, and similar game rules), and its hit point total is important, the size of its Hit Dice doesn't actually matter.

Presented within this product are six simple templates that can give GMs options to boost the CR of the monsters they need, create new threats their players aren't expecting, and multiply the usefulness of the hundreds of monsters already at their fingertips. Having a two-headed template doesn't replace the ettin, but it does allow for two-headed dragons, twin-skulled canines, and even freakish multicranial golems. The simplicity of the templates keeps them from being a chore to add, and they allow a GM to create new foes almost on the fly.

## THE TEMPLATES

The very simplicity of these templates can sometimes raise questions, such as what counts as a head-based special attack (for the two-headed template) or exactly what creatures add a diamond blade to their attacks, and which use it exclusively (for the diamond creature template). Questions like this don't have hard-and-fast answers. Indeed, they shouldn't try to have rules for every possible situation, or the templates would become so complex as to lose the descriptor of "simple." GMs should feel free to answer any such question with the answer

that best fits their needs and is easiest to apply. It doesn't matter if different answers produce creatures of slightly different power levels—the CR system is a rough tool to measure appropriate challenges, rather than a fine scale of exact numbers. The templates will produce challenges "close enough" to the projected CR no matter what corner cases the GM has to solve, which is "close enough" to place such foes in an adventure and figure out the treasure and experience players get for defeating it.

## DIAMOND

CR +2

A diamond creature is made of living diamond, making it an incredibly tough foe able to shrug off attacks and soak a tremendous amount of damage. Most diamond creatures are denizens of the deepest sections of the elemental plane of earth, or special mystic guardians created by the gods to protect special sites and holy places.

**Diamond Armor (Su):** The diamond creature's body is hard as diamond. This gives the diamond creature a bonus to natural armor equal to its Constitution or Charisma bonus (whichever is higher), and 10 temporary hit points per Hit Die. The temporary hit points are restored at dawn each day, but cannot otherwise be healed.

**Diamond Blade (Su):** The creature can grow a long, sharp blade from its diamond body. This acts as a *keen scimitar of speed* with which the creature is proficient, of the same size as the base creature, which cannot be

## DUNGEON-A-DAY TEMPLATES

Four of the templates presented here (diamond, eternal, ghul, and missing) are variants of templates that first appeared at [DungeonADay.com](http://DungeonADay.com), a website created by Monte Cook and now run by Super Genius Games, that presents a new dungeon room every weekday. The dungeon rooms are all part of a vast mega-dungeon, known as Dragon's Delve, that runs from 1st level to (eventually) 20th. As of this writing (January 2011) the dungeon runs from 1st to 15th level, and it provides hundreds of encounters subscribers can use as part of a massive dungeon-stomp campaign, or take as inspiration for new encounters in their existing games. In addition to new templates, [DungeonADay.com](http://DungeonADay.com) often presents new magic items, spells, monsters, and traps. It is an excellent resource for fans of *Pathfinder* looking for new material for their own games.

disarmed or sundered. The diamond blade gains a +1 enhancement bonus for every 5 Hit Dice of the base creature, to a maximum of a +5 bonus. If the base creature's Dexterity bonus is greater than its Strength bonus, it also gains Weapon Finesse as a bonus feat (if it doesn't already have it).

**Notes:** When calculating the diamond creature's diamond blade attack, take its base attack bonus, add its Strength or Dexterity bonus (whichever is higher), and the weapon's enhancement bonus (if any). When making a full attack routine, remember to allow the diamond creature two attacks with the diamond blade at its

full attack bonus, due to the weapon's *speed* special ability. If this is strictly superior to the base creature's existing attacks, simply remove them.

## DIAMOND SPIDER

*A clear, crystal spider the size of a man crawls silently forward, one of its front limbs ending in a wicked, curved blade.*

### DIAMOND SPIDER

CR 3

**Diamond creature** XP 800

N Medium vermin

**Init** +3; **Senses** darkvision 60 ft., tremorsense 60 ft.; **Perception** +4

#### DEFENSE

**AC** 15, touch 13, flat-footed 12 (+3 Dex, +2 natural)

**hp** 16 (3d8+3) plus 30 temporary hp

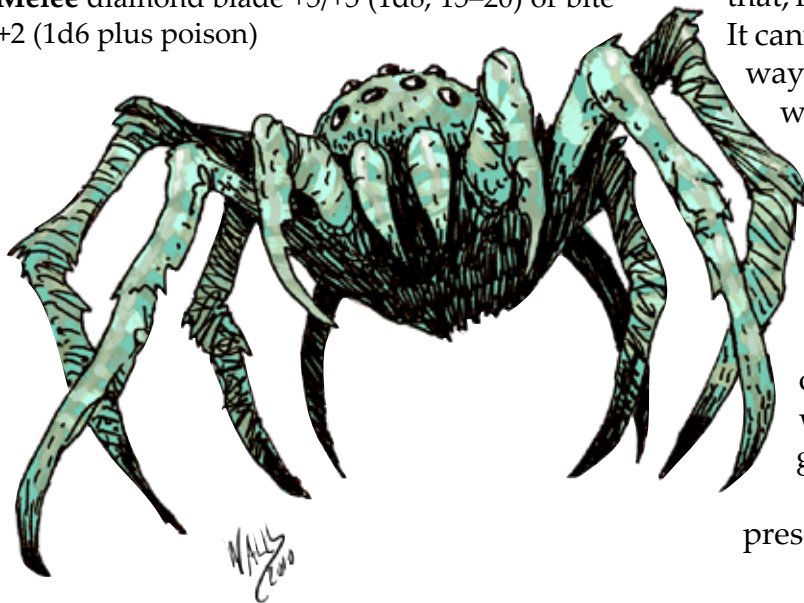
**Fort** +4, **Ref** +4, **Will** +1

**Immune** mind-affecting effects

#### OFFENSE

**Speed** 30 ft., **climb** 30 ft.

**Melee** diamond blade +5/+5 (1d8, 15–20) or bite +2 (1d6 plus poison)



#### STATISTICS

**Str** 11, **Dex** 17, **Con** 12, **Int** —, **Wis** 10, **Cha** 2

**Base Atk** +2; **CMB** +2; **CMD** 15 (27 vs. trip)

**Skills** Acrobatics +11, Climb +16, Perception +4 (+8 in webs), Stealth +7 (+11 in webs); **Racial Modifiers** +4 Perception, +4 Stealth (+8 in webs), +16 Climb

#### ECOLOGY

**Environment** any

**Organization** solitary, pair, or colony (3–8)

**Treasure** incidental

#### SPECIAL ABILITIES

**Poison (Ex)** Bite—injury; saving throw Fort DC 14; frequency 1/round for 4 rounds; effect 1d2 Strength damage; cure 1 saving throw.

Hunting spiders gain a +8 racial modifier on Acrobatics checks. All giant spiders have a +2 racial bonus on poison saving throw DCs.

## ETERNAL

CR +2

The eternal template creates a creature that, for the most part, cannot be killed. It cannot even be killed for a while, the way ghosts and lichs can. It is, in a word, eternal. The CR adjustment listed is an approximation of what additional resources a group is likely to use up when dealing with a foe that has little regard for its own well-being, and is likely to return at least once before characters realize what they are dealing with and go to plan B.

Unlike most of the options presented in this product, the eternal

template should *not* be used just to increase the CR of a foe to make it appropriate for an adventure of a higher level. Instead, this template is presented as a tool to facilitate certain kinds of storylines in ongoing campaigns. To reinforce how campaign-specific the use of this template should be, no sample monster is presented. Instead, the following advice on how to employ eternal creatures is offered as an extended guideline for GMs

If a GM needs a foe that is *nearly* immortal, he can use the eternal template, coupled with a specific weakness that overcomes it. Such a weakness might be a special material (oak wood, jade, onyx, silk, or gold all make fine choices), essentially turning the entire template into a form of super damage reduction. Or the weakness might be conceptual (only a foe that knows the creature's secret true name can slay it, or it can be killed only on a holy day of the religion it once worshiped). Mythology is full of creatures with such weaknesses, and the eternal template is a perfect way to represent some of the old "indestructible" monsters of yore. In any case, a Knowledge check that exceeds the normal monster lore DC by 10, or one coupled with research in a major library, should reveal an eternal creature's weakness.

Eternal creatures that really can't be killed should be limited in other ways. An eternal giant might be the guardian of a holy valley and be unable to leave it. An eternal dragon might sleep for all but one day every year. An eternal goblin might lack the personal power to be more than an annoyance. The GM should think about how the players are expected to overcome the eternal creature (if it is a foe), and why it hasn't taken over the world.

Of course being indestructible is a far cry from being immune to defeat. Unless it can teleport, an eternal creature can be grappled, buried alive, thrown into an indestructible prison, or banished to another plane of reality. Requiring players to use one of these methods to overcome an eternal foe is a particularly harsh encounter, but it might be reasonable for a well-equipped, savvy group of characters.

**Eternal (Su):** An eternal creature cannot be permanently killed or destroyed. If killed, turned into an undead, polymorphed, petrified, burned, or otherwise destroyed, it returns to life and normal well-being 2d6 minutes later (even if disintegrated), gaining benefits similar to a *true resurrection* coupled with a *heal*. If the location of its body has become hazardous enough to kill it instantly, when the immortal creature returns to life it teleports to the closest safe space. Eternal creatures do not age, eat, sleep, or need to breathe, and they are immune to magic versions of those effects.

The downside of being immortal is an inability to grow and change. The eternal creature never gains any levels or Hit Dice. The effects of being eternal cannot be overcome with even a *wish* spell. Unless the eternal creature has a special weakness (see above), only the direct intervention of a deity can overcome the eternal status.

## GHUL

CR +2

Related to (and possibly the origin of) lesser creatures such as ghouls and ghosts, ghuls are a powerful form of undead caused by starvation after turning to cannibalism and grave robbing. They are driven by an endless hunger for the

flesh of the living, but otherwise maintain a semblance of civilization. In appearance ghuls are faintly blue-skinned, with pale dead eyes and long, lean frames. The thin-lipped mouth of a ghul is ragged and scabbed, with a deep crimson stain affecting the skin around it, and jagged, yellow teeth within it.

**Undead:** With the exception of losing their Constitution score (see *Lifelike*, below), ghul have all the traits and immunities of undead.

**Lifelike (Su):** Though undead, ghul's bodies continue to go through the motions of life—it breathes, eats, and even rests in a form that appears to be sleeping. This makes it more difficult to determine a ghul is truly undead (+5 to all Knowledge check DCs to determine information about a ghul). It also allows a ghul to maintain a Constitution score, unlike most undead, adding its Constitution bonus to Hit Dice, Fortitude saving throws, skill checks, and the DC of innate attacks. Their apparent vitality is a necromantic illusion, however, and ghuls are as immune to biological weaknesses as any undead.

**Exhalation of Death (Su):** Ghuls carry the stench of the grave within their rotting bodies, and they can bring forth a powerful breath attack as a standard action. This breath weapon attack fills a 60-foot cone. Living creatures within the area must succeed on a Fortitude saving throw (DC 10 + 1/2 ghul's total HD + ghul's Con modifier) or be nauseated for 1d6+4 rounds and sickened for 1d6+4 minutes. A creature that successfully saves cannot be affected again by any ghul's exhalation of death for 24 hours. A *neutralize poison* spell removes the effect from a sickened

creature. Creatures with immunity to poison are unaffected, and creatures resistant to poison receive their normal bonus on their saving throws.

A creature killed while under the effects of an exhalation of death becomes a ghost (if humanoid) or zombie (if not humanoid) if it had 5 or fewer Hit Dice, and a ghul if it had 6 or more. It rises in undeath 1d6 hours after being slain. A *remove curse*, *neutralize poison*, or similar spell cast on its body during this incubation period might prevent the corpse from becoming undead. The caster of such a spell must make a caster level check (DC 10 + HD of ghul that affected the target with exhalation of death), and on a successful check the corpse does not become an undead.

**Paralysis (Ex):** Any creature hit by a ghul's melee attack (even if the ghul is using a weapon) is exposed to a paralysis effect. This special attack renders the victim immobile. Paralyzed creatures cannot move, speak, or take any physical actions. The creature is rooted to the spot, frozen and helpless. Paralysis works on the body, and a target can resist it with a Fortitude saving throw (DC 10 + 1/2 ghul's total HD + ghul's Con modifier). On a failed saving throw, the target is paralyzed for 1d4+1 rounds. Unlike *hold person* and similar effects, a paralysis effect does not allow a new saving throw each round. A winged creature flying in the air at the time that it is paralyzed cannot flap its wings and it falls. A swimmer can't swim and might drown.

**Notes:** The ghul can be applied to any corporeal creature that isn't already undead (or lifeless, such as many golems). The lifelike property makes them excellent

for situations where an undead is trying to conceal its nature, and the fact you don't have to replace Constitution modifiers with Charisma modifiers in the stat block makes it much faster to create than a vampire or similar undead.

## DRAGHUL

The long, lean neck of the emaciated, pale blue dragon's body uncurls to reveal a head dominated by a pair of glairing, milky eyes and rows of teeth jutting forth from bright crimson gums.

### DRAGHUL

CR 12

Adult white dragon ghul creature XP 19,200  
CE Large undead (cold)  
Init +5; Senses dragon senses, snow vision; Perception +22  
Aura cold (5 ft., 1d6 cold damage), frightful presence (180 ft., DC 17)

### DEFENSE

AC 27, touch 10, flat-footed 26 (+1 Dex, +17 natural, -1 size)  
hp 149 (13d12+65)  
Fort +13, Ref +9, Will +10  
DR 5/magic; Immune cold, paralysis, sleep, undead traits; SR 21  
Weaknesses vulnerability to fire

### OFFENSE

Speed 30 ft., burrow 30 ft., fly 200 ft. (poor), swim 60 ft.  
Melee bite +20 (2d6+10/19-20 plus paralysis), 2 claws +19 (1d8+7 plus paralysis), 2 wings +14 (1d6+3 plus paralysis), tail slap +14 (1d8+10 plus paralysis)  
Space 10 ft.; Reach 5 ft. (10 ft. with bite)  
Special Attacks breath weapon (40-ft. cone, DC 21, 12d4 cold), exhalation of death (60-ft. cone, DC 21), paralysis (DC 21)

### Spell-Like Abilities (CL 13th)

At will—fog cloud, gust of wind

### Spells Known (CL 1st)

1st (4/day)—mage armor, shield

0-level (at will)—dancing lights, detect magic, ray of frost, mending

### STATISTICS

Str 25, Dex 12, Con 21, Int 12, Wis 15, Cha 12

Base Atk +13; CMB +21; CMD 32 (36 vs. trip)

Feats Alertness, Flyby Attack, Improved Critical (bite), Improved Initiative, Power Attack, Vital Strike, Weapon Focus (bite)

Skills Fly +11, Intimidate +17, Knowledge (arcana) +17, Perception +22, Spellcraft +17, Stealth +13, Swim +31

Languages Common, Draconic

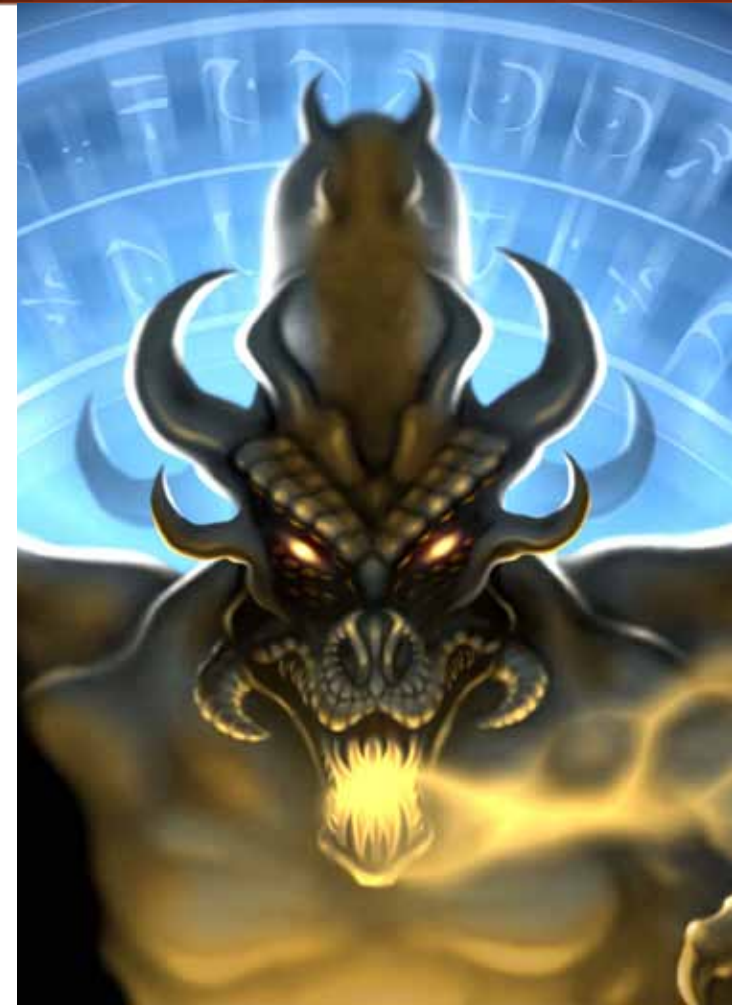
SQ icewalking, ice shape

## MIGHTY

CR +5

A mighty creature is a stronger, more powerful version of a typical example of its kind. The mighty template is a great way to create pack leaders, chieftains, warlords, and feared albino oddities of great size and speed that terrorize countrysides and trade routes. In many ways the mighty template is a step up from the "advanced" template found in the *Bestiary*.

**Mighty:** A mighty creature gains +10 bonus hit points per Hit Die (minimum +50), +5 dodge bonus to AC, +5 bonus to initiative, all saving throws, damage, ability checks, and skill checks. It also gains a +30-foot bonus to its speed (to a maximum of double), +10 to all attack rolls and CMB, and +15 to CMD. The saving throw DC for any ability or spell of a mighty creature is increased by 7.



**Damage Reduction (Ex):** A mighty creature shrugs off a part of the mundane damage it takes. It gains DR 1/— for every three full Hit Dice it possesses. This overlaps (does not stack with) any other DR the base creature might have.

**Immunities:** A mighty creature is immune to mind-affecting abilities, sleep, and paralysis.

**Spell Resistance:** A mighty creature ignores a percentage of the spells that would affect a lesser creature. It might have a mystic ability

to negate such magic, or the spell resistance might represent a “super saving throw” — the mighty creature’s ability to shrug off damage, focus past enchantments, and dodge spells with breathtaking speed. The mighty creature’s SR is equal to the base creature’s CR +12.

## MIGHTY CYCLOPS

*A single huge eye stares from the forehead of this twelve-foot-tall giant. Above this sole orb, a curved horn grows from the creature’s massive brow. Two shaggy, oxlike legs that end in huge black hooves support its heavy frame.*

### MIGHTY CYCLOPS

CR 10

Mighty creature XP 9,600  
NE Large humanoid (giant)  
**Init** +4; **Senses** low-light vision; Perception +11

#### DEFENSE

**AC** 24, touch 13, flat-footed 24 (+4 armor, -1 Dex, +7 natural, -1 size, +5 dodge)  
**hp** 165 (10d8+20+100)  
**Fort** +14, **Ref** +7, **Will** +9  
**DR** 3/—; **Defensive Abilities** ferocity; **Immune** mind-affecting, paralysis, sleep; **SR** 17

#### OFFENSE

**Speed** 60 ft.  
**Melee** greataxe +21/+16 (3d6+12/x3)  
**Ranged** heavy crossbow +15 (2d8+5/19–20)  
**Space** 10 ft.; **Reach** 10 ft.

#### STATISTICS

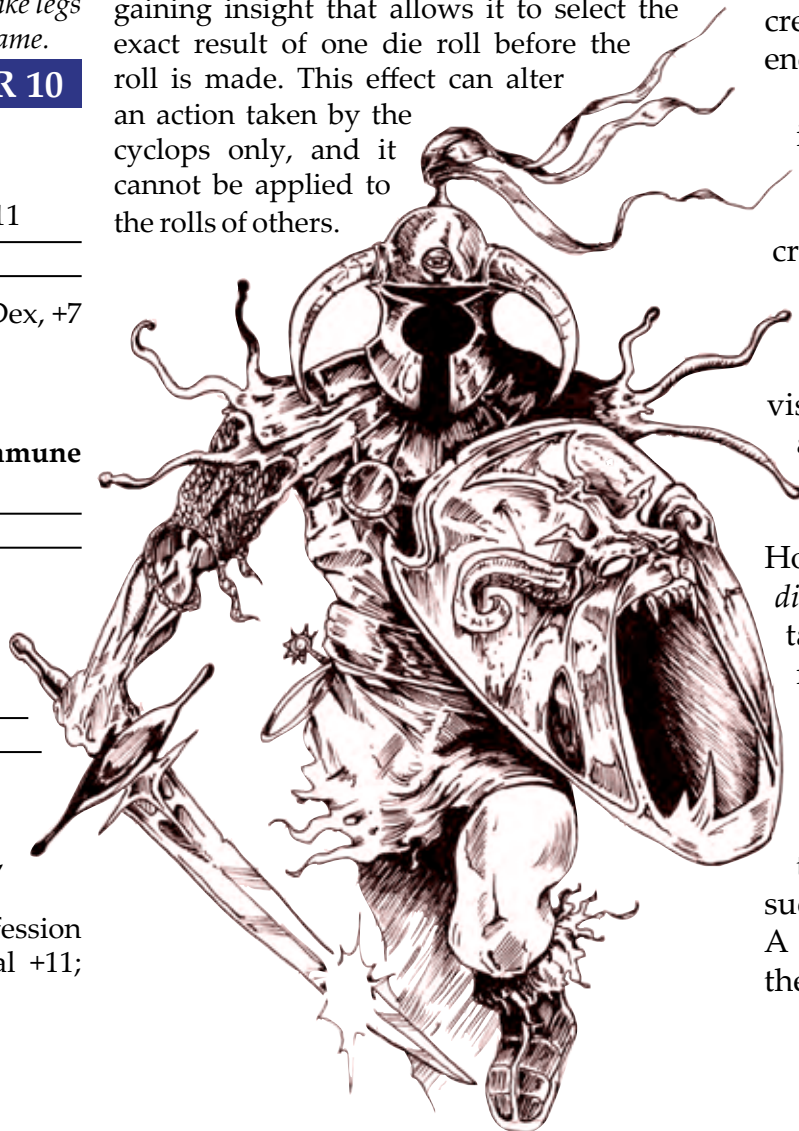
**Str** 21, **Dex** 8, **Con** 15, **Int** 10, **Wis** 13, **Cha** 8  
**Base Atk** +17; **CMB** +23; **CMD** 37  
**Feats** Alertness, Cleave, Great Cleave, Improved Bull Rush, Power Attack  
**Skills** Intimidate +14, Perception +16, Profession (soothsayer) +15 Sense Motive +10, Survival +11;  
**Racial Modifiers** +8 Perception  
**Languages** Common, Cyclops, Giant  
**SQ** flash of insight

#### ECOLOGY

**Environment** any temperate or tropical  
**Organization** solitary  
**Treasure** standard (hide armor, Large greataxe, Large heavy crossbow, other treasure)

#### SPECIAL ABILITIES

**Flash of Insight (Su)** Once per day as an immediate action, a cyclops can peer into an occluded visual spectrum of possible futures, gaining insight that allows it to select the exact result of one die roll before the roll is made. This effect can alter an action taken by the cyclops only, and it cannot be applied to the rolls of others.



## MISSING

CR +3

The missing template can be added to any corporeal creature to represent a creature with innate *displacement* and *invisibility* abilities. Such creatures might be the result of arcane experimentation by mad wizards, represent a new type of magical creature, or be the result of a mystic accident when creatures are exposed to powerful planar energies.

**Type:** If the creature is an animal, it becomes a magical beast. If it is a humanoid, it becomes a monstrous humanoid. Do not change the base creature’s statistics to represent the new type. All other creatures retain the type of the base creature.

**Displacement (Su):** Even when visible, the missing creature appears to be about 2 feet away from its true location. The creature benefits from a 50% miss chance as if it had total concealment. However, unlike actual total concealment, *displacement* does not prevent enemies from targeting the creature normally. *True seeing* reveals the creature’s location accurately.

**Evasion (Ex):** A missing creature can avoid even magical and unusual attacks with great agility. If it makes a successful Reflex saving throw against an attack that normally deals half damage on a successful save, it instead takes no damage. A helpless missing creature does not gain the benefit of evasion.

**Invisibility (Su):** Whenever the creature does not attack for 1 full round, it becomes *invisible* (as the spell) as a free action. In addition to becoming visible if it attacks, the missing creature becomes visible if it takes hit point damage. If made visible by this second method, the missing creature becomes invisible again at the beginning of its next turn (though it might immediately become visible by attacking on that turn).

**Shadowed (Su):** A missing creature gains a bonus to Stealth checks equal to its Hit Dice, and it can make Stealth checks even when observed or in normal or bright light.

## MISSING LYNX

*A mighty growl issues from the air, but the great cat making it remains elusive—no more than a shadow at the edge of your vision.*

### MISSING LYNX

CR 5

Leopard missing creature XP 1,600  
N Medium magical beast  
**Init** +4; **Senses** low-light vision, scent; **Per** +5

#### DEFENSE

**AC** 15, touch 14, flat-footed 11 (+4 Dex, +1 natural)

**hp** 19 (3d8+6)

**Fort** +5, **Ref** +7, **Will** +2

**Defensive Abilities** displacement, evasion, invisibility

#### OFFENSE

**Speed** 30 ft., climb 20 ft.

**Melee** bite +6 (1d6+3 plus grab), 2 claws +6 (1d3+3)

**Special Attacks** pounce, rake (2 claws +6, 1d3+3)

#### STATISTICS

**Str** 16, **Dex** 19, **Con** 15, **Int** 2, **Wis** 13, **Cha** 6  
**Base Atk** +2; **CMB** +5 (+9 grapple); **CMD** 19 (23 vs. trip)

**Feats** Skill Focus (Stealth), Weapon Finesse

**Skills** Acrobatics +8, Climb +11, Perception +5, Stealth +14 (+18 in undergrowth); **Racial Modifiers** +4 on Stealth in undergrowth, +3 to all Stealth.

**SQ** Shadowed

#### ECOLOGY

**Environment** any forest

**Organization** solitary or pair

**Treasure** none



## TWO-HEADED

CR +1 OR +2, SEE BELOW

A two-headed creature is one skull up on a one-headed version of the same thing. It might be a freak of nature (possibly showing signs of deformity), a superior individual marked by the gods (often showing unusual coloring or marks upon it), or an example of a separate, if related, species (as ettins are to ogres and hill giants).

Two-headed creatures gain a bit more offensive power, but aren't any harder to kill than their monocranial cousins. Thus most are +1 CR, though those with breath weapons or gaze attacks (anything for which the Two Heads are Better ability applies) become +2 CR due to the increased danger.

**Double Bite (Ex):** If the base creature has a bite attack, it now has two bite attacks.

**Improved Multiple Attacks (Ex):** Because the two-headed creature has two brains, it can easily control multiple attacks without penalty. Two-headed creatures never take penalties to attack or damage from making multiple attacks. As a standard action, the creature can make two attacks. If these two attacks are the same primary attack (two bites, two weapon attacks, two claws) they both add  $\{\{\$\text{ts}\}\}1\ 1/2$  the creature's Strength bonus to damage.

**Two Heads are Better:** A two-headed creature with a special attack based on the head (usually a breath weapon or gaze attack) has two special options. First, it can use just one head to make one of those attacks that normally requires a standard action as a swift action. Alternatively, it can use both heads for the attack, taking a standard action, and increasing

any attack roll or saving throw DC of the special attack by +2. If these attacks cannot normally be made every round, the delay before they can be used again is halved.

**Bonus Feats:** Two-headed creatures get Alertness and Combat Reflexes as bonus feats.

## TWO-HEADED WINTER WORG

*This bear-sized wolf has two heads with slavering jaws, white fur, and a rime of frost around its muzzle. Its eyes are pale blue, almost white in color.*

### TWO-HEADED WINTER WORG CR 7

Wolf two-headed creature XP 3,200

NE Large magical beast (cold)

**Init** +5; **Senses** darkvision 60 ft., low-light vision, scent; **Perception** +13

#### DEFENSE

**AC** 17, touch 10, flat-footed 16 (+1 Dex, +7 natural, -1 size)

**hp** 57 (6d10+24)

**Fort** +9, **Ref** +6, **Will** +3

**Immune** cold

**Weaknesses** vulnerability to fire

#### OFFENSE

**Speed** 30 ft.

**Melee** bite +10/+10 (1d8+7 plus 1d6 cold and trip)

**Space** 10 ft.; **Reach** 5 ft.

**Special Attacks** breath weapon (every 1d2 rounds: standard action, 15-ft. cone, 6d6 cold damage, Reflex half DC 19; or swift action, 15-ft. cone, 6d6 cold damage, Reflex half DC 17)

#### STATISTICS

**Str** 20, **Dex** 13, **Con** 18, **Int** 9, **Wis** 13, **Cha** 10

**Base Atk** +6; **CMB** +12; **CMD** 23 (27 vs. trip)

**Feats** Alertness (B), Combat Reflexes (B), Improved Initiative, Run, Skill Focus (Perception)

**Skills** Perception +13, Sense Motive +3, Stealth +4 (+10 in snow), Survival +5; **Racial Modifiers** +2 Perception, +2 Stealth (+8 in snow), +2 Survival  
**Languages** Common, Giant

#### ECOLOGY

**Environment** cold forests and plains

**Organization** solitary, pair, or pack (6–11)

**Treasure** standard

Winter wolves are larger, smarter, more ferocious variants of worgs with white fur and a deadly breath weapon.

A typical winter wolf is 8 feet long, stands 4-1/2 feet tall at the shoulder, and weighs about 450 pounds. Winter wolves often ally themselves with frost giants, hill giants, and other large humanoids, serving entire tribes of giants as both scouts and guards.

#### VARIANTS: MULTI-HEADED

The same ideas that make the two-headed template can be expanded for three-headed, four-headed, even eight-headed monsters. The CR does go up, though not as dramatically (an additional +1 CR for 3–4 headed, +2 for 5–7 heads, +3 CR for 8–12 heads). Add bite attacks, racial bonuses to Perception, and bonuses to head-based special attacks and to saving throw DCs equal to the additional heads you bolt on to the base creature.





WE ERR ON THE SIDE OF AWESOME!

## CREDITS

**Designer:**

Owen K.C. Stephens

**Editor:**

Miranda Horner

**Proofreader:**

Jeremy Miller

**Cover Art:**

Joseph Calkins and Cerebus Illustrations

**Interior Art:**

Empty Room Studios, Joseph Calkins and Cerebus Illustrations, Nathan Winborn, and OWC

**Graphic Design and Typesetting:**

Anthony Kenniston

**Creative Director:**

Stan!

**Produced By:**

Super Genius Games  
www.supergeniusgames.com

Contents ©2011 Owen K.C. Stephens  
Used with permission.

For more information about Super Genius Games and our upcoming products, follow us on Facebook:

www.facebook.com/supergeniusgames, via Twitter: Owen: @Owen\_Stephens, Stan: @stannex, and/or Super Genius Games: @sSuperGeniusRPG or at our Yahoo Group: <http://games.groups.yahoo.com/group/super-genius/>

All logos are the trademark of  
Super Genius Games All rights reserved.

Published Under the SRD, OGL, and d20 (v 3) License ©2000, Wizards of the Coast, Inc.

Compatibility with the Pathfinder Roleplaying Game requires the Pathfinder Roleplaying Game from Paizo Publishing, LLC. See <http://paizo.com/pathfinderRPG> for more information on the Pathfinder Roleplaying Game. Paizo Publishing, LLC does not guarantee compatibility, and does not endorse this product.

Pathfinder is a registered trademark of Paizo Publishing, LLC, and the Pathfinder Roleplaying Game and the Pathfinder Roleplaying Game Compatibility Logo are trademarks of Paizo Publishing, LLC, and are used under the Pathfinder Roleplaying Game Compatibility License. See <http://paizo.com/pathfinderRPG/compatibility> for more information on the compatibility license.

DESIGNATION OF PRODUCT IDENTITY: The Super Genius Games (SGG) and OtherWorld Creations (OWC) company names and logos; the "Genius Guide To: Simple Monster Templates" name and logo; all artwork, backgrounds, and logos; all trade dress, and graphic design elements.

DECLARATION OF OPEN CONTENT: All game mechanics, proper names of classes, prestige classes, archetypes, feats, skills, spells, magic items, monsters, rituals, artifacts AND OR the names of abilities presented within this book are Open Game Content as described in Section 1(d) of the License.

OPEN GAME LICENSE Version 1.0a

The following text is the property of Wizards of the Coast, Inc. and is Copyright 2000 Wizards of the Coast, Inc ("Wizards"). All Rights Reserved.

1. Definitions: (a) "Contributors" means the copyright and/or trademark owners who have contributed Open Game Content; (b) "Derivative Material" means copyrighted material including derivative works and translations (including into other computer languages), potation, modification, correction, addition, extension, upgrade, improvement, compilation, abridgment or other form in which an existing work may be recast, transformed or adapted; (c) "Distribute" means to produce, license, rent, lease, sell, broadcast, publicly display, transmit or otherwise distribute; (d) "Open Game Content" means the game mechanic and includes the methods, procedures, processes and routines to the extent such content does not embody the Product Identity and is an enhancement over the prior art and any additional content clearly identified as Open Game Content by the Contributor, and means any work covered by this License, including translations and derivative works under copyright law, but specifically excludes Product Identity. (e) "Product Identity" means product and product line names, logos and identifying marks including trade dress; artifacts; creatures characters; stories, storylines, plots, thematic elements, dialogue, incidents, language, artwork, symbols, designs, depictions, likenesses, formats, poses, concepts, themes and graphic, photographic and other visual or audio representations; names and descriptions of characters, spells, enchantments, personalities, teams, personas, likenesses and special abilities; places, locations, environments, creatures, equipment, magical or supernatural abilities or effects, logos, symbols, or graphic designs; and any other trademark or registered trademark clearly identified as Product identity by the owner of the Product Identity, and which specifically excludes the Open Game Content; (f) "Trademark" means the logos, names, mark, sign, motto, designs that are used by a Contributor to identify itself or its products or the associated products contributed to the Open Game License by the Contributor (g) "Use", "Used" or "Using" means to use, Distribute, copy, edit, format, modify, translate and otherwise create Derivative Material of Open Game Content. (h) "You" or "Your" means the licensee in terms of this agreement.

2. The License: This License applies to any Open Game Content that contains a notice indicating that the Open Game Content may only be Used under and in terms of this License. You must affix such a notice to any Open Game Content that you Use. No terms may be added to or subtracted from this License except as described by the License itself. No other terms or conditions may be applied to any Open Game Content distributed using this License.

3. Offer and Acceptance: By Using the Open Game Content You indicate Your acceptance of the terms of this License.

4. Grant and Consideration: In consideration for agreeing to use this License, the Contributors grant You a perpetual, worldwide, royalty-free, non-exclusive license with the exact terms of this License to Use, the Open Game Content.

5. Representation of Authority to Contribute: If You are contributing original material as Open Game Content, You represent that Your Contributions are Your original creation and/or You have sufficient rights to grant the rights conveyed by this License.

6. Notice of License Copyright: You must update the COPYRIGHT NOTICE portion of this License to include the exact text of the COPYRIGHT NOTICE of any Open Game Content You are copying, modifying or distributing, and You must add the title, the copyright date, and the copyright holder's name to the COPYRIGHT NOTICE of any original Open Game Content You Distribute.

7. Use of Product Identity: You agree not to Use any Product Identity, including as an indication as to compatibility, except as expressly licensed in another, independent Agreement with the owner of each element of that Product Identity. You agree not to indicate compatibility or co-adaptability with any Trademark or Registered Trademark in conjunction with a work containing Open Game Content except as expressly licensed in another, independent Agreement with the owner of such Trademark or Registered Trademark. The use of any Product Identity in Open Game Content does not constitute a challenge to the ownership of that Product Identity. The owner of any Product Identity used in Open Game Content shall retain all rights, title and interest in and to that Product Identity.

8. Identification: If you distribute Open Game Content You must clearly indicate which portions of the work that you are distributing are Open Game Content.

9. Updating the License: Wizards or its designated Agents may publish updated versions of this License. You may use any authorized version of this License to copy, modify and distribute any Open Game Content originally distributed under any version of this License.

10. Copy of this License: You MUST include a copy of this License with every copy of the Open Game Content You Distribute.

11. Use of Contributor Credits: You may not market or advertise the Open Game Content using the name of any Contributor unless You have written permission from the Contributor to do so.

12. Inability to Comply: If it is impossible for You to comply with any of the terms of this License with respect to some or all of the Open Game Content due to statute, judicial order, or governmental regulation then You may not Use any Open Game Material so affected.

13. Termination: This License will terminate automatically if You fail to comply with all terms herein and fail to cure such breach within 30 days of becoming aware of the breach. All sublicenses shall survive the termination of this License.

14. Reformation: If any provision of this License is held to be unenforceable, such provision shall be reformed only to the extent necessary to make it enforceable.

15. COPYRIGHT NOTICE

Open Game License v 1.0a Copyright 2000, Wizards of the Coast, Inc.  
*System Reference Document*. Copyright 2000, Wizards of the Coast, Inc.; Authors Jonathan Tweet, Monte Cook, Skip Williams, based on material by E. Gary Gygax and Dave Arneson.

*Pathfinder RPG Core Rulebook*. Copyright 2009, Paizo Publishing, LLC; Author: Jason Bulmahn, based on material by Jonathan Tweet, Monte Cook, and Skip Williams.

*The Book of Experimental Might*. Copyright 2008, Monte J. Cook. All rights reserved.

*Tome of Horrors*. Copyright 2002, Necromancer Games, Inc.; Authors: Scott Green, with Clark Peterson, Erica Balsley, Kevin Baase, Casey Christofferson, Lance Hawvermale, Travis Hawvermale, Patrick Lawinger, and Bill Webb; Based on original content from TSR.

**The Genius Guide To: Simple Monster Templates**. Copyright 2011, Super Genius Games. Author: Owen K.C. Stephens