

The Big Book of Kitraxa



The definitive guide to the Kitraxian species.

By Arcturax

This written work is © 2012 by Arcturax (and his player). Artwork inside is © their respective artists.
The Kitraxian species is © 2001 by Arcturax. All rights are reserved.

Cover art is © Keshikins (<http://www.furaffinity.net/user/keshikins/>)

Photo of Sagittarius is © Arcturax (<http://www.furaffinity.net/user/arcturax/>)

Male Kitraxian is © HornedStorm (<http://www.furaffinity.net/user/hornedstorm/>)

Kitraxian Constellation is © Unyko (<http://www.furaffinity.net/user/unyko/>)

Kitraxian flag image is © Merinasanith.

Table of Contents:

Notes

Chapter 1: Location in the universe

Chapter 2: Origin and evolution

Chapter 3: Anatomy

Chapter 4: History of Civilization

Chapter 5: Culture and Customs

Chapter 6: Kitraxians Relations with the People of Earth

Notes:

All references to time will be in Earth standards such as earth years and earth hours except where noted. Distances and masses will also be measured in kilometers and kilograms except where noted. Light years are based off the Earth standard for a year.

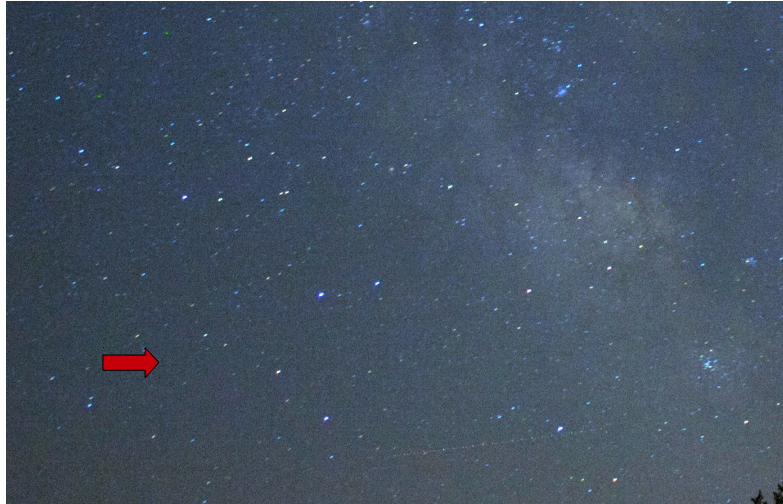
Most comparisons to intelligent life on earth will be to humans as they are the most average sample of intelligent life on Earth.

The history of Earth is left intact up until about the year 2000 where it diverges for the first contact part of the story. There is really no way to make the Kitraxian version of history jive with every other "off-world" or even on world furry group's world story, so I won't even try. I don't stick hard to this for RP purposes, so don't worry about it. Most of Kitraxian history here is to give the species a back story and the first contact part is there as a potential plot point for other stories I may write someday. My aim was just for realism, to make a "real" world for my people. As the first, last and only member of a species that never existed, I feel a need to give them a story, and this is it. Any resemblance to persons living, dead or undead is purely coincidental and you probably shouldn't get that worked up over a piece of fiction anyway.

Chapter 1: Location in the universe

The Kitraxian home world is 193.72 light years from Earth in the direction of the constellation Sagittarius. Both the star and the planet bear the name Kitraxa on astronomers maps. Kitraxa is the name the Kitraxians gave to their home world, and eventually their race. Humans and other earthbound creatures call them Kitraxians, much in the way hypothetical people from Mars would have been called Martians.

The Kitraxian star lies not far from line of sight from Psi Sagittarius, in the otherwise somewhat empty appearing area between the galactic core and the constellation Capricornus. While appearing empty to the eye, the region is littered with smaller and dimmer stars similar to Earth's sun and countless other types of dwarf star, many ripe for the bearing of habitable planets. This same region of space is close to the source of famed "Wow!" signal detected from Columbus Ohio in August 1977. This is the first and only space signal detected from Earth that matches the expected parameters from an extraterrestrial transmission. Because the actual data of the transmission was not recorded and only its signal strength, no one has been able to determine if the signal came from a Kitraxian source, or from yet another undiscovered race in the region.



The Kitraxian home world is the fourth out from a K0 spectral class yellow-orange dwarf star about .82 times the mass of the sun and 46% of its luminosity. The Kitraxian home world has a mass 1.1 times that of earth, but is less dense and thus has a larger radius of 1.13 earths which results in slightly lower gravity (.95 g). As seen from Earth, the Kitraxian sun is a very dim 9th magnitude star.

Like Earth, Kitraxa is mostly ocean with only one third of the planet being landmass, making it a curious "twin" of Earth in that respect. Like Earth it also has an oxygen (22%) nitrogen(77%) and the remaining 1% being carbon dioxide and other trace gases. The atmosphere is a result of a similar path to life that occurred on Earth, starting with methane and hydrogen metabolizing organisms which later were supplanted by oxygen generating microbes that used photosynthesis as their primary way of generating energy, followed by a split between plants and animal cells at some point. This has lead to remarkably similar forms of evolution on Kitraxa, often paralleling some of the major developments in the evolution of life on Earth.

The planet has no large moon, but instead a system of two large rings and 15 smaller and much fainter ones. The main ring system is shepherded by two moons which form little more than bright points in the sky among the spectacular ring system. The rings are most noticeable at mid latitudes, less at high latitude and at the equator.

The night sky is filled with bright stars, the brightest being the stars Nunki and Kaus Australis which shine as brightly as Sirius does in the skies of Earth. Earth's home star Sol as seen from Kitraxa

is nearly lost as an easily overlooked 8th magnitude star nestled among the many scrambled stars of Gemini and Taurus.

The day/night cycle on Kitraxa is shorter, at only 19 hours, 22 minutes for a day. The year is only 211 days long due to the planet's closer orbit to its star and sits a little more towards the outer edge of the habitable zone than Earth does. The sun is larger in the sky due to closer orbit, but is dimmer due to its lower output and an orange tint in its hue. While still dangerous to stare at, it is much easier on Kitraxian eyes than the brilliant yellow glare of Earth's sun. The planet has a slightly thicker atmosphere, at 1.185 atmospheres at sea level, but the dimmer sun and position in the habitable zone renders Kitraxa a cooler planet on average. The axial tilt is only 16 degrees, making the seasons less severe than on Earth and this along with the thicker atmosphere and large oceans helps to prevent runaway albedo that would result in frequent ice ages. The ice ages cycle on Kitraxa is similar to that on Earth, with occasional periods of icing that are usually ended by volcanism or years of enhanced solar output.

The Kitraxian sun is slightly more prone to flare than Sol, but the thicker atmosphere and a healthy ozone layer protects the inhabitants from the worst of any flare activity. The Kitraxian sun runs on an 8 year solar activity cycle as opposed to the 11 year cycle of Sol. Auroras are spectacular in the extreme north and south, more than making up for poor visibility of the planet's rings at those latitudes.

Geographically, the land is divided into four continents with none being present at either pole. One continent reaches deep into the south, but the north is largely ocean and most of the land is equatorial or tropical with one continent being centered on low northern latitudes and extending up to 50 degrees. Due to less energy output by the Kitraxian sun, even the tropics are more temperate with large broad leaf rain forest and swamp being the most common habitat. There are also some less common plain and desert regions, the plains being the spawning point for the litter bearing pack hunters that birthed the Kitraxian race and nurtured them until they evolved enough intelligence to adapt to the more common types of habitat.

There are a number of mountain ranges and islands and volcanism is as common as it is on Earth. The planet has 22 distinct plates, in line with what Earth has, making the two planets very similar in that respect. Earth has a slightly higher surface metallurgic content due to the late heavy bombardment and the collision that formed the Earth's moon. Kitraxa's own moon was shattered early on by an impact that left its rings behind and much of the planet's metals come from what fell onto the planet. The rings are not thick but are noticeable even in the daytime and will partially dim the sun as it passes through them.

While there was an event similar to the late heavy bombardment in the Kitraxa system, it was far less severe than what occurred in our solar system. The lack of a large gas giant near the inner asteroid belt may have had a lot to do with this.

The Kitraxian system has a total of 7 planets. The first planet is a hot Neptune class planet, weighing in at 16 Earth masses. The second is a hot super Earth with 9 Earth masses and a high pressure atmosphere similar to Venus only more layered with a hydrogen envelope atop the carbon dioxide and methane layers. The third is a hot Mars sized object that lies barely within the inner habitable zone but is bone dry and lost much of its surface and atmosphere due to a spectacular collision early in its history. Kitraxa is the fourth and is remarkably similar to Earth in size, mass and elemental composition. The fifth planet is about 1.8 times the mass of Jupiter and has a minor ring system as well and has helped shepherd the asteroids that lie between it and Kitraxa. Lying at 7 AU, it leaves a much

larger gap between it and Kitraxa than exists between Mars and Jupiter. The size of the field suggests that at least two Mars size worlds collided there at some point. The sixth planet is an icy Neptune class planet 30 times the mass of Earth and the seventh is a 2.8 Earth mass ice world with multiple moons sitting at nearly 23 AU from Kitraxa's sun with a thick but cold nitrogen atmosphere and a large amount of carbon compounds similar to those found on Titan. Beyond that is a rather large secondary asteroid belt with numerous dwarf planet class objects similar to Pluto in appearance and makeup.

Chapter 2: Origin and evolution

The Kitraxian home world formed out of a cloud of gas and rocks about 5.2 billion years ago, with life forming about 4.8 billion years after the formation. This leg up on life compared to Earth still did not produce intelligence until just a few thousand years before it formed on Earth. This suggests that intelligent life is a rare commodity and that it was sheer luck that the Kitraxian race exists in the same time frame as intelligent life on Earth.

The Kitraxian race began on the chilly plains of southern Kitraxa as a quadruped, litter bearing pack hunter. Looking more like a large eared wolf or fox with stubby wings and the ability to glide short distances, they hunted their way across the plains and foggy marshes and sea cliffs of the southern ocean for about five million years before an ice age forced them to forage into the equatorial forests to survive.

Being forced to deal with trees caused a change over time that caused an evolution towards greater dexterity and the ability to rear up on hind paws and jump upwards as needed to get prey. Kitraxians are almost totally carnivorous and only find a few types of plants palpable. Part of their survival ability includes having three stomach chambers. One is a food crop, meant to store large chunks of meat when the stomach is already full, for later digestion in the long times between a good kill. The need to quickly swallow large chunks of meat, or even small animals whole brings the need for an internal grinding system. The Kitraxians developed an organ similar to the gizzard in a bird, swallowing smooth river stones to aid in the crushing of bones and other tough organic materials.

Kitraxian teeth are pointed with only four smallish molars in the back for crushing and grinding seeds and fruits when meat is scarce. This ability to survive on scavenged fruits in the bush helped them survive when hunting was poor and to make up for any nutritional deficits when ideal game could not be found. Like many creatures on Kitraxa, the Kitraxians developed a powerful anti-coagulant in their saliva, a form of toxin that prevents the clotting of blood. Bites from Kitraxians will bleed profusely without stopping unless an antidote is administered or enough time passes for the body to neutralize the toxin. As a defense against other creatures or rivals wielding this same weapon, Kitraxians can secrete a powerful coagulant from their tongues by will. This acts as an antidote to their own anti coagulant and can be used to stop profuse bleeding. There is significant interest in these Kitraxian compounds from Earth scientists since they could both be highly useful in the medical field.

Early forms of the Kitraxians bore live litters much in the same way as mammals do on Earth. In fact the many similarities in Kitraxian sexual development suggest that this is a highly successful and common form of reproduction throughout the galaxy. While most births are now singles, there is a much higher twinning rate among Kitraxians than human beings and some of Earth based fur-kind. Females and males still have six breasts, though on the males all are small and hidden under the fur along the chest. With females, the top two are fully formed, with the other four being small like the all of the male versions and vestigial in function. When still litter bearing, the nipples were all along the chest rather than the lower part of the body unlike most litter bearing creatures on earth.

Kitraxian intelligence began to rapidly develop about 60,000 years ago, culminating in the first developments of civilization 16,000 years ago. Surviving several disasters, including as cometary fragment hit in the northern oceans 11,000 years ago and a period of super volcanism 6,000 years ago, the Kitraxians eventually developed beyond hunter gatherer communities and formed cities and spoken and written language, art, music and eventually, science. Despite undergoing a brutal world war 258

years ago as of the writing of this book, the Kitraxians become a fully space faring race about 210 years ago beginning with the permanent colonization of one of their small moons. Current estimates put them at about 200 years of scientific, cultural and technological advancement over Earth.

Chapter 3: Anatomy

General appearance

Kitraxians are bipedal winged creatures which range from a normal of 1.5-2.0 meters tall. Average weight is about 90 kg, slightly heavier than human average under Earth gravity due to wing weight and bone density. Kitraxians have a basic humanoid shape, with two legs with a knee joint, two arms with a single elbow joint and five fingers on each hand and four toes on each foot. The main difference from human shape is in the head, wings and tail. The head is more like that of a fruit bat with a nose structure that resembles that of the Flying Fox. The ears are large and can swivel independently. The mouth is more of a muzzle like that on a fox or a dog or a bat. A sharp pair of fangs peek out from under the upper lip and fur of most Kitraxian muzzles, giving them a somewhat feral appearance. The rest of the teeth are sharp and made for grasping and tearing except for a set of four molars on each side (two at the top, two at the bottom) of the back of the jaw. Kitraxian eyes are generally green, blue, purple or brown and have slitted pupils like a cat or a fox.



Image: Kitraxian Male

Kitraxians are furred with dark black fur everywhere except at the tail tip, the shoulders and the

arms just below the elbow joint. The tail is generally about 3 feet long and is used for balance. The tail is tipped with a flame shaped brilliant orange (see notes) fluff of fur. The shoulders bear large “poofs” of the same brightly orange fur as the tail and has been used for display when attracting a mate or as a sign of status throughout Kitraxian history. The color can range from a lighter orange to a dark almost orange red. At the arms, the fur ends just below the elbow joint and gives away to a scaled appearance similar to a birds legs and feet. The top of the arms and legs are ridged and the underside is less so with a smoother appearance. Each finger and toes is tipped with a claw. The finger claws are straight, the claws of the toes are slightly hooked downwards.

Sight:

Kitraxian eyes are extremely light sensitive and can see a lighty larger range of the spectrum than the average human can. They can see slightly into the infrared and some near ultraviolet wavelengths. Kitraxians have exceptional night vision and can navigate by starlight alone. In daylight the pupil closes nearly to a slit, limiting vision, particularly peripheral vision. On Earth, the brighter yellow sun of earth renders Kitraxians nearly blind from the glare at summer noontime. Most will wear sunglasses for comfort and protection when visiting Earth and outdoors during the daytime.

Hearing:

Kitraxian hearing exceeds human hearing in every way. Their hearing is highly directional and they can swivel their ears to “zoom” in on a sound, the ears acting as sonic concentrators. Kitraxians can hear as low as humans and up to 75 kHz at the high range. Kitraxians are capable of a bat-like sonar though it is more for navigation in complete darkness than hunting. This adaptation allowed them to hunt in the heavy fogs of the plains and marshes they evolved in. In conversation Kitraxians will swivel both ears forwards if you are facing them. If off to the side one ear will swivel to focus on the speaker leaving the other free to scan the room. Kitraxians can also press their ears almost flat and off to the side when in the presence of loud noise. This action actually closes off an inner flap which protects their sensitive inner ear from loud concussion and pressure changes. Kitraxians do not like loud environments and will tend to seek exit from such locales as soon as possible.

Smell:

Kitraxians have a heightened sense of smell as well as a different reaction to some smells that humans can detect. While the sense of smell is stronger, it doesn't seem broader than what humans can detect. Due to differing perception, Kitraxians can be put off by some smells that only marginally or don't bother humans or most other animals. Durian fruits for example are a strong repellent, as are onions, leeks and certain strong herbs are also displeasing.

Touch:

Kitraxian touch is somewhat less developed than on humans. Their fur keeps most of their body insulated from touch, though the fur does respond to touch via bending force against the follicles. Their hands have a thicker skin than human skin and again dulls touch somewhat. They are however very sensitive to heat and water heated to 40.5 C (105F) or hotter is considered searingly hot. Kitraxian skin will burn easier if exposed to hot water and can scald at over 48C(118F).

Taste:

Kitraxian taste of similar to human taste in sensitivity and range and have taste buds for all five taste types.

Strength and Athletics:

Kitraxians are pound for pound less muscular than humans and can lift far less and cannot develop near as much musculature as a human. Humans on the whole can out lift, out run and out endure Kitraxians in almost any athletic competition. Kitraxians also cannot swim well and have a natural fear of deep water, but do have the advantage of the tail for balance as well as the ability to fly and glide.

Wings:

Kitraxian wingspan is about 10-14 feet depending on their height, generally a wing is a foot longer than the standing height. The wings are bat-like in appearance and covered in a smooth tight skin over the ribbing of bone and muscle. On their home world, the lighter gravity and thicker atmosphere allows for powered flight using their wings. On Earth, powered flight is difficult and only done in short bursts due to the fatigue generated fighting the stronger gravity and thinner air. However Kitraxians can glide long distances if leaping from a height on earth and can even use thermals to extend their time in the air like a hawk. With training, the muscles around the wings will grow stronger, allowing for longer powered flight on earth, but requires regular exercise to maintain. Kitraxians usually keep their wings furled when in public since spreading them often will cause alarm and panic, as many humans and some animals have a built in fear of large winged creatures.

Reproduction

Kitraxian sexual development is very surprisingly similar to mammalian forms on earth, including the formation of breasts and similar male genitals. Kitraxian males have a fuzzy sheath that protects their penis from the elements and damage, extending from this protection only when aroused. Kitraxian male sperm developed an offensive capability due to a sexually transmitted parasite that caused problems in the past for the Kitraxian species. Male sperm will attack and devour foreign cell types that get in their way, including non Kitraxian eggs, making them a possibly dangerous infectious agent to earth life, at least short term. The sperm do have a limited life and will die off and will not divide on their own and thus are not a major threat unless there is direct exposure, which can cause pain and swelling in females who take Kitraxian sperm internally and can even damage the ovaries and the eggs they contain if they get into them.

Females have a vaginal slit though the outward appearance is less detailed than that found on Earth creatures, with much of its variations internal. The young are born live with a thin coat of fur. Kitraxian DNA is completely incompatible with any earth based life form and crossbreeds are not possible through natural means and is only theoretically possible by technological means.

Internal Body layout:

The Kitraxian body is fairly similar to most mammals on earth. The brain is located inside the skull, the heart is in the chest, though more centrally located and the lungs flank it on either side. Below that are the digestive and excretory organs.

Feeding and Digestion:

Kitraxians evolved from creatures that used both scavenging and hunting to survive. Their teeth are built to do great damage with a bite and also made for quickly tearing off chunks of flesh. Their mouths have 8 molars, only two small ones on the top and bottom of each side. They have 30 needle like teeth including two large fangs that protrude from under the upper lip even with the mouth is closed. The lower fangs are shorter but capable of delivering a savage bite wound on any prey or foe. Broken or decayed teeth will fall out and be replaced in 10 weeks by a new tooth with the exception of the molars, which cannot grow back if lost.

Kitraxian saliva contains a powerful anti-coagulant which will cause a bite wound to bleed

profusely without stopping for up to half an hour, usually more than enough time for a bite victim to bleed to death if the bite was deep enough. As a defense against such bites to their own bodies, they can secrete a milky white coagulant and antidote to their own (and many other) anti-coagulant toxins that they can lick onto a wound to stop the bleeding. This ability was of great import both during early evolution and on the battlefields of war later on.

Kitraxians have three stomach chambers and a digestive system that is analogous to that of some birds. The first stomach acts as a crop which can store excess food for later digestion or to bring back home to feed to offspring or mates. While the latter practice is no longer generally observed, it was part of the survival strategy of ancient Kitraxians. Later in their history the crop found new use in smuggling. Long flight consumes a lot of energy and the crop is often filled along with the stomach to power Kitraxians who go for a flight lasting more than five hours. Kitraxians have stayed in the air this way for up to 19 hours before fatigue will force them to land to sleep.

The second stomach chamber acts as a proper digestive stomach and is where food is broken down for absorption later on. The contents are cycled between this and the third chamber which acts as a gizzard, using swallowed stones to grind up bones and other hard to digest materials. At times gizzard stones can slip out of the third chamber before being ground down sufficiently in size and can cause intestinal blockage resulting in a dangerous condition with symptoms similar to appendicitis in humans.

Kitraxians have three organs in the place of the liver in Earth creatures. One produces the biles, and two act as metabolic centers for various molecules in the body. If one of the metabolic centers is lost, the other will grow larger to make up for the lost functionality. The organs also perform a similar function to the pancreas in Earth mammals. Loss of the bile producing organ is fatal without medical treatment.

Heart and Circulatory:

Kitraxians have a four chambered heart very similar to that of earth mammals. The location is more central in the body than on humans and some other animals. The circulatory system of Kitraxians is very similar to that of earth creatures, suggesting a common path of evolution. Kitraxian blood is a reddish orange color due to the presence of cobalt sulfate along with the iron based compounds used for transporting oxygen. The cobalt sulfate is used to keep the PH of the blood slightly acidic as a defense against infection. Kitraxian blood cells are spherical and mostly filled with a substance similar to hemoglobin. One point of interest is that while Kitraxian cells do have an energy storing and converting organelle in their cells, it is rather dissimilar to the mitochondria found in Earth life. Earth mitochondria has its own DNA which is passed down through the mother. Kitraxians do not have this, which suggests this developed as a true organelle instead of through a symbiotic relationship as on Earth.

Respiration:

Kitraxians have two lungs, though slightly smaller due to the presence of their extra digestive organs. Instead of the windpipe opening being next to the esophagus, Kitraxians have two openings in the back of the throat that each connect to separate tubes that combine into one just behind the spine, branching back off again when it reaches the lungs. This allows Kitraxians to have a large esophagus for swallowing large pieces of food. Incidentally, this means that attacks that slash or tear the throat of a Kitraxian will not prevent them from breathing but will make feeding difficult until healed. As a result of their windpipe design, Kitraxians do not have a uvula. The ends of the breathing tubes are very flexible and controllable, allowing Kitraxians to make a variety of sounds, enabling them to mimic the vowels of earth languages despite the design of their muzzles, though with some limits and adding a

breathy sound to their speech and giving them a strong accent.

Kitraxians lungs are more folded than standard human lungs, allowing for them to have greater internal surface area and thus they can breath easily at greater altitudes. The maximum altitude is about 9500 meters. Maximum habitable altitude is 6700 meters. Kitraxians can hold their breath for about three to five minutes.

Excretory System

Kitraxians have four organs where the kidneys would be on a mammal, two on each side. The lower organ has a kidney like function, the upper functions similar to the spleen. Both are capable of acting as a backup if its twin on the other side of the body fails or is lost. The small and large intestines are similar to Earth mammals as is the placement of the anus. The similarities are suggestive that this is the most efficient design to be found in nature.

Other Organs:

Kitraxians have a small organ in the mid-brain that acts as a hormone center of the body. The brain itself grows around this organ and connects to it by a number of nerve connections.

Another peach sized organ in the mid abdomen acts as a “immune control center” producing special cells that release chemical markers at sites of infection and tag intruder cells or virus particles for targeting by immune cells produced in the bone marrow. Loss of this organ will result in an AIDS like illness that is difficult to treat without replacing the organ.

Nervous System:

The Kitraxian brain acts as the center of the nervous system and is where all thought, emotion and perception occur. While the layout and location of various functional areas is quite different, the end result is the same as with life on Earth with the brain being the center of a Kitraxian's being.

The brain connects through the brain stem down to the spine. Like on in Earth creatures, the brain stem controls involuntary “survival” functions, suggesting a similar path of evolution. The brain stem itself is protected by bony plates around it, making it hard to knock out a Kitraxian by a blow to the back of the head. This is thought to have evolved to prevent bites or blows to the back of the head from being easily fatal.

The spine connects to the base of the brain stem and runs down into the body, major nerves branching off. Severing of the spine will result in paralysis as with earth creatures. A severed spine above the third vertebrae down from the base of the neck will result in paralysis of the lungs and death.

Kitraxians do dream when they sleep, suggesting a similar function to dreaming on Earth as part of revitalizing the mind during sleep. Kitraxians are immune to hypnosis even though they can self induce a trance through meditation. There is some conjecture that Kitraxians have been using cybernetic enhancement to their brains for some time, but the Kitraxian government will not confirm or deny this.

Skeletal system:

Kitraxian bones are somewhat denser than the bones of a human. This gives them great strength against breakage and makes Kitraxians hard to injure via bone breakage in unarmed combat. Kitraxians can also take a greater fall, with falls of up to 20 feet resulting in minor fractures at most. Despite the density of the outer shell, the inner bone is filled with many hollows and a lattice like structure that renders them lighter pound for pound to a human bone. The marrow runs through the center structure and is an important part of production of immune cells.

Allergies and health hazards:

Kitraxians do have a few challenges with off world foods. Some foods are simply repulsive to them, while others can cause allergic reactions or are poisonous.

Onions are known to be toxic and will cause severe nausea and vomiting as a defensive response to their consumption. It is not known what the lethal dose is since it will be expelled upon ingestion, but severe cases can cause lingering ill feeling for several hours after exposure.

Caffeine is also mildly poisonous and will cause terrible headaches and ill feeling for several days after significant exposure. Opiates will dull pain, but can cause hallucinations and severe nausea. Valium and similar drugs have been known to cause seizures in Kitraxians and should be administered with care and doctors supervision.

Heat Shock

Another hazard involves “heat shock” which is caused by overheating. Similar to heat stroke in humans and other animals, Kitraxians are particularly sensitive to this condition. The Kitraxian body does not sweat to remove heat like humans and some animals can. Instead heat is removed by panting, and from the extremities. The unfurred parts of the arms and hands act as radiators for excess heat as do the ears and wings. The pads of the feet are filled with a heat conductive fluid that helps conduct heat out from that part of the body. Most Kitraxian footwear has heat conductive sections where the pads go to allow heat to conduct out and into the ground. Excessively warm temperatures, too much time in bright sunlight or immersion in hot water can bring about a condition where the body cannot remove heat fast enough. Symptoms include slurred speech, difficulty walking or standing, confusion, seizures, trembling and rapid panting. Treatment is to remove to a cool area, spread out the wings and fan over with cool air. Ice packs around the feet pads are also helpful. Prevention is key to prevent heat shock and Kitraxians should avoid long exposure to the sun, especially on Earth or other worlds with hotter or brighter suns. Immersion in water greater than 100 degrees should be limited to 15 minutes or less. Normal Kitraxian body temperature is 97.3 degrees Fahrenheit (36.2 Celsius).

Chapter 4: History of Civilization

Early History: 20,000 BCE – 3000 BCE

Kitraxian civilization started when the first groups started to emerge from the equatorial forests and mountains where they had evolved from quadruped plains hunters into bipedal creatures capable of climbing and reaching up to catch lower hanging prey or food. The return to the plains allowed for forming of hunter-gatherer type of communities which roved the land, living on the plains in the summer and moving back to the equatorial rain forests in the winter.

After some time, more permanent settlements were created in coastal or mountainous areas from which hunting parties could move out into the forests or plains and return with spoils of the hunt. After time these communities grew into towns and later cities as writing and mathematics developed to aid in trade and communication with other communities.

Kitraxians are pack oriented and packs act as extended families with 20-30 families forming the smaller packs. This allowed for enough genetic diversity to allow interbreeding within the pack. Early communities were pack based and many warred with other packs for territory and hunting ground or other spoils. Later more peaceful relations were possible after spoken communication developed. Written allowed for creation and posting of laws and regulations on members of the pack as well as visitors. Early towns and cities were often controlled by a ruling pack and one set of laws existed for the ruling pack and a different set for members of other packs living in or visiting the town or city. Sometimes a third set existed for allied packs close to the ruling pack. Packs could fall in and out of favor with the ruling pack as alliances and the balance of power shifted. These ruling packs and their allies were the foundation of the first nation states.

While groups of Kitraxians often warred, taking of slaves was almost always a taboo among them. Kitraxians developed a code of honor early in their history and being used for the gain of another is among one of the worst dishonors one can experience. Over time, slavery became so abhorrent that at times packs that were longtime enemies would temporarily band together to destroy another pack that employed the practice of enslaving war captives.

The development of Kitraxian law is very complicated due to the pack law system in which different sets of laws applied to groups based on pack affiliation. Many ancient legal systems were thrown out either in the middle ages or in the aftermath of the great war. Justice was often done by a council of five judges, though a few packs used a jury like system made up of 7 males and 6 females. Punishment for crime involved public posting of notices of dishonor or public humiliation for minor offenses. After the development of a monetary system, fines were also imposed. More serious crimes such as assault involved imprisonment or payment of a “blood price” in either currency or deeds. Crimes of murder or sexual assault against children were punished by the sword in most cases, with a thrust to the heart or to the spine above the third vertebrae being the most common forms of execution. Hanging is ineffective given the design of the Kitraxian trachea and strength of the neck bones and was not used as a form of capital punishment as much as a form of torture due to the pain caused.

After a time, several powerful packs merged to form partnerships that formed the most powerful nations of Early Kitraxian history. After a period of war, a 100 year agreement between them brought about an era of peace and prosperity as well as the beginnings of scientific advance in areas such as mathematics, geometry and astronomy. This period was brought to a sudden and violent end by a

super-volcanic eruption in roughly 4000 BCE that brought about a thousand year “dark age” at the end of the early period.

Middle Ages: 3000 BCE – 1500 CE

Kitraxian middle ages began as a period of recovery due to the decline of the earlier civilizations due to a massive volcanic eruption which devastated the northeastern continent and brought about a nearly 700 year period of cold weather and poor hunting and a 300 year period of little progress afterwards. The poor weather and hunting of the previous 1000 year period and disruption to the old order of the world had forced great change in Kitraxian society. Many of the great packs of antiquity has been torn apart or been overthrown in the chaos following the eruption and its aftermath. With poor hunting on land, the Kitraxians were forced for the first time to take to the high seas in search of meat. Kitraxians cannot swim well and have an innate fear of water they cannot stand up in. While boats had been used for coastal and some river trade before, few had ventured out far into the sea and only during good weather. Faced with starvation, desperate Kitraxian crews braved the high seas in both sun and storm seeking edible sea life, many perishing in the attempt to feed their respective packs. As ship design improved the number of deaths dropped and Kitraxians finally began to master their fear of the sea and exploration picked up as the deep cold abated at the end of the dark ages.

With the ability to sail to the far corners of Kitraxa, many discoveries were made and many civilizations were enriched or uprooted by colonization and pillaging of the new lands. The least fortunate were island communities which had been founded during the dark ages by shipwrecked crews, or even earlier by those who braved the sea or by island hopping by wing to escape their troubles with the early civilized world. Many of them were preyed upon in various ways and wiped out or absorbed into the packs and nations that invaded them in the name of expansion.

The exploration period did have its good side as well. A great exchange of ideas and customs swept across the face of Kitraxa and scientific progress began to advance again. The first printing press was built in 543 CE, allowing the masses to take up reading and further advances in mathematics and materials pushed civilization into a new era of discovery and architecture. It is around this time that the foundations of the modern eras great packs and nation states were laid. The nations of Keshara and Neraxu were both founded during this time and were the most successful, setting the stage for the both the wonders and terrors of the modern era to come.

Advances in medicine were made with the invention of the microscope in 1208 CE, following the telescope in 1059 CE. While the world has been accepted as round since about 300 BCE, Kitraxa's place in the universe and understanding the nature of life was further refined with the telescope and the microscope. The renaissance era of 1000 CE to 1500 CE led to the developments of mechanization and the beginnings of industrialization. This unfortunately also led to greater killing power in war with the introduction of the long rifle in 1164 CE.

Steam engines and the first railroads were built around 1420 CE. By 1500 CE, the first automobiles were on the roads and factories were springing up across Kitraxa. The modern era was beginning and the middle ages were falling behind the Kitraxian race and a new era of exploration was about to begin.

Pre Great War Modern Era: 1500 CE – 1754 CE

In the years before the great war, Kitraxian society advanced at a pace similar to the speed seen on

Earth after the industrial revolution. There were seventy eight nation states, five of which were major powers and two superpowers. These nations were held together in semi-peace through a tangled web of alliances between packs and secret societies. Meanwhile, the populace enjoyed greater and greater advances despite a few skirmishes and a bloody civil war in Neraxu in 1611 CE. The first plane launched into the air in 1652 CE, bringing faster and safer powered flight to the Kitraxians. The first radio transmission was in 1645 CE and the first television transmission in 1688 CE. The first suborbital test rocket left the Kitraxian atmosphere in 1692 CE, followed by a crewed flight in 1701. The first moon landing occurred in 1736 CE when Keshara landed a crew of five on the surface of the largest of the two small moons, consisting of 4 males and one female. Neraxu had a failed attempt to land on the smaller moon that resulted in death of four crew members a year later. The first atomic test was in 1689 CE with many nations investing in the weapons as a hedge against invasion. It is notable that no nuclear arms were used in combat until the Great War.

The Great War 1753 CE:

Tensions between Neraxu and Keshara increased from 1735CE through 1753 CE following a war between two of their respective allies in 1734 that ended in a bitter stalemate. While peace was held, the two nations were on edge and both began stockpiling more weapons and teaching their allies to build better missiles. Things came to a head in 1753 CE when a terrorist missile strike on a presidential plane murdered the family of the leader of Keshara. The attack had been aimed at the president, but he had been called away from the flight at the last minute due to a minor political crisis with one of his cabinet members, sending his family on ahead and planning to fly back the next day to meet up with them. While it is still debated whether Neraxu or its allies were at fault, or a displaced people within one of the allied nations of Keshara was behind the attack, the result was devastating for all of Kitraxa.

Three days after the attack, Keshara declared war on Neraxu and its allies and people began to evacuate the major cities. After two days of cat and mouse military maneuvers between the two and a lot of last minute attempts at peace deals, a major battle involving the actual armies of both superpowers finally brought both sides fully into war with each other. The first missiles left the silos in Keshara at 18:44 GMT on October 9th, 1753 CE. The Neraxu response came within 5 minutes of the launch and within 4 hours, all major cities in both nations lay in ruins and over 300 million were dead. The war continued for nearly a year, with the first months bringing several more nuclear exchanges that laid waste to the remaining large cities on the planet and killing a total of 800 million Kitraxians. The great war finally ended with the collapse of civilization and a new dark age as both Keshara and Neraxu and their allies disintegrated into a burned out mess of ruined cities, roving armed bands of warlords, and battling packs.

The Second Dark Age: 1754 CE-1792 CE

The years after the collapse of civilization were harsh and terrible. The major cities were in ruins, most of the highways were destroyed and many of the smaller packs used the chaos to settle old scores. Many small private wars between surviving packs were fought over the few uncontaminated resources left behind. The survivors faced a land poisoned by radioactive fallout and roamed by bands of raiders, some left without a pack by the fighting and who survived by taking what they could from those less able to defend themselves. All prisons left untouched by the war had been breached from within or without and many violent prisoners were freed to pillage, rape and torment the survivors who had fled the cities. Most of these prisoners were killed by a group of former lawmen and women who formed bounty hunting squads to track down those who returned to crime after their escape. This group worked alongside a few military units that survived the war to build the first safe haven in 1765 CE and

began the first real work on rebuilding civilization.

By 1771 CE there were several safe enclaves across Kitraxa, most in areas that had seen little fallout or were spared the worst of the fighting. Many of these places were in remote areas where survival was a challenge. Most of these places forced a dissolving of pack loyalty before one could join the community and newcomers were watched closely, many forced to live on the outskirts until they could prove their trust. In 1772, a young woman from the enclave nearest to the border with Keshara would change Kitraxa forever.

The Imperial Era: 1772 CE – Present

In 1792, a young woman, Ezra Keshara, a former member of the Keshara pack became the leader of the largest enclave of survivors from the war. She had arrived in 1768, renouncing her ties with her pack and earning the trust and respect of the people there. Well educated and with an aptitude for politics, she soon rose to a senior position on the council that ruled the largest enclave of survivors. When several of the leaders were killed in an ambush while traveling to another enclave for unification talks, the young woman stepped in to take their place and personally led the posse that ran down the raiders. She changed the stance of the enclave from one of entrenchment against the outside world to involvement in solving disputes and pacifying the wild territory beyond. She completed the peace mission her predecessors had initiated and unified her enclave with the second largest one, made up of mostly survivors from Neraxu.

With the unification, Ezra introduced a new concept into Kitraxian interpersonal relations. While before most had identified with their pack first, and their home nation second, Ezra introduced the concept of a “great pack” that included all Kitraxians. Over the next 19 years, she brought in through diplomacy and the occasional twisted arm or pulled wing, most of the remnants of Neraxu, Keshara and the allied nations. She died in 1811 CE from a plague that was sweeping across Kitraxa, bringing new misery to the world. Her youngest daughter, Zakirah, survived and took up her work and by 1825 CE had unified the entire planet and had reconstruction well underway. With the fading of the radioactive fallout from the cities, the people began to return and rebuild them, with the capital of Keshara being reclaimed in 1807 CE and set up as the capitol of the Kitraxian empire over the next 20 years. Zakirah was raised to the title of Empress in 1827 CE through she insisted until the end that her mother had been the first true Empress. She died in 1854 CE from heart failure, leaving the throne to the next empress, Mahrijah. The reconstruction of the major cities in the empire was completed under her and life returned to pre-war conditions by 1875 CE. She died in 1888, leaving the throne to Azrael, who is still in power today. Azrael was not related to the original line and instead was chosen in a vote to succeed due to a new law disallowing the passing of the throne as a dynasty and making it an elected position that is served until death or dishonor. It should be noted that the English spelling of the latest empress is taken from the Biblical name Azrael, as it is the closest sounding word to the name of the third empress. This has caused some trepidation with certain religious groups on Earth, who see it as a sign from God warning that that Kitraxians are dangerous. Others point out that this is just a coincidence and that the choosing of the spelling is simply what matched the pronunciation most closely.

In the years leading up to reunification, all of the major cities were rebuilt and life began to resemble what it was before the great war. The toll of the war had been nearly 3 billion dead with most of that number dying from disease, famine and exposure in the harsh years afterwards. When the factories once again came on line and medicine was produced on an industrial scale, death due to illness plummeted and medical and scientific advances began again, some having continued despite the

war and its harsh aftermath. In 1802, space launches continued, though the first were mostly satellites to replace those lost during the war and a few crewed launches to survey the extent of the damage to the world. Repair crews were sent up to the still orbiting space station in 1805 and it was brought back on line and used as a transmitter of unification messages to any remote outposts that had not yet been approached. Both moons were colonized in 1838 CE and the first landing on a planet besides Kittraxa occurred on the third planet in 1851 CE, establishing the first interplanetary outpost on the nearly airless desert world.

The discovery of the first planets outside the Kittraxian system had occurred in 1738 CE but the confirmation of life on one of these world was not made until 1866 CE. This was a profound finding that radically changed the outlook of much of Kittraxa. The first interstellar mission was launched in 1872 CE, with a sub-light probe sent to the nearest G type star 6.2 light years away. Advances in propulsion led to the eventual development of the first “warp” type drive in 1917 CE, around the time the first world war was still raging on Earth. The first ships could not reliably travel more than 15 light years and the first missions were simply fact finding and scientific missions. The discovery that Earth was not only inhabited by life, but possibly intelligent life in 1925 CE led to a renewed interest in forming colonies and expanding the reach of the existing ships. The first planet fall on a habitable world was in 1959 CE on a world 24 light years from the Kittraxian home world. The first colony was established upon landing and the Kittraxian race became an interstellar civilization.

While advances in space exploration were being made, major far reaching changes occurred in the government of Kittraxa. Advances in computer technology led to the first truly sentient AI programs in 1883 CE. While distrusted at first, in time the Kittraxian people became more and more reliant on their advice and their ever growing intellectual prowess. In 1899, the first governmental AI was set up, with four more to follow over the next 5 years. The AI's were capable of talking with all of the citizens of Kittraxa in real time and the average person could air their grievances directly to the government in a meaningful way for the first time in history. In 1912 CE, just days after the sinking of the Titanic on Earth, the Kittraxian government became fully run by AI, leaving only a president and a council as public face of power and the Empress as a revered figurehead. With the efficiency of AI run government, nearly limitless power based on Solar, Wind and Fusion and the vast resources of their entire solar system, the Kittraxian people evolved from a profit and labor driven society to one where people were free to pursue any dream without fear of going homeless or penniless. With society set free to pursue their dreams, advances in science and medicine came even more quickly. The ability to replace all type of aging or damaged organs came in 1896 CE and the ability to repair the brain with cybernetics came just 4 years later. The ability to reverse and hold back aging indefinitely arrived in 1921 CE and is the reason that the third empress is still alive and maintained in a youthful state. With death possible only by choice, accident, or murder, the Kittraxian population boomed towards unsustainable levels, pushing the need for colonization of other world. Interim solutions involved creating more and more habitable space on the planets and moons within the Kittraxa system. With the establishment of the first colony on a habitable world in 1959 CE, the problem of overpopulation on the Kittraxian home world came to an end as the empire could now expand beyond the Kittraxian solar system.

In 1977 CE as Star Wars hit the theaters on Earth, the second habitable colony world was established 38.6 light years away from Kittraxa. In this same year, Kittraxian warp technology developed a theoretical range of 250 light years, a leap from the previous 180. This brought Earth within range of Kittraxian ships, just a nine week journey away and the first probes were dispatched in 1982 CE, entering orbit in September of that year. The probes returned with more than twenty million photos, thousands of hours of transmission data captures and even pieces of broken earth satellites in

May of 1984 CE. With the first hard evidence of intelligent life on Earth, the Kitraxian people began a great debate on whether to contact the people of Earth.

After review of the captured television and radio transmissions, it was determined that Earth was in a precarious position similar to Kitraxa just before the great war. With the United States and the Soviet Union at each other's throat and many other nations pawns in a game of international chess, the prospect of a Great War on Earth looked almost inevitable. Probes were sent to keep constant watch on Earth for signs of trouble or peace and the Kitraxians were surprised to see peace emerge in 1991 CE with the breakup of the Soviet Union. With the world changing due to the advent of publicly available Internet access in 1993 and the world staying largely peaceful with only a few small exceptions, the Kitraxians decided to make first contact in 2000 CE, a year they knew would be significant to the people of Earth.

Contact with Earth: July 1st-23rd, 2000 CE

The Kitraxians sent a fleet of 19 ships, including the flagship with the Empress on board in May of 2000 CE. The ships arrived in June with a travel time of only about three weeks due to further improvement of warp ability. The month of July was chosen for contact due to the fact that the sun would be opposite Kitraxa in the skies of Earth, allowing for clear communications home if needed. The first contact signals were sent to the NASA deep space network antennas on Earth on July 1st. The first signal was picked up in Canberra, Australia and thought to be a hoax. NORAD began tracking the first of the fleet of ships at 17:12 GMT and the US president was informed. As other ships began to show up on NORAD radar, the president made a decision to inform the Russian president, the Premier of China, the UK Prime Minister, the French President and the Secretary General of the U.N. The military was ordered to go to DEFCON 3 at 18:00 GMT but not told the real reason why.

One of the smaller Kitraxian ships was carefully maneuvered into low Earth orbit and further transmissions sent as well as a close pass made to the newly built and crewed international space station. More broadcasts were made using shortwave and HAM radio frequencies, directed first at China and Japan and then at the United States and Canada. At this point news of the extraterrestrial contact broke out of control of the government and took the world by storm. While the initial reaction involved its share of panic, the general public was more calm about it than many expected. When plasma bolts and howling Kitraxian shock troops did not rain from the sky over the next two weeks, things slowly began to calm down and a sense of excitement about meeting another species took over from worry and panic. For the first time in history, the people of Earth were truly united to either welcome or, if necessary, fight the newcomers.

Actual diplomatic first contact is considered to have officially taken place when the first face to face meeting occurred on July 23rd 2000. After much negotiation about meeting time and place and discussions of how to deal with infectious concerns, the meeting was set to take place in the airlock of a Kitraxian shuttle by one of the members of the international space station. The crew on board drew straws on who would make the first physical contact, a fact that greatly amused the Kitraxian delegation waiting patiently on the other side. The winner was granted the temporary post of special UN ambassador for the duration of the meeting. Russian cosmonaut Vasily Demidov drew the short straw and met with Kitraxian ambassador Kavra Praxterus after making a short untethered spacewalk to a nearby Kitraxian shuttle. Vasily offered his hand to the Kitraxian ambassador, who took it while bowing his head with his left arm across his chest in the traditional Kitraxian show of respect and friendship. The initial handshake and bow was met with cheering and fireworks across both Earth and Kitraxa. The initial vocal greeting from Earth's ambassador was delivered in Russian and translated to, "We welcome you with peaceful greetings to the planet Earth". The Kitraxian ambassador replied in

his own language, “It is a great honor to accept your gracious welcome on behalf of the Empress”. The meeting between the two ambassadors continued for another twelve days, with translation provided by a Kitraxian AI who despite having been programmed with an understanding of most of Earth's major languages still needed occasional correction on its Russian from the Earth Ambassador. The United Nations was in direct contact with the ambassador who acted more as an intermediary for negotiators on Earth. At the end of the meeting the cosmonaut left the shuttle after decontamination and had to stay in his space suit and proceed immediately to the Soyuz escape capsule for departure back to Earth.

Despite Kitraxian assurances they had taken great decontamination pains and would aid in treating any resulting illness, the cosmonaut was kept in quarantine for 365 days after returning to Earth alone in a Soyuz capsule and was released without suffering any ill effect from his exposure to Kitraxian life forms both macro and microscopic. The Kitraxian empire re-reimbursed both NASA and the Russian government for the costs of sending a replacement Soyuz capsule to the station as a gesture of goodwill. The Kitraxian Empress sent a personalized gold plaque and a message of sincere thanks to the ambassador for sacrificing a year of his life in the name of peace with her people. More of the outcome of the Kitraxian-Earth contact will be discussed in Chapter 6 of this book.

Chapter 5: Culture and Customs

Kitraxian culture is naturally rather different than most cultures on Earth. There are places of overlap and places of divergence and while it is hard to cover them all, the major tenants will be covered here.

Kitraxian Flag:

The Kitraxian flag is white with a flying ancestor of the Kitraxian race on the front. This represents the animal that the entire Kitraxian race evolved from and is a symbol of the common origin of all Kitraxians regardless of pack or nationality. The jeweled necklace is an adapted form of the crown of the Empress, which is more of a circlet than the kind of crown used on Earth. This symbol is emblazoned on all Kitraxian ships, military vehicles and even license plates. Kitraxian military uniforms have the flag on the right arm just below the shoulder puff and it is often worn as a pin on the left lapel of traditional Kitraxian dress robes.



Kitraxian Packs:

A Kitraxian pack is much like that of a family only blood relation is not required. Packs initially hunted and lived together, but later became a form of alliance between family groups. The complex set of alliances that created pacts and between packs, or sometimes even subgroups within packs led to the Great Kitraxian War in 1753 CE that nearly destroyed their civilization. Pack allegiance has been deemphasized in place of an idea of a “Great Pack” that includes all the Kitraxian people, united under the power, beauty and wisdom of the Empress. The very foundation of the Kitraxian empire today stands on the idea that Kitraxians can reach out to each other in aid and friendship despite whatever pack ties their family may have. Pack membership is now more of a matter of historical pride rather than something more important in forming of relations with other Kitraxians. Many Kitraxian last names derive from the pack name rather than a family name, which is often used as a middle name.

Kitraxian Honor:

Kitraxians have long held honor as very important in their culture. This is something that has transcended most pack politics and law throughout Kitraxian history. Honor enshrines the idea of being fair in both combat and in trade. Honesty is important, though white lies to protect feelings or the honor of another are commonplace and accepted practice. Dishonorable acts include selling out a friend or pack member, treason, attacking from behind or extensive dishonesty for personal gain. Kitraxians have a long memory when it comes to slights and can sometimes be taken aback by things that would be considered a small deal on Earth. Rudeness is considered a disdain for their honor and being interrupted while speaking will often insult a Kitraxian. Kitraxian culture stipulates patient listening until the other party is finished speaking, with interruption only done when absolutely necessary. Western culture on Earth is more lax about this and this sometimes causes unintended slight towards Kitraxian visitors if they are interrupted by someone while speaking.

Making a promise or a claim that is not kept is a big deal for Kitraxians and is considered a sign of dishonorable behavior, even if the promise was small. Once someone has gotten themselves marked a potentially dishonorable in nature, it is hard to regain that trust. Some leeway is given to the people of Earth, but this is ingrained enough that people who make the mistake of breaking even a small promise will find themselves shunned for a time.

Some early Kitraxian cultures employed the death penalty for extremely dishonorable behavior. Other cultures on Kitraxa had a form of ritual suicide similar to seppuku in Samurai culture. Instead of disembowelment, this involved the insertion of a specially made short dagger into the heart. This practice has long been discontinued but every Kitraxian military officer keeps a ritual suicide dagger for use in case of imminent capture by an enemy while they are in possession of knowledge that may harm their war effort.

Law:

Kitraxian law is as complicated at times as human law, but considered in some cases even more fair than a trial in the US due to completely impartial AI judges. Defendants can still choose a traditional jury of 13, with an AI acting as judge if they wish. Kitraxians on Earth are subject to local laws as well as the Kitraxa-Geneva-New York Accords. Most Kitraxians are law abiding with a lower rate of sociopathic behavior than the human average. Some of this may be due to more advanced medical care and ability to detect and correct many mental illnesses before they become a problem. Kitraxians will generally follow lawful commands and will often defer to authority, especially in cases where they are unsure of the local laws or customs. Few problems have been reported with Kitraxians on earth and most of those were misunderstandings due to language or culture. Most problems involving the law have involved self defense against an attacker with a racial or religious based bias against any Kitraxian presence on Earth.

Gender Equality:

Kitraxians have a history of gender equality, with both males and females taking their turns in the hunt with the exception of pregnant or nursing females. When young are old enough to be weaned, the mother returned to her normal activities within the pack with the father taking his turn caring for the children. While females do have somewhat less strength and musculature than men, the differences are far less pronounced than for example, the average human male and female. Most females are as capable of men in feats of both endurance and strength. Kitraxians have long relied more on cunning and co-operation in pack hunting than on brute strength, which may explain this difference with many cultures on Earth.

Facial Expressions:

Kitraxian facial design is very different from basic human facial design. As a result Kitrxian facial expressions and emotional expressions are often very different. Some have pointed to similarities with canine expression as a guide to interpreting Kitraxian facial gestures.

Smiling is accomplished in Kitraxians by slightly opening the muzzle and letting the tip of the tongue peek out across the lower lip. This is differed from panting due to exertion, where the tongue protrudes much more.

Frowning involves a downward drooping cast to the ears and a downward cant to the head.

Wincing involves bearing of teeth without opening the muzzle while splaying the ears to the side, usually due to a loud or irritating sound.

Sadness involves a look similar to frowning. Kitraxians also have tear ducts and can and do cry when in grief in a very curious parallel with human behavior and is an area of intense study by

scientists on both sides, neither whom have explained why sadness causes tears in either species. Extreme grief is also expressed using a low honking cry that has been described as the sounds of a “dying dolphin”.

Anger can be expressed by baring of forefangs and the shifting back of the ears while keeping them upright. A warning hiss made by sucking air between the forefangs is also made when expressing a harsher anger.

Extreme anger can bring about the most spectacular and frightening Kitraxian display of emotion. When the baring of fangs and a warning hiss is not enough, the ultimate expression of rage involves a quick but complex set of motion and sound. The muzzle is opened fully and all the teeth bared, the tongue poking out stiffly over the lower lip. The wings are snapped out and curled partially inward as if to encircle the target of the anger. The arms are similarly outstretched, fingers splayed out as if to scratch with the talons. The tail lashes and quivers and the shoulder-puffs will bristle out as will the tail tip. The final part of this display is an ear shattering roar that can reach 125 decibels and is capable of damaging human hearing.

Another display of aggressive anger is to snap out the wings, arching them so that the spines point towards the target and leaning the head forwards and hunching the back before rushing at the target while making a hissing sound through the teeth like an angry goose. This is usually done after a target retreats from an earlier roar to ensure they think twice about turning back around. This is most often used in a fight over a mate in place of a roar of challenge, but is also used to drive off potential threats from non Kitraxian creatures.

Kitraxian Roar:

The roar of a Kitraxian has been likened to somewhere between that of an a lion and a bear with a little tiger thrown in for good measure. While Kitraxians can snap their ears to the side to close them off and prevent damage from hearing, humans and some other animals are not so fortunate and could suffer permanent hearing damage at close range to a Kitraxian roar. Smaller animals can be stunned by the blast of sound and there are cases of dogs having heart attacks due to extreme fear after being subjected to the roar. The roar also includes some infrasonic harmonics that have been known to induce fear in people. Kitraxians are admonished to only roar on Earth in an isolated area, or in a life or death situation. In Kitraxian culture it is also customary to roar to the sky for the loss of a family member, friend or beloved pet shortly after learning of their death.

Insulting Gestures and phrases:

Kitraxians have no dedicated curse words, instead using more complex oaths which describe someone as stupid for example. The closest phrase Kitraxians have to “damn” is the phrase “Chirrah-nix” which simply translates to “not good”. In Kitraxian, something can be negated with the phrase “nix” at the end. “Chirrah” means “good” while “Chirrah-nix” means bad or not good. English curse words used by humans and other Earth creatures is a source of confusion to Kitraxians until they have been immersed in Earth culture enough to understand the Earth form of cursing.

Kitraxians have only one obscene hand gesture, which is more of a threat than an obscenity. This involves making a “gun” with the hand using the two fingers as the barrel and bayonet and the thumb as the “trigger”. This is generally a threat of harm and is only used between blood enemies. This gesture developed in the days of Kitraxian black power pistols having an attachable bayonet for close quarters slashing after the single shot was spent.

Kitraxians do have a more light hearted gesture used to taunt or mock the target that involves taking their brightly colored tail tip fluff in their right hand and shaking it at the target of ridicule. This is considered an insult similar in severity to Kitraxians as throwing a shoe at someone in Islamic culture.

Accent and Speech:

Kitraxian throat design results in a rather lower voice than human average, with males having a rumbling basso to their voice. This is despite Kitraxian hearing ranging up to 75 KHZ. Kitraxian echolocation is actually produced in the nose and interplay between the tongue and upper palette and is not used as part of speech, but only for navigation in extreme darkness or in the foggy conditions found on the moors and plains where the Kitraxian species originated. Females have a somewhat higher voice due to smaller voice box and muzzle.

Kitraxians have a fairly distinct accent which has been described as somewhere between the fictional Centauri of Babylon 5 and the Khajhit of the Elder Scrolls series of video games. Kitraxians will sometimes stumble with pronunciation of human languages. English has been said to give Kitraxian great trouble due to its seemingly contradictory grammar and pronunciation rules. The Kitraxians have had a unified language since roughly 1875 CE and like with the French, they have a governmental agency dedicated to maintaining the official Kitraxian dictionary. While slang develops, it is discouraged and is generally not recorded in official dictionaries except in very unusual cases. Kitraxian letters each have a pronunciation that does not change due to adjoining letters like in English, making it a somewhat simpler language to master than English.

Kitraxian's cannot roll their r's and struggle with pronunciation where this is desired in languages such as Spanish. Kitraxians will often put a breathy sound on their speech due to how they have to force air through their long muzzle to produce speech as well as the unusual design of their respiratory system.

Clothing:

Kitraxian clothing has to take into account tails, wings and shoulder puffs as well as claws on the hands. Most clothing is woven from a strong plant based material similar to cotton. Kitraxian clothing is generally thin due to their fur coating, except for gear made for extreme cold environments such as space or polar regions. Kitraxians are extremely proud of their brightly colored shoulder fluff and for both cultural and comfort reasons, all Kitraxian shirts and robes and coats leave the holes for the shoulder puffs to push through. Traditional Kitraxian clothing consists of a pair of shorts and a thin undershirt with the back open for the wings, covered by a robe like covering of thin yet strong material that is divided in the back for the tail and has holes for admitting the wings. Fancier occasions call for a long scarf like ribbon laid across the back of the neck with each end hanging down to knee or thigh level. Many of these are decorated with Kitraxian animals or plants or Kitraxian writing with insightful quotes or words of wisdom or reflection.

Poetry:

Kitraxians never really developed poetry as an art form separate from music and are often baffled by poetry, which so far is a form of art that is unique to Earth. One famous Kitraxian was quoted, "I read haiku for two hours and all I got was a headache".

Music:

Kitraxians have a variety of musical instruments from drums to wind instruments to instruments similar to the piano in design. Most modern Kitraxian music is heavy with synthesized sound and similar to electronica popular among the rave crowds today. Kitraxian singing voices do not have the range and ability of a human voice or that of some birdlike species. Kitraxians generally consider Earth music to be far better than their own and after first contact, Earth music has become massively popular on Kitraxa. Kitraxians favor mostly music from 1990 and earlier with a few exceptions. Most do not like the heavily “autotuned” music that is popular in the 21st century. Lack of a copyright treaty and extremely lax copyright culture on Kitraxa has led to much complaint from rights holders on Earth. The Kitraxian's response to the complaints so far have amounted to “We make our art and music and movies freely available, and we expect the same in exchange as laid out in the Kitraxa-Geneva-New York accords (agreement between the U.N. and the Kitraxian Empire). One media exec said this was not a fair trade and described Kitraxian music as “Caramelldansen on crack”.

Movies:

Kitraxian and Earth forms of video entertainment are fairly similar, though many Kitraxian animated cartoons are considered more in line with Japanese anime, complete with translation gaffes and a debate over whether to watch them “dubbed or subbed”. Currently Earth movies have caught on better on Kitraxa than vice versa. However some of the Kitraxian classics have become popular on Earth, particularly those involving the great war era which have struck a chord with fans of apocalyptic or dystopian themed movies. The most popular Kitraxian movie on Earth is a subtitled version of, “Legend of the Lawbringers”, a movie about a group of Kitraxian law-bringers who hunted down the 10 extremely dangerous criminals in the irradiated ruins of Keshara in the chaotic aftermath of the great war. Since Kitraxians have access to the Internet though a satellite relay when in orbit, pirated movies often make it to Kitraxa within about a month of their appearance on the Internet on Earth. Depending on when a ship arrives or leaves, it can take up to four months. Due to the accords, the Kitraxians get unfiltered Internet access when visiting Earth, something that media execs have complained should not have happened. Requests to the Kitraxians to block access to piracy sites have been rebuffed every time as unacceptable censorship.

Kitraxian food:

Carnivorous by nature, most Kitraxian cuisine involves meat. Many vegetables are unpalatable or even indigestible by Kitraxians. However there are some forms of Kitraxian vegetation that are eaten or used as spices or side dishes to improve nutrition. Fruit is well tolerated and enjoyed with many meals though not all fruits are palatable to the Kitraxian sense of taste. Some such as Durian fruits actually act as an effective repellent due to their odor. Unfortunately, due to contamination concerns, Kitraxian food cannot be imported to Earth at this time and only a few people from earth have ever sampled it.

Earth Food:

Kitraxians can consume all earth meats without trouble. Many vegetables either do not taste good to them, are indigestible or even toxic. Onions are the most toxic vegetable to Kitraxians. Ingestion of fresh onions will trigger vomiting, in some cases forcing all three stomachs to empty their contents. The smell of onions is an effective repellent. Lettuce is indigestible since the Kitraxian gut rejects the

microbes that aid with its digestion as are some other leafy plants and can cause illness due to blockage, though usually the gizzard will grind it up enough to pass, but it will cause bloating and pain until that time.

Some vegetables are surprising favorites which include garlic, asparagus and lightly cooked Brussels sprouts.

Feeding habits:

Some aspects of Kitraxian dining etiquette can be annoying or even offensive on Earth. Drinking is done with straws on Earth instead of slurping or lapping from a bowl. Straws are used on Kitraxa but in fancier restaurants that keep to old traditions, beverages are served in bowls and lapped up noisily. Kitraxians can pour from bottles or cans but have to tilt their head up and pour in while opening just the tip of the muzzle. Sometimes this still results in accidents.

Feeding can involve ripping hunks of meat with the forefangs and then tossing it back in a curiously birdlike motion, sometimes with jerking and snapping motions while gulping and sometimes even shaking the head and upper body to help send larger chunks down. On Earth this can seem savage and even threatening as people can feel uncomfortable watching Kitraxians rip large sections of meat with their sharp teeth or crunching through bone. Kitraxian visitors are urged to make use of forks and knives to cut their food into smaller pieces that do not require more traditional feeding methods to swallow.

Another custom they are asked to avoid is picking up their plate and licking it clean as a compliment to the chef for a good meal. Kitraxians also have to adapt to Earth's "3 meals" regime. On Kitraxa most eat twice a day due to shorter days, and they eat slightly larger meals, slowing releasing food from their crops throughout the day to maintain their strength and blood sugar at a nice constant value.

Chapter 6: Kitraxians and Earthlings

The relationship between Kitraxians and the people of Earth has been as complex as anyone guessed a first contact situation would be. This section breaks out some of the more interesting or important aspects of the relationship between Kitraxians and the people of Earth.

One of the first orders of business after initial contact was to negotiate the setting for an agreement between the United Nations (representing all member nations on Earth) and the Kitraxian Empire. The meeting was done via teleconference since Kitraxians were not medically cleared to visit Earth until January 2003. It took seven months to hammer out a full agreement and it ranged from everything from visitation rights on each planet, transfer of technology and sharing of culture. The accords were worked out with groups located in both Geneva and New York with representatives from the eastern and western hemisphere respectively in each location. The Kitraxian delegation was on board their ship in geosynchronous orbit over the mid Atlantic with a microwave band connection to both groups. The Empress herself remained throughout the negotiations and electronically signed the final agreement. She later returned in 2003 to physically sign the agreement after a few amendments were made and Kitraxians were cleared to physically land on Earth. This final agreement was signed in Washington D.C. on February 3rd, 2003.

Earth Controlled Space:

Among the more important decisions was to establish limits of Kitraxian space in the direction of Earth. In the end, a 100 light year buffer from Earth out to the general direction of Kitraxa was marked as Earth controlled space and includes jurisdiction to any planet not already inhabited by another intelligent race. While this gives Earth a 7 light year advantage on the space between Earth and Kitraxa, it was considered fair given the vastness of space and the Kitraxian empires head start on colonization of other worlds. The Kitraxians do not plan on colonizing another world in the next 50 years and only have two other worlds colonized outside their home world. Neither are anywhere near the border with Earth. The Kitraxians also agreed to leave a section 250 light years deep untouched in a 30 degree angle cone above the north and south pole of Sol. The Kitraxians have no plans to go around and colonize on the other side of Earth space and are focusing more in the direction of the constellations Scutum and Scorpius for expansion of their empire.

Hopes for Unity on Earth:

Upon arrival, the Kitraxians brought the people of Earth together simply by appearing in the skies over Earth. The Kitraxians expressed hope that the changing political climate on Earth and their moment of unity would be the starting point for the unification of the people of Earth in time. These hopes were shattered on September 11th, 2001 when terrorists flew aircraft into buildings in the United States. The resulting war has greatly dimmed Kitraxian hopes that the people of Earth would find unity without going through the type of situation that brought them theirs. Some on Kitraxa have pointed out that contact was made too early, before the people here had conquered enough of their problems and shaken off the shackles of unbending religious dogma. The Kitraxians have kept their distance from the wars on Earth, generally not bringing them up and when asked about them answer that it is an "Affair of the people of Earth to resolve". However in 2004, the Kitraxian ambassador to the UN gave a speech about the Kitraxian Great War and showed sometimes shocking photographs taken during and after the war. This was done as a not so subtle message to the people of Earth that the inability to settle differences and sticking to dogma can and will result in great tragedy. So far the "War on Terror"

continues to rage on and violent revolution continues to be the primary force for change in many parts of the Earth.

Transfer of Technology:

While initially governments on Earth clamored for access to Kitraxian advancements, Kitraxians have been adamant that they will not provide any technology either mechanical, electronic, software, mathematic or medical that is above what Earth can do itself. One Kitraxian ambassador likened the telling of the secrets of the universe to the spoiling of a good movie before you have watched it, or learning what lies ahead on a voyage into the unknown when you wanted to make the discovery for yourself. In short, Kitraxians who visit are not allowed to bring any advanced technology or knowledge of the universe to Earth that would alter Earth's natural rate of advancement. Most Kitraxians bring nothing but clothing from their world and instead rely on using only Earth technology while visiting.

Some have greatly criticized the inclusion of medical technology being withheld, arguing that the Kitraxians could help end cancer on earth today, or cure AIDS or any number of illnesses both genetic or infectious. While Kitraxians cannot give formulas for medicines directly to Earth to solve its medical problems, some Kitraxian visitors have opted to give blood instead. While Kitraxian blood cannot be transfused into any creature on earth without killing or injuring them, the donated blood is used for research instead. Kitraxian blood is full of novel compounds and proteins never seen before on Earth and Kitraxians have also given samples of their coagulant and anti-coagulant saliva variants. Since scientists on Earth have to work to isolate useful compounds from Kitraxian blood and saliva and test them and then finalize them into usable drugs, this is not considered a violation of the accords. Kitraxian anti-coagulant has since been developed into a life saving drug for stroke and heart attack victims and has begun initial human/furry trial as of the writing of this book.

Cultural Exchange:

Both sides agreed to a royalty free exchange of music as well as movies and television broadcasts more than 35 years old and artwork of any age. The music and book industry has been left quite upset by the fact that movie and television broadcasters got a 35 year limit while they have no limit. Artists are generally not as worried since the real money is generally made on the originals which cannot really be copied. Kitraxians have agreed not to buy and remove any original artwork or antiquity from Earth without express U.N. Approval. Kitraxians however are free to bring such objects to Earth with the exception of firearms.

Copyright:

Kitraxians only allow a very limited personal copyright and even that only protects from unauthorized derivative work, not against sharing. Corporate copyright is infinitely extensible but only through payment of a tax on a percentage of the amount of money it is calculated to generate and also only protects against derivative work and obvious look-a-likes. Media is shared freely on Kitraxa with new works sponsored by patronage via Kickstarter like sites or directly paying the artists to promote the production of more work. The Kitraxians say this is a cleaner system that rewards good content. It is noted that performers, actors, artists, writers and producers are expected to manage their own retirement concerns just like any other laborer unlike on Earth where there is an expectation to keep getting paid for life for single work. Earth based media producers claim this system only works at the level of technological advancement that the Kitraxians have and have launched an all out campaign

resisting any changes to the system on Earth. Only time will tell if the Kitraxian copyright system will be adopted on Earth, but many hope it will.

Combat:

There have only been a few real altercations between Kitraxians and humans. While some have done mock battles to show fighting techniques or to study human martial arts, real combat has been rare and generally due to racist or religious reasons or crime such as robbery.

When it comes to unarmed combat with a Kitraxian there is one rule and only one rule to remember: There is no such thing as unarmed combat with a Kitraxian. Kitraxian claws can tear through the average humans skin easily and their bite is even more fearsome. Kitraxian anti-coagulant saliva will make any bite wound bleed and Kitraxian bites can be devastating even without that. The fangs can tear through flesh and even bone. A Kitraxian is capable of biting a pool cue in half and a bite can easily crush bone. Any teeth forward of the molars that are lost will regrow. The wings of a Kitraxian have claws along the bottom of the bone tips that can rake at an attacker and cause nasty lacerations.

In armed combat, Kitraxians can be capable with swords, knives and guns with the proper training. Kitraxian military ability is impressive and they are capable of launching interstellar war operations if necessary, but seek to avoid this due to the extreme cost.

Religion:

Kitraxians have had only polytheistic religions in their history, the largest of which had 36 gods and goddesses and which was the dominant religion in number of believers until 1680 CE. With the advance of technology and science as well as religious driven strife, a backlash against organized religion began in the 1600's CE. The number of non believers or believers in personal non organized faiths grew until it eventually outweighed the number of believers in other religions. The decline continued slowly until the great war, which left such devastation that while a few groups formed cults, many simply abandoned any faith in intelligent deities. Only a few choose to believe in deities today, with most of the population not believing in any supreme beings. Interestingly, many do still believe in some form of afterlife noting that the laws of the universe don't preclude an afterlife existing without a god or gods. Kitraxians have reported near death experiences that mirror some aspects of those experienced by those on Earth.

Upon their arrival on Earth and after the initial weeks of negotiation with the UN and world governments, a website was set up to take questions from the public. People were urged to use whatever language they felt most fluent in as translation would be handled by an AI. With the help of the AI on board the flagship, over 27 million questions were answered within 5 weeks. The Empress herself even took some time to read an answer a few of the questions. One of the most popular questions asked if Jesus had been on Kitraxa. One of the Kitraxians helping to craft responses famously asked, "Jesus who?". Finding that Kitraxian religion had more in common with the religions of antiquity on Earth led to a lot of soul searching for some.

Some believed that Kitraxians would get "signs from God" at the right time, and their time had not yet come. Others saw it as their duty to preach to the Kitraxians, especially certain Christian sects with a history of running modern day conversion missions. Others saw the Kitraxians fulfilling some of the signs of revelation. Atheists cheered the Kitraxian rejection of organized religion and "faith" based

beliefs and see the same rejection as inevitable on Earth.

The name of the Kitraxian empress has caused quite a bit of religious fear among some Christians. The way the name of the empress closely matched that of the biblical Angel of Death was seen by many as a bad sign and some even claim her as the anti-christ. Islamic people seem to have more stigma about Kitraxians than Christianity as a whole, with some groups claiming them as satanic monstrosities sent to thwart the will of Allah. Kitraxians are banned from setting foot in Iran and Saudi Arabia and a cleric in Iran even issued a fatwa against them. Another in Pakistan offered \$1000 for the every head of a Kitraxian brought to him and a billion dollars for the head of their empress. Some African and Indian Islamic groups have been more open to Kitraxians while some African Animists have even celebrated their arrival.

Some cultures have seen Kitraxians themselves as something special. There are reports of worship of them in parts of China, Japan, Africa and India. While most of these cults are simply laughed off, in China, the government has taken to forcibly disbanding entire villages over the worship of Kitraxians. The Kitraxian government has issued a statement against such worship, but it usually will not sway those determined to do so.

In some parts of Japan and China, Kitraxians are treated with a special respect that borders on worship. Some who follow older religions claim they are just another part of the vast spirit world that is paying Earth a visit and aren't the first off worlders or the last.

There are a few reports of Kitraxian worshipers in the US and Europe, but most are generally laughed off and one group was even famously pranked by a group known as "Anonymous" into thinking the Empress herself was going to visit them.

Over all Kitraxians have a general disdain for organized religion and many have argued they should not have contacted Earth until they had lost most of their organized sects.

UFO Enthusiasts:

While the arrival of the Kitraxians was considered a huge triumph for UFO believers, more questions than answers have arisen from the revealing of other intelligent life in the universe. When the first Kitraxians were cleared to visit Earth, massive crowds came to greet them. Some took it as a time to enjoy dressing as green men or as various characters from science fiction. Others protested and some even called for the Kitraxians to leave and consider them invaders. A number of conspiracy theories popped up in the darker corners of the Internet that the Kitraxians are just biding their time until they can strike. Some groups such as the KKK and the WBC have come out against the Kitraxians and claim they have come to do great evil.

Many UFO enthusiasts have asked the Kitraxians if they have had anything to do with Roswell and other incidents. The Kitraxian's have denied this, noting they did not have the technology to reach Earth until 1977 and it was not until 1982 that they had absolute proof of Earth's inhabitation by intelligent life. All previous studies using telescopes had simply inferred it via the presence of industrial chemicals detected in the spectrum of Earth's atmosphere. No earth radio or television signals have reached Kitraxa or any of its colonies yet due to the long distance from Earth. The probe sent to Earth came out of warp near the orbital path of Mars and coasted to Earth, taking photos along the way. Radio and TV signals as well as other transmissions were picked up almost immediately after the main antenna had pointed to earth. The first photo to show city structures was only possible from

orbit, with a photo of Nairobi, Kenya being the first city photographed by the probe after entering a high orbit that started over southern Africa. The probe kept itself hidden by its dark color and a radar absorbent coating and design that prevented reflections.

Kitraxians have admitted to seeing many strange things in space. Most of the area between Kittraxa and Earth remains unexplored. Kittraxians are not allowed to enter Earth controlled space unless traveling to Earth or with the permission of the UN council on extraterrestrial relations that was established to manage compliance with the accords. The Kittraxian people are not allowed to give any data on objects in space to the people of Earth that they have not yet been either discovered by humans, or cleared by the Kittraxian government. It is being left to the people of Earth to discover any habitable worlds nearby and to develop the means to colonize them. Kittraxians have not extensively explored beyond 40 light years away from their home world, with the voyage to Earth being the longest trip they have taken. Even the area within that 40 light year area around Kittraxa still has many stars that have not been visited or extensively studied or cataloged. The area in question contains over 1600 stars with only 5% having been visited by a probe. Kittraxians will not say much about interstellar travel other than it is still expensive.

While exploring, some ships have claimed to have seen objects on radar or visibly that seemed to move intelligently. One Kittraxian officer on a ship admitted to seeing objects leaving Earth that did not match the technology profile of anything made on Earth. Another ship on approach from the arrival point out near the orbit of Mars radioed another Kittraxian ship in orbit of Earth asking if they had any small craft in the area as they had spotted what appeared to be five ships traveling in formation. When they were told no, they proceeded to change course towards the objects, which were reported to have fled their approach and vanished from their screens. The transmissions were captured by several listening posts on Earth set up to monitor Kittraxian ships, which by the accords are required to transmit in the clear while in Earth space. The Kittraxians still deny ever meeting another intelligent species and both the habitable worlds they colonized had only simple forms of life.

Politics:

The accords forbid any political or technological influence on Earth that can be avoided. Kittraxians do not interfere with developments on Earth or take sides in any conflicts. The Kittraxian ambassador to the UN is mainly there to deal with any affairs that directly effect the relationship between Earth and the Kittraxian people.

The Kittraxians do reserve the right to define their relationship with individual nations on Earth. While they enjoy full diplomatic relations with the US and all European nations, they have limited diplomatic contact with some nations for specific reasons. China for example has long sought full relations but the Kittraxians have said they will only have limited contact until there is “change”. To avoid violating the accords, they don't describe what that change is, but for some it is clear that censorship is a sore point as the Kittraxian people see it as a dishonorable way of governance. The Kittraxians refuse any relations with North Korea, Iran and Saudi Arabia due to “philosophical differences”. Their beef with Iran and Saudi Arabia is clearly based on religious based hatred from the governments of these nations. North Korea is said to be shunned because the Kittraxians consider the people to be enslaved by the elite in the government there.

Both Taiwan and South Korea have approached the Kittraxians asking for an aid agreement if they come under attack but the Kittraxians have pointed out this would violate the accords which also forbid any military action that was not provoked and a one month cooling off period for any act of war. The

closest this came to a test is when members of a US based UFO cult with a large celebrity following attempted to assassinate the Kitraxian ambassador to the US in Washington DC. The ambassador was stabbed and wounded but survived after fighting off the attackers. One of the attackers lost an arm after a bite wound became infected and another nearly died from blood loss after being bitten on the neck. The Kitraxians demanded that the cult be disbanded and their leaders arrested, but first amendment barriers have so far prevented a proper investigation into whether this was planned by the leadership. The cults leaders claimed that the attack was done by a “splinter” group within the movement and was not planned by the leadership. The Kitraxians withdrew their ambassador from the US in protest for three months and have threatened military retaliation against the cult if there is another incident involving its members. The cult was told they would have a single month according to the accords, and if justice was not done, the Kitraxians would see to it themselves. The cult has been very quiet regarding the Kitraxians ever since and even withdrew its 24/7 protests of their embassy in Washington DC. The cult in turn suffered months of mass protests by people on Earth against them and have seen their membership plummet.

Kitraxian relations with Russia have been rocky. They grudgingly gave full diplomatic access due to the aid they received on first contact from a Russian citizen. However the Russians have been warned that diplomatic access could be restricted if their country heads down the wrong path. The Kitraxian ambassador has been withdrawn several times as an act of simple protest, the only real influence that the Kitraxians can use towards any Earth government as laid out in the accords.

Takeover worries:

Given how advanced the Kitraxians are, some worry they might take over Earth. The Kitraxians have sought to allay such fears, explaining they would have attacked already if they were going to do such a thing. They also point out that interstellar war is incredibly expensive. They have run projections on how much it would cost to fight a war if necessary and even scenarios involving the conquest of a less developed world would cost more than it was worth to take a planet. Conquest would involve destroying much of the planets infrastructure and would cost untold sums to move the troops and ships and weapons to perform such a feat. Spending decades fighting and subduing survivors would simply not work out economically. They concluded by pointing out that it was far cheaper to find and colonize a non claimed habitable world, even if it meant terraforming, than to try to take an already claimed world.

These assurances have done little for those who have it set in their mind that the Kitraxians are dangerous on religious or racial grounds and there are plenty of anti-Kitraxian groups scattered across the globe.

Travel to Kitraxa:

Only a handful of Earth people have ever been to Kitraxa and none to any of their two colonies. So far the UN will only authorize a few people to go, all of them diplomats or ex-presidents so far. Due to the accords on transfer of technology, it is considered too risky to allow general travel yet. Since the trip takes at least three weeks one way and involves a month or more on planet before return, no sitting presidents or leaders have traveled there. A few ex-US presidents, a former UK and a former Canadian Prime Minister and an ex-chancellor of Germany have made the trip thus far. There is also a permanent diplomatic post in the Kitraxian capital of Ksharra with a staff of 5, including the ambassador.

It is noted that travel to Kittraxa involves spending most of the time on ship in a decontamination protocol that involves replacing any Earth microbes in the body with similar Kittraxian microbes and extensive use of Kittraxian medical technology to ensure this process is safe for earth born travelers. Constant medical attention is needed in case of reaction or infection.

Kittraxians on Earth:

Only a handful Kittraxians actually live on Earth as part of a peace program. Most live in big cities and are young and untrained in any technology they could transfer to Earth. Letting them stay here allows for people to get to know Kittraxians and become more comfortable with them, and for the Kittraxian visitors to learn to understand the people of Earth better. So far the program has been a success with only a few incidents involving racially or religiously motivated attack. Living on Earth means undergoing a decontamination procedure that replaces the body's natural microbes with Earth equivalents. Kittraxian medical technology is sufficiently advanced to make this replacement process relatively safe. All have been generally well accepted in the communities they live in, though the sight of a Kittraxian in the street will still draw stares and whispers. As the people of Earth eventually develop better technology, more Kittraxian visitors are expected and it is hoped there will be eventual partnership between the races of both planets in peacefully exploring the galaxy.

Thanks for reading! Hope you enjoyed this overview of my species! I hope to make future revisions to add more images for use by artists in drawings!

