

# IRON HEROES

◆ COUNTER COLLECTION ◆

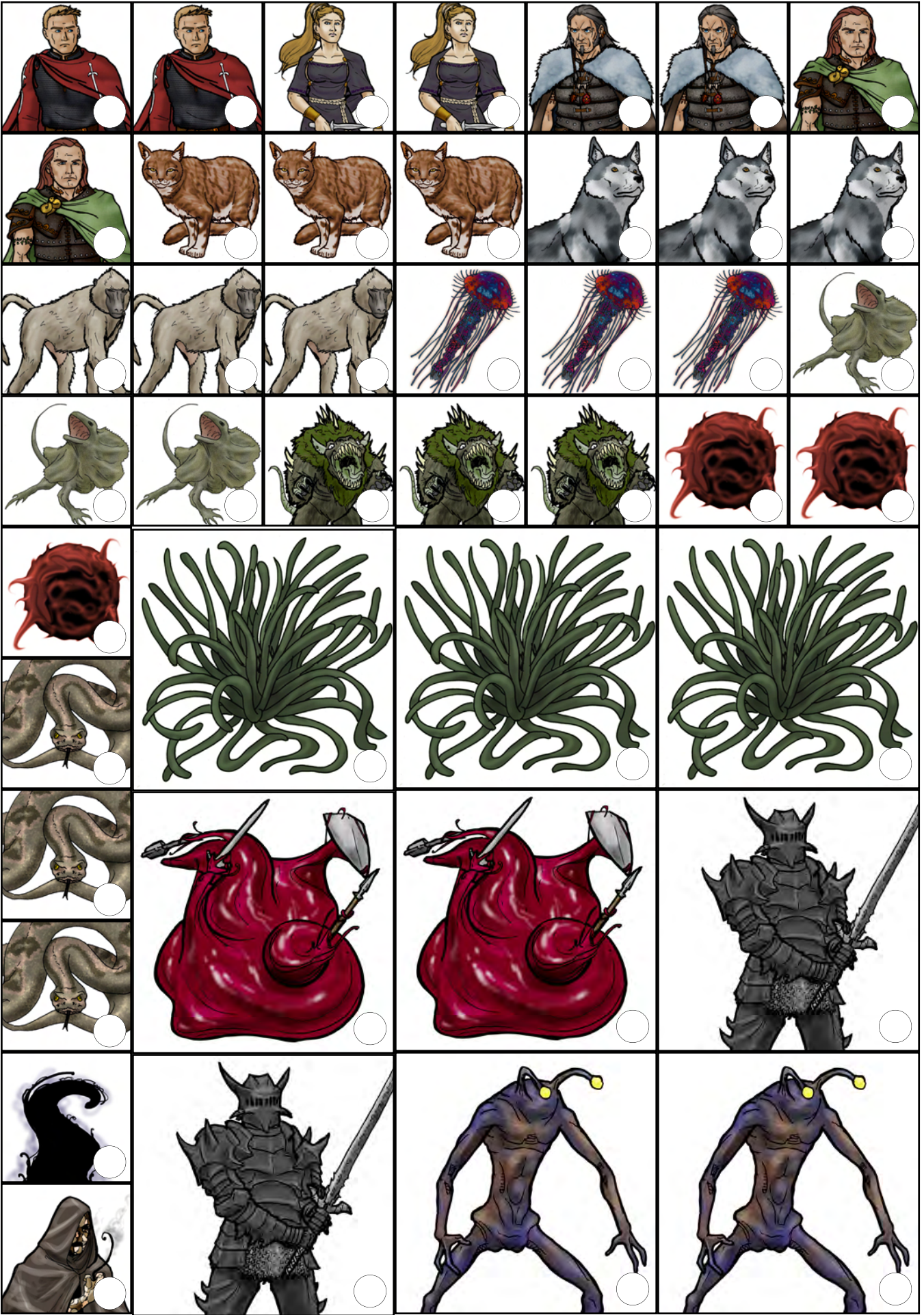


Fierly Dragon

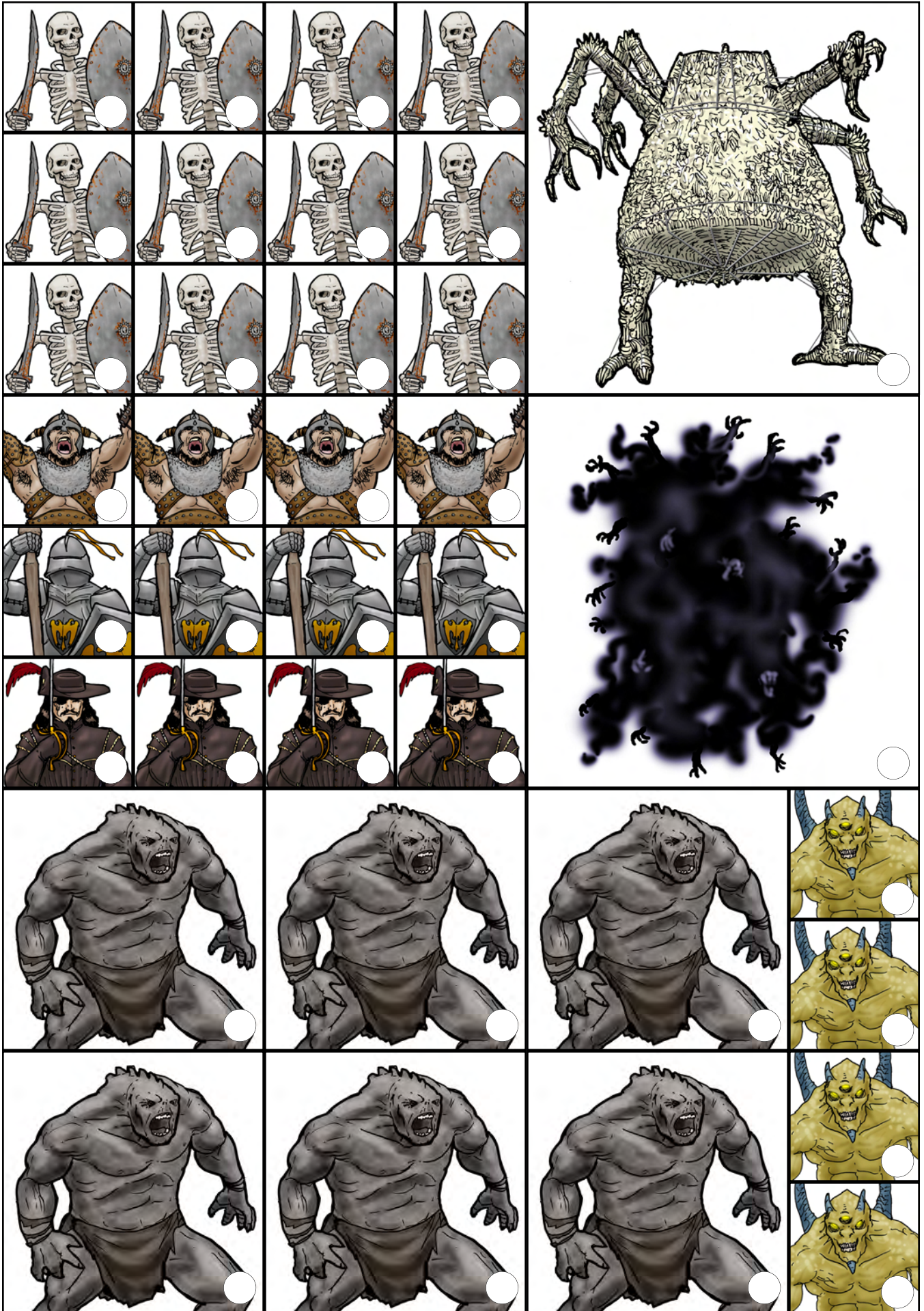
Arcanists (x3), Archers (x3), Armigers (x3), Berserkers (x3), Executioners (x3), Harriers (x3), Hunters (x3), Men-at-Arms (x3), Thieves (x3), Weapon Masters (x3), Devoted\* (x3), Myrmidon\* (x2) (2 of each).  
\* - New classes from the Iron Heroes Player's Companion



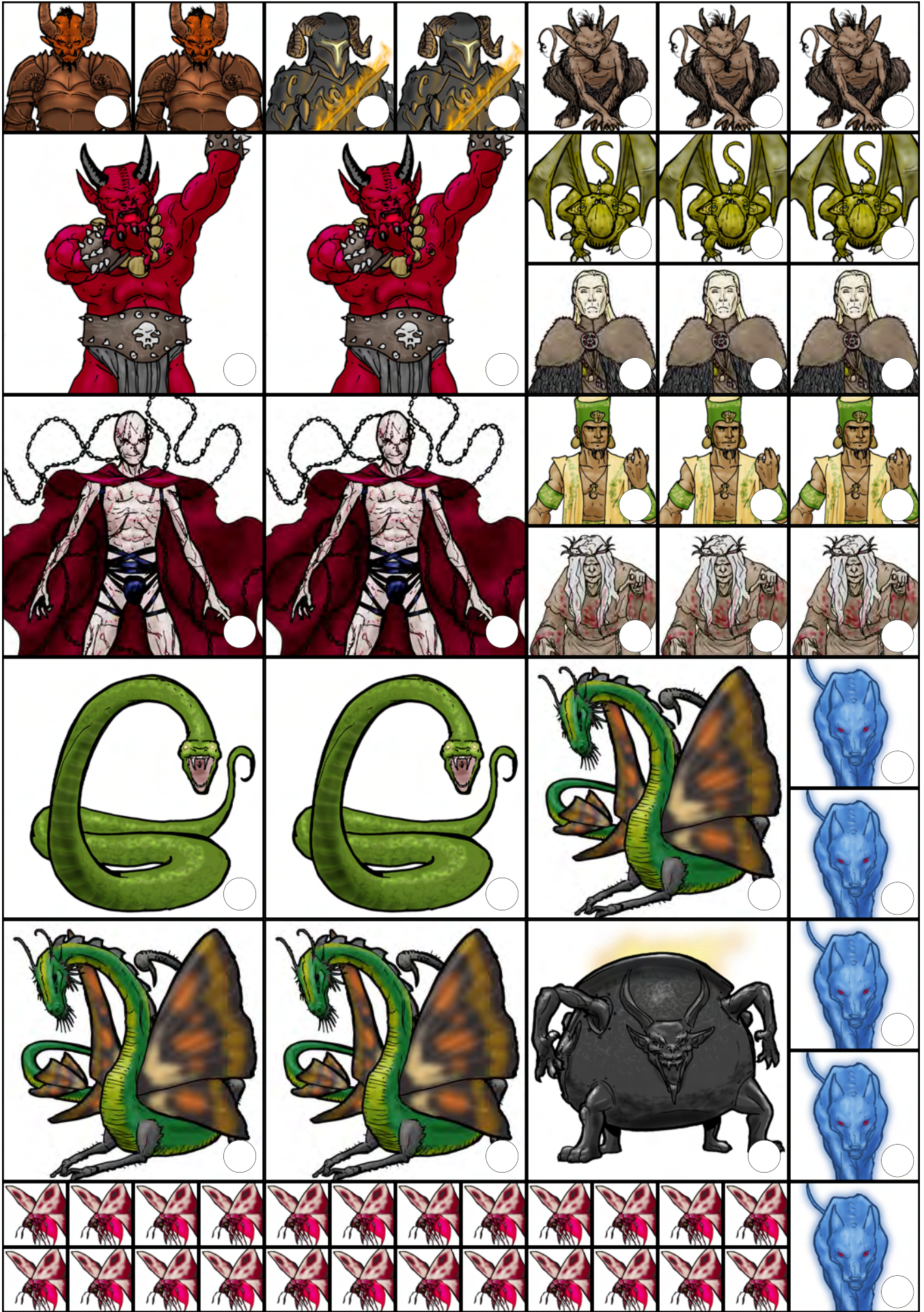
Myrmidon\*, Spiritualists\* (x3), (2 of each)  
 Monsters: Small and Medium Spirit Companions\* (x8) (3 of each), Large Spirit Companion\* (x3), Blade Ooze (x2), Blade Tyrant (x2), Dimensional Prowler (x2), Dire Gloom, Kuh'lani. \* - New classes or creature from the Iron Heroes Player's Companion.



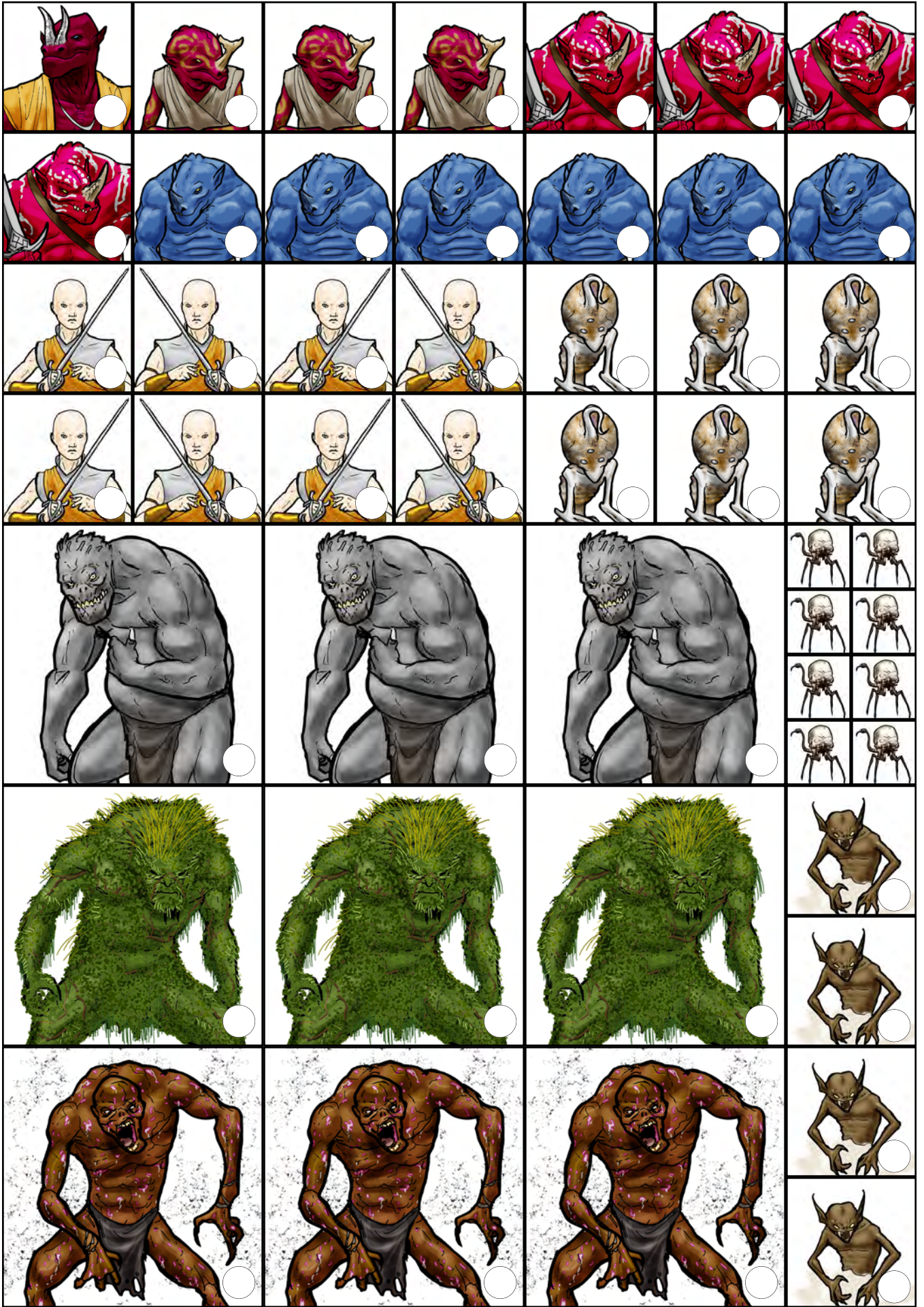
Monsters: Skeletons (x12), Bone Machine, Clawing Dark, Cliff Ogre (x6).  
Villain Classes: Champions (x3, 4 of each), Demonic Brute (x4).



Monsters: Flesh Flyer (x2), Emerald Serpent (x2), Gossamer Wurm (x3), Iron Devil, Hunting Spirit (x5), Glitterwing (x24)  
 Villain Classes: Demonic Brute (Large x2), Demon Knight (x2, 2 each), Demonic Minion (x2, 3 each), Dread Sorcerer (x3, 3 each).



Monsters: Hundoon (Royal, Overseer x3, Warrior x4, Worker x6), Paeldrin (x8), Pripisiug (x6), Gray Troll (x3), Plague Giant (x3), Necrophage (x8), Sand Homunculus (x4)



Monsters: Selvrin (x6), Skaerrin, Ungulak (x2), Incarnation, Shellback (x3), Trondar (x7) Vardrag (x2)

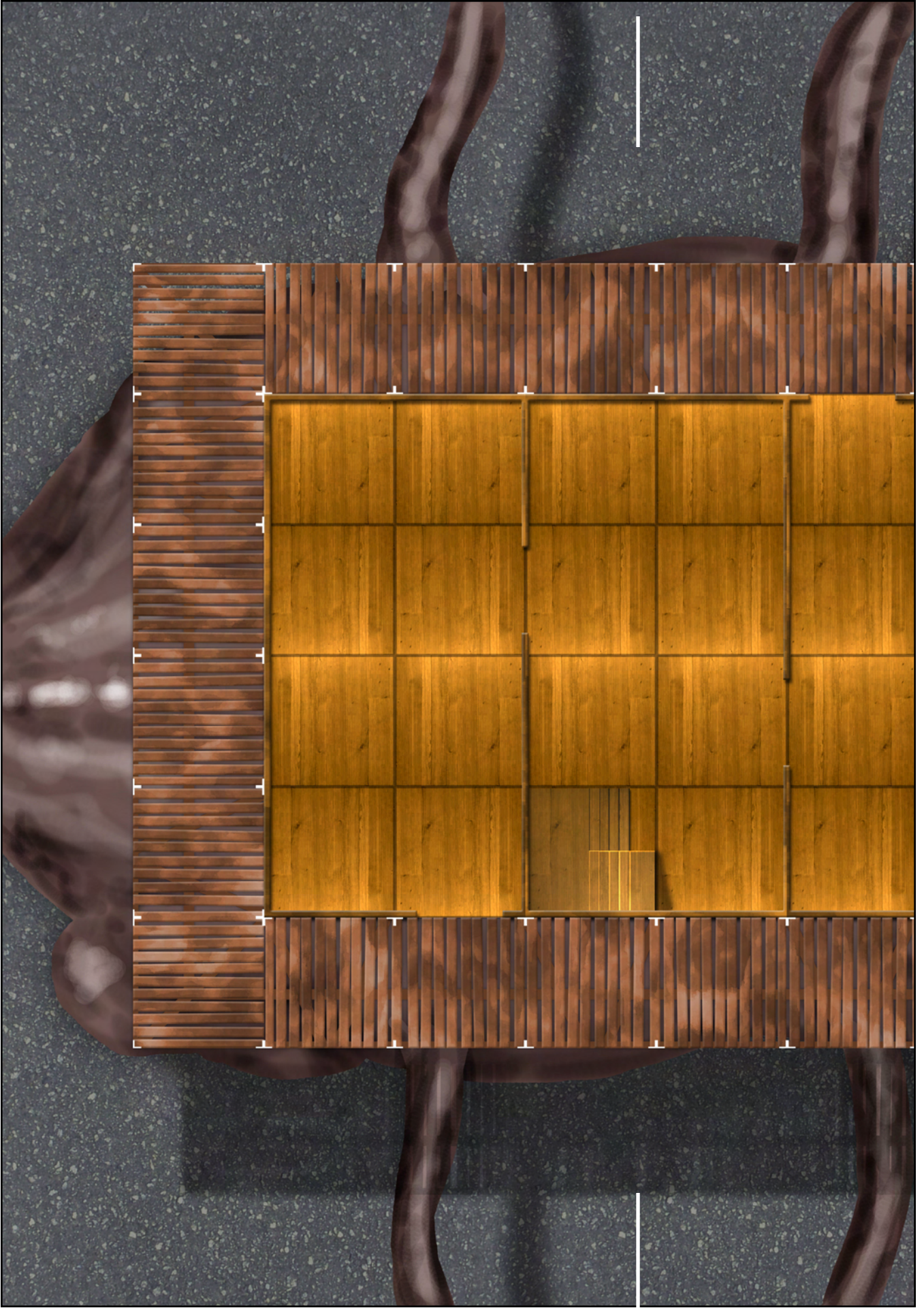


Villain Classes: War Leader (x3, 3 of each), Demon Knight (x2, 1 of each).  
Monsters: Incarnation, Vardrag (x2), Horse (x8)

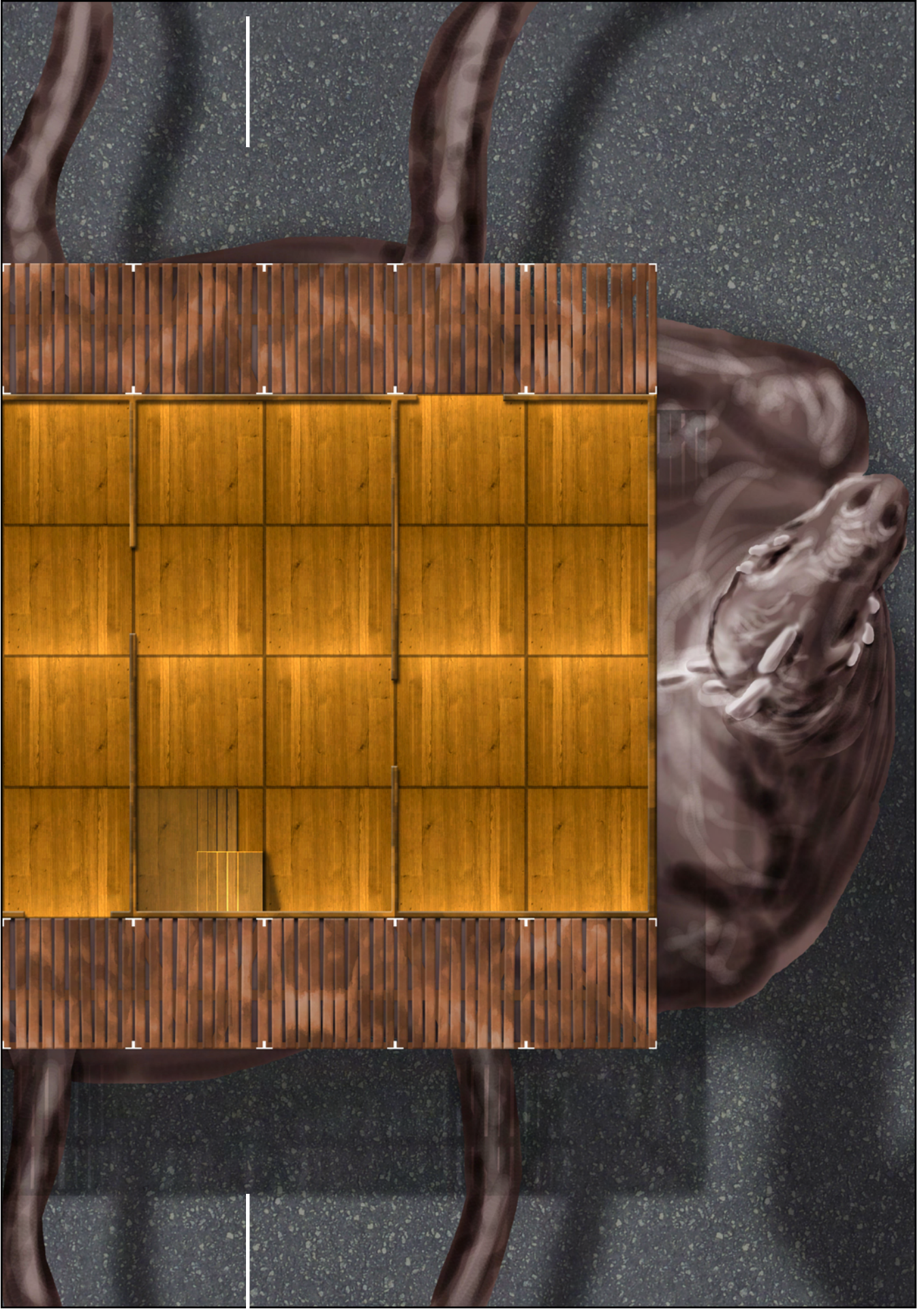




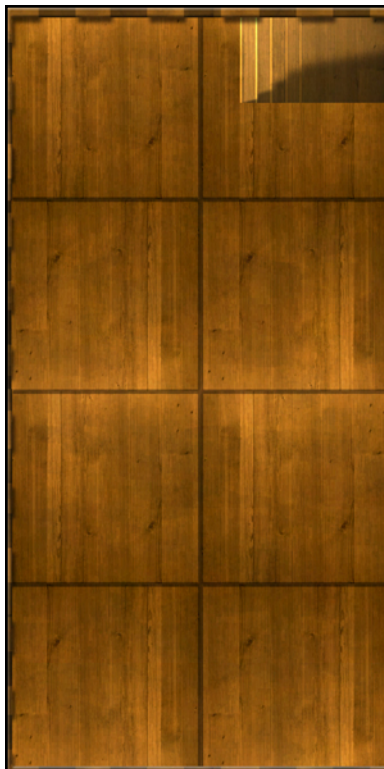
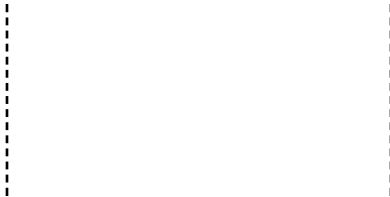
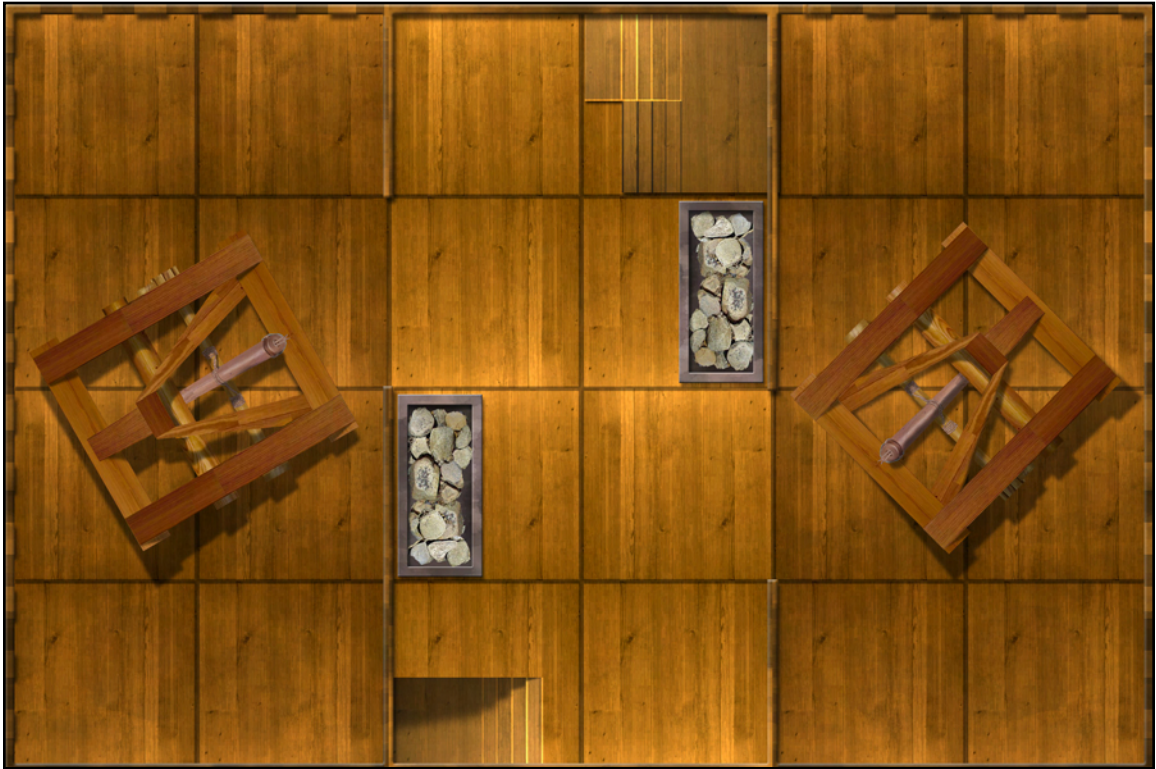
Colossus of Thard (Rear): To assemble the 10-by-10 inch Colossus, align the white line on this counter to the white line on the front counter and glue them together).



Colossus of Thard (Front): To assemble the 10-by-10 inches Colossus, align the white line in this counter to the white line in the rear counter and glue them together). Refer to Page 9 for the upper levels of the Colossus' towers.



Colossus of Thard (Second and Third Levels)



Colossus of Thard (optional 1-page counter): This counter is 7 in. by 10 in. The Colossus' fighting space includes another 1.5 in. to either side.

