



©TM

# Village Works™

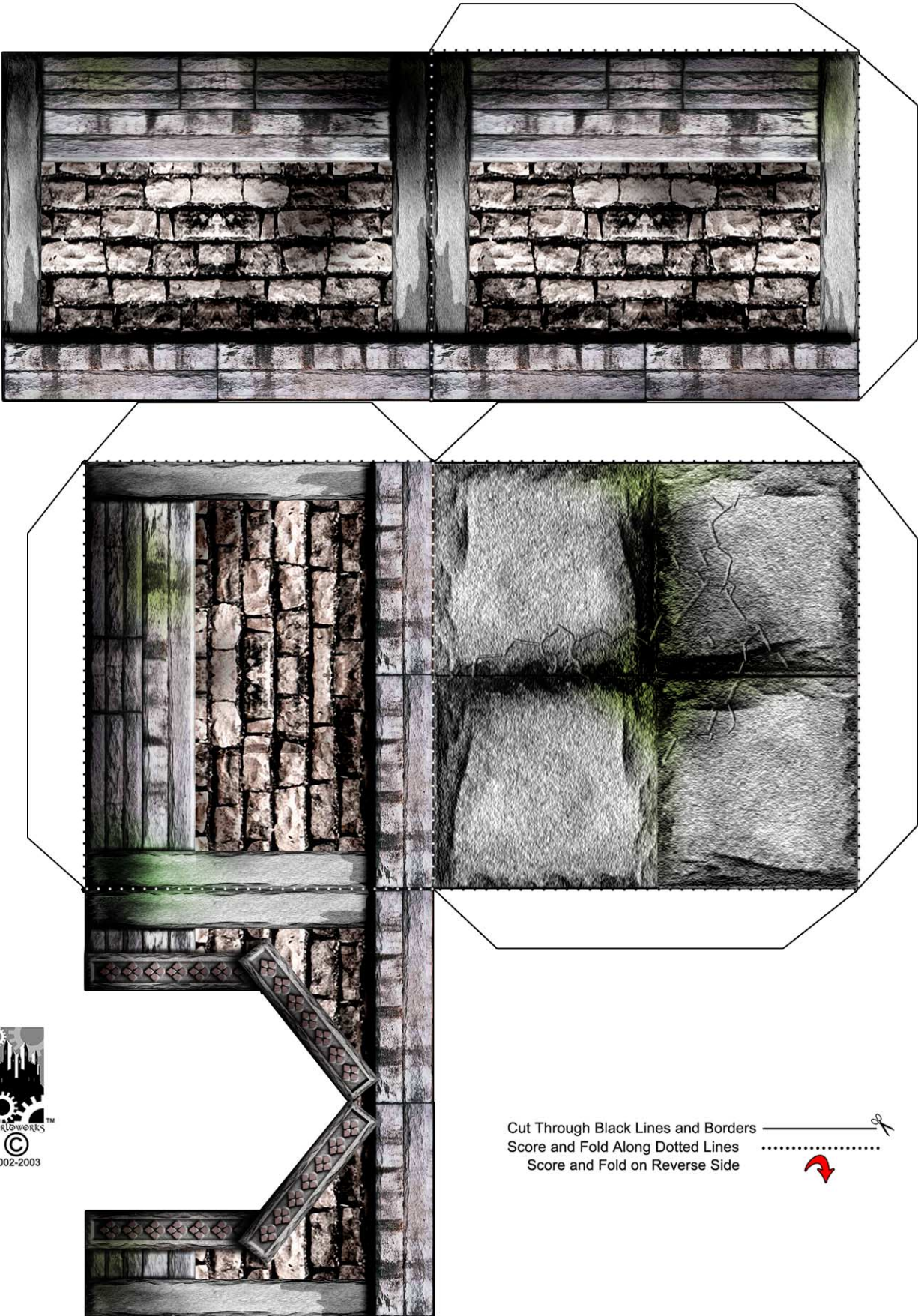
Copyright 2002-2003 WorldWorks



## DUNGEONWORKS ENTRANCE



In the interest of continuity I thought it would be fun to include an entrance to WorldWorks previous release: DungeonWorks. Well, here it is! The perfect compliment to your ever-expanding WorldWorks model set collection. Place it anywhere and you'll have them shaking in their boots!

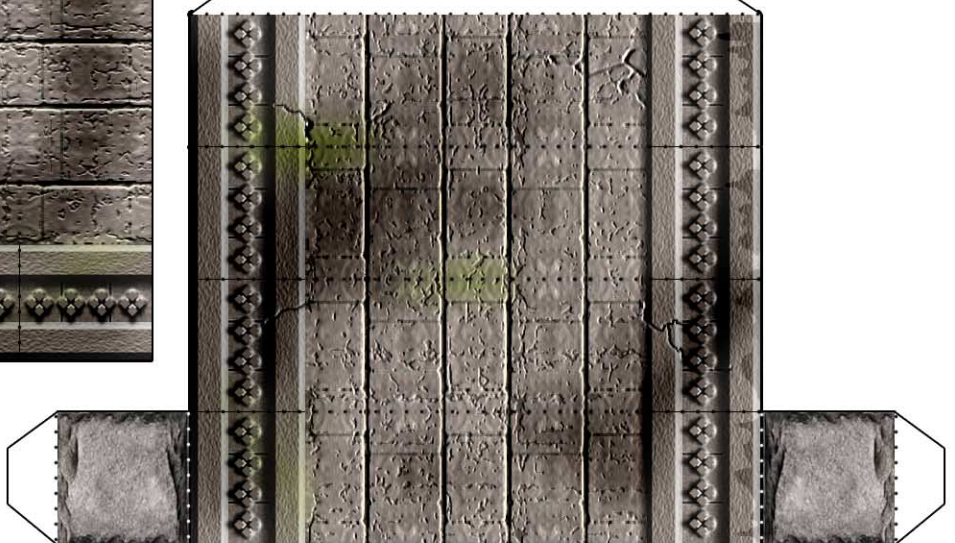
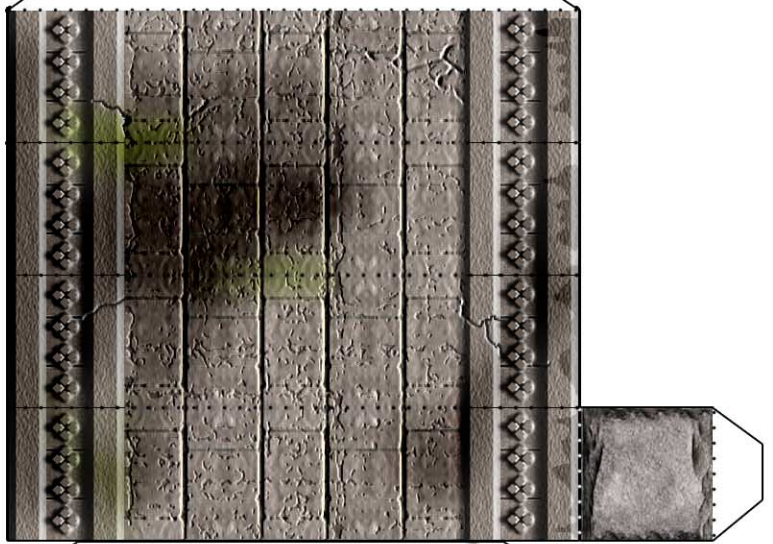
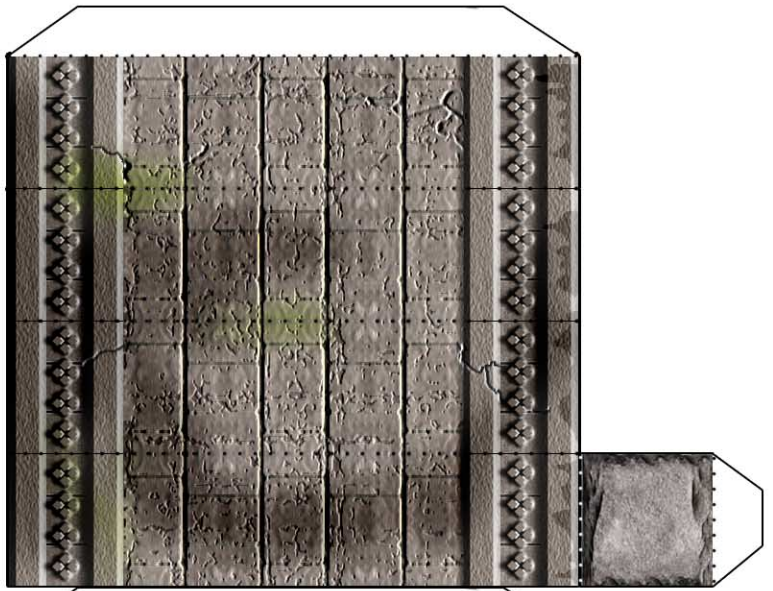
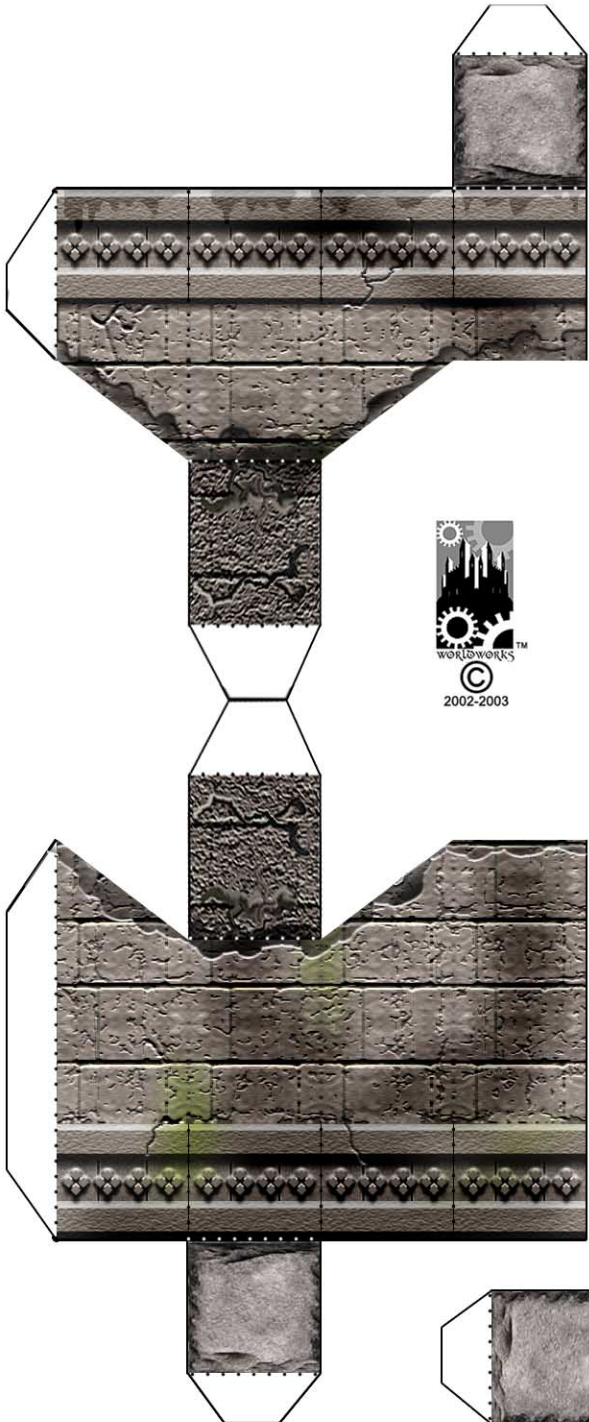
- Cut, score and fold the templates as marked. There is no reverse side scoring on this set so you shouldn't have any problems.
- On the main building, glue the wall tab to the adjoining wall.
- Glue the three roof tabs to the surrounding wall and set this section aside
- Construct the five columns. Use a pencil or any skinny implement if your fingers are unable to reach the glue tabs.
- Before gluing the main building section to the pg.4 ground tile you may want to color the inside of the building black. This task takes no time with a thick black felt marker.
- Glue the bottom building tabs to the pg.4 ground tile. Be sure the glue tabs are facing the inside of the building. You can easily line up the building with the black square outline on the ground tile.
- Glue your column sections to the main building as shown in the photos. You do have the option to place them however you wish ;)
- Sandwich and glue the two main doors. One of the doors has a glue tab that allows you to mount the door as if hinged. The other door may be placed anywhere you choose.

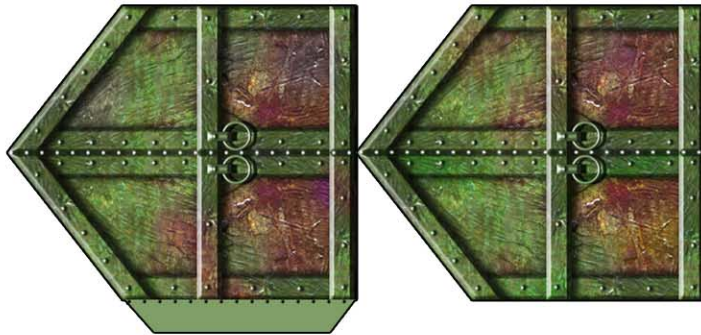




Cut Through Black Lines and Borders   
Score and Fold Along Dotted Lines .....  
Score and Fold on Reverse Side 

Cut Through Black Lines and Borders   
Score and Fold Along Dotted Lines .....  
Score and Fold on Reverse Side 





Cut Through Black Lines and Borders ———— ✂  
Score and Fold Along Dotted Lines .....  
Score and Fold on Reverse Side ↻