



©TM

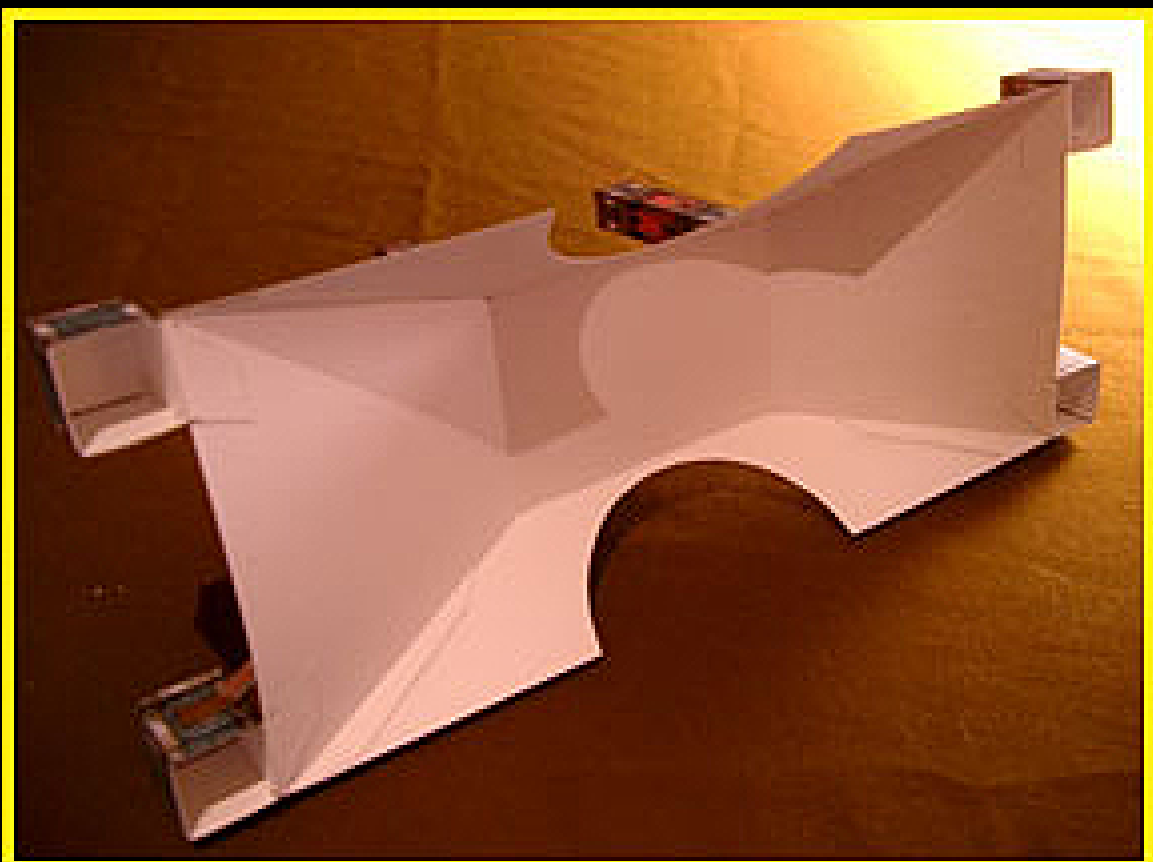
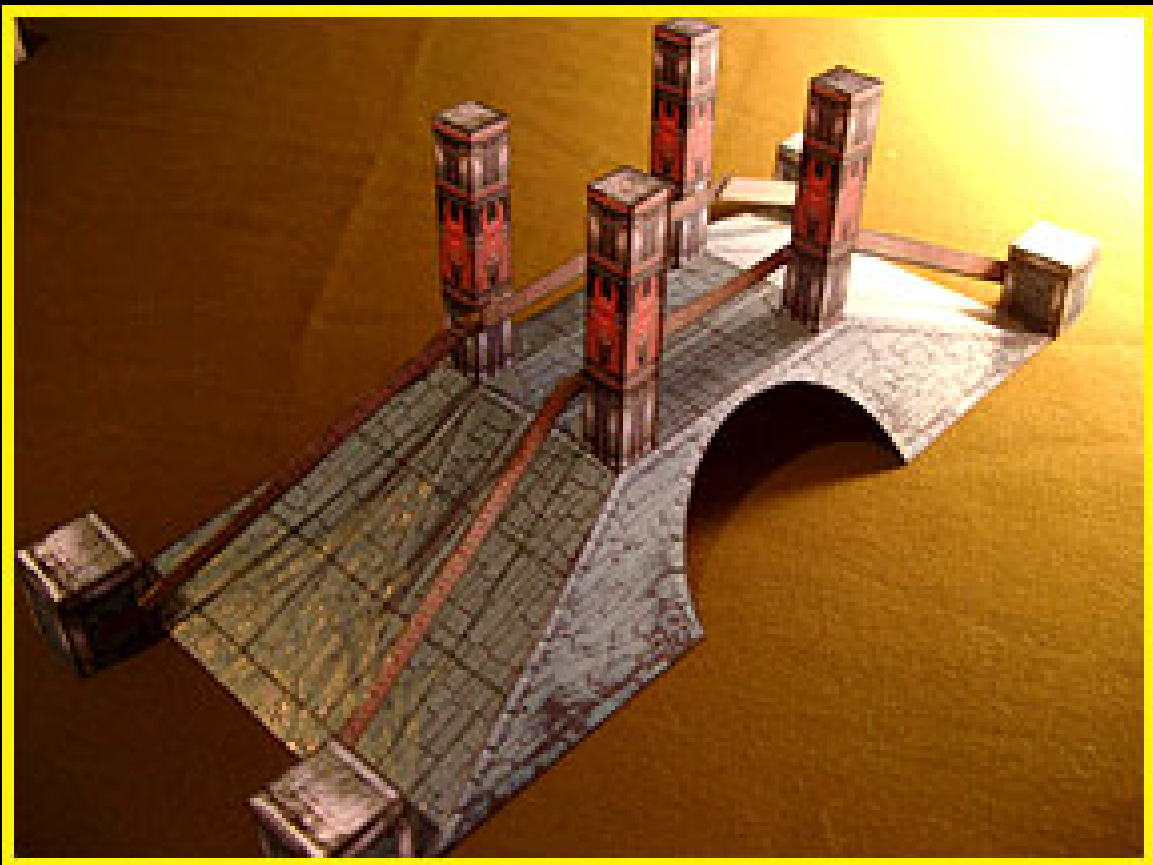
# Village Works™

Copyright 2002-2003 WorldWorks


## BLOOD BRIDGE

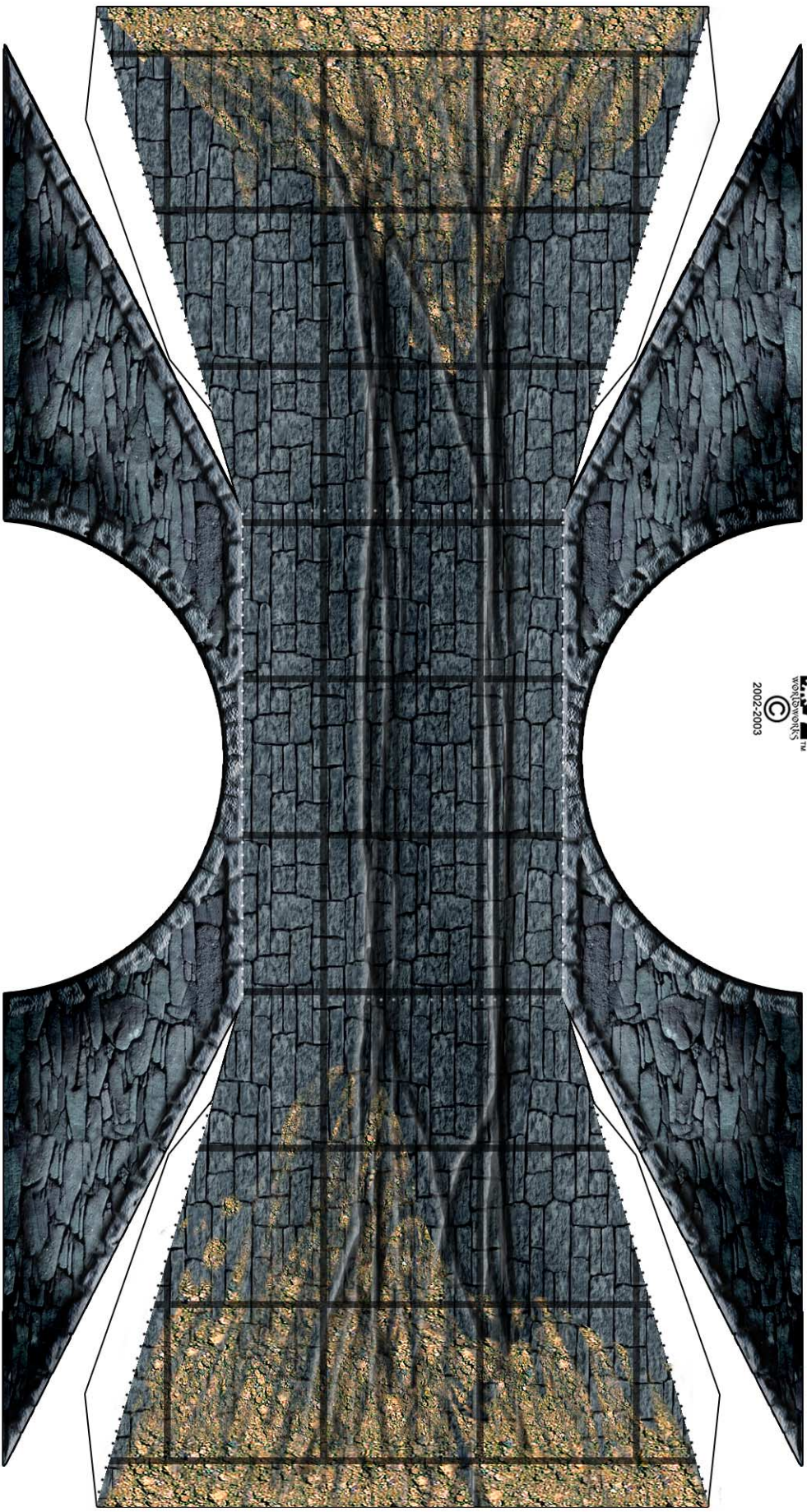
Ahh...the Blood Bridge. A lovely relic for your dream town...

- Cut, score and fold the templates where noted
- Glue the main bridge tabs to the underside of the bridge (As with the basic bridge).
- Construct your totems and anchors. You will need to use a pencil or some other skinny object in order to secure the totem glue tabs (Your fingers wont fit).
- Once you have constructed your totems and anchors take the four totems and glue one at each corner of the uppermost bridge section. Make sure that the glue tabs are pointing to the inside of the bridge.
- Place the remaining four anchors at the base of the bridge. Glue them to the underside of the bridge (See bottom photo). Yes, everything is flopping around right now but bare with me. The strength of this model comes with the final step...
- Fold, Sandwich and glue the two remaining handrails. Take one handrail and center it on one side of the bridge. Glue this rail in place just below the main totem markings, then glue each end to the anchors. Repeat this process on the other side.

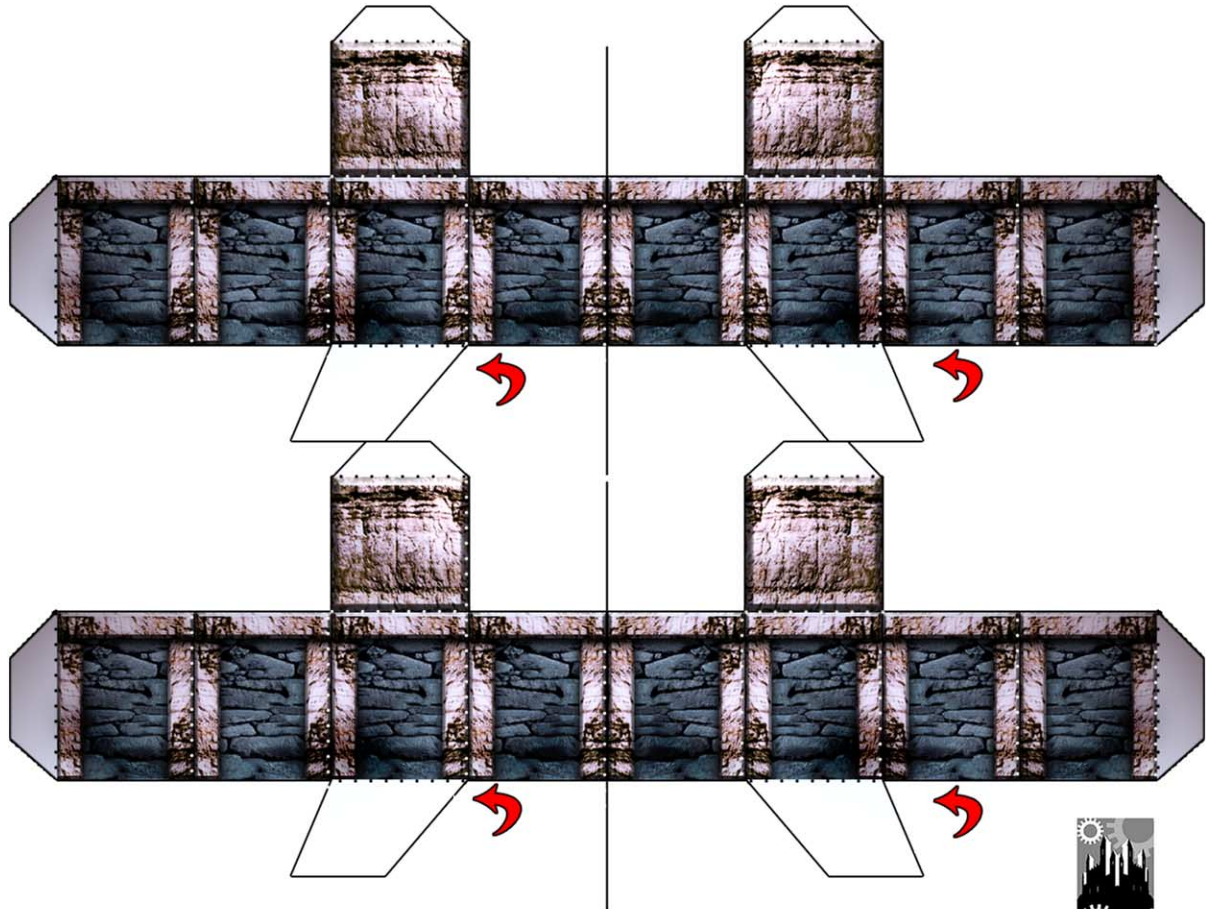
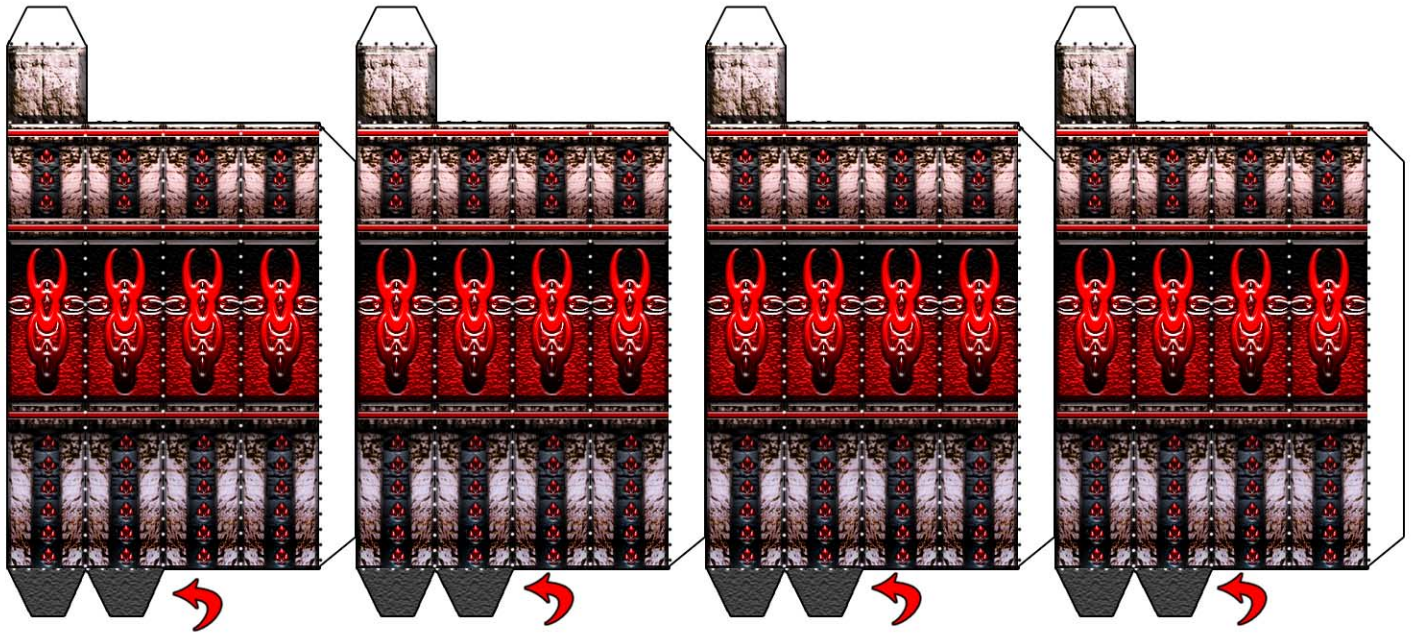





Cut Through Black Lines and Borders \_\_\_\_\_ ✂  
Score and Fold Along Dotted Lines .....  
Score and Fold on Reverse Side 







Cut Through Black Lines and Borders   
 Score and Fold Along Dotted Lines .....  
 Score and Fold on Reverse Side 