

SW1

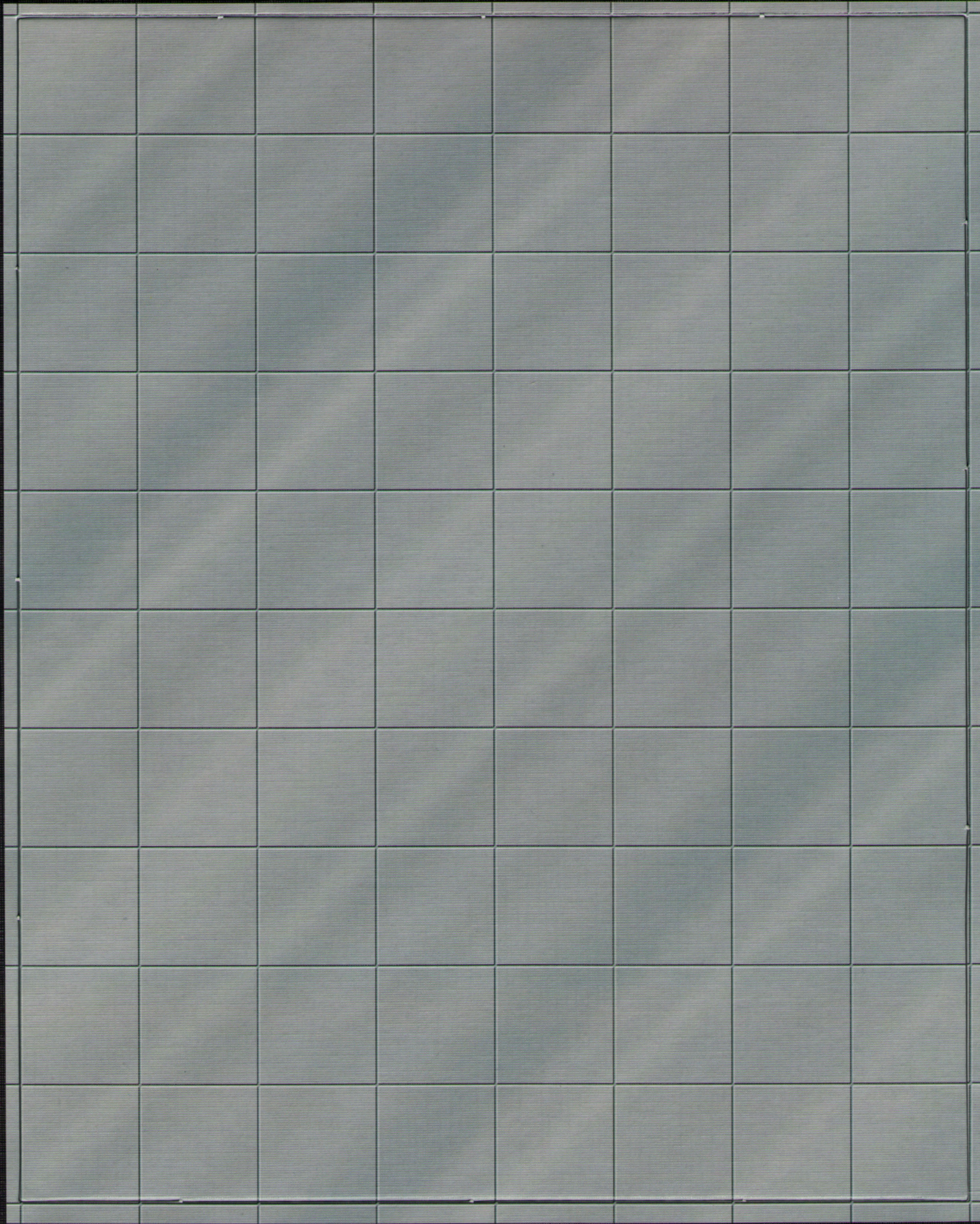
AGE 12+

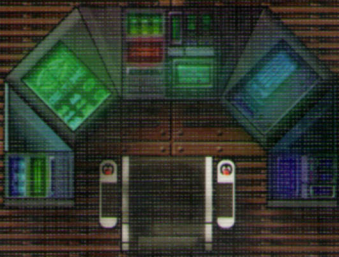
# STAR WARS™

## GALAXY TILES™

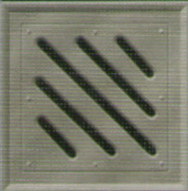
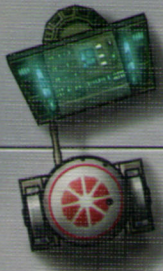


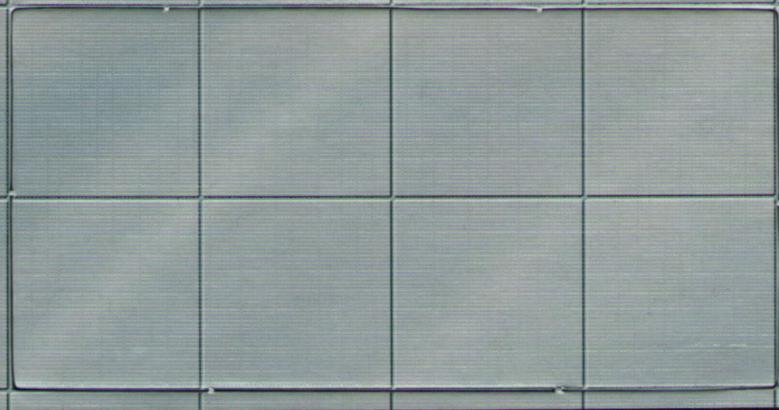
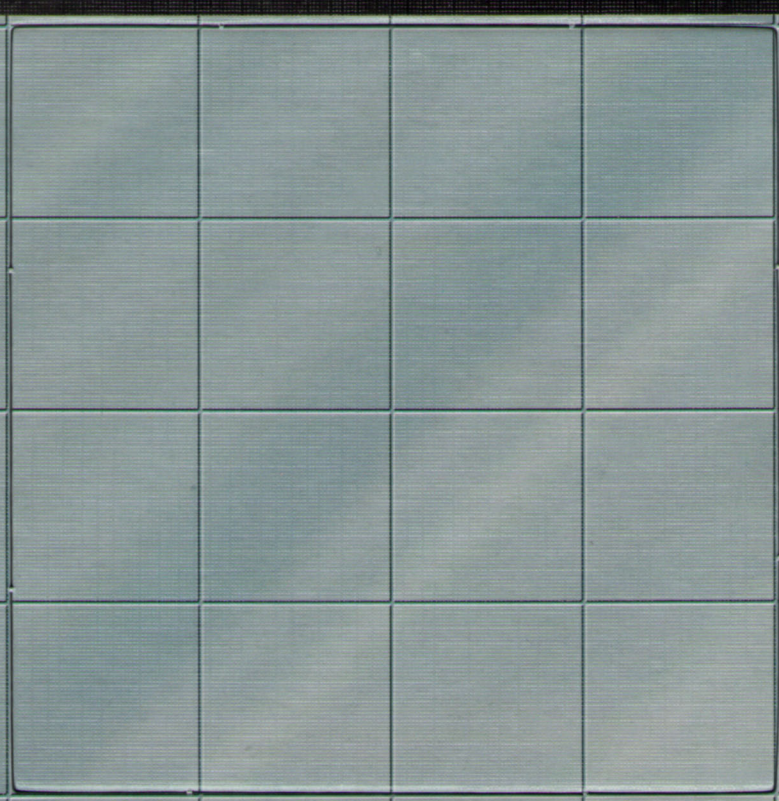
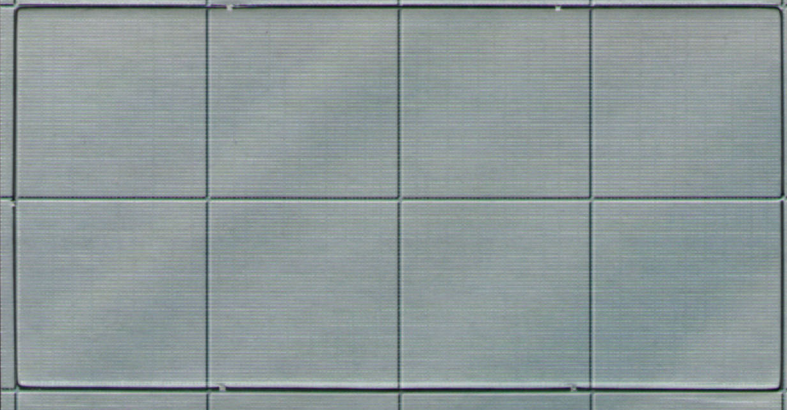
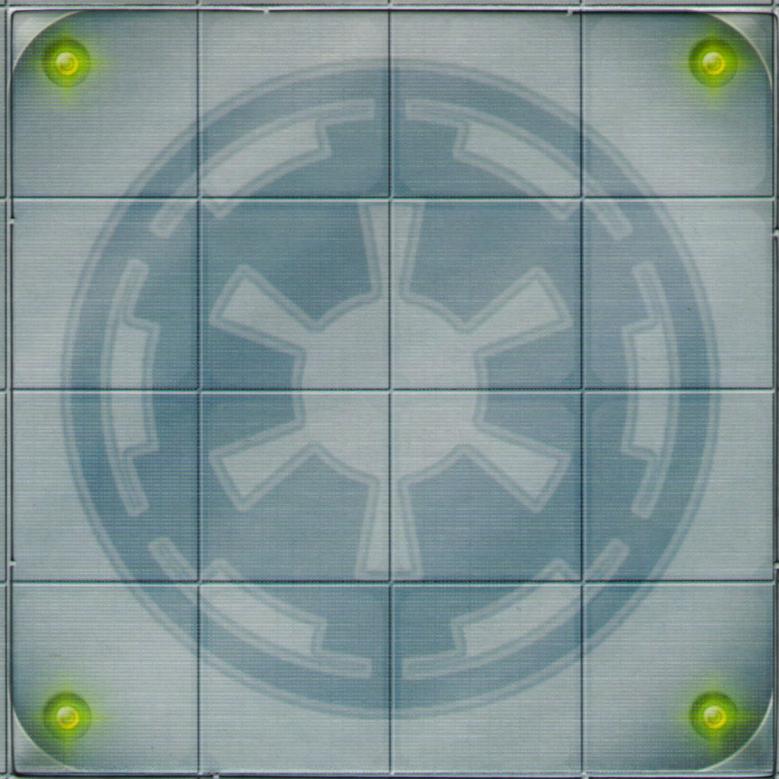
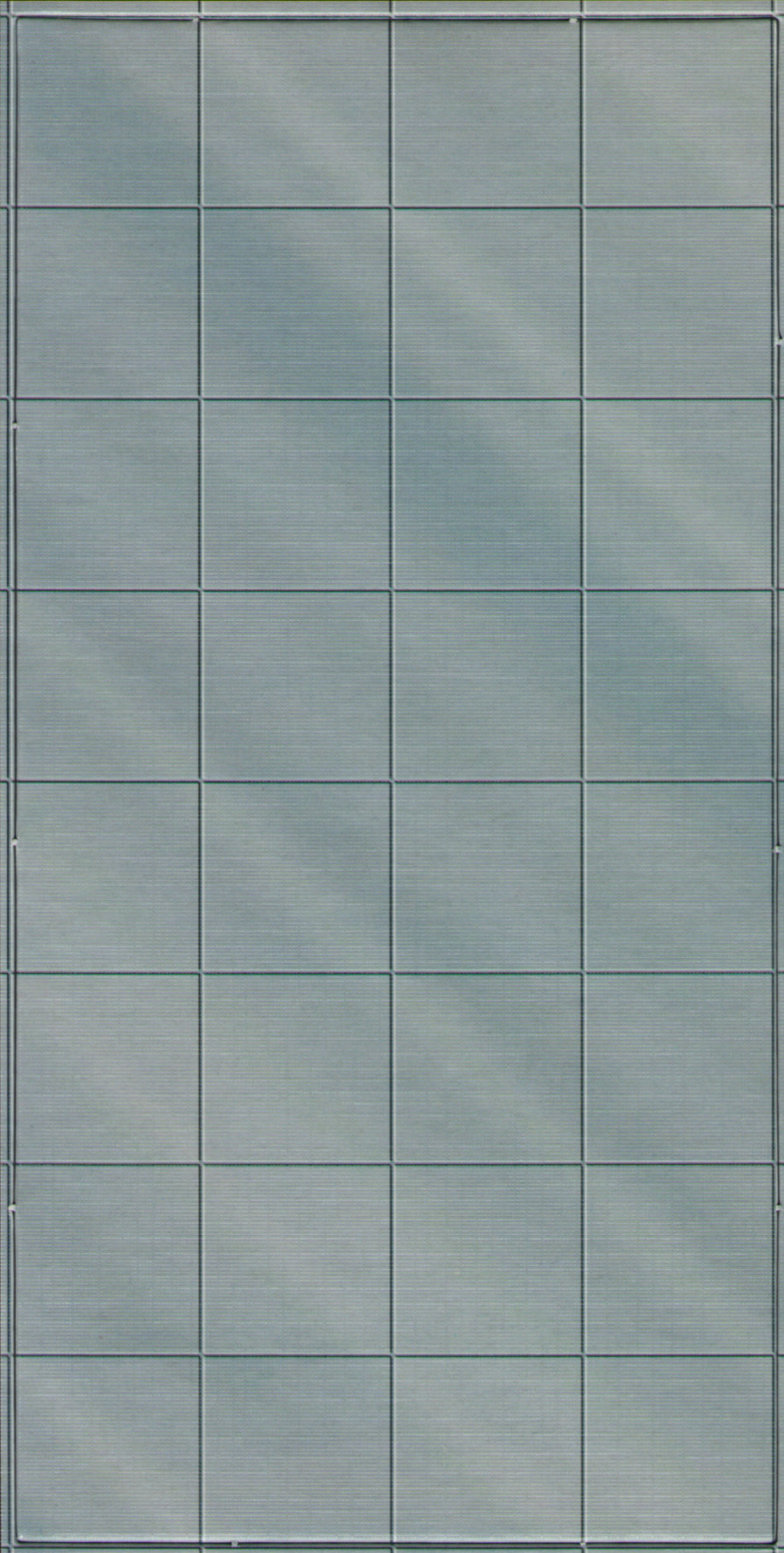
**CUSTOMIZABLE TERRAIN FOR USE WITH  
THE *STAR WARS*® *ROLEPLAYING GAME***









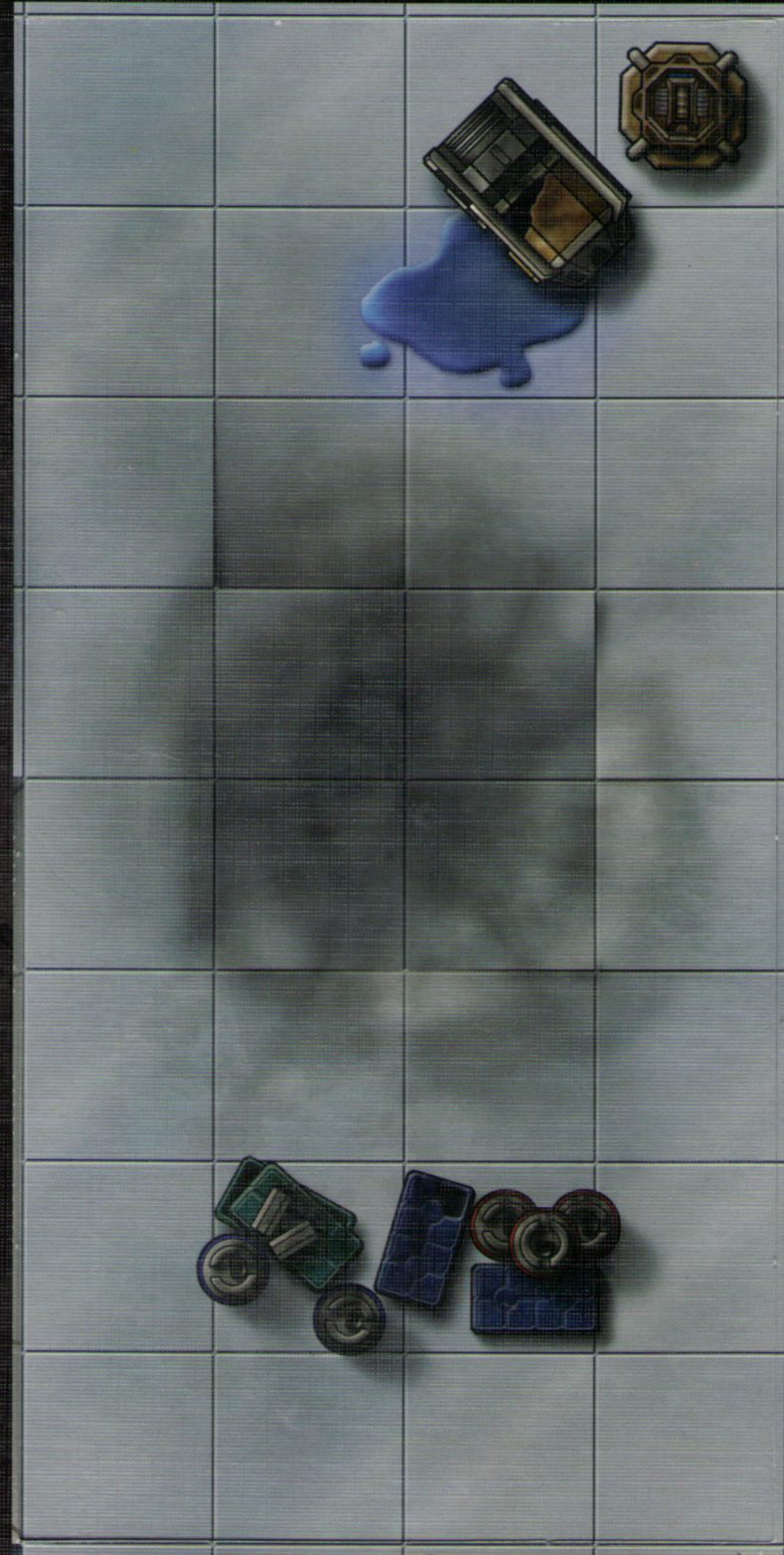
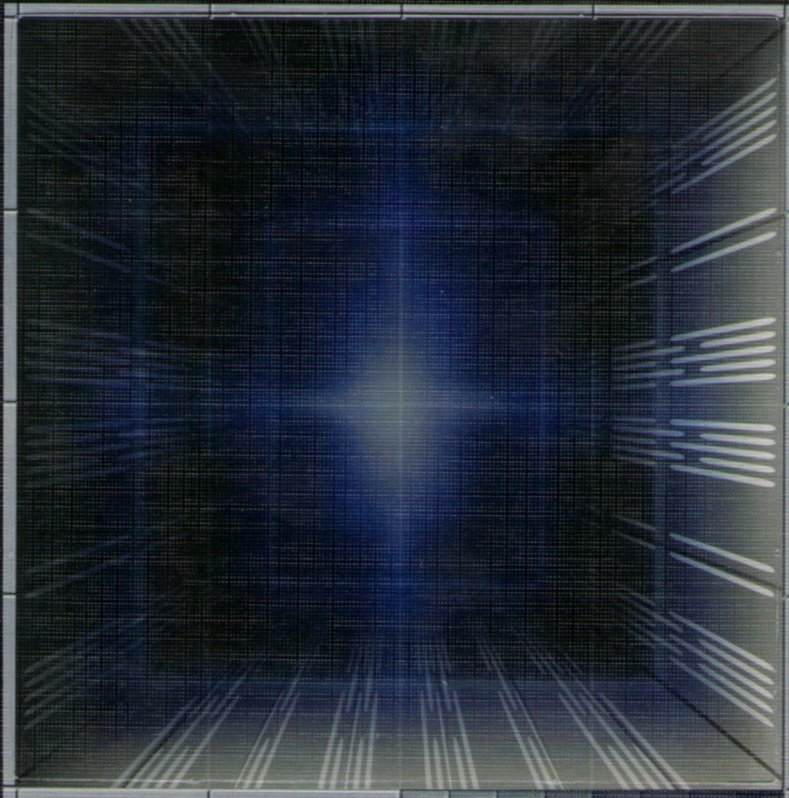
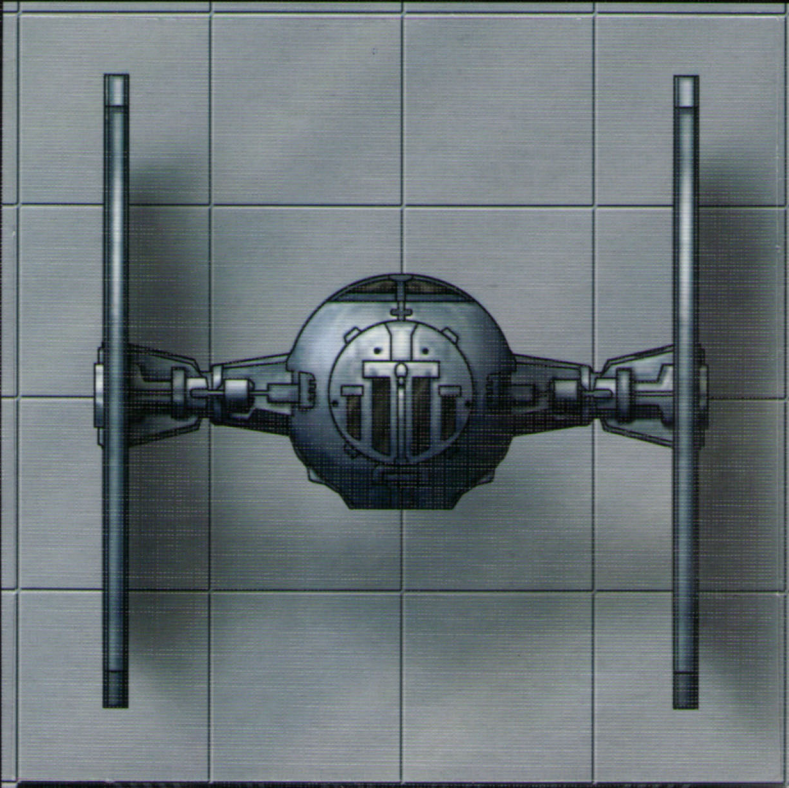


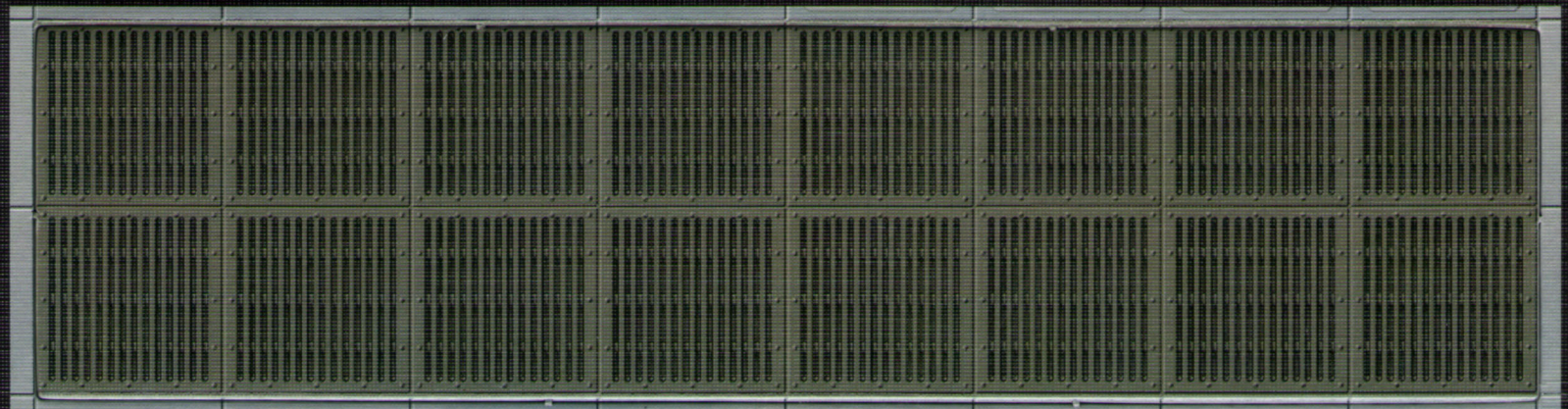


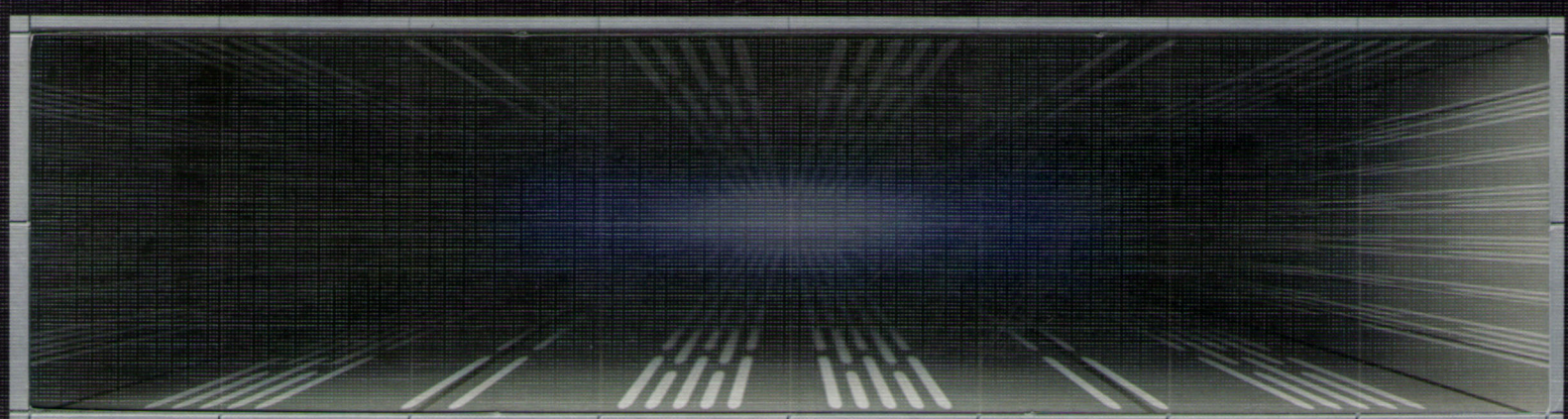
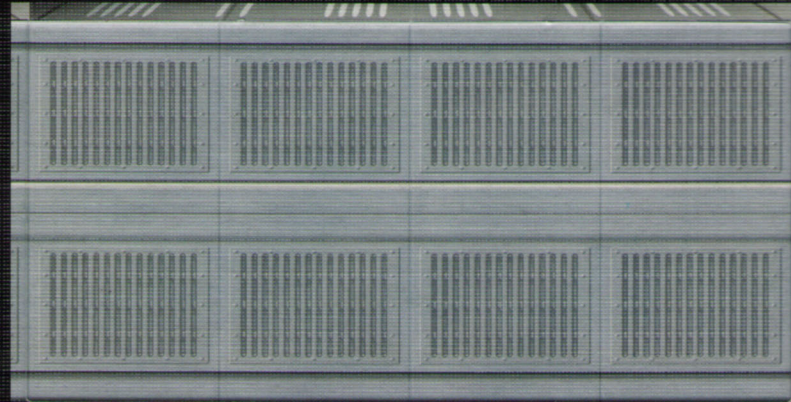
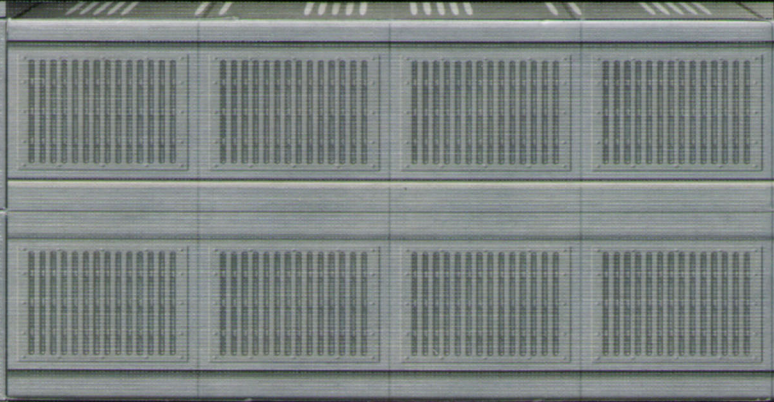
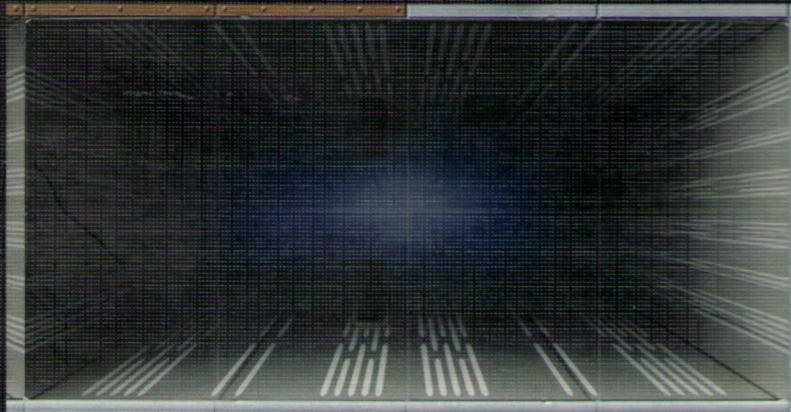
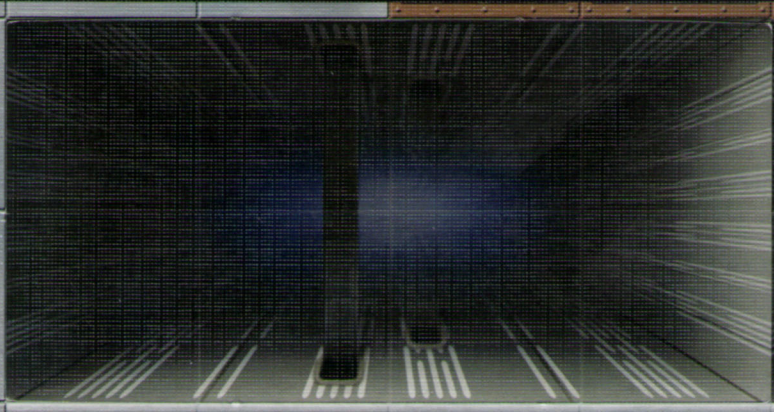
4A

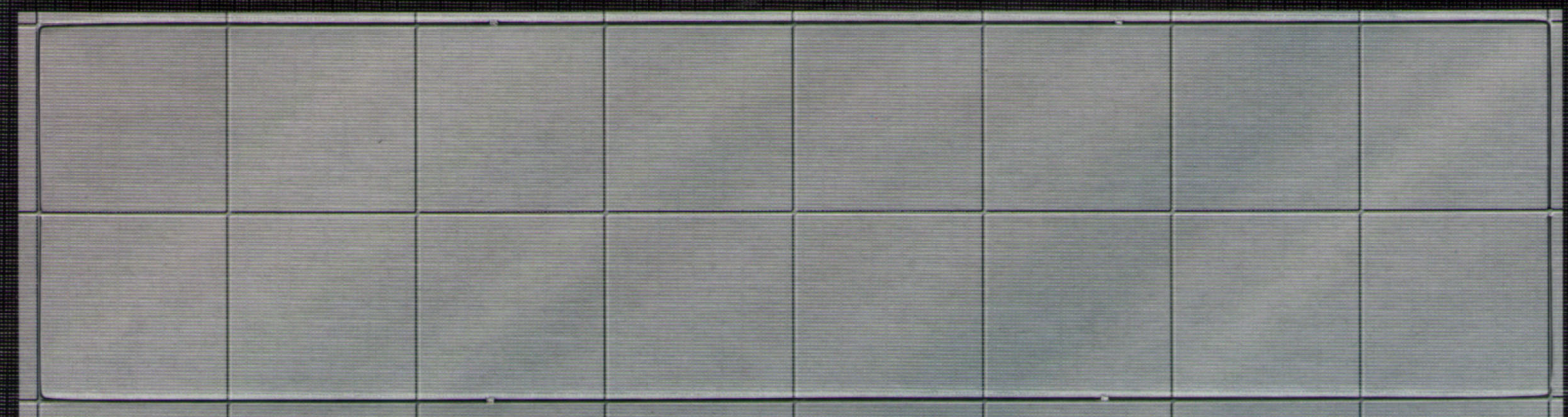
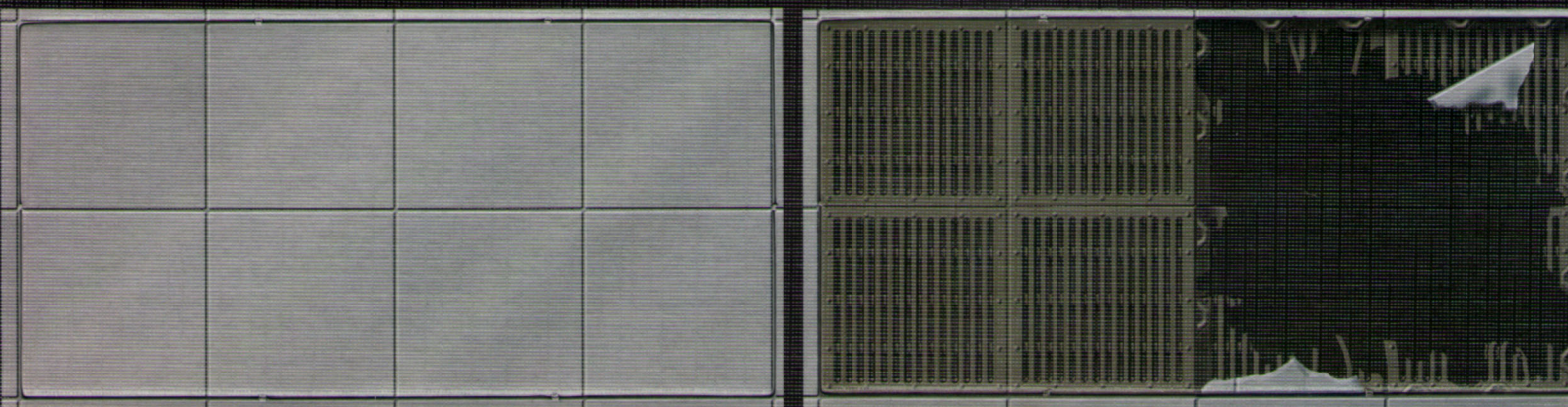
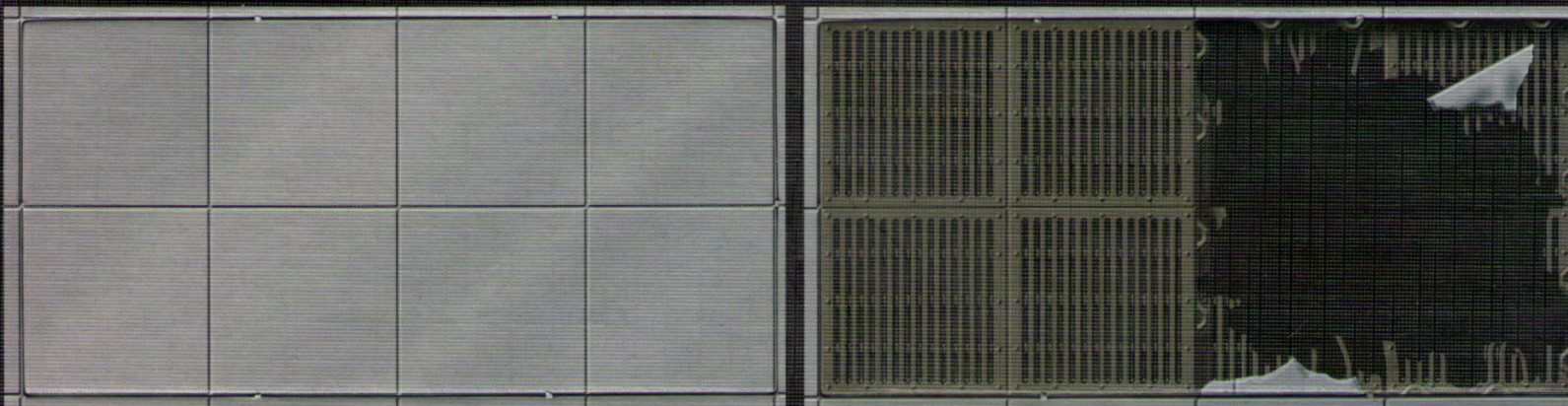


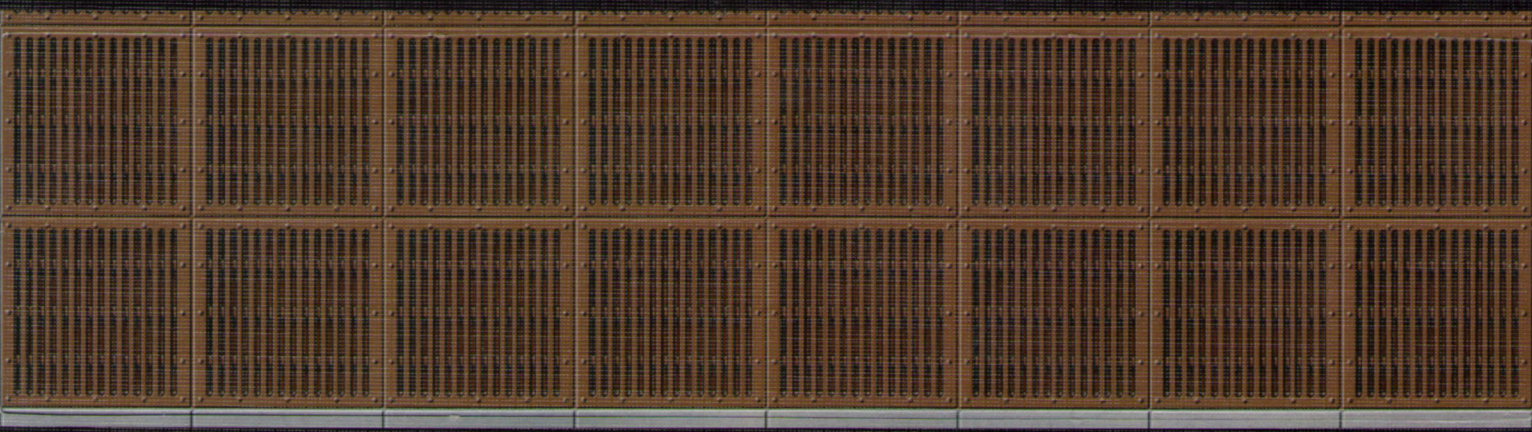
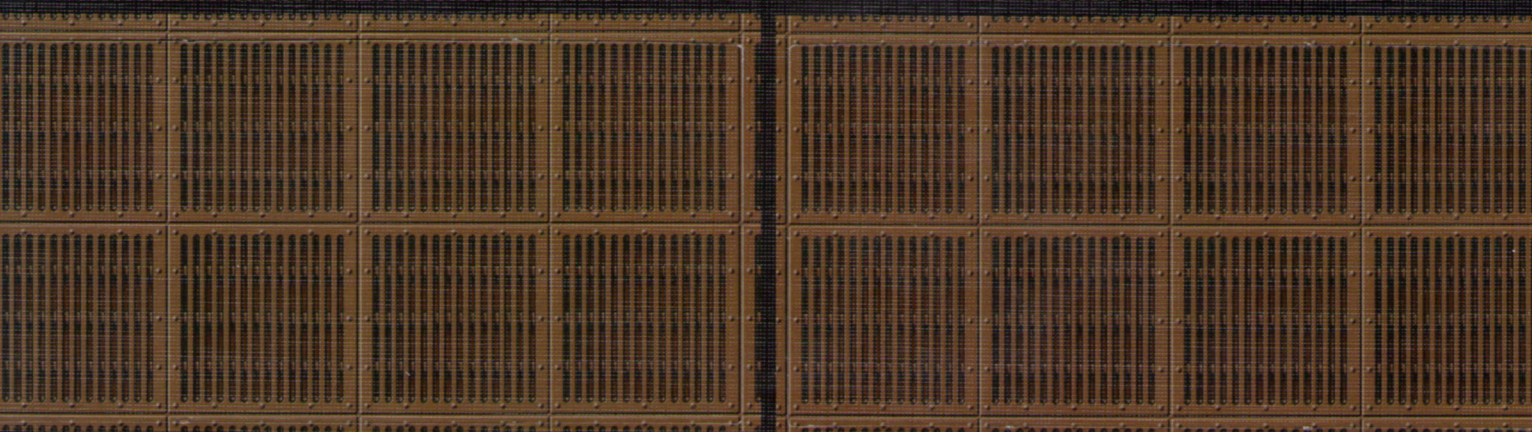
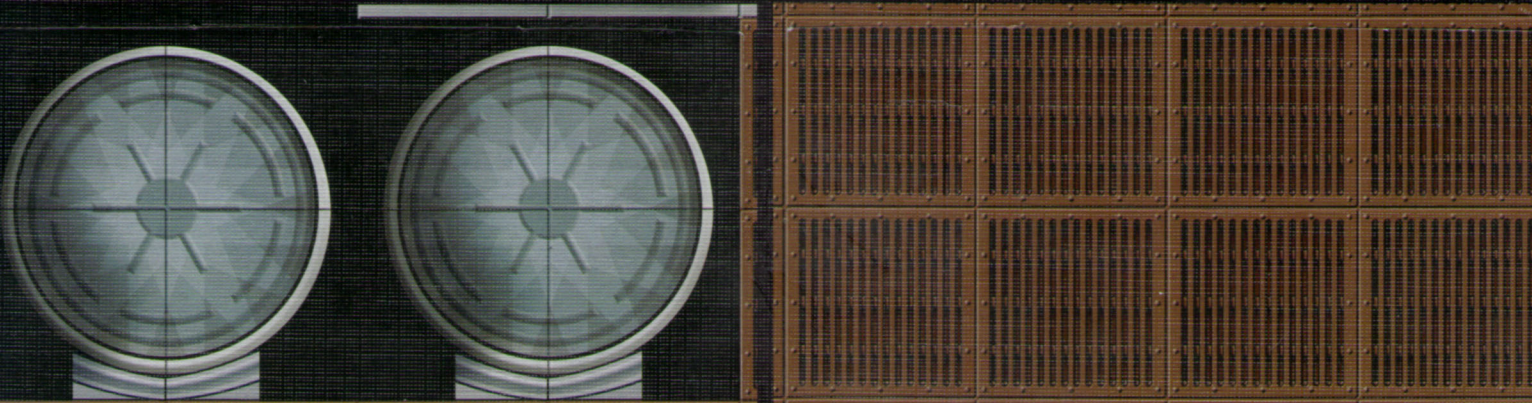
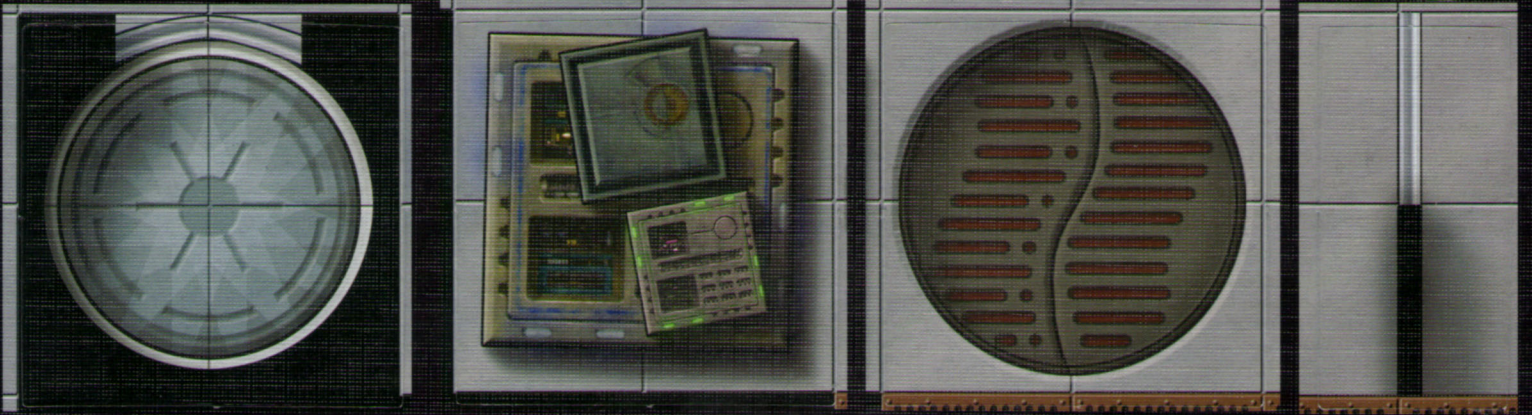
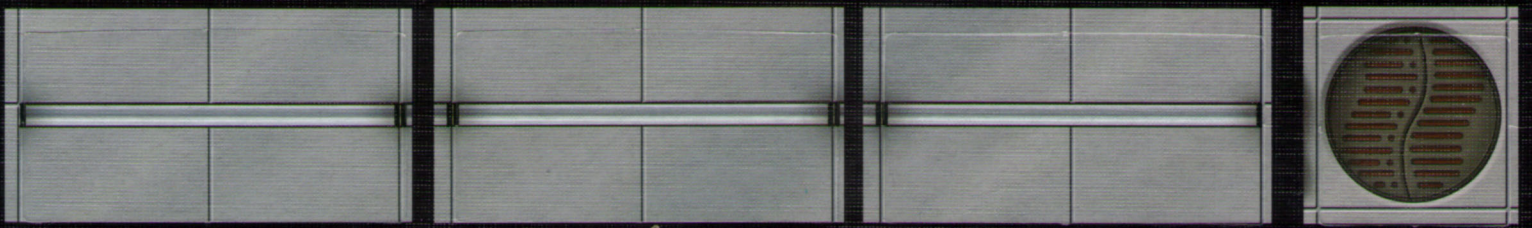










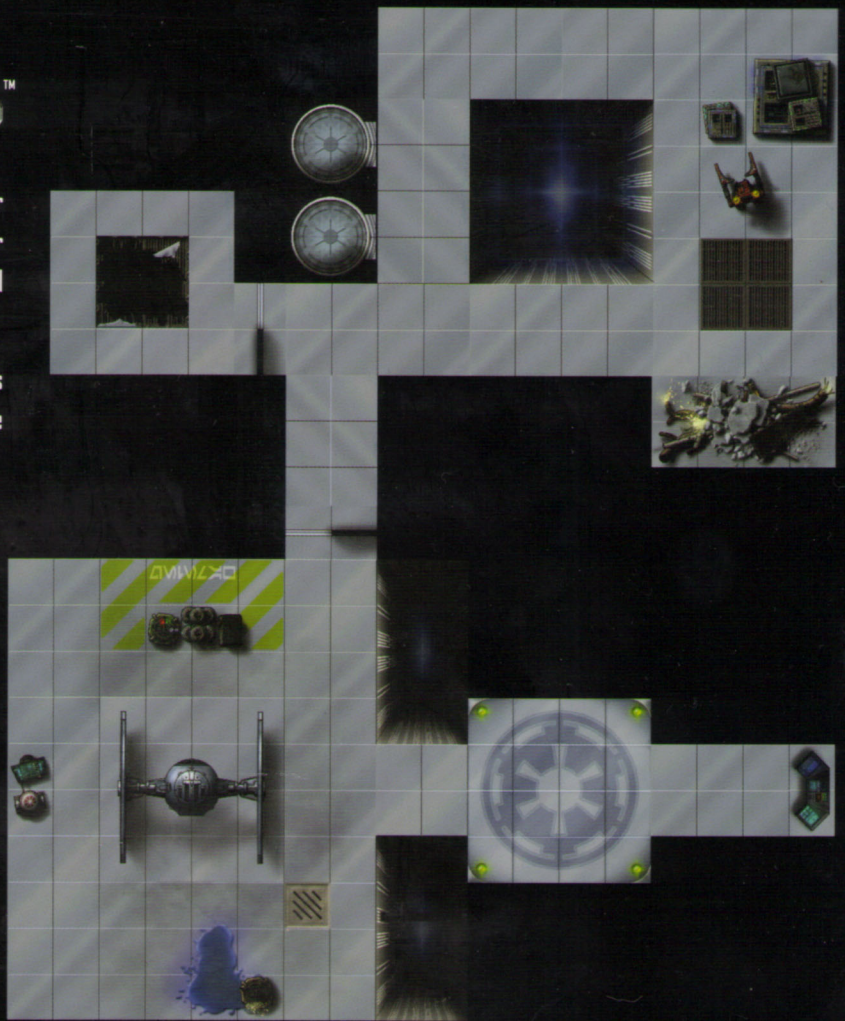


# GALAXY TILES™

The *Galaxy Tiles* accessory serves as a terrain-building aid for Gamemasters. Use this set to build exciting encounter locations for your *Star Wars® Roleplaying Game*, and expand your options with additional copies of this set or with future sets.

Here are just a few sample complexes you can make with the tiles in this set. For more configurations, check out the Wizards of the Coast website ([www.wizards.com/starwars](http://www.wizards.com/starwars)).

## Sample Complex 1



This Wizards of the Coast® game product contains no Open Game Content. No portion of this work may be reproduced in any form without written permission. To learn more about the Open Gaming License and the d20 System™ License, please visit [www.wizards.com/d20](http://www.wizards.com/d20).

**GALAXY TILES™ DESIGNER**  
Rodney Thompson

**ILLUSTRATOR**  
Christopher West

**PRODUCTION MANAGER**  
Bob Carrasca

**ART DIRECTOR**  
Paul Hebron

**DIRECTOR OF RPG R&D**  
Bill Slavicsek

**COVER DESIGNER**  
Soe Murayama



[www.wizards.com](http://www.wizards.com)

570-21510740-001-EN 9 8 7 6 5 4 3 2 1  
First Printing: December 2007

**U.S., CANADA,**

Asia, Pacific, & Latin America  
Wizards of the Coast, Inc.  
P.O. Box 707  
Renton, WA 98057-0707  
Questions? 1-800-324-6496

**EUROPEAN HEADQUARTERS**

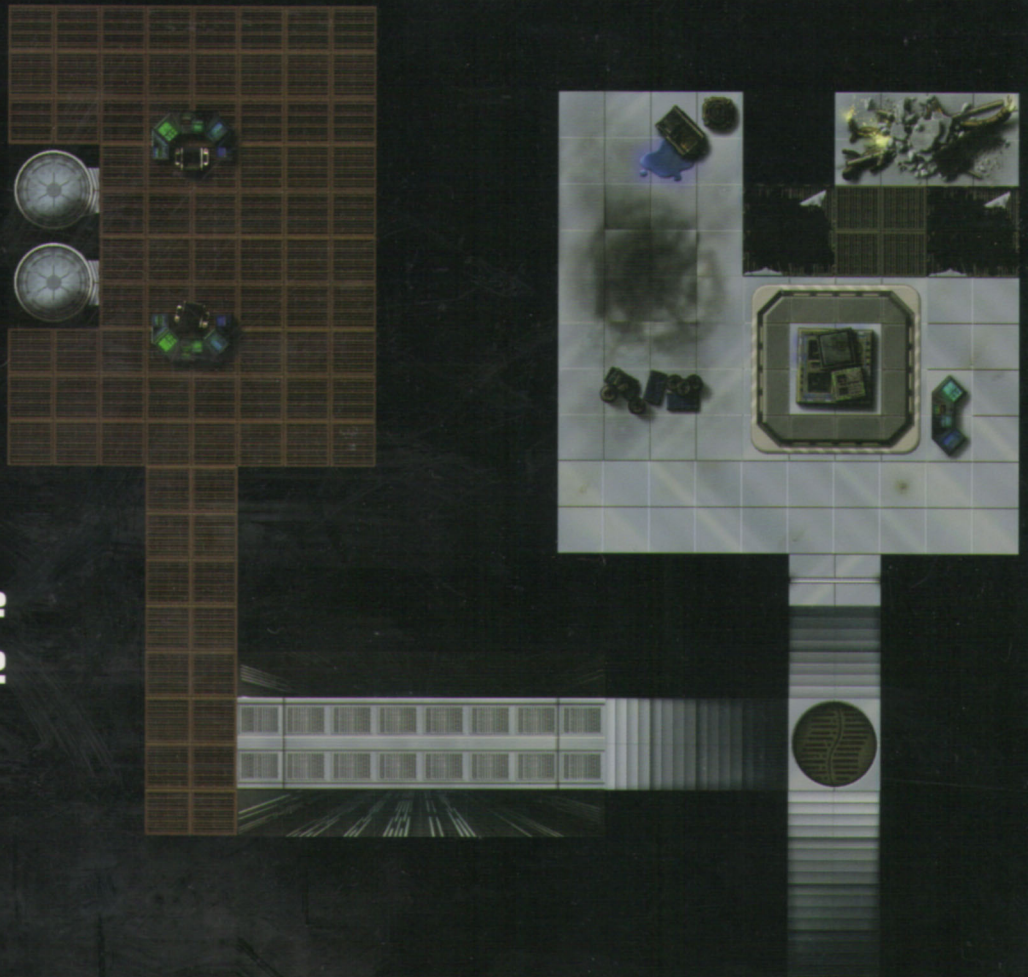
Hasbro UK Ltd  
Caswell Way  
Newport, Gwent NP9 0YH  
GREAT BRITAIN  
Please keep this address for your records

**WIZARDS OF THE COAST, BELGIUM**

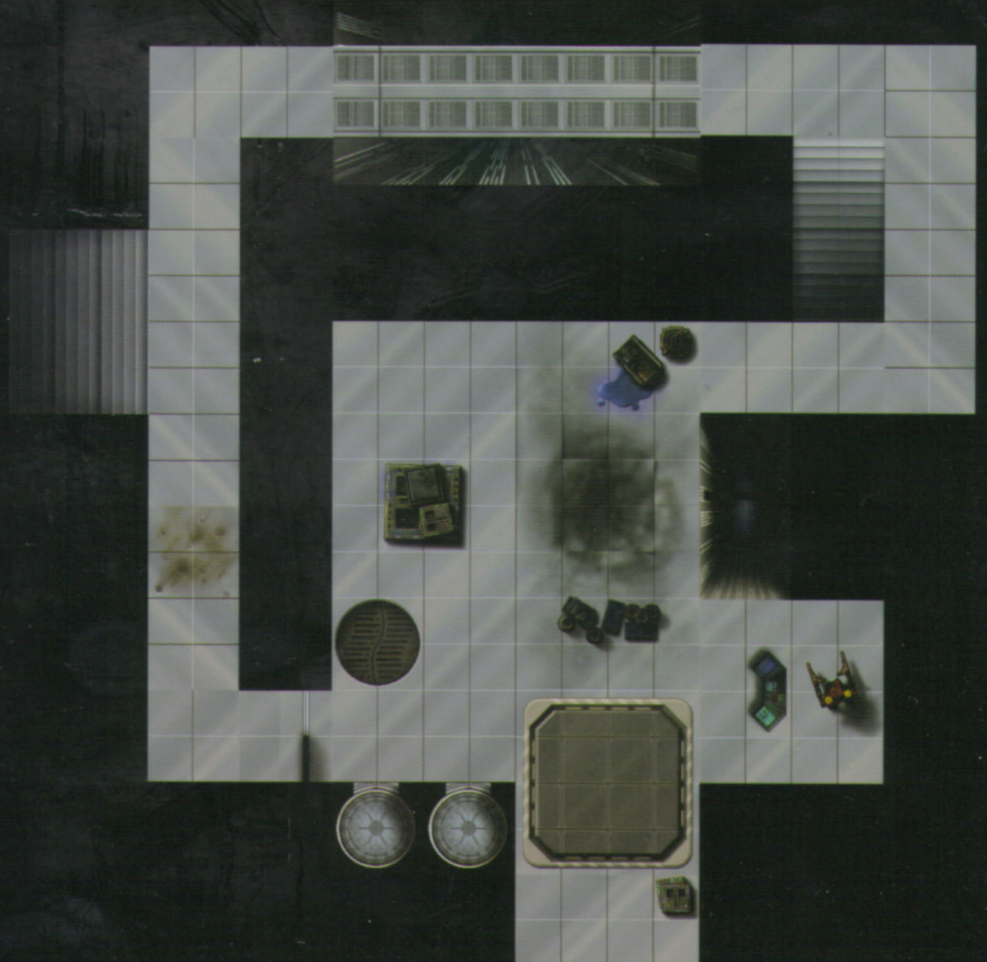
't Hofveld 60  
1702 Groot-Bijgaarden  
Belgium  
+32 2 467 3360

©2007 Lucasfilm Ltd. & TM. Wizards of the Coast, d20 system, and their respective logos are trademarks of Wizards of the Coast in the U.S.A. and other countries. This material is protected under the copyright laws of the United States of America. Any reproduction or unauthorized use of the material or artwork contained herein is prohibited without the express written permission of Wizards of the Coast, Inc. Made in CHINA. ©2007 Wizards of the Coast, Inc.

**Sample  
Complex 2**



**Sample  
Complex 3**



## BUILD YOUR OWN BASES AND BATTLESTATIONS

Your tabletop never looked better! Easy to set up and infinitely expandable, this pack of customizable terrain tiles allows you to create the epic *Star Wars* battles you want to play. Pick up additional packs to create larger, more elaborate installations!

This pack contains six durable, fully illustrated map grids, featuring rooms, corridors, and other terrain elements that you can use to make great *Star Wars*® *Roleplaying Game* encounters.

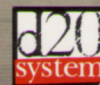


Product shown not to scale.

[www.wizards.com/starwars](http://www.wizards.com/starwars)  
[www.starwars.com](http://www.starwars.com)

For use with these *Star Wars* products: *Star Wars*® *Roleplaying Game*:  
*Saga Edition*, *Star Wars*™ Miniatures,  
Other *Galaxy Tiles*™ sets

© 2007 Lucasfilm Ltd. & TM. All rights reserved. ® denotes Reg. U.S. Pat. & TM Office. Published by Wizards of the Coast, Inc., PO Box 707, Renton, WA 98057-0707 U.S.A.  
Wizards of the Coast d20 System and their logos are property of Wizards of the Coast in the U.S.A. and other countries. MADE IN CHINA  
Please retain our company details for future reference. Importé au Canada par Wizards of the Coast, Inc., P.O. Box 707, Renton WA 98057-0707, U.S.A.  
C-267A



ISBN: 978-0-7869-4744-7



9 780786 947447

5 1295

Sug. Retail U.S. \$12.95 CAN \$16.00 215107400

EAN

72684