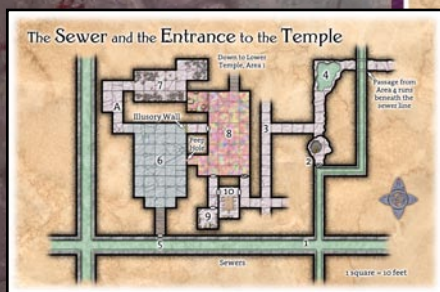


Ptolus

BONUS MAP PACK

Welcome to the **Ptolus Bonus Map Pack**. Inside you will find 25 maps originally appearing in the adventures from *Ptolus: Monte Cook's City by the Spire* and *Ptolus: The Night of Dissolution*. Each map is presented as a full page image for easy reference and includes the original labeled version and a version with most of the labels removed. Only title, scale, and compass have been left on the unlabeled maps. Each map references the chapter and page number where it originally appeared so you can find the information you need quickly during game play.



PTOLUS

BONUS MAP PACK

Cartography and design

ED BOURELLE

Ptolus logo and cover pattern illustration

TODD LOCKWOOD

Ptolus created by

MONTE COOK

Editorial assistance

SUE WEINLEIN COOK

For more material on the City by the Spire visit

WWW.PTOLUS.COM

Look for FREE miniatures scale map tiles at

WWW.SKELETONKEYGAMES.COM



Page Orientation:

- To optimize printing and get the largest version of each map on a page, some maps have been rotated. To view the maps in their proper orientation, click the View drop-down menu, select Rotate View, and Clockwise. Select Counterclockwise to return to the original page layout.

Bookmarks:

- The Ptolus Bonus Map Pack is bookmarked according to the Ptolus chapter in which it originally appears.
- Each map in this PDF has a page number for easy reference back to its original source.

Printing:

- The Ptolus Bonus Map Pack is designed to be printed on your home printer.
- Print all the maps or only the maps you need - it is completely up to you.
- Each map is offered on its own page so you can be selective and print only what you need.

Ptolus Bonus Map Pack ©2006 Edward Bourelle. All illustration and cartography is ©2006 Monte J. Cook and is used under license. **Ptolus** is a trademark owned by Monte J. Cook and is used here under license from Malhavoc Press. All rights reserved. **SkeletonKey Games** is a trademark owned by Edward Bourelle. All rights reserved. The reproduction or retransmission of any part of this product, without written permission of the copyright holder is expressly forbidden, except for the purpose of reviews. Permission is granted to print this material for personal use only.

Product Code: SKGPBMP01

Rosegate House

Ground Floor



1 square = 5 feet

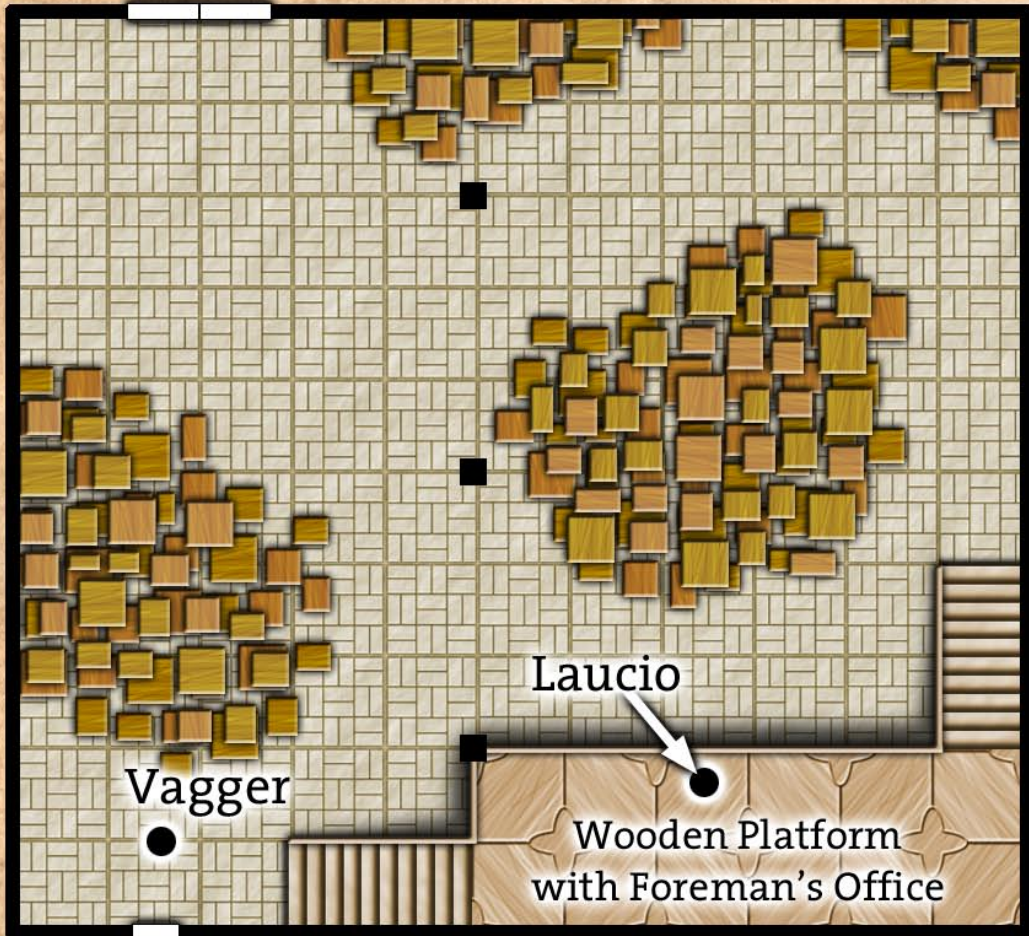
Nobles' Quarter



Second Floor

The Red Warehouse

Main Door



South Door

1 square = 5 feet



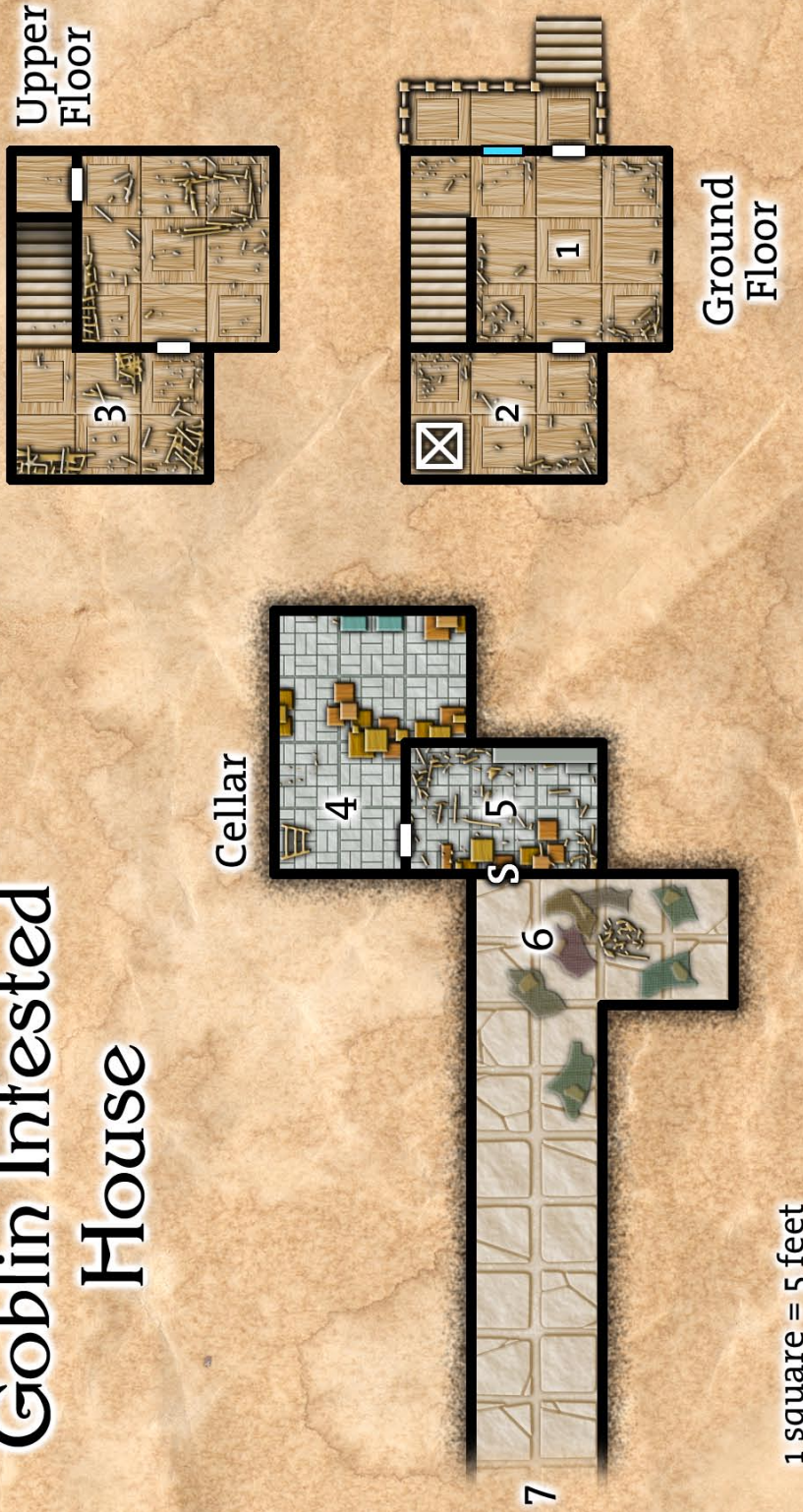
Toridan Cran's House



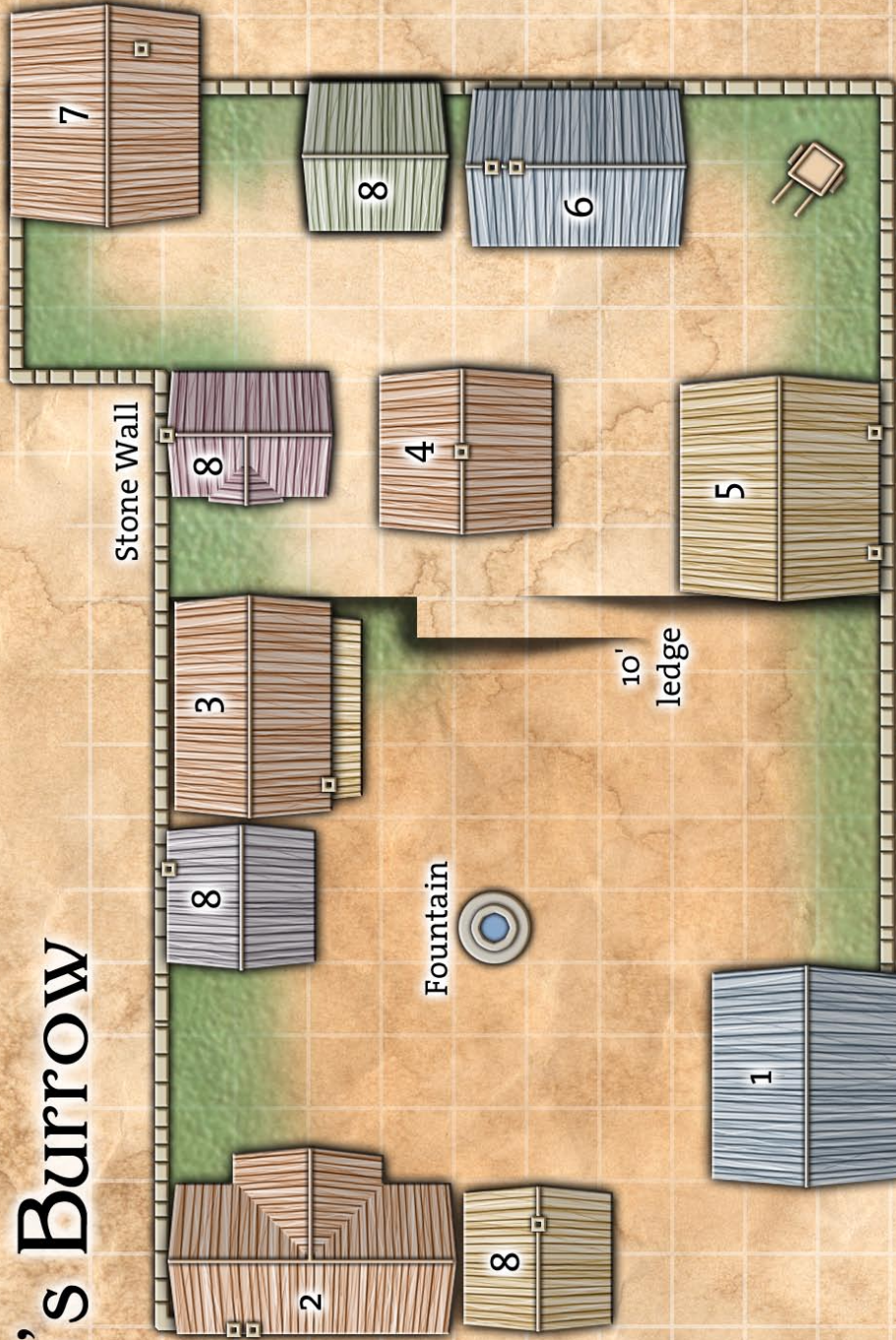
1 square = 5 feet



Goblin Infested House



Linech's Burrow



1 square = 10 feet

The Arrowhead



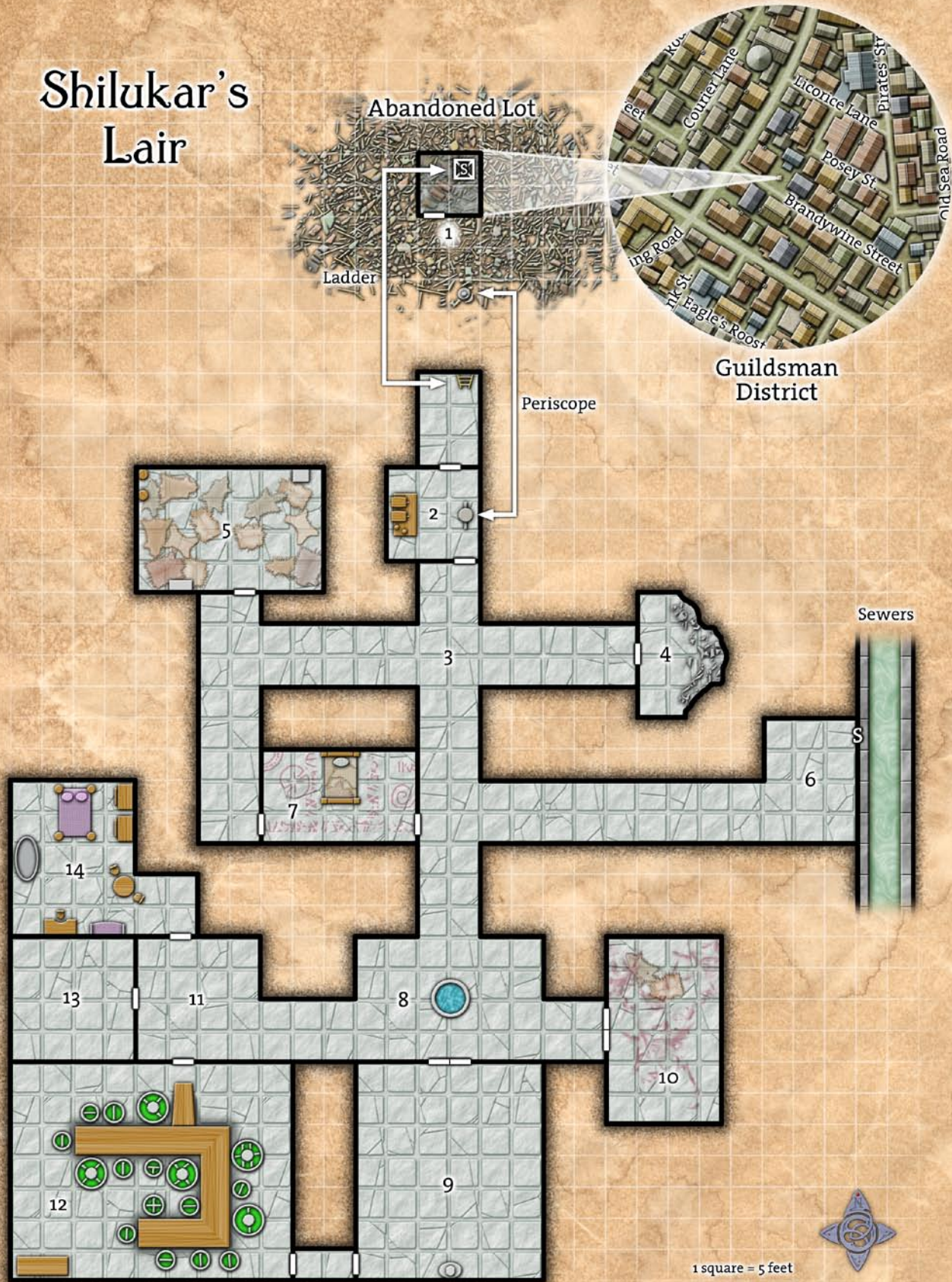
1 square = 5 feet

● = Sahuagin

● = Shark

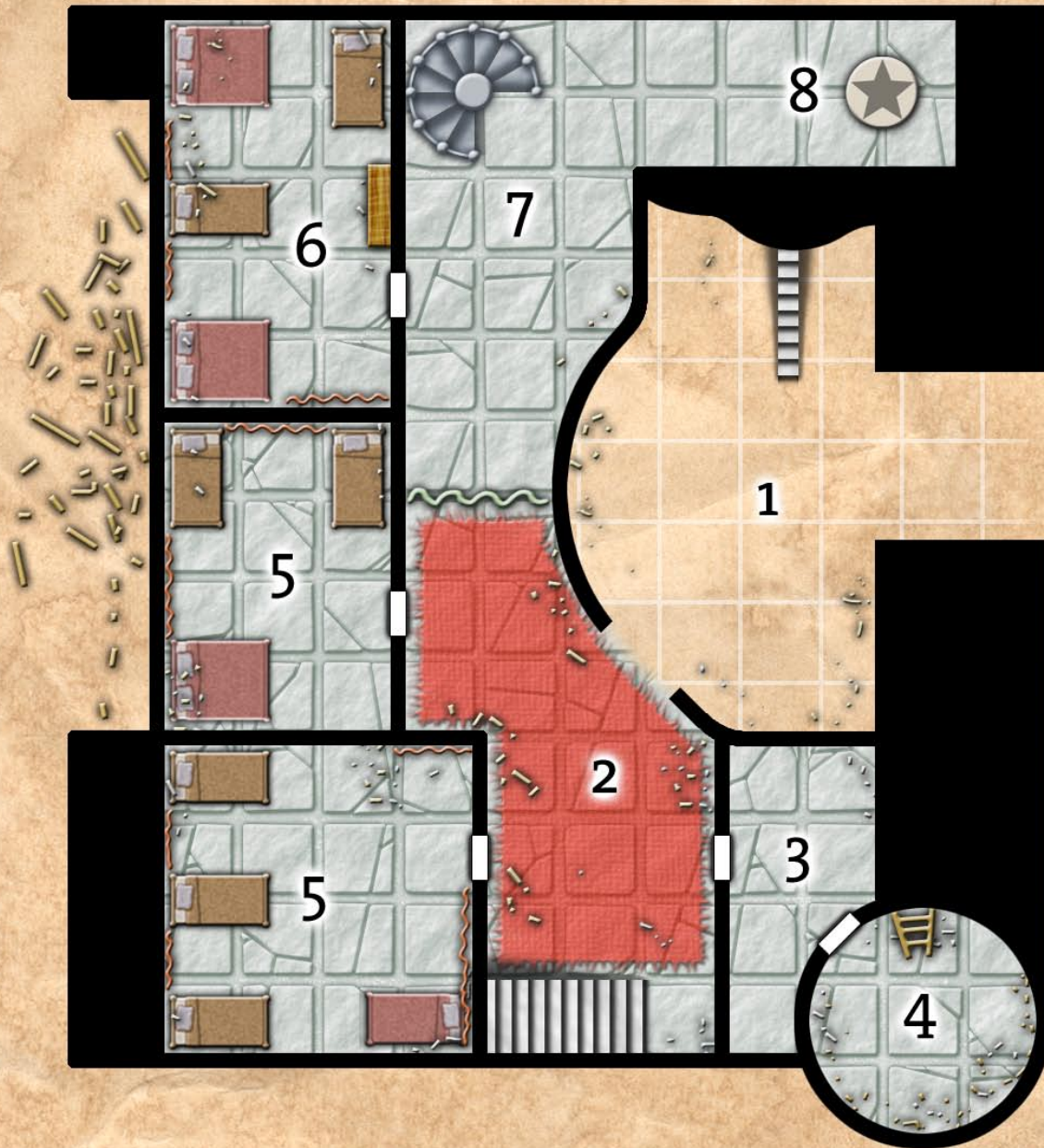


Shilukar's Lair



Pythoness House

Level 1

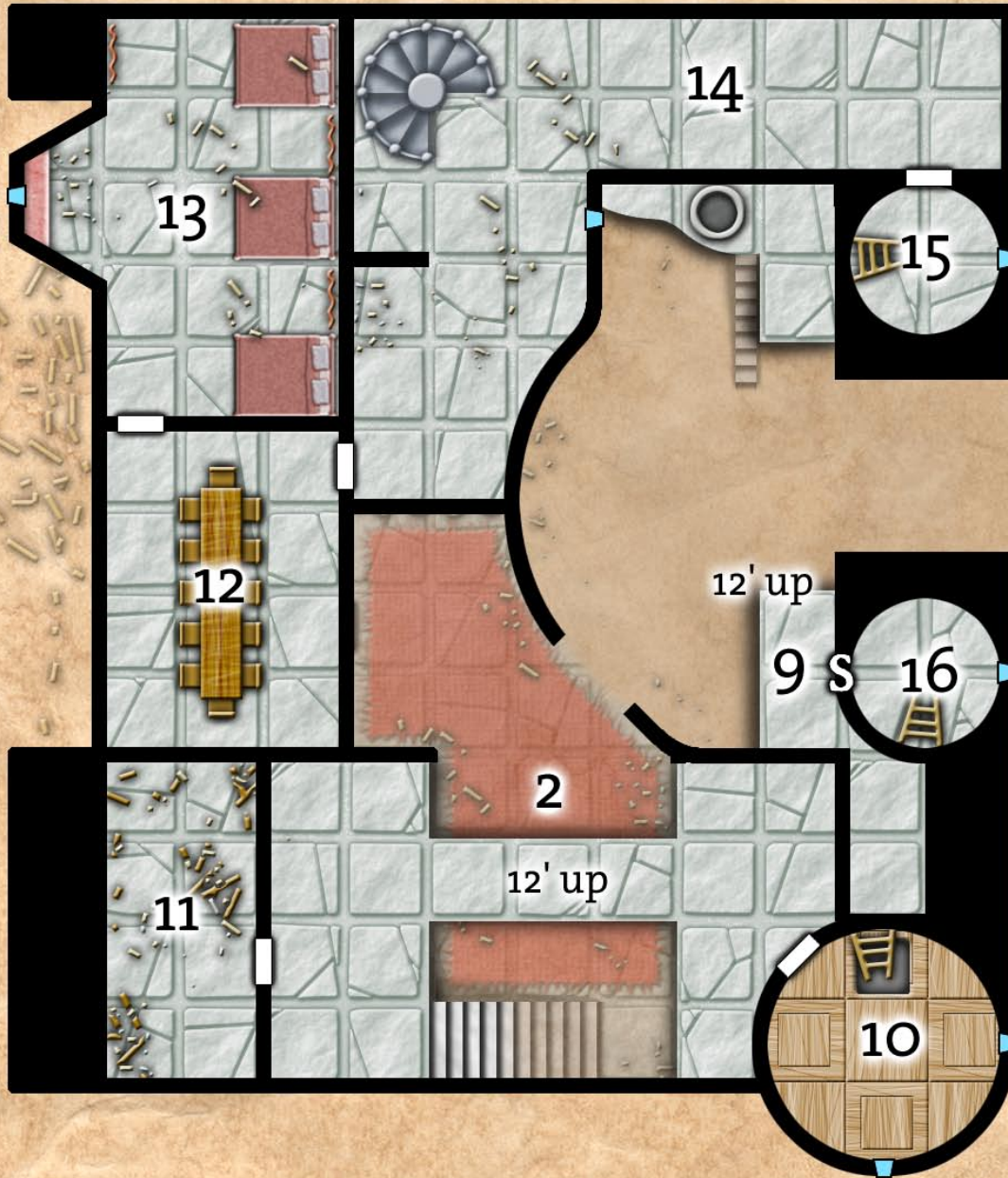


1 square = 5 feet



Pythoness House

Level 2

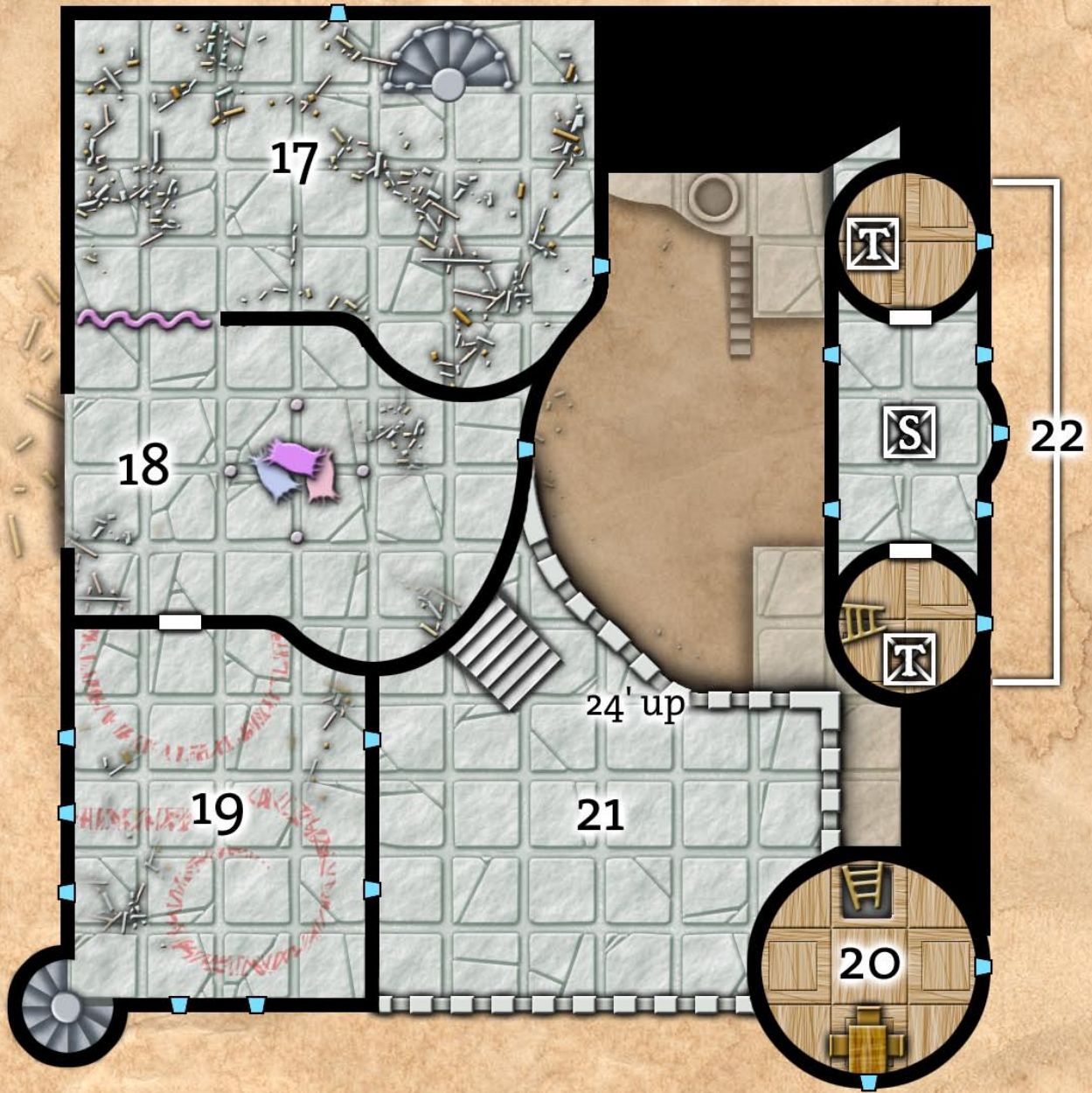


1 square = 5 feet



Pythoness House

Level 3

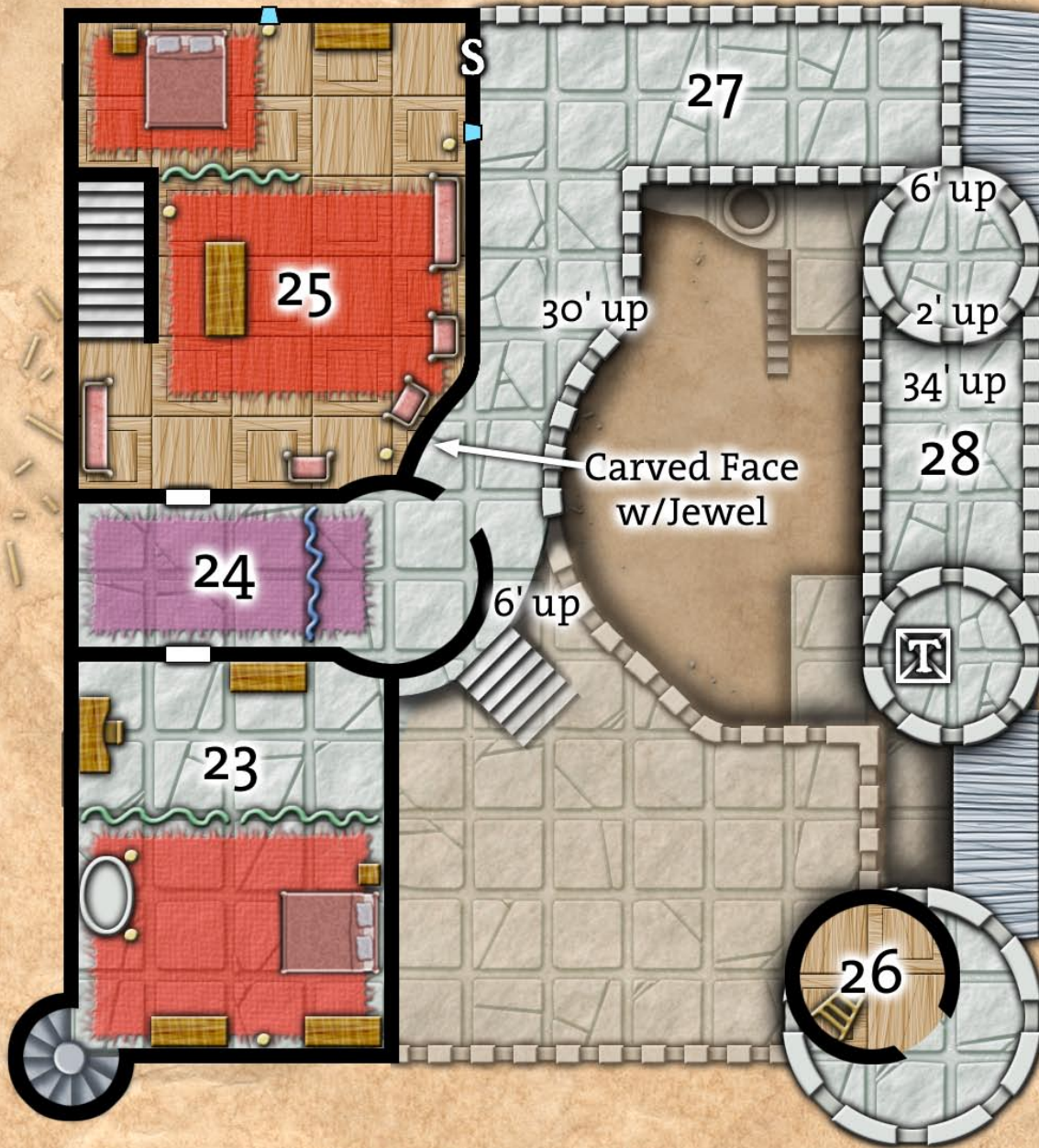


1 square = 5 feet



Pythoness House

Level 4

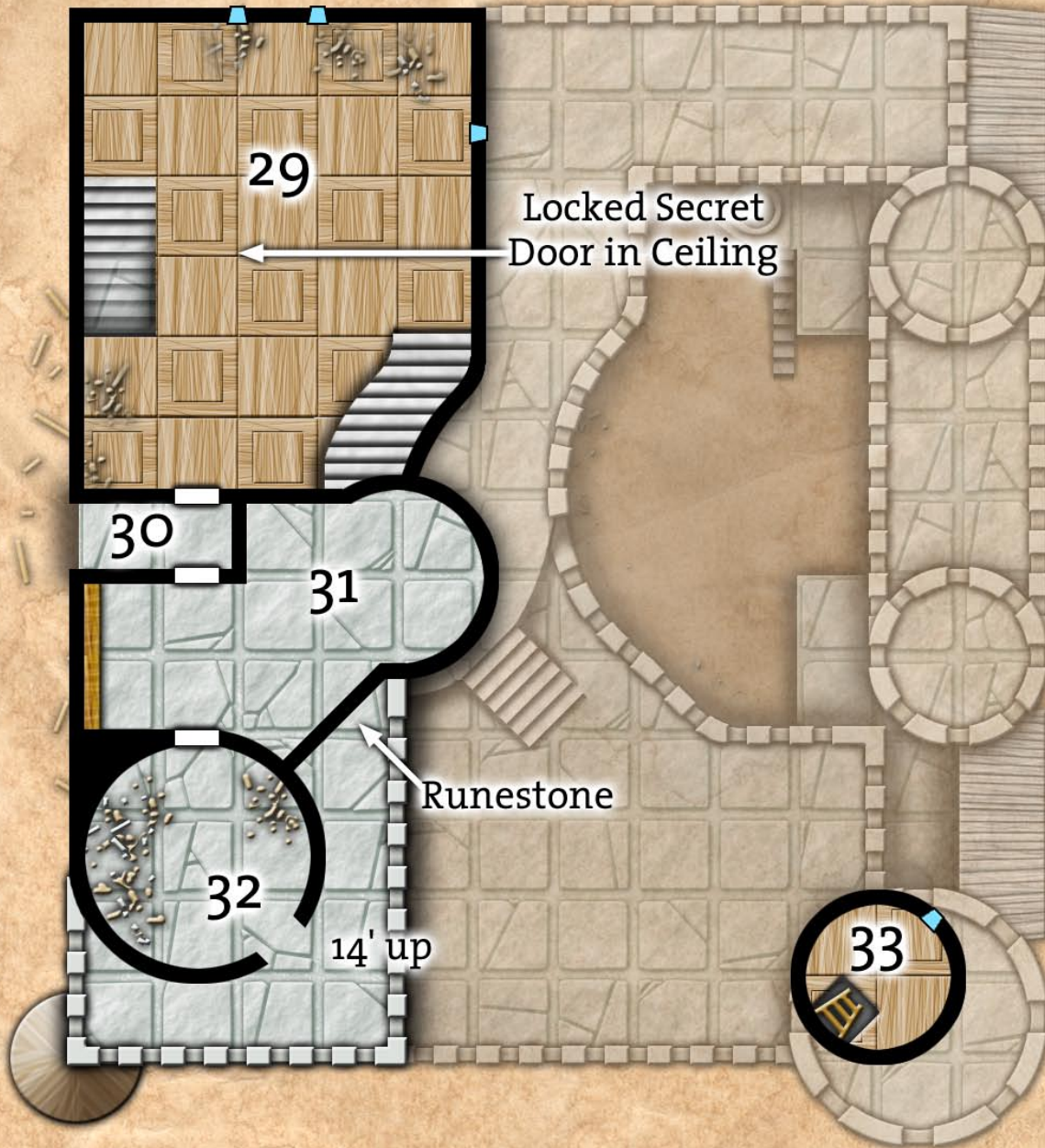


1 square = 5 feet



Pythoness House

Level 5

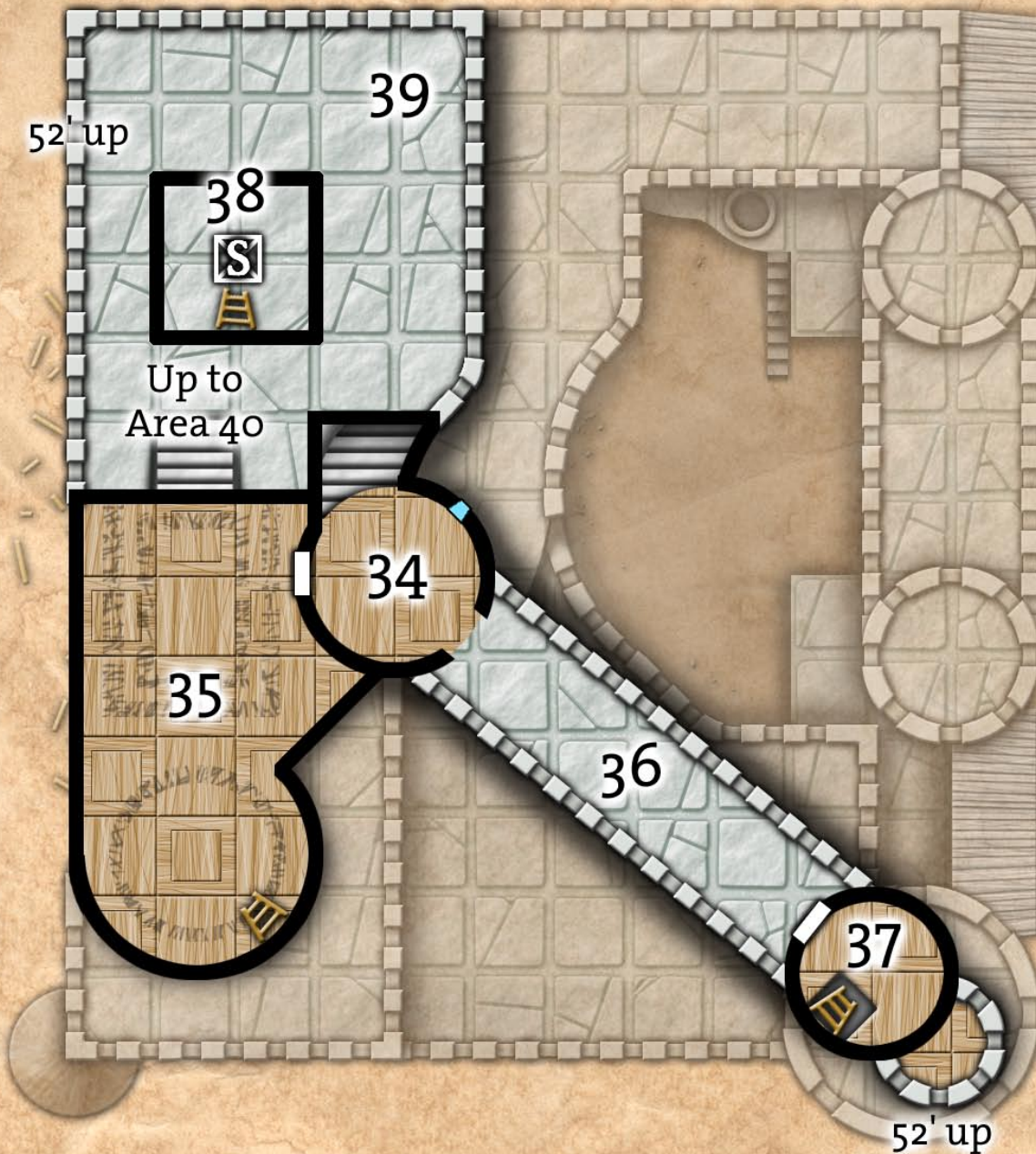


1 square = 5 feet



Pythoness House

Level 6

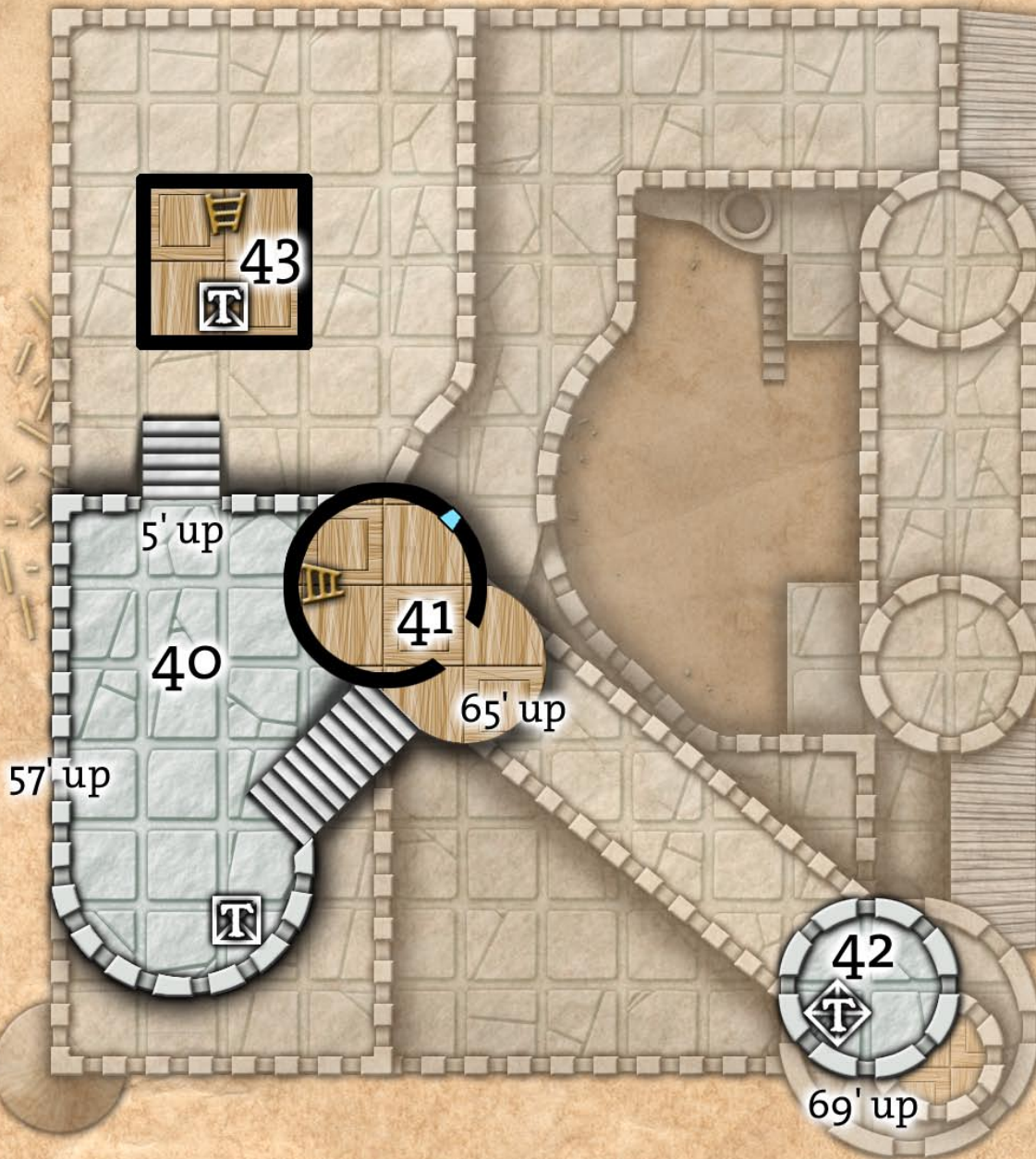


1 square = 5 feet



Pythoness House

Level 7

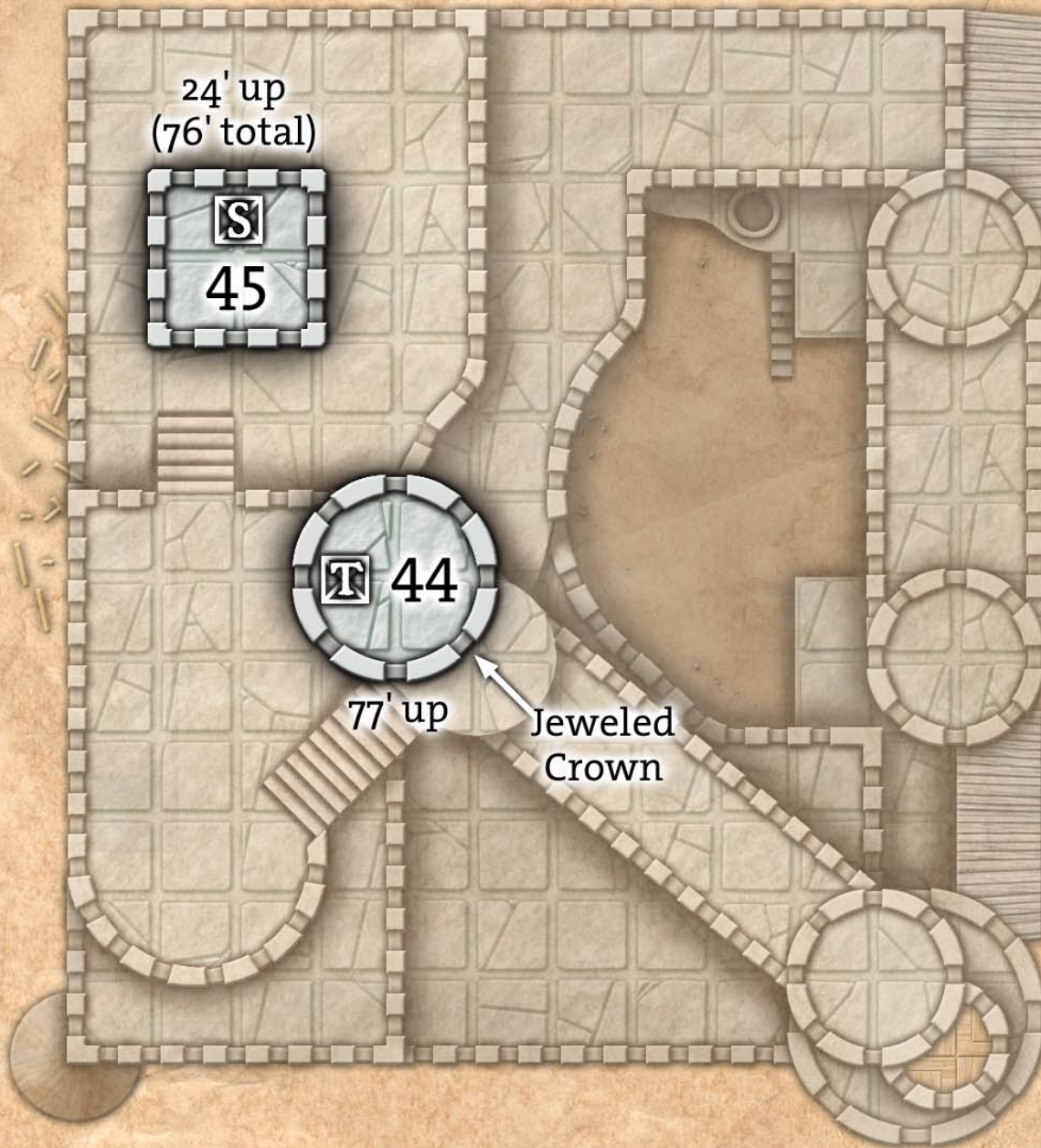


1 square = 5 feet



Pythoness House

Level 8

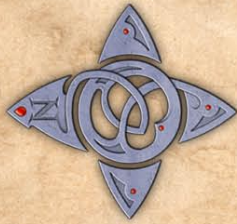


1 square = 5 feet

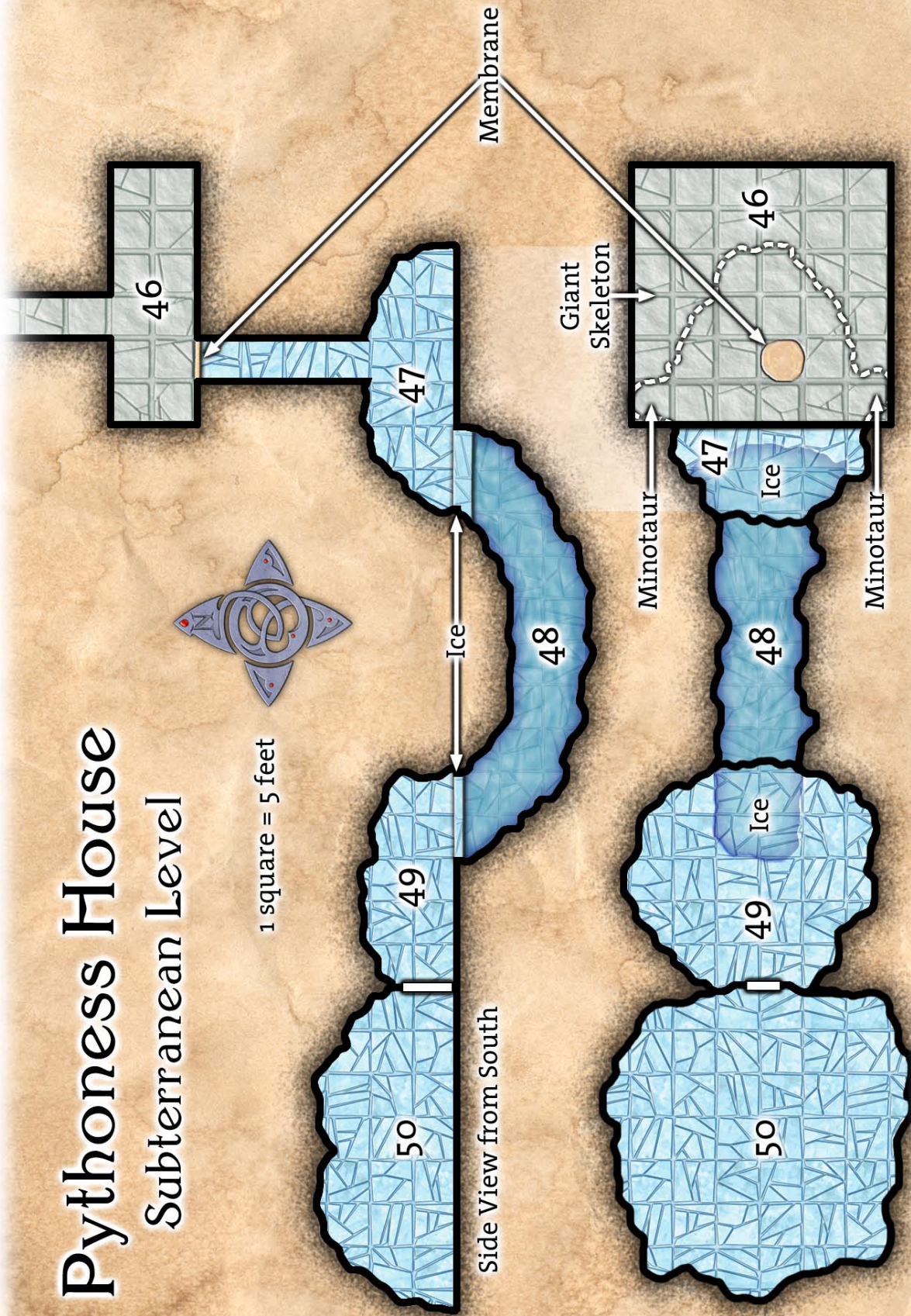


Pythoness House

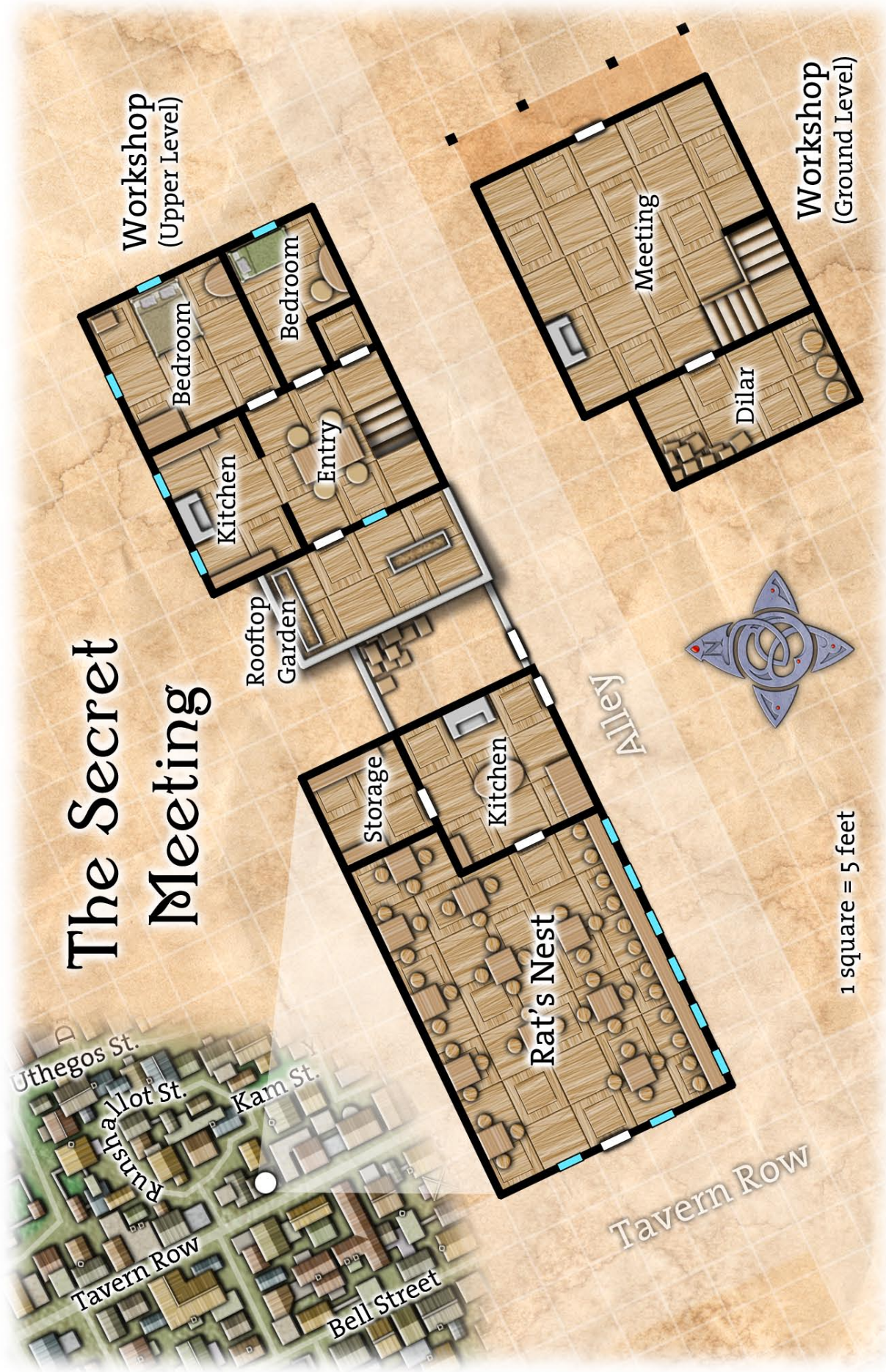
Subterranean Level



1 square = 5 feet



The Secret Meeting



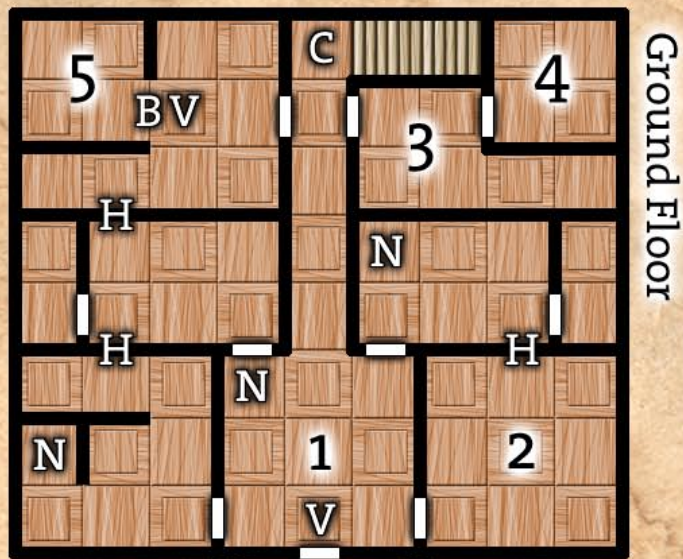
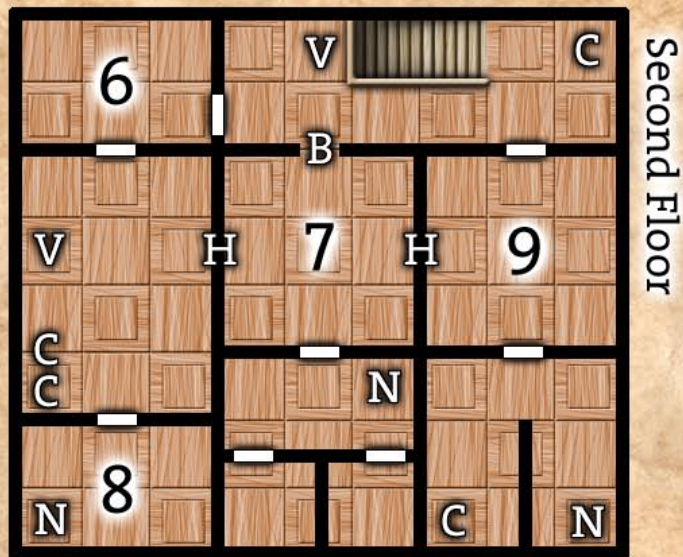
Kinion Luth's Lair

1 square = 5 feet



Master Allam's
School of Thought

The Apartment House

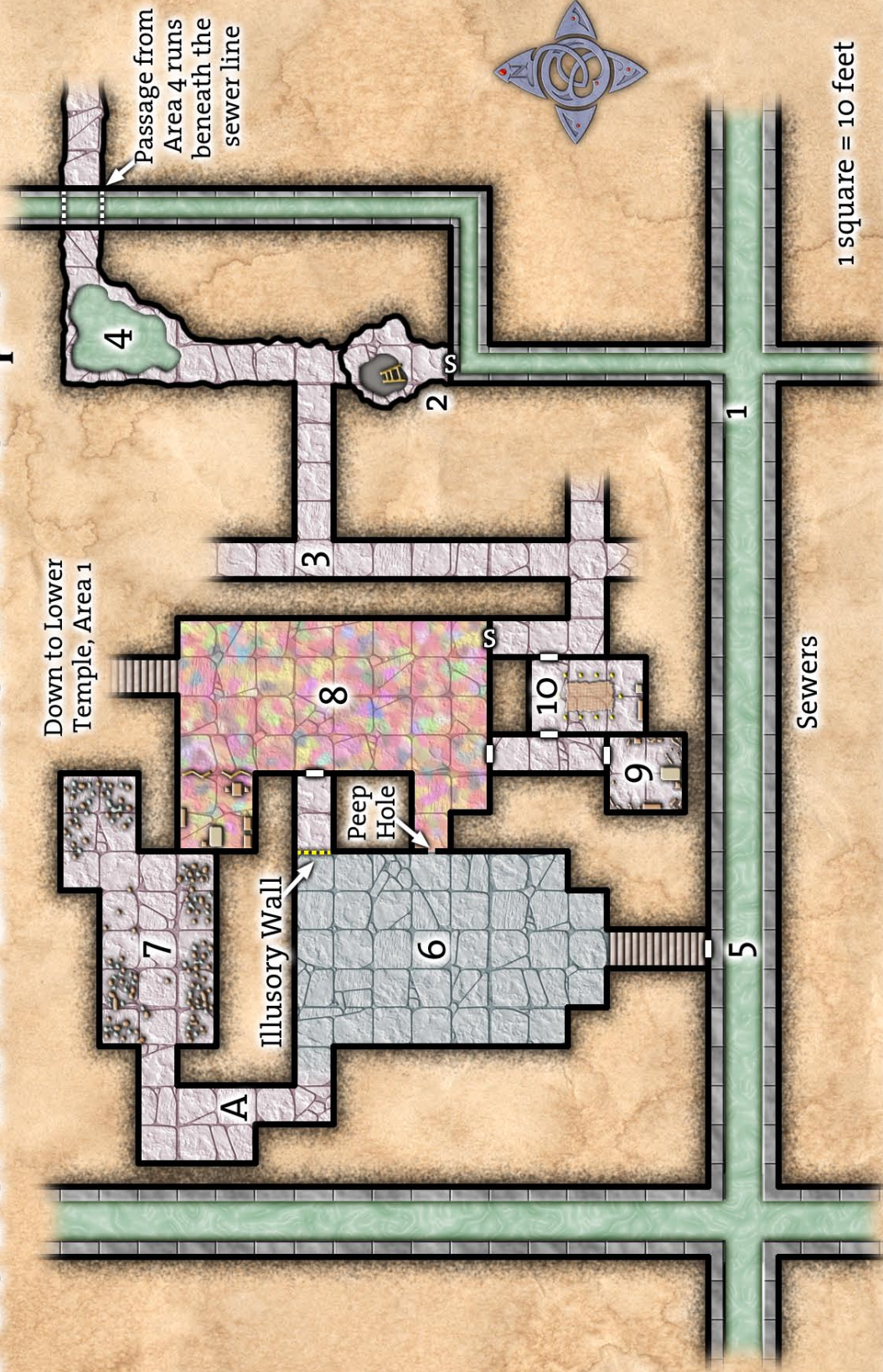


- B** = Broken Down Door
- C** = Cocoon
- H** = Hole in the Wall
- N** = Nest
- V** = Violet Slime



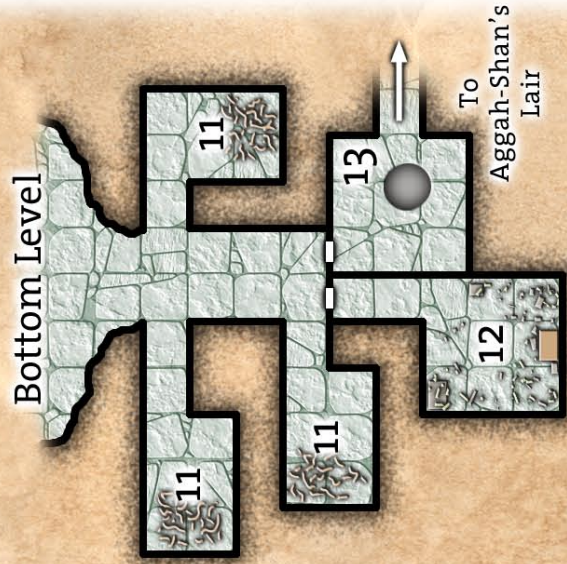
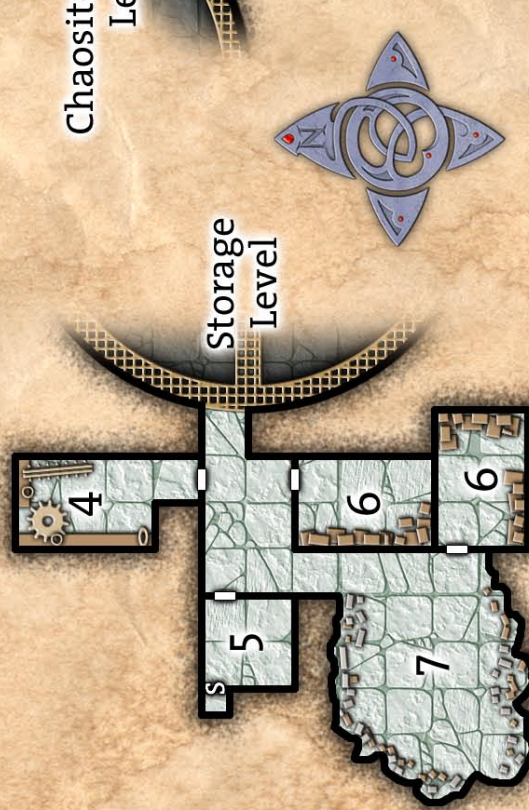
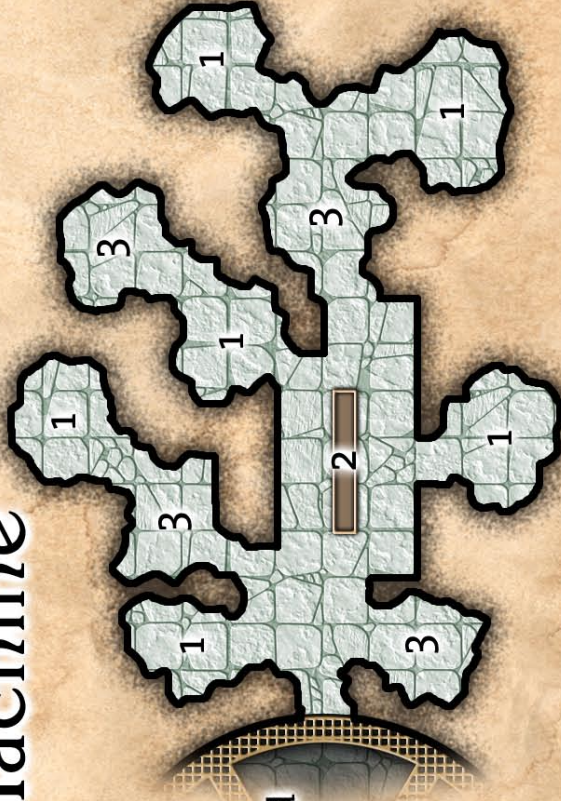
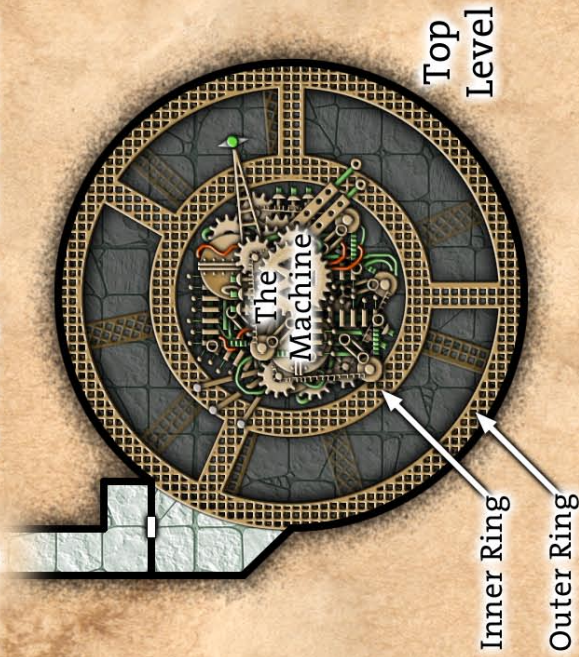
1 square = 10 feet

The Sewer and the Entrance to the Temple

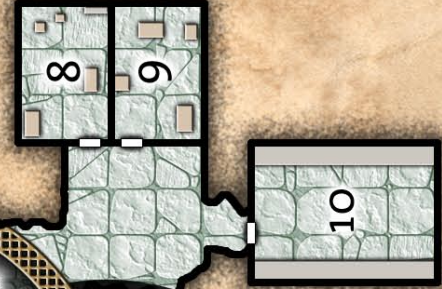


The Mrathrach Machine

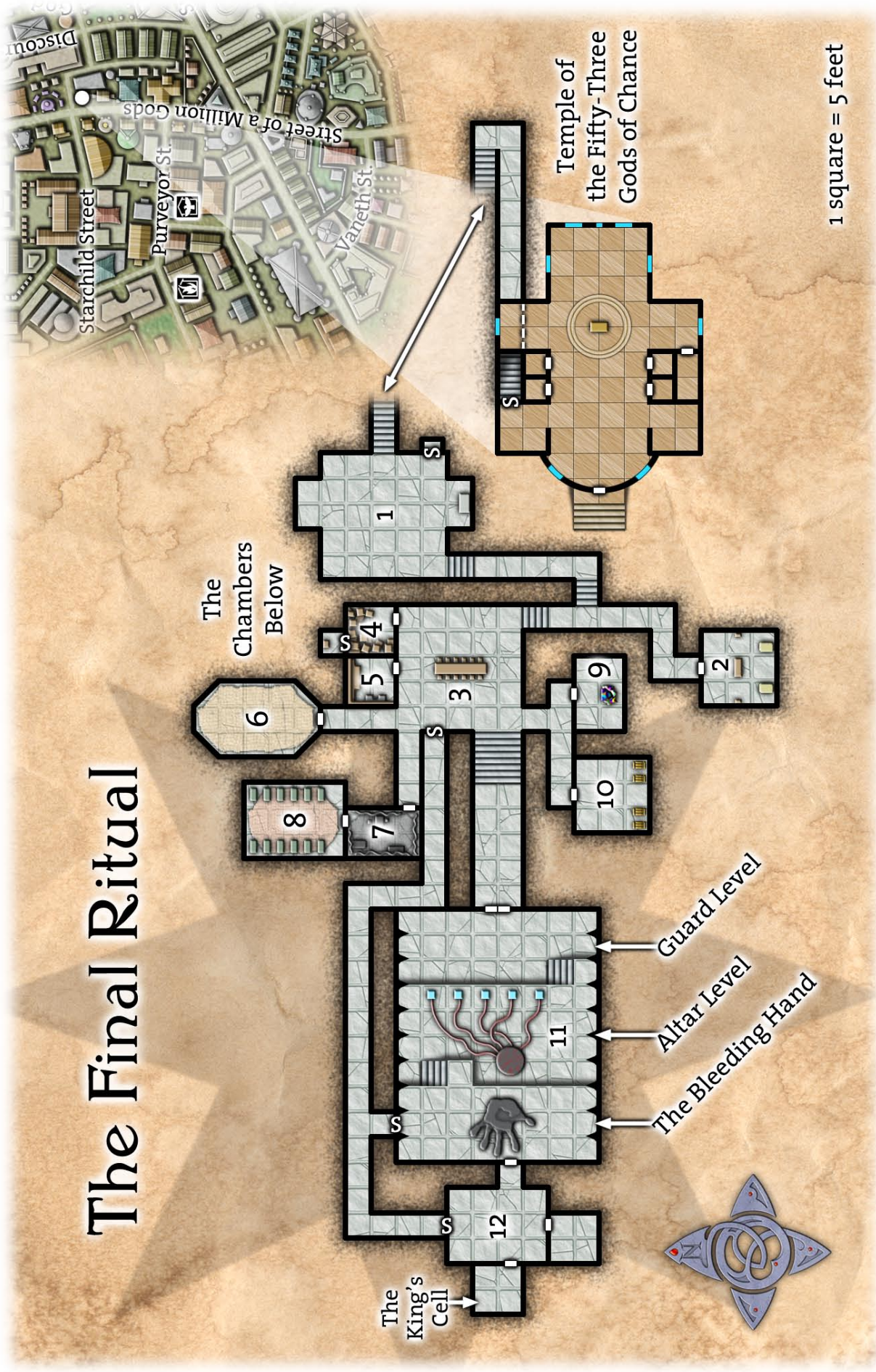
The Long Passage

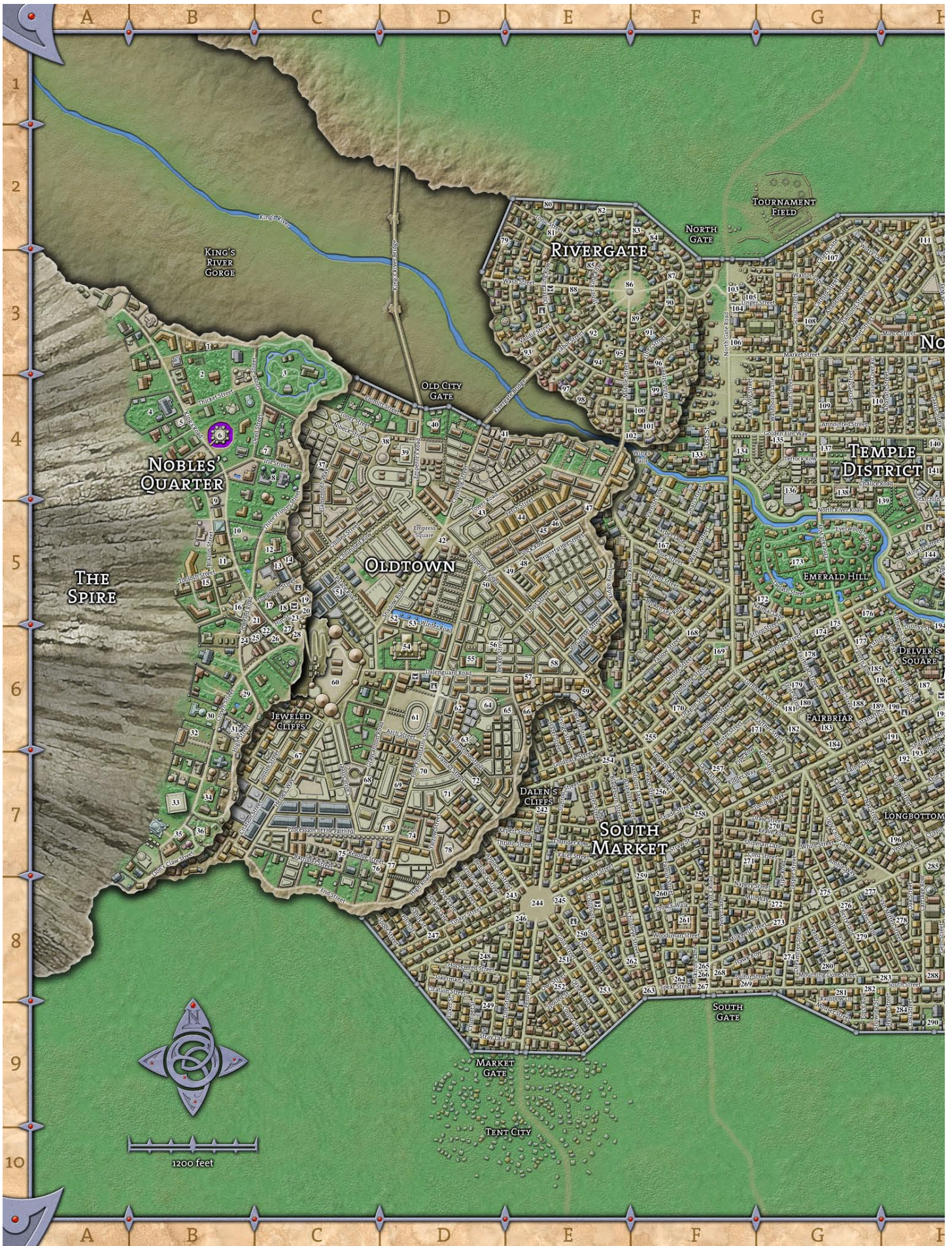


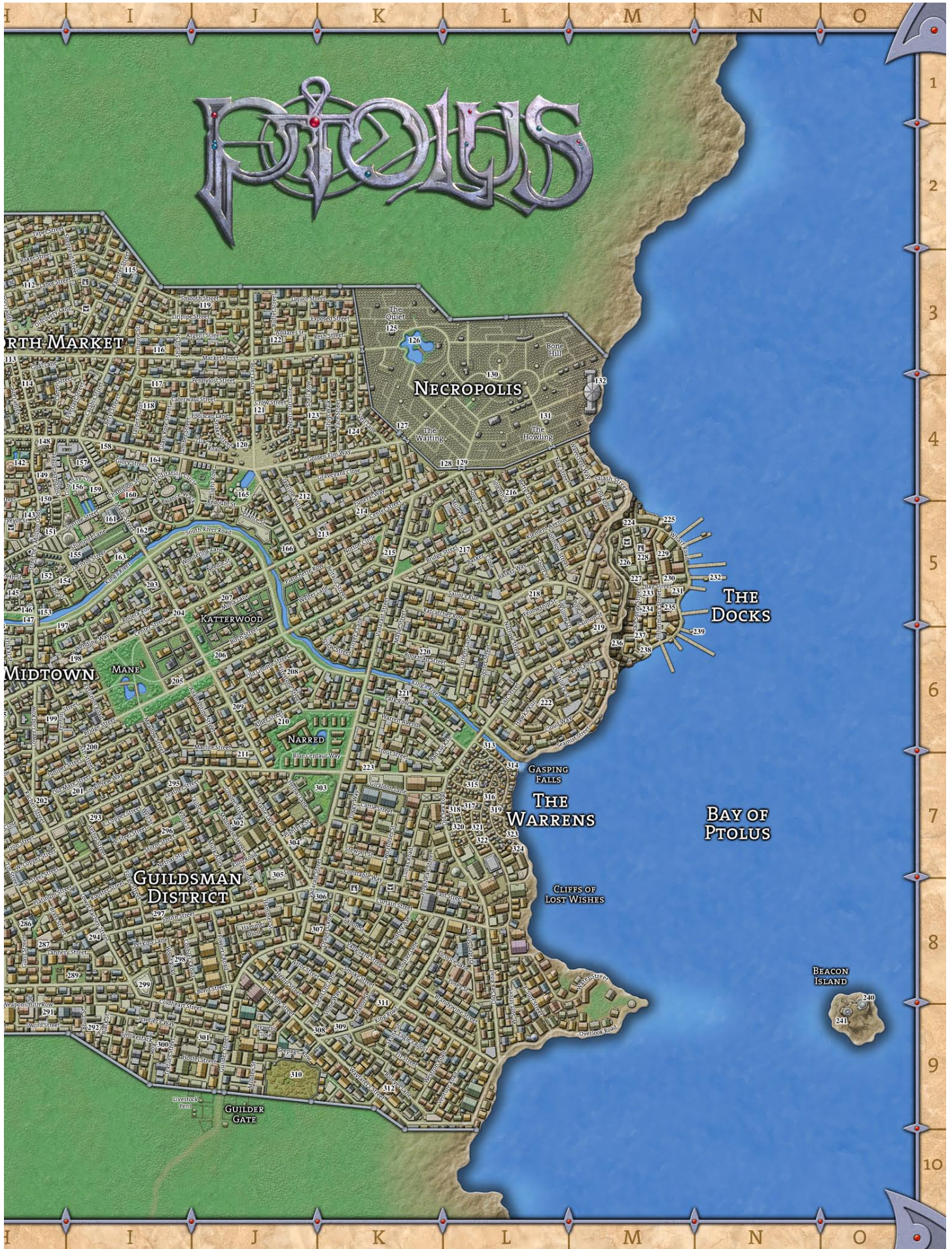
Chaositechnician Level



The Final Ritual







Rosegate House



1 square = 5 feet



The Red Warehouse



1 square = 5 feet



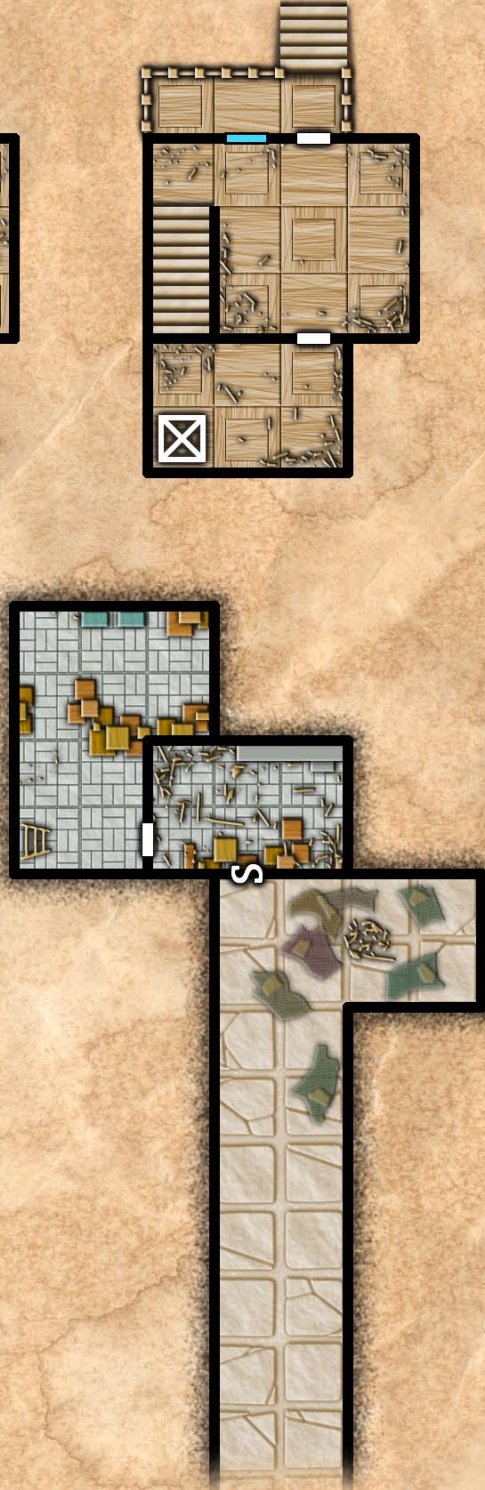
Toridan Cran's House



1 square = 5 feet

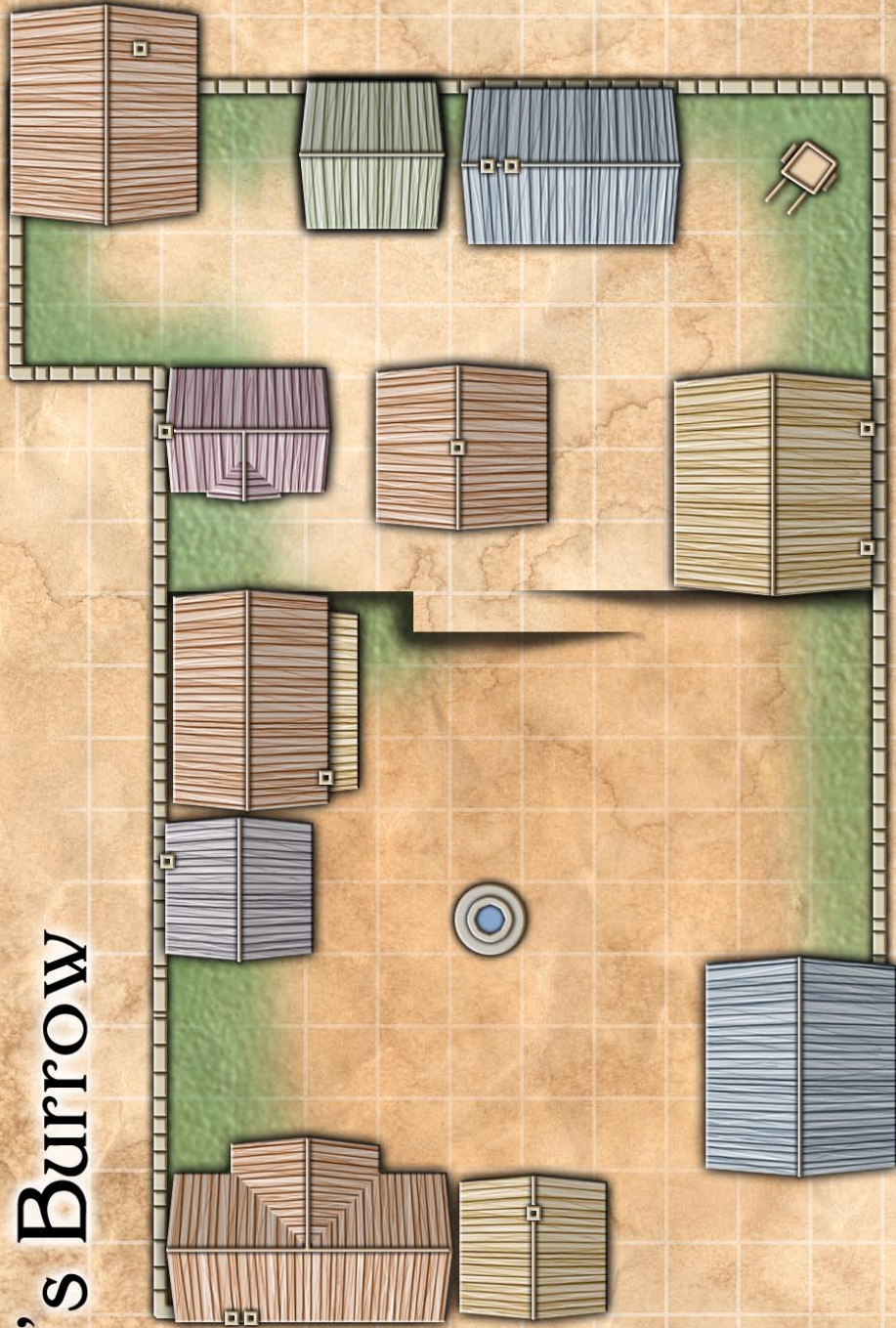


Goblin Infested House



1 square = 5 feet

Linech's Burrow



1 square = 10 feet

The Arrowhead



1 square = 5 feet

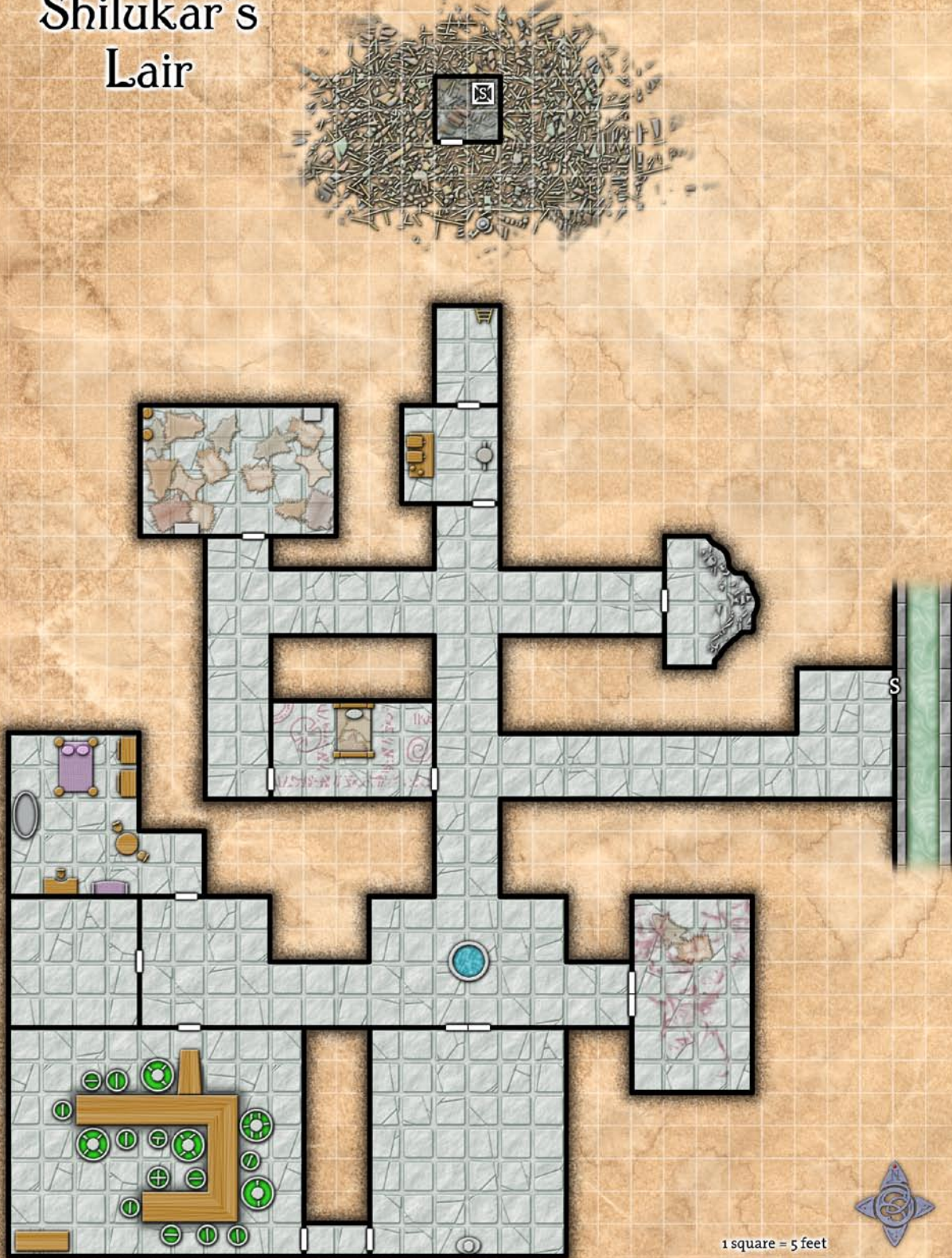
The Underwater Caves



1 square = 5 feet

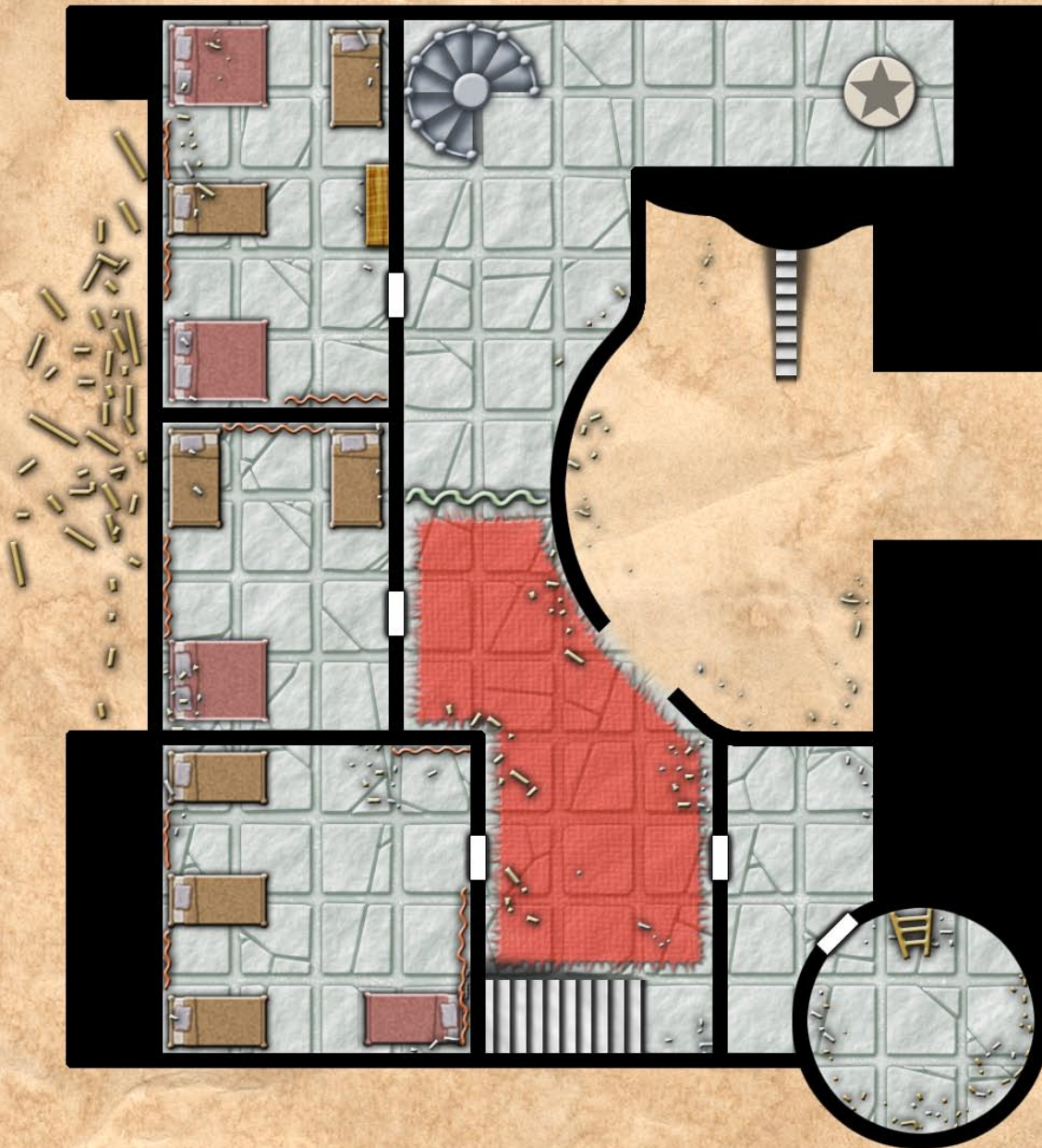


Shilukar's Lair



Pythoness House

Level 1

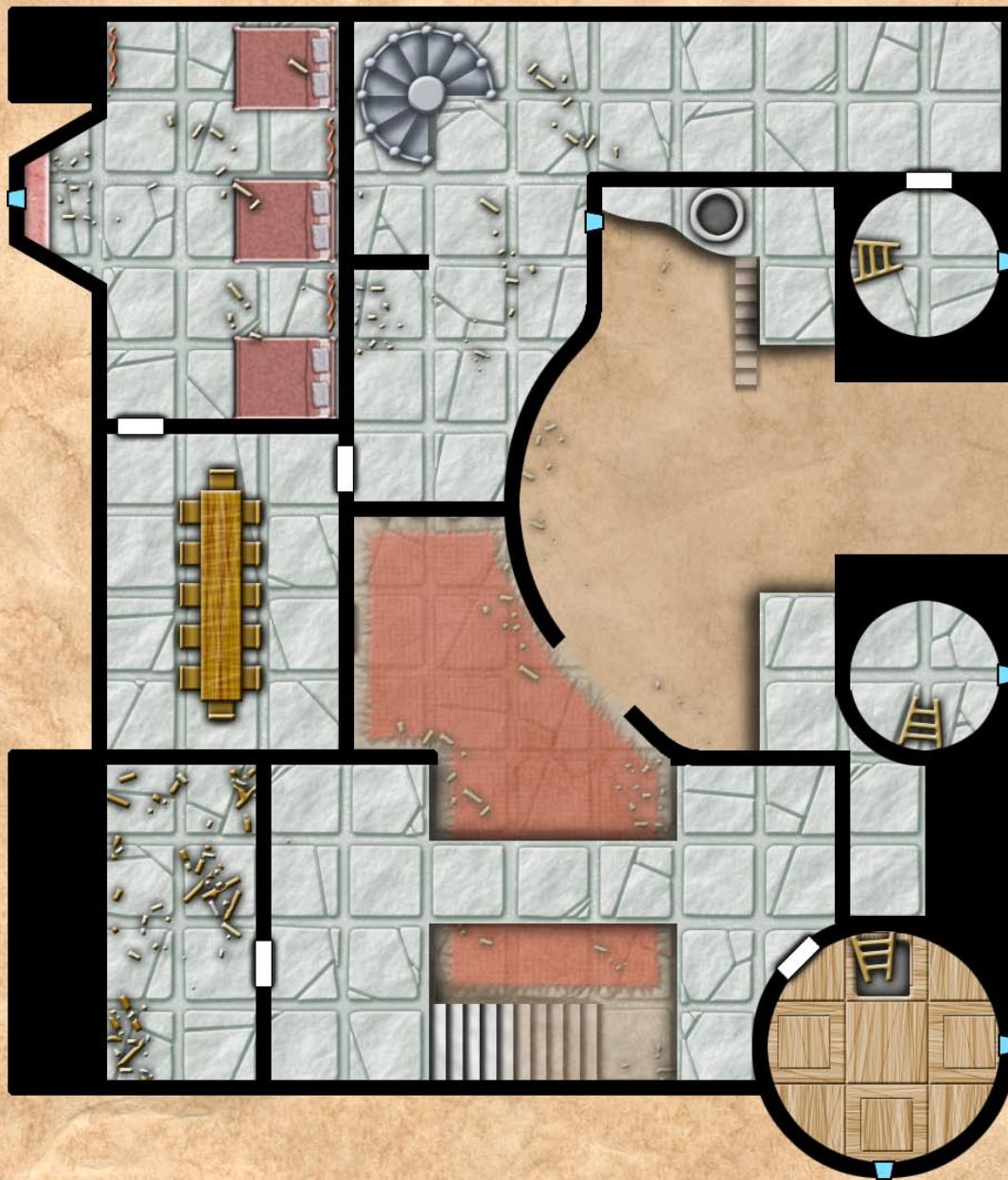


1 square = 5 feet



Pythoness House

Level 2

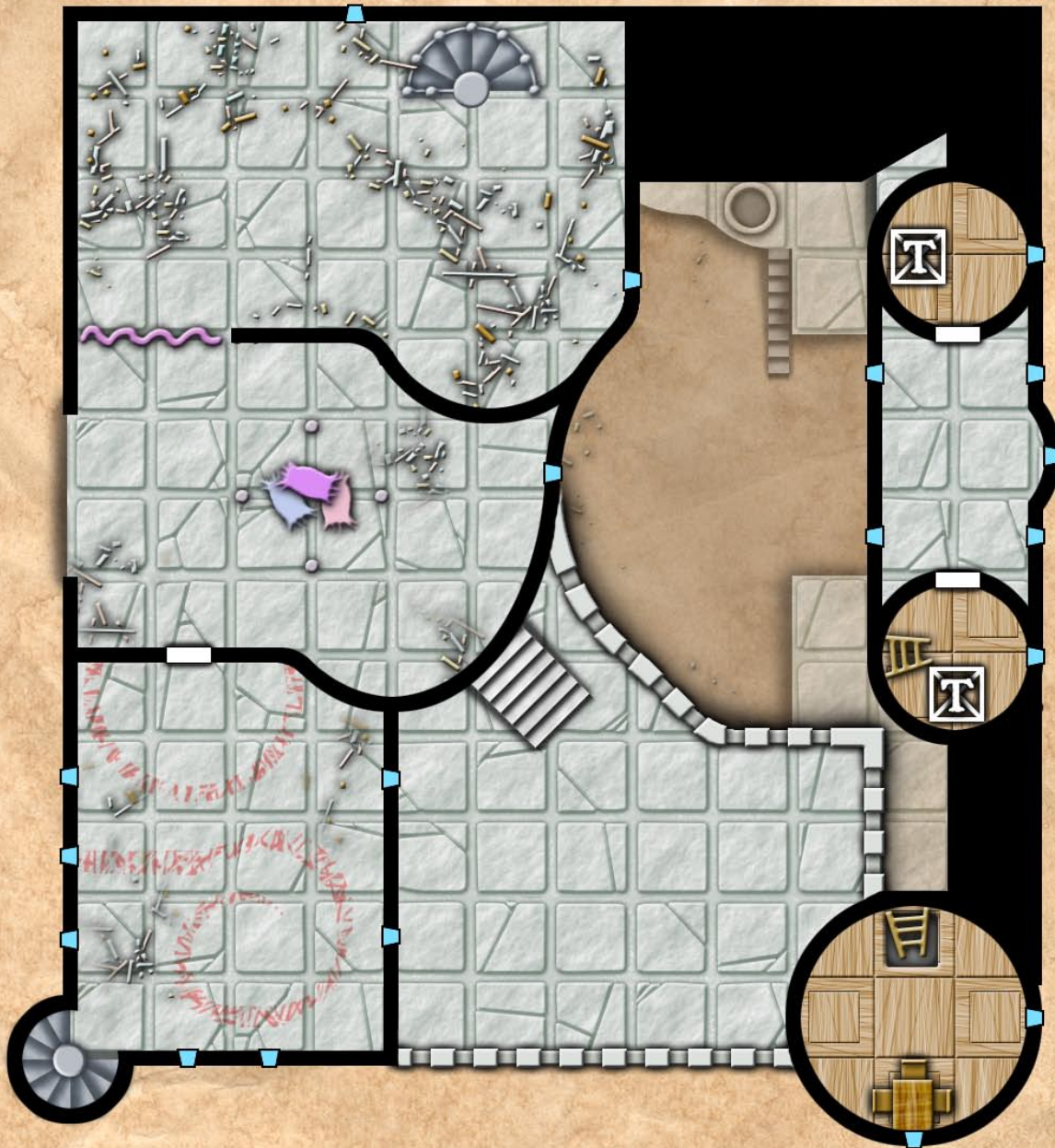


1 square = 5 feet



Pythoness House

Level 3

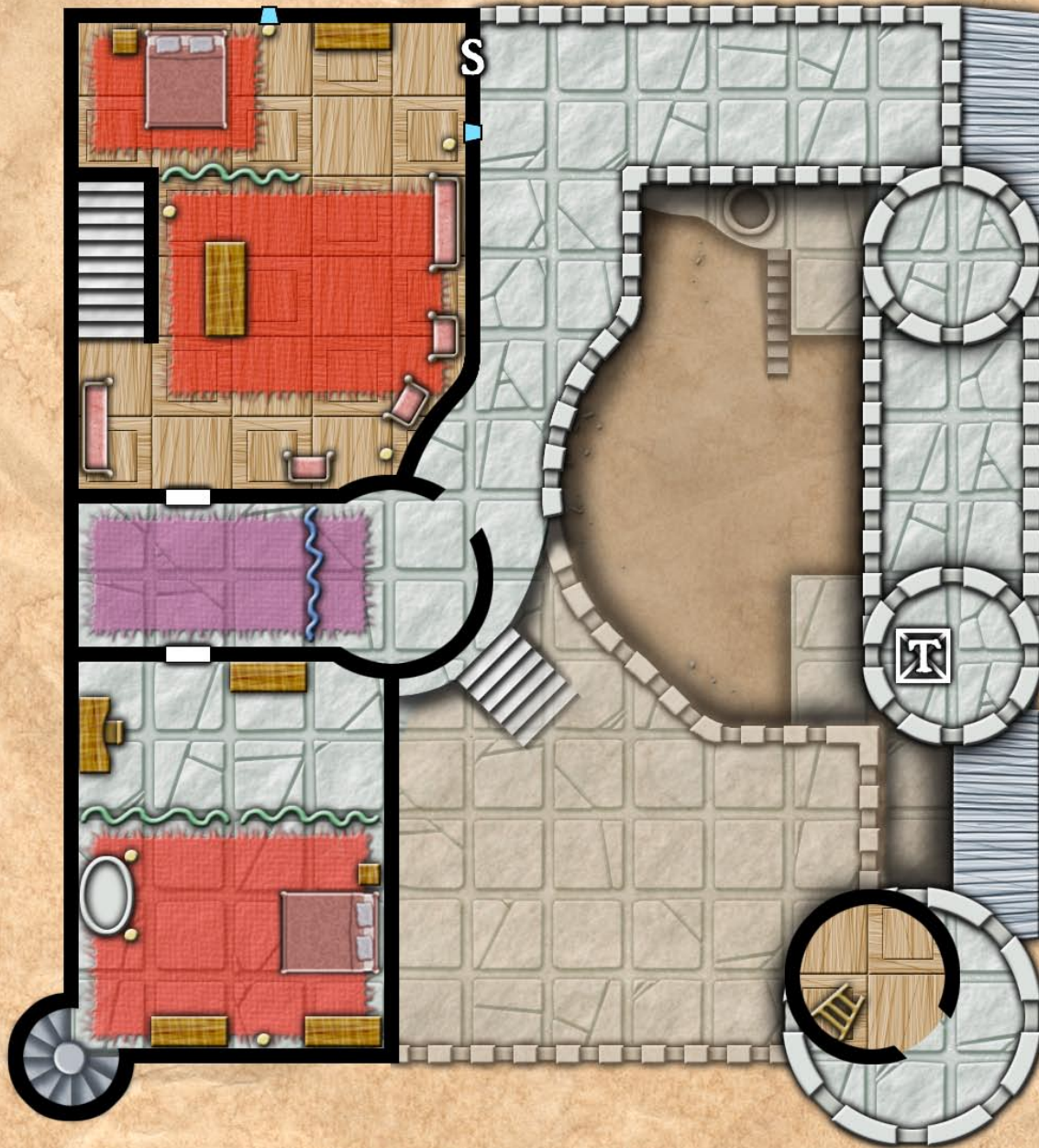


1 square = 5 feet



Pythoness House

Level 4

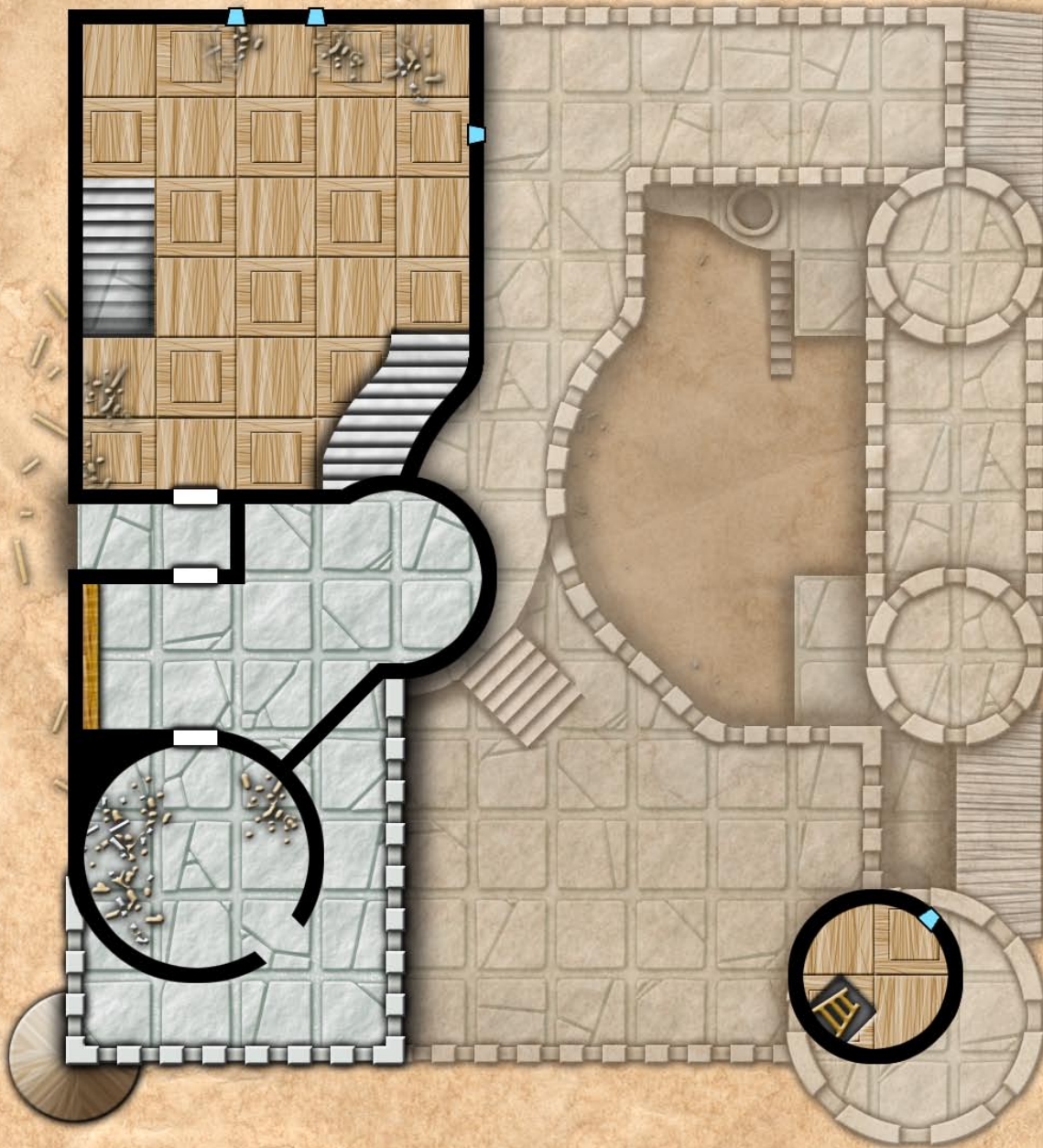


1 square = 5 feet



Pythoness House

Level 5

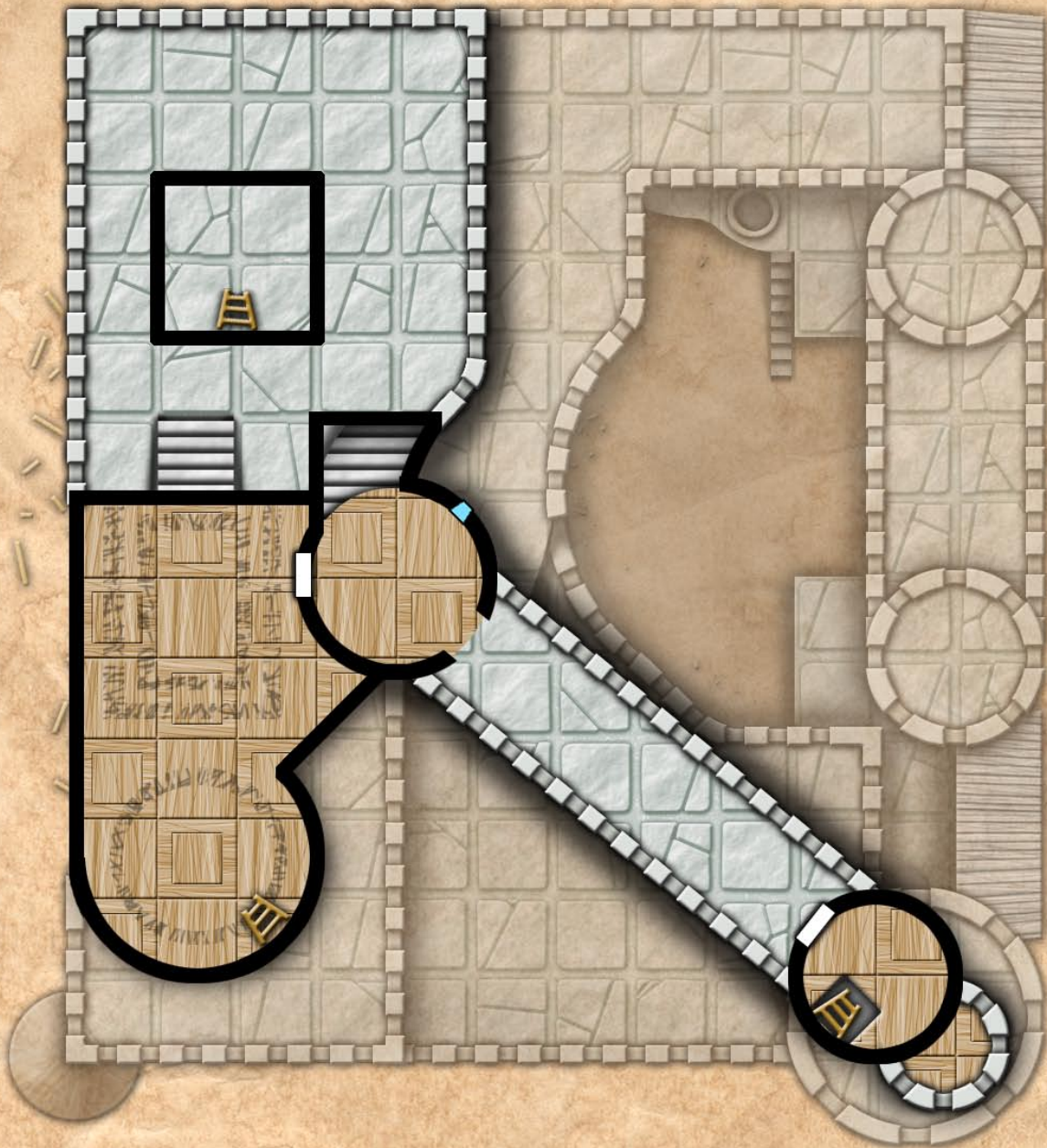


1 square = 5 feet



Pythoness House

Level 6

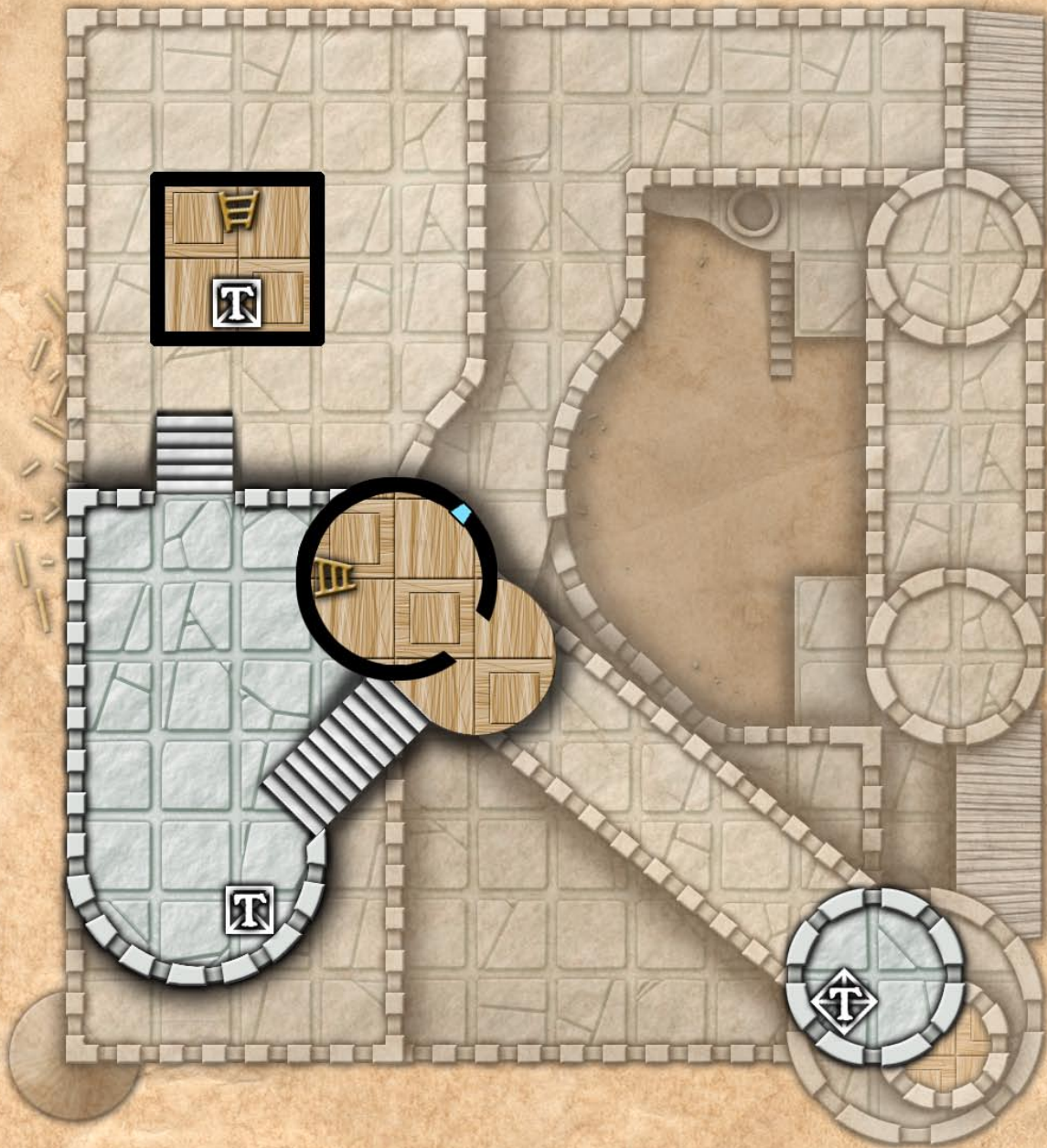


1 square = 5 feet



Pythoness House

Level 7

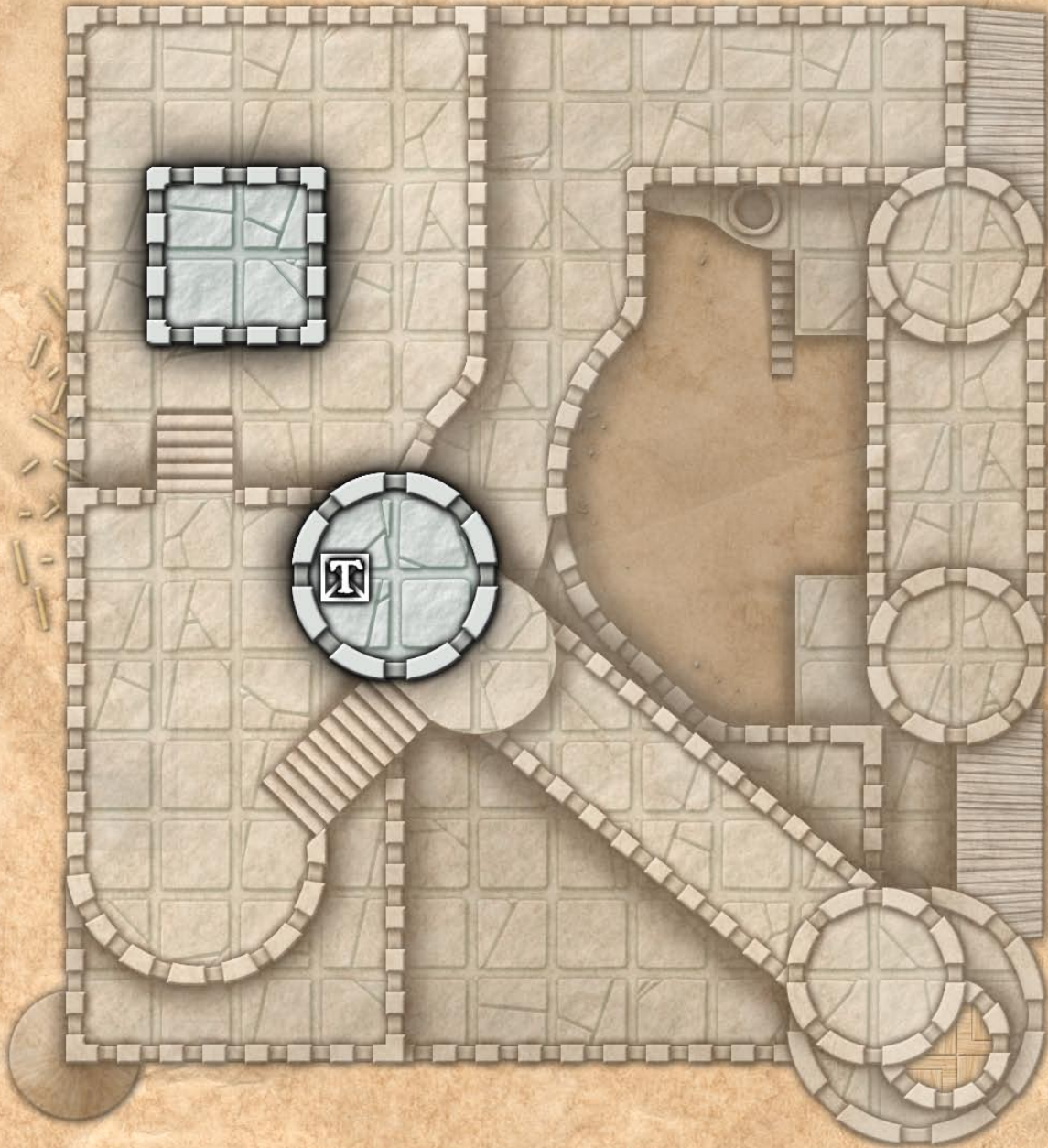


1 square = 5 feet



Pythoness House

Level 8



1 square = 5 feet

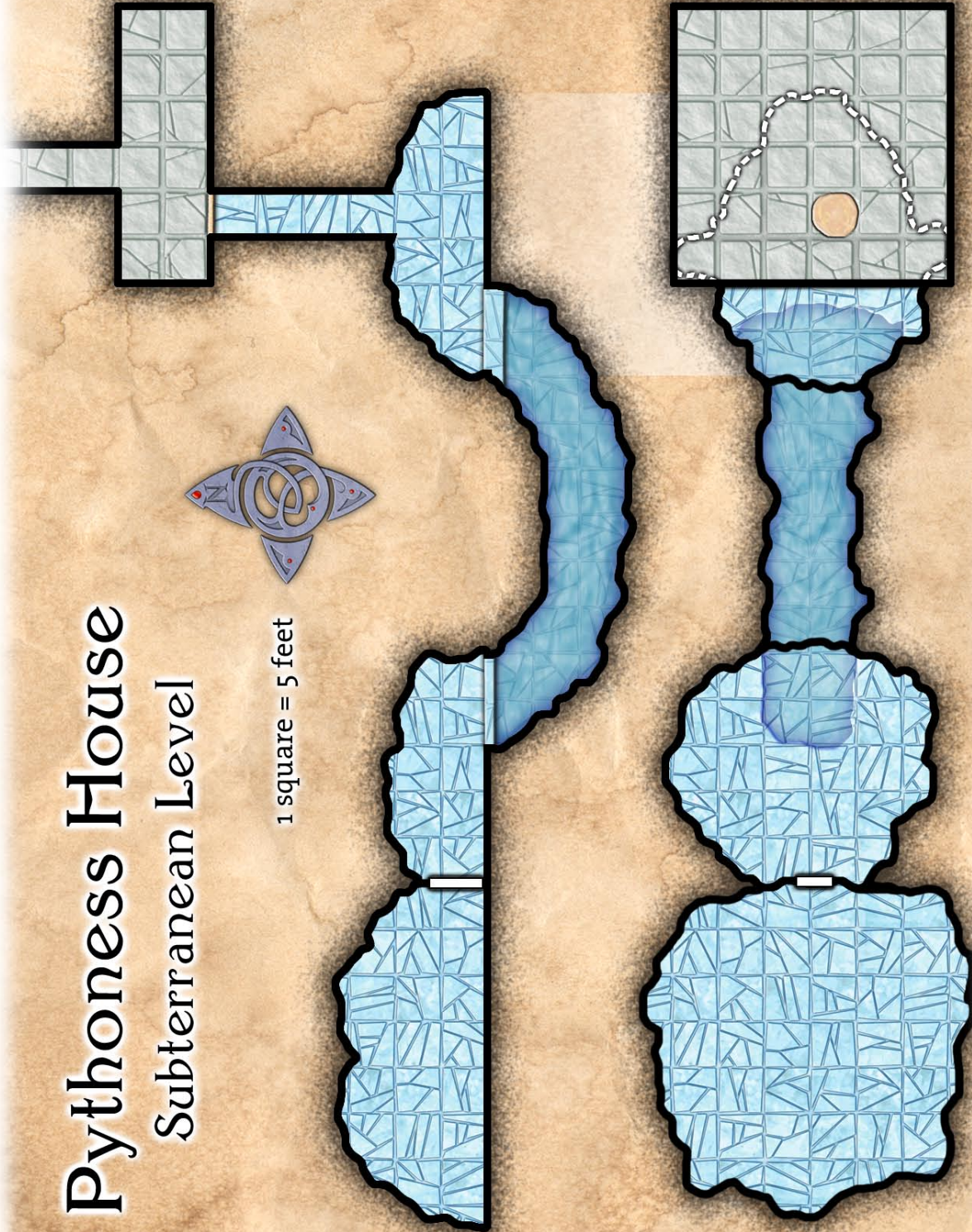


Pythonesse House

Subterranean Level



1 square = 5 feet



The Secret Meeting



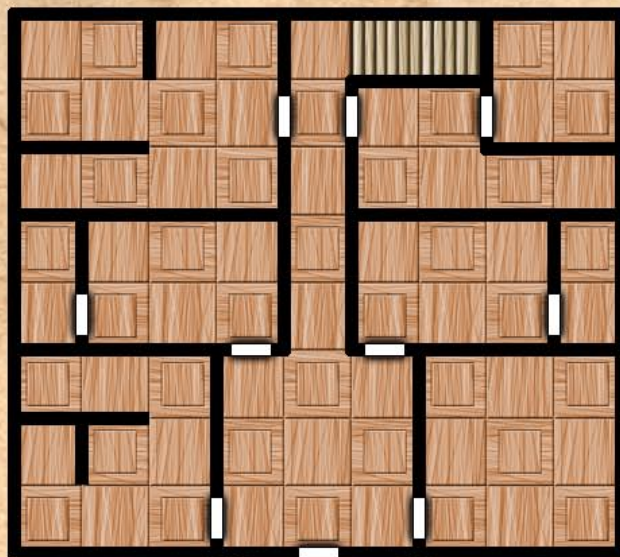
1 square = 5 feet

Kinion Luth's Lair

1 square = 5 feet

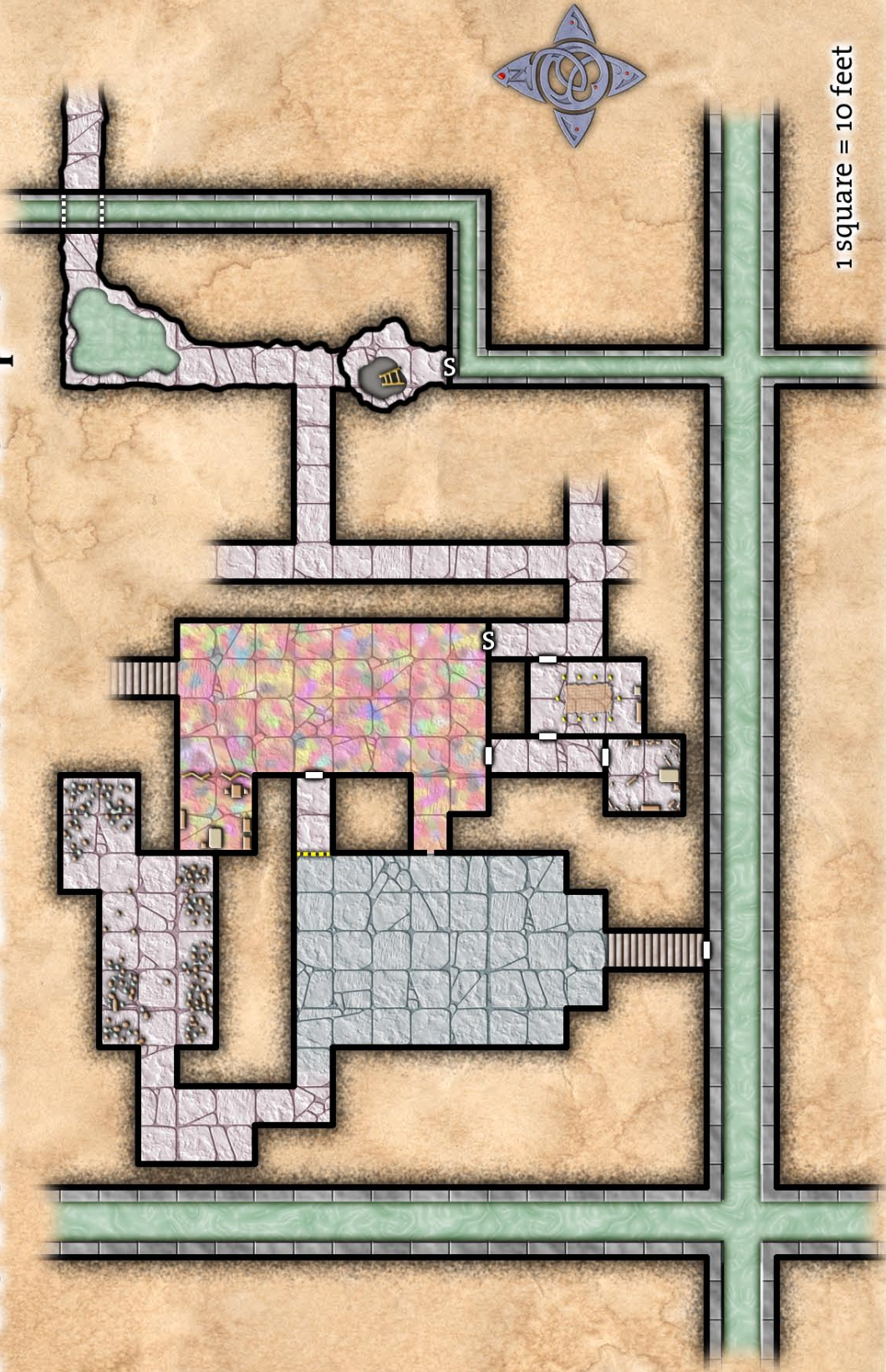


The Apartment House

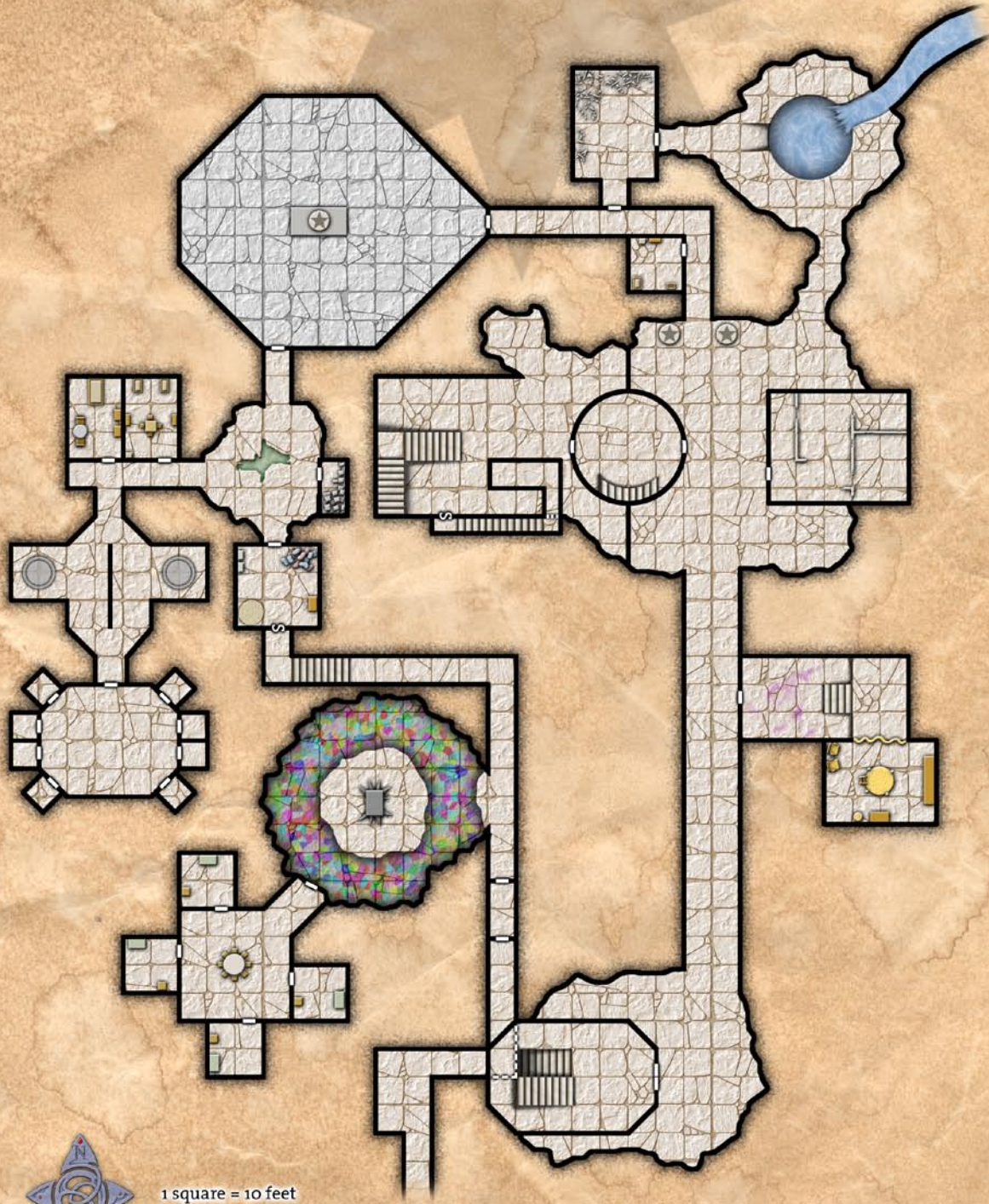


1 square = 10 feet

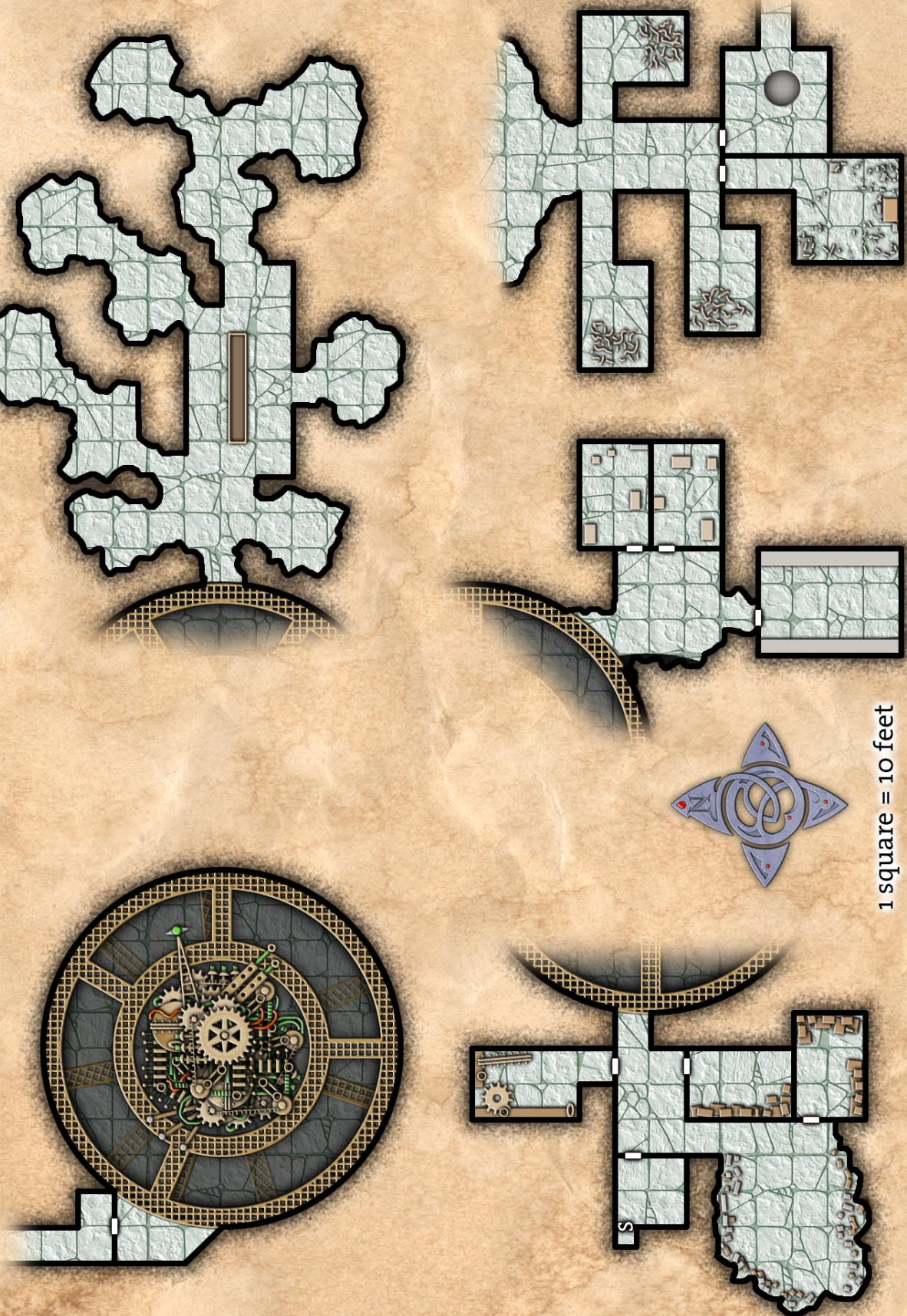
The Sewer and the Entrance to the Temple



The Temple of Deep Chaos

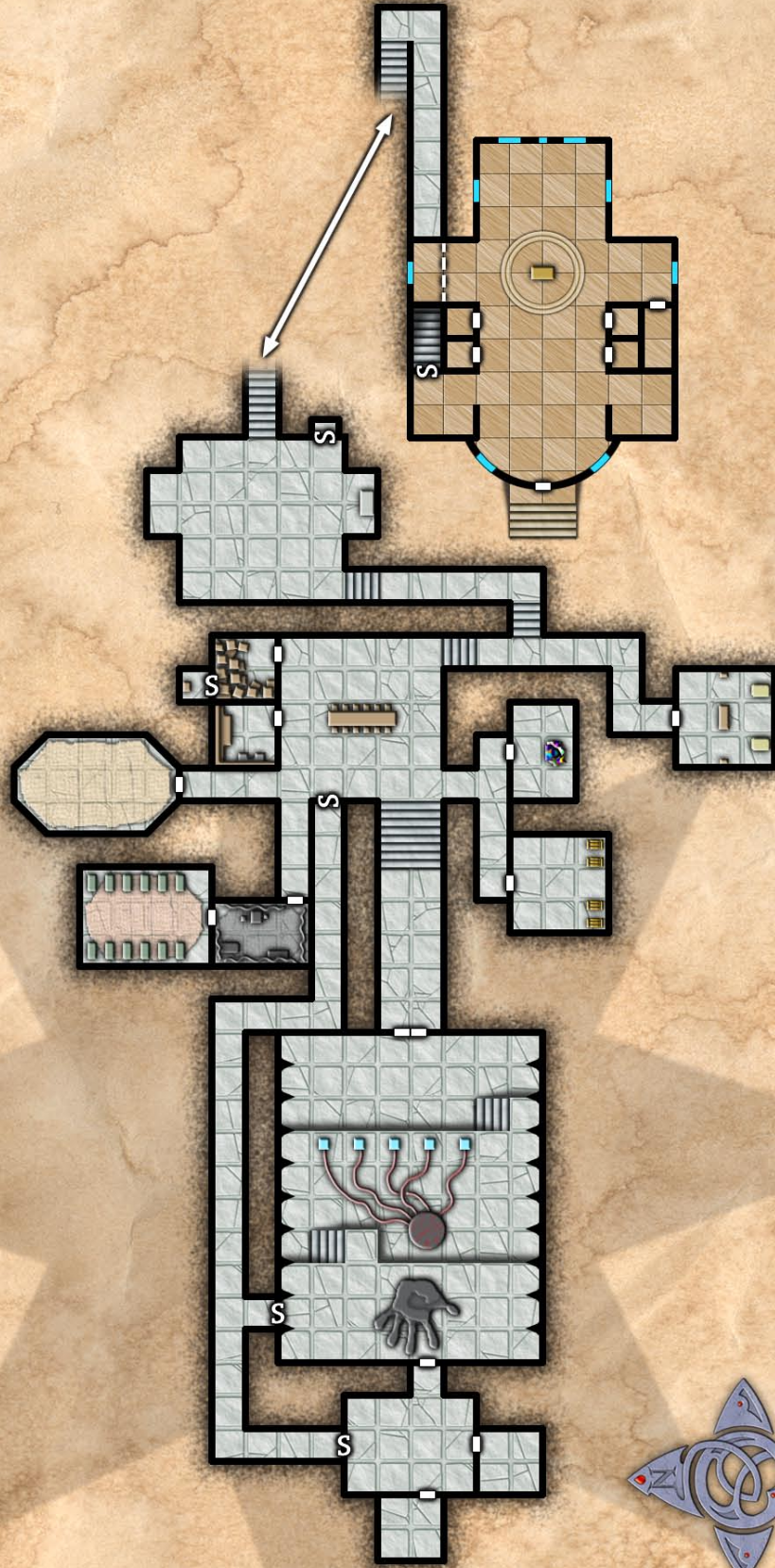


The Mrathrach Machine



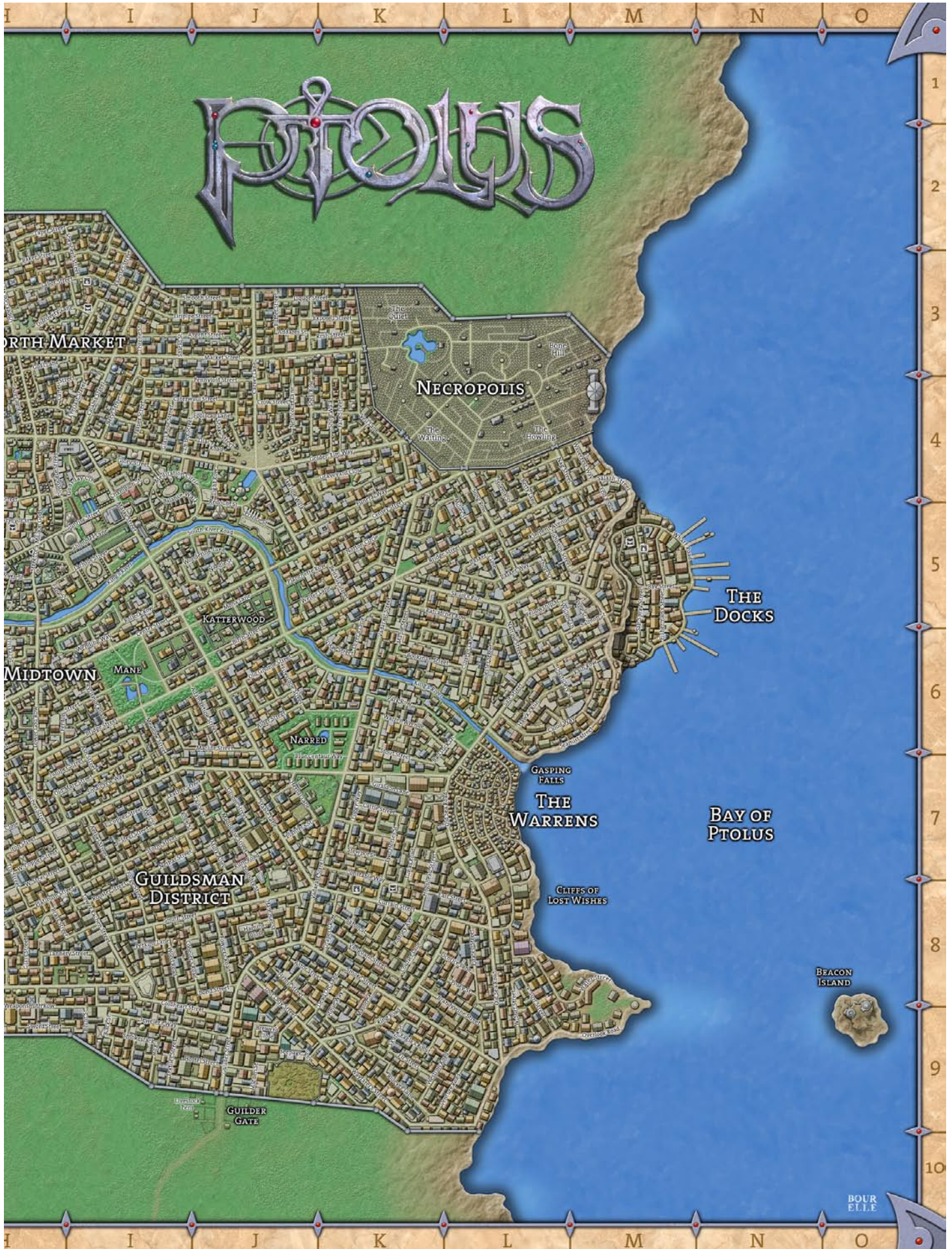
1 square = 10 feet

The Final Ritual

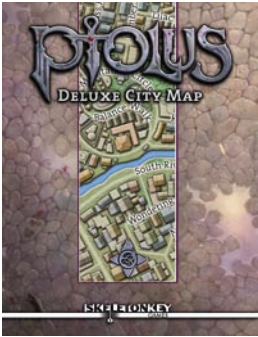


1 square = 5 feet





Try these great **PTOLUS** products!



Inside the Ptolus Deluxe City Map you will find sixty six map tiles detailing the entire city of Ptolus. When printed and assembled, these map tiles will create a detailed wall map of Monte Cook's City by the Spire. With only the streets and districts labeled on this map it is both GM and player friendly. It has no numbered locations to attract player curiosity.

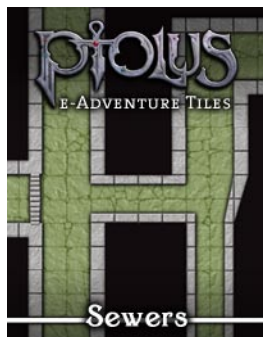
During your Ptolus campaign, smaller sections of the map can be printed out for making notes or as player handouts. If you need a map of Oldtown, just find the rows and columns for the tiles you need using the included map guide and print only the tiles you will be using.

In addition to the sixty six tiles, four large map sections have been provided for those with access to large format printing. When fully assembled, the Ptolus Deluxe City Map measures over 80 inches wide.

Welcome to Ptolus Adventure Maps: The Ghostly Minstrel. Inside you will find 24 terrain tiles detailing the three floors of this Midtown landmark and focal point of the delvers who plumb the depths below the city.

An inn, a pub, and a restaurant all in one, the Ghostly Minstrel is the adventurer's meeting place of choice. It has earned a reputation as the central feature of Delver's Square and is sure to become a recurring fixture in any Ptolus campaign.

Ptolus Adventure Maps feature detailed miniatures scale map tiles of locales pulled straight from the pages of Monte Cook's Ptolus! Simply print them, trim them out, and bring the excitement of the City by the Spire to your tabletop.



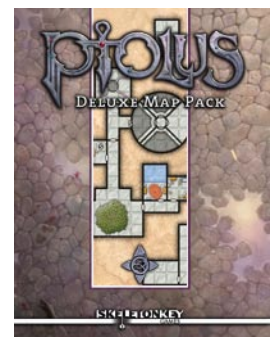
Design your own miniatures scale sewers beneath the city of Ptolus!

Ptolus e-Adventure Tiles: Sewers lets you customize miniatures scale encounter areas in the waterways beneath the streets of Ptolus. This set of 25 six inch square tiles provides both main and medium sewer lines as described in Chapter 21 of Ptolus: City by the Spire – complete with walkways, murky water, intersections, and arched stone bridges. In addition, there are ten bonus tiles to link this set with any other e-Adventure Tiles Cave or Sewer set to create ratman tunnels or connections to the deeper sewers below Oldtown.

Use the thumbnail tiles in the introduction file to design your sewer encounters, print only the tiles you need, trim them out, and they are ready for the tabletop. The only thing missing will be the smell.

Inside the Ptolus Deluxe Map Pack you will find over eighty maps originally appearing in Ptolus: Monte Cook's City by the Spire. Each map is presented as a full page image for easy reference and includes the original labeled version and a version with most of the labels removed. Only title, scale, and compass have been left on the unlabeled maps. Each map references the chapter and page number in Ptolus: Monte Cook's City by the Spire so you can find the information you need quickly during game play. Perfect as a GM utility or as player handouts, these maps will be a welcome addition to any Ptolus campaign.

Look for the Ptolus Bonus Map Pack coming the first week of September. This free PDF features labeled and unlabeled versions of all the maps for the adventures found in chapter 33 of Ptolus along with those found in Night of Dissolution.



www.ptolus.com
www.skeletonkeygames.com